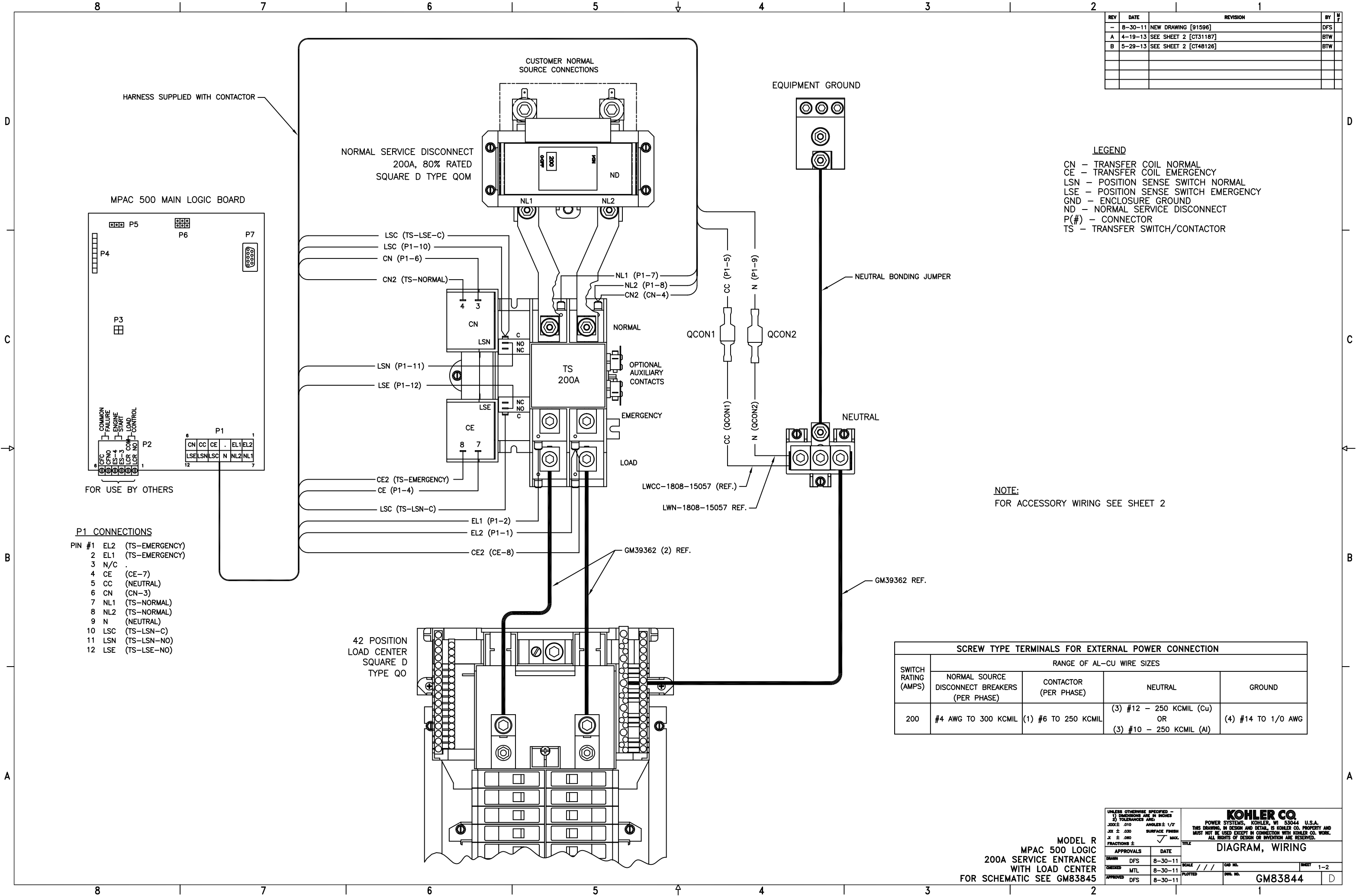


REV	DATE	REVISION	BY	DATE
-	8-30-11	NEW DRAWING [91596]	DFS	
A	4-19-13	SEE SHEET 2 [CT31187]	BTW	
B	5-29-13	SEE SHEET 2 [CT48126]	BTW	



LEGEND
 CN - TRANSFER COIL NORMAL
 CE - TRANSFER COIL EMERGENCY
 LSN - POSITION SENSE SWITCH NORMAL
 LSE - POSITION SENSE SWITCH EMERGENCY
 GND - ENCLOSURE GROUND
 ND - NORMAL SERVICE DISCONNECT
 P(#)- CONNECTOR
 TS - TRANSFER SWITCH/CONTACTOR

NOTE:
 FOR ACCESSORY WIRING SEE SHEET 2

- P1 CONNECTIONS**
- PIN #1 EL2 (TS-EMERGENCY)
 - 2 EL1 (TS-EMERGENCY)
 - 3 N/C
 - 4 CE (CE-7)
 - 5 CC (NEUTRAL)
 - 6 CN (CN-3)
 - 7 NL1 (TS-NORMAL)
 - 8 NL2 (TS-NORMAL)
 - 9 N (NEUTRAL)
 - 10 LSC (TS-LSN-C)
 - 11 LSN (TS-LSN-NO)
 - 12 LSE (TS-LSE-NO)

SWITCH RATING (AMPS)	RANGE OF AL-CU WIRE SIZES			
	NORMAL SOURCE DISCONNECT BREAKERS (PER PHASE)	CONTACTOR (PER PHASE)	NEUTRAL	GROUND
200	#4 AWG TO 300 KCMIL	(1) #6 TO 250 KCMIL	(3) #12 - 250 KCMIL (Cu) OR (3) #10 - 250 KCMIL (Al)	(4) #14 TO 1/0 AWG

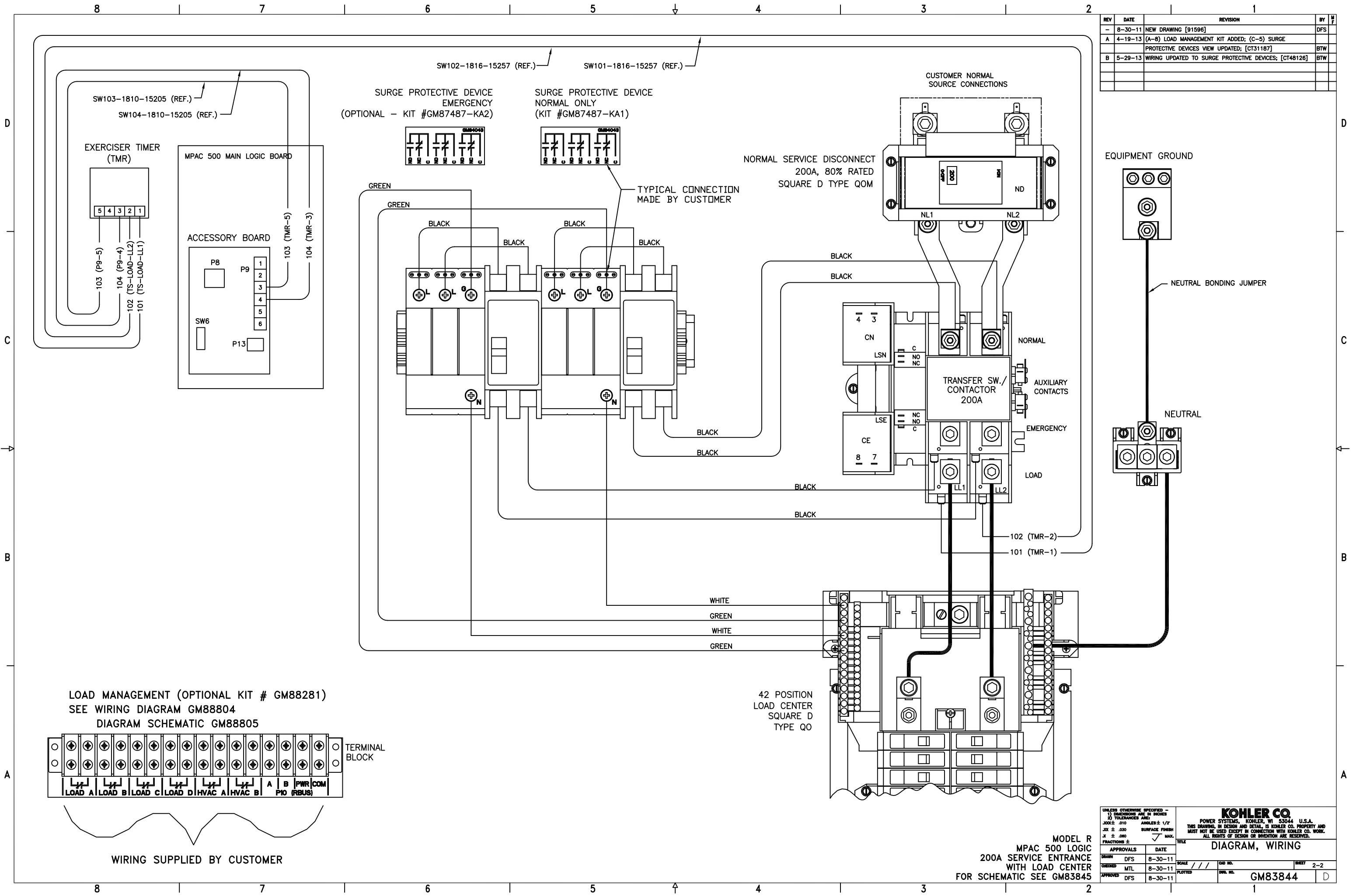
MODEL R
 MPAC 500 LOGIC
 200A SERVICE ENTRANCE
 WITH LOAD CENTER
 FOR SCHEMATIC SEE GM83845

KOHLER CO.
 POWER SYSTEMS, KOHLER, WI 53044 U.S.A.
 THIS DRAWING, IN DESIGN AND DETAIL, IS KOHLER CO. PROPERTY AND MUST NOT BE USED EXCEPT IN CONNECTION WITH KOHLER CO. WORK. ALL RIGHTS OF DESIGN OR INVENTION ARE RESERVED.

DIAGRAM, WIRING

APPROVALS	DATE	SCALE	SHEET
DFS	8-30-11	///	1-2
CHECKED	DATE	PLOTTED	DWG. NO.
MTL	8-30-11		GM83844
APPROVED	DATE		
DFS	8-30-11		

REV	DATE	REVISION	BY
-	8-30-11	NEW DRAWING [91596]	DFS
A	4-19-13	(A-B) LOAD MANAGEMENT KIT ADDED; (C-5) SURGE	
		PROTECTIVE DEVICES VIEW UPDATED; [CT31187]	BTW
B	5-29-13	WIRING UPDATED TO SURGE PROTECTIVE DEVICES; [CT48126]	BTW



UNLESS OTHERWISE SPECIFIED -		TITLE	
1) DIMENSIONS ARE IN INCHES	2) TOLERANCES ARE	DIAGRAM, WIRING	
.001 ± .010	ANGLES ± 1/2°	SCALE	SHEET 2-2
.002 ± .030	SURFACE FINISH	DATE	
.X ± .080	MAX.	APPROVED	
FRACTIONS ±		DATE	
APPROVALS	DATE	SCALE	
DESIGNED	DATE	SCALE	
APPROVED	DATE	SCALE	

MODEL R
MPAC 500 LOGIC
200A SERVICE ENTRANCE
WITH LOAD CENTER
FOR SCHEMATIC SEE GM83845

KOHLER CO.
POWER SYSTEMS, KOHLER, WI 53044 U.S.A.
THIS DRAWING, IN WHOLE AND DETAIL, IS KOHLER CO. PROPERTY AND
MUST NOT BE USED EXCEPT IN CONNECTION WITH KOHLER CO. WORK.
ALL RIGHTS OF DESIGN OR INVENTION ARE RESERVED.

GM83844