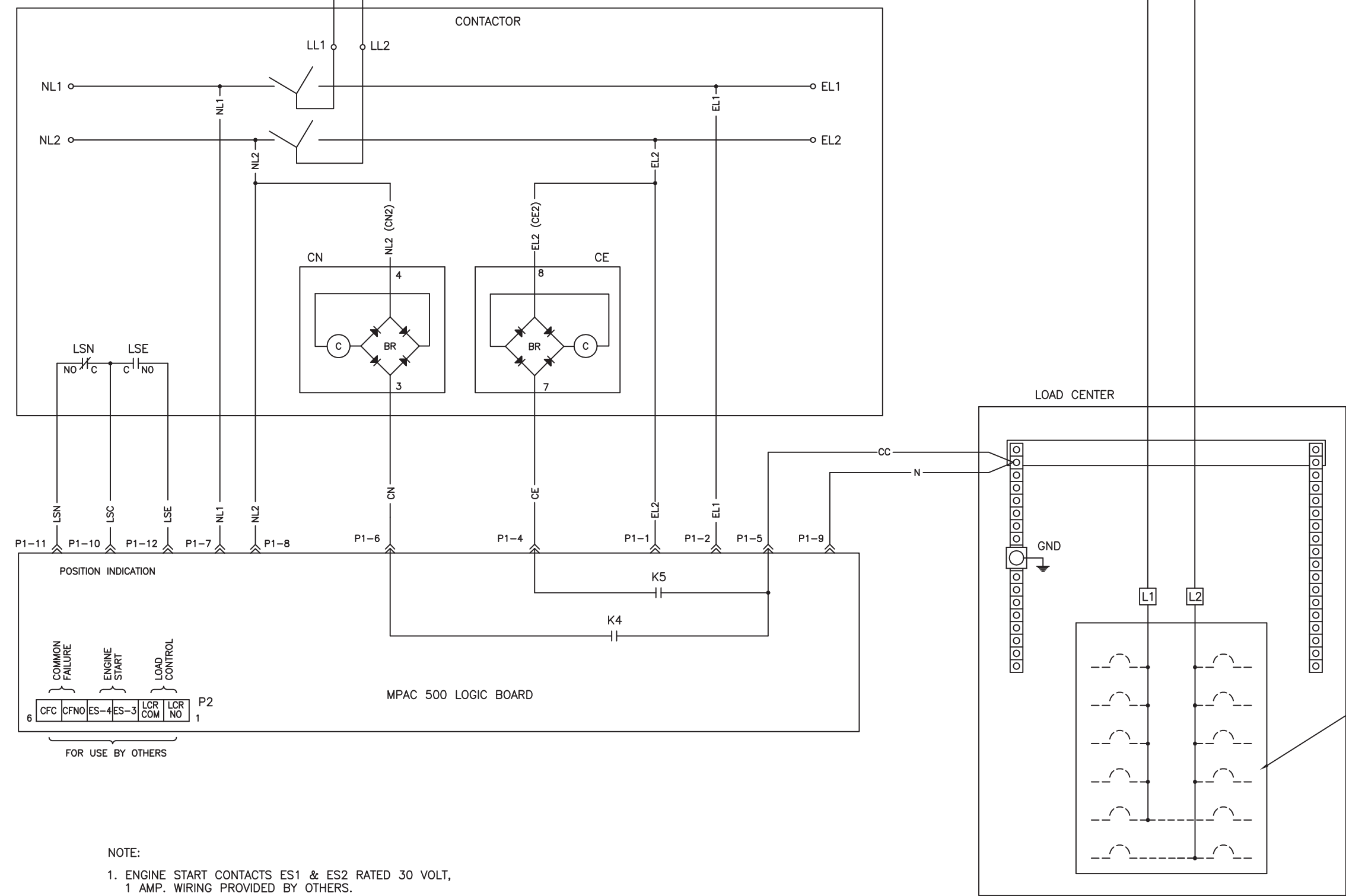


REV	DATE	REVISION	BY
B	10-7-04	(B,C-4) "N" LEAD MOVED FROM GROUND LUG TO GROUND BUS BAR; "CC" LEAD RELOCATED ON GROUND BUS BAR [73528]	DFS
C	10-28-04	(A-1,-2), GENERIC TITLE BLOCK ADDED [73612]	DFS
D	4-1-05	(B-7,-8) P2: PIN 1 & 6 DESIGNATORS ADDED, "COMMON FAILURE" TERMINAL FUNCTION MOVED FROM PINS 1 & 2 TO PINS 5 & 6, "LOAD CONTROL" TERMINAL FUNCTION MOVED FROM PINS 5 & 6 TO PINS 1 & 2, TERMINAL DESCRIPTIONS REVISED [74777]	DFS

LEGEND

- BR BRIDGE RECTIFIER
- C COIL
- CE TRANSFER COIL (EMERGENCY TRANSFER)
- CN TRANSFER COIL (NORMAL TRANSFER)
- K4 NORMAL RELAY CONTACTS
- K5 EMERGENCY RELAY CONTACTS
- LSE LIMITS SWITCH EMERGENCY CONTACTS
- LSN LIMIT SWITCH NORMAL CONTACTS
- P1 CONNECTOR



- NOTE:**
- ENGINE START CONTACTS ES1 & ES2 RATED 30 VOLT, 1 AMP. WIRING PROVIDED BY OTHERS.
 - CONTACTOR SHOWN IN NORMAL WITH NO POWER APPLIED.
 - FOR WIRING DIAGRAM SEE GM37650

UNLESS OTHERWISE SPECIFIED - 1) DIMENSIONS ARE IN INCHES 2) TOLERANCES ARE: DIMENSIONS: .010 ANGLE: 1/2° HOLE: .030 SURFACE FINISH: MAX. X ± .080		<p>KOHLER CO. POWER SYSTEMS, KOHLER, WI 53044 U.S.A. THIS DRAWING, IN DESIGN AND DETAIL, IS KOHLER CO. PROPERTY AND MUST NOT BE USED EXCEPT IN CONNECTION WITH KOHLER CO. WORK. ALL RIGHTS OF DESIGN OR INVENTION ARE RESERVED.</p> <p>DIAGRAM, SCHEMATIC</p>	
APPROVALS	DATE	SCALE	TITLE
DRAWN DFS	7-14-04	///	GM37649.DWG
CHECKED JS	7-15-04		SHEET 1-1
APPROVED JS	7-15-04		DWG. NO. GM37649

MPAC 500
100-200A W/LOAD CENTER