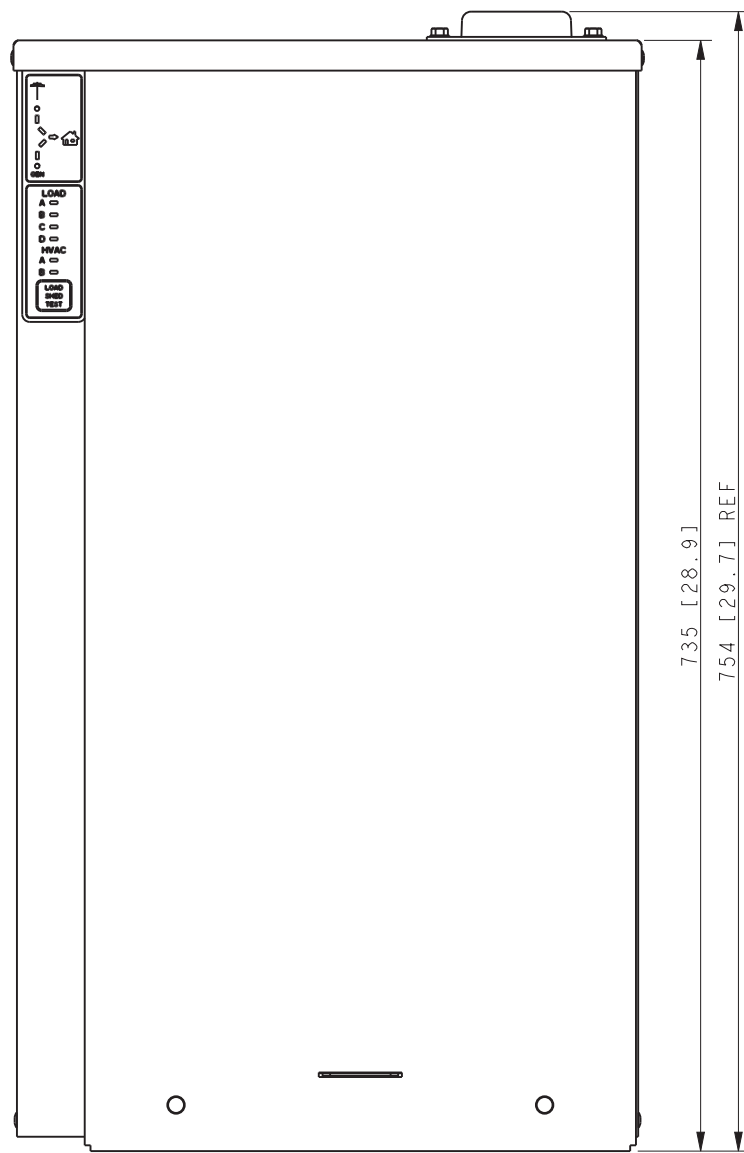
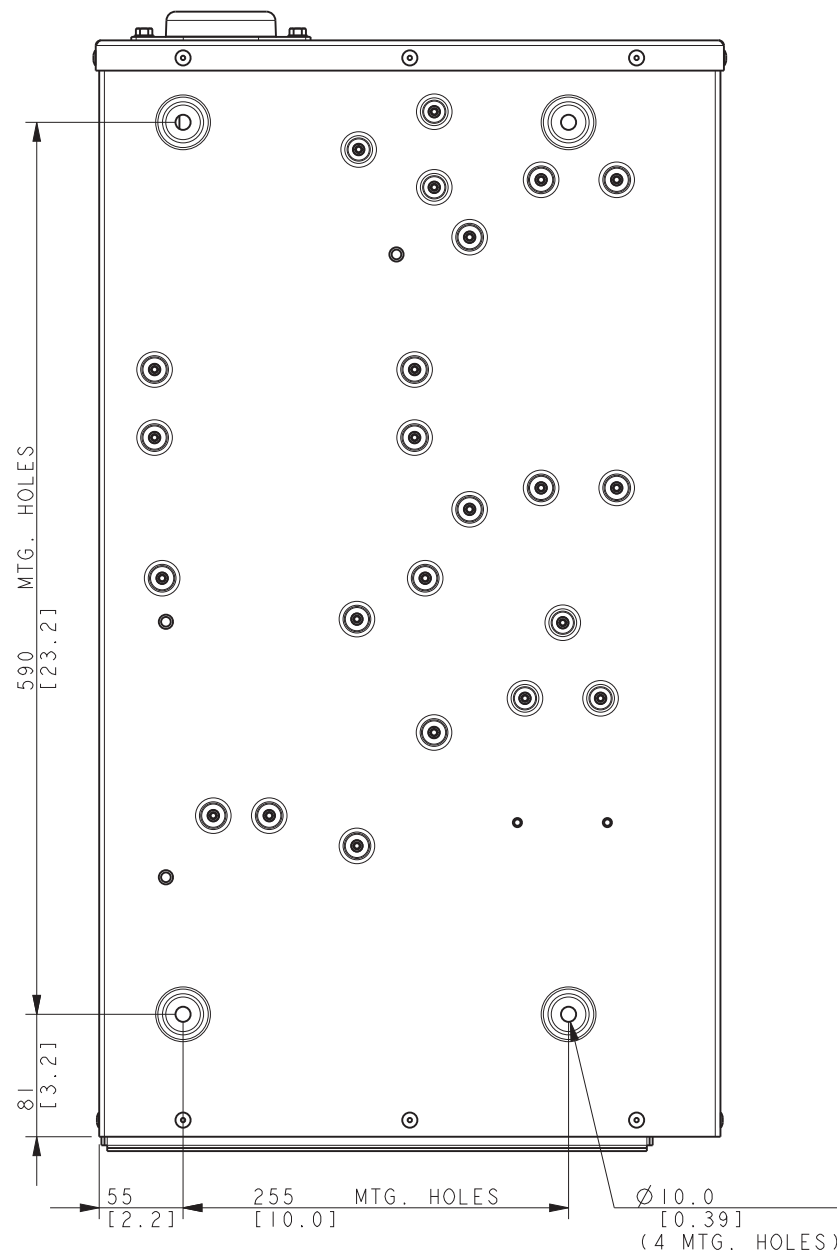


TOP VIEW



FRONT VIEW



BACK VIEW

CSA 150-200A  
MODEL RXT  
SERVICE ENTRANCE  
NEMA 3R ENCLOSURE



COVER NOT SHOWN

DIMENSION IN [ ] ARE INCHES.

FINISH: ANSI 49 GRAY

REFER TO OPERATOR'S MANUAL PRIOR TO  
INSTALLATION AND OPERATION OF UNIT.

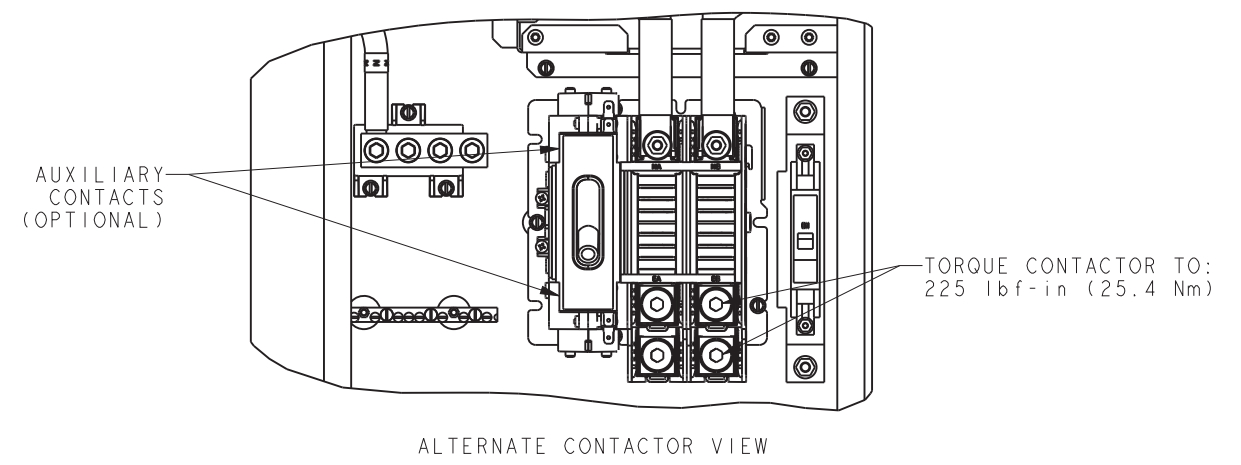
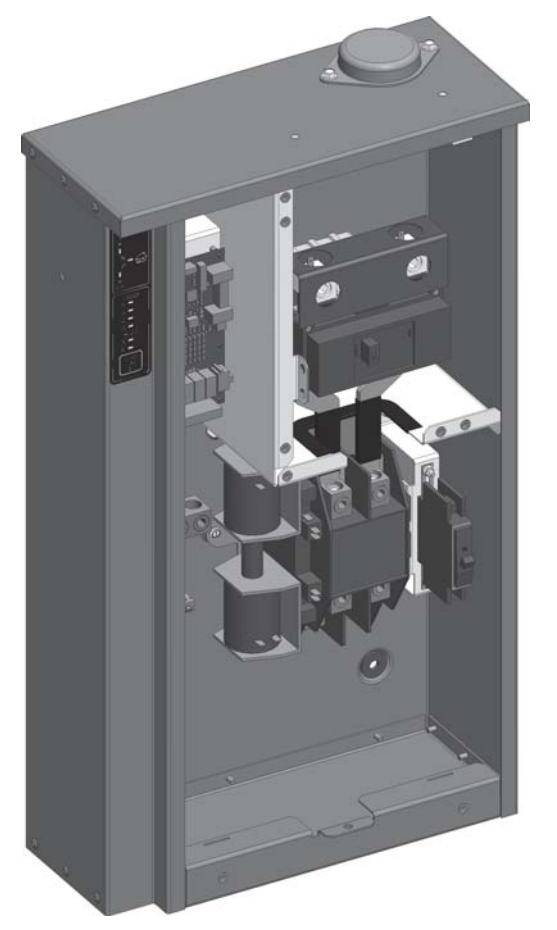
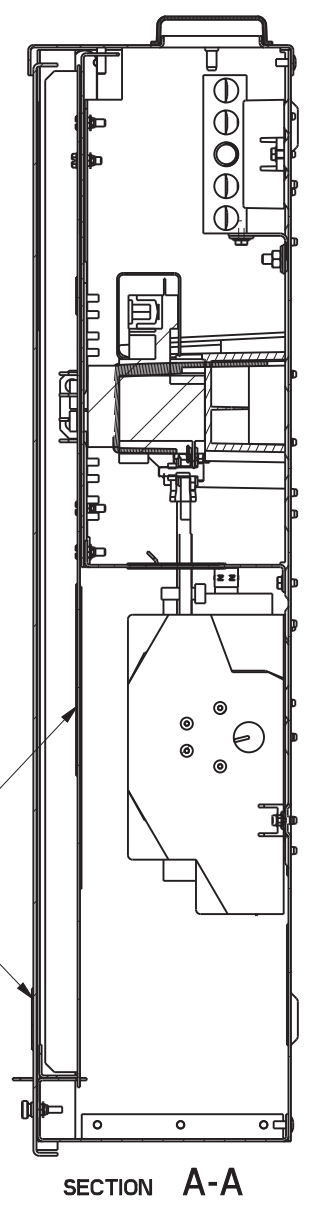
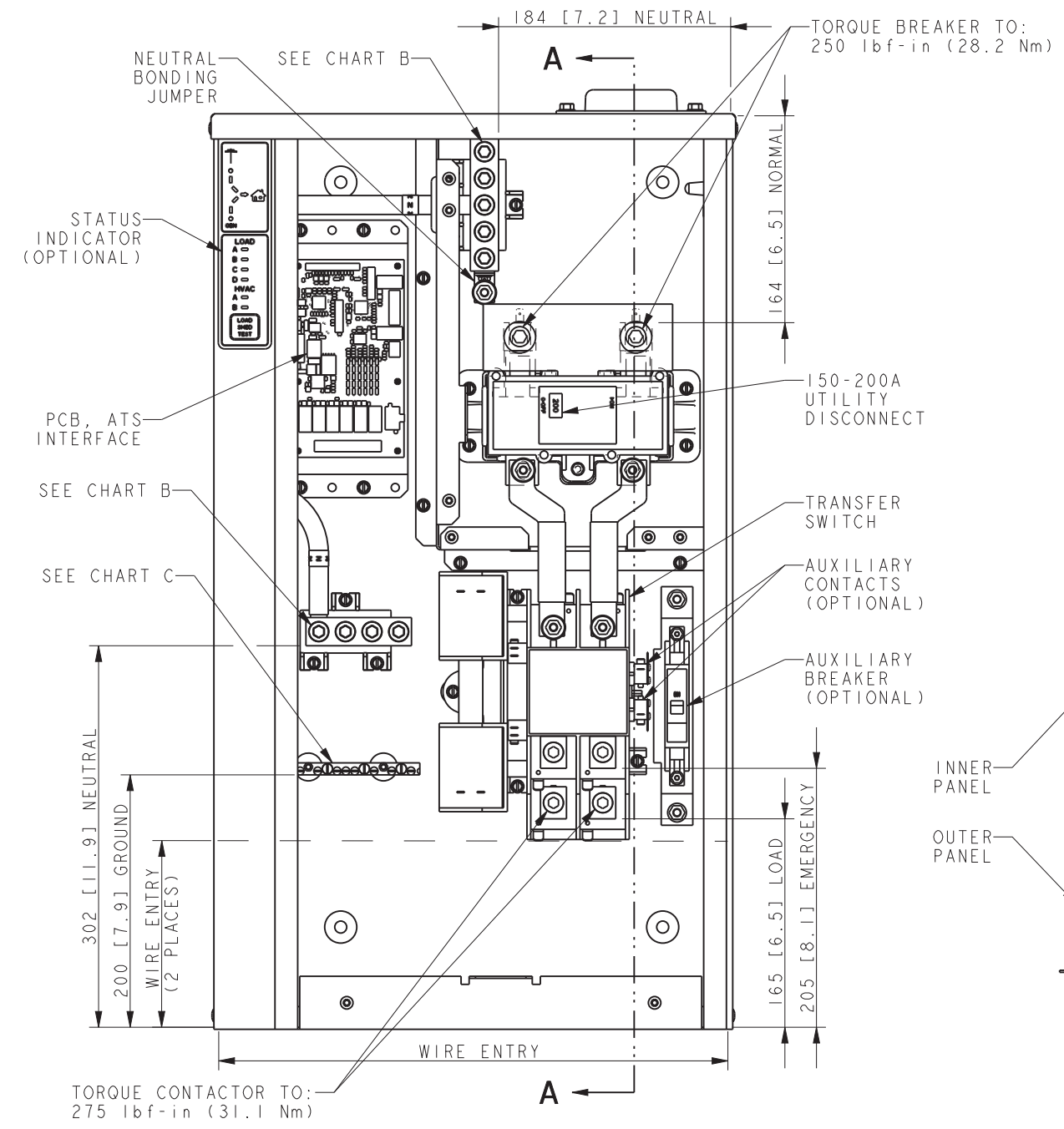
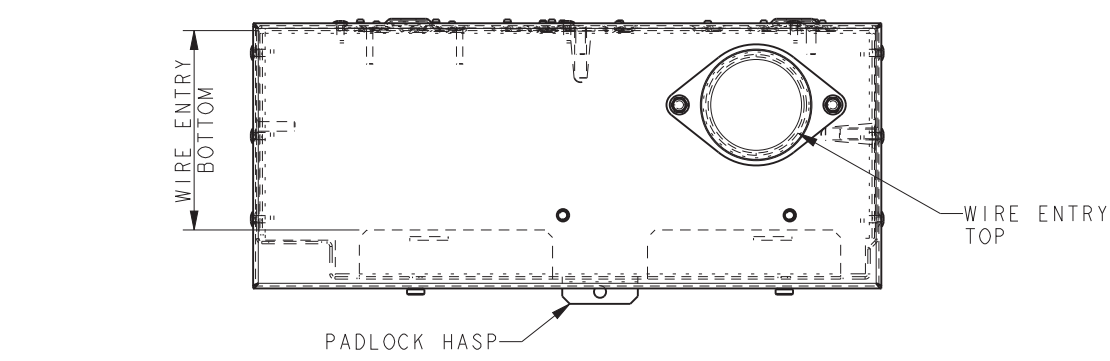
100 AMP APPROXIMATE WEIGHT 16 Kg (34 LBS.)

REV	DATE	ON COMPOSITE DWGS. SEE PART NO. FOR REVISION LEVEL	BY	UNLESS OTHERWISE SPECIFIED - 1) DIMENSIONS ARE IN MILLIMETERS 2) TOLERANCES ARE:
-	5-20-15	NEW DRAWING [CT111337]	BTW	X.XX ± 0.25
A	3-18-16	SEE SHEET 2 [CT142157]	BTW	X.X ± 1.0
B	1-26-28	SEE SHEET 2 [CT183679]	BTW	X ± 1.5
C	4-10-18	SEE SHEET 2 [CT186526]	RMJ	ANGLES ± 0° 30' MAX.
				THIRD ANGLE PROJECTION
APPROVALS		DATE		
DRAWN BTW		5-20-15		
CHECKED BTW		5-20-15		
APPROVED MTL		5-20-15		

TITLE		SCALE	CAD NO.	SHEET	of
DIMENSION PRINT		0.40		1	2
DWG NO. ADV-8798				D	

**KOHLER CO. METRIC PRO-E**  
POWER SYSTEMS, KOHLER, WI 53044 U.S.A.  
THIS DRAWING IN DESIGN AND DETAIL IS KOHLER CO.  
PROPERTY AND MUST NOT BE USED EXCEPT IN  
CONNECTION WITH KOHLER CO. WORK. ALL RIGHTS OF  
DESIGN OR INVENTION ARE RESERVED.

C: GROUND TORQUE		
	LARGE HOLE	SMALL HOLE
#14-10 AWG	35 lbf-in (4 Nm)	#14-10 AWG 15 lbf-in (1.7 Nm)
#8 AWG	40 lbf-in (4.5 Nm)	
#6-4 AWG	45 lbf-in (5.1 Nm)	
#2-1/0	50 lbf-in (5.6 Nm)	#8-6 AWG 25 lbf-in (2.8 Nm)



A: SCREW TYPE TERMINALS FOR EXTERNAL POWER CONNECTION				
SWITCH RATING (AMPS)	RANGE OF AL-CU WIRE SIZES			
	NORMAL (PER PHASE)	EMERGENCY / LOAD (PER PHASE)	NEUTRAL	GROUND
150-200	(1) #4-300 KCMIL	(1) #6-250 KCMIL	(7) #12-250 KCMIL (Cu) OR (7) #10-250 KCMIL (Al)	(9) #14-6 AWG (4) #14-1/0 AWG

B: NEUTRAL TORQUE	
#14-10 AWG	60 lbf-in (6.8 Nm)
#8-3 AWG	120 lbf-in (13.6 Nm)
#2-2/0 AWG	240 lbf-in (27.1 Nm)
3/0-250 KCMIL	275 lbf-in (31.1 Nm)

REV	DATE	ON COMPOSITE DWGS. SEE PART NO. FOR REVISION LEVEL	BY
-	5-20-15	NEW DRAWING [CT111337]	BTW
A	3-18-16	WIRE ENTRY POINTS MARKED; [CT142157]	BTW
B	1-26-18	(A-6) NEUTRAL & GROUND CONNECTIONS UPDATED; (B-6) AUX CONTACTS & AUX BREAKER CALLED OUT; (A-2) ALTERNATE CONTACTOR VIEW ADDED; [CT183679]	BTW
C	4-10-18	(A-1,5,8, B-8, C-6,7,8, D-5) TABLES & NOTES ADDED & UPDATED, [CT186526]	BTW

UNLESS OTHERWISE SPECIFIED -  
1) DIMENSIONS ARE IN MILLIMETERS  
2) TOLERANCES ARE:

X.XX ± 0.25  
X.X ± 1.0  
X ± 1.5

SURFACE FINISH  
ANGLES ± 0° 30' MAX.

THIRD ANGLE PROJECTION

APPROVALS

DATE	DATE
5-20-15	5-20-15
5-20-15	5-20-15
5-20-15	5-20-15

**KOHLER CO. METRIC PRO-E**

POWER SYSTEMS, KOHLER, WI 53044 U.S.A.

THIS DRAWING IN DESIGN AND DETAIL IS KOHLER CO. PROPERTY AND MUST NOT BE USED EXCEPT IN CONNECTION WITH KOHLER CO. WORK. ALL RIGHTS OF DESIGN OR INVENTION ARE RESERVED.

TITLE: **DIMENSION PRINT**

SCALE 0.40 CAD NO. SHEET 2 of 2

DWG NO. **ADV-8798**