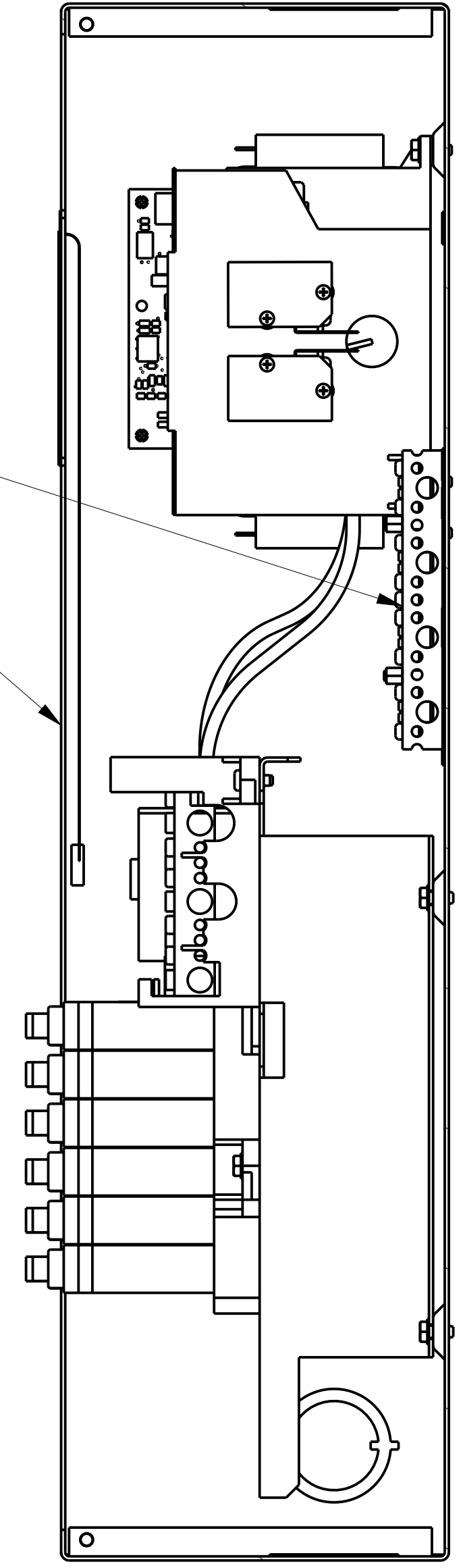
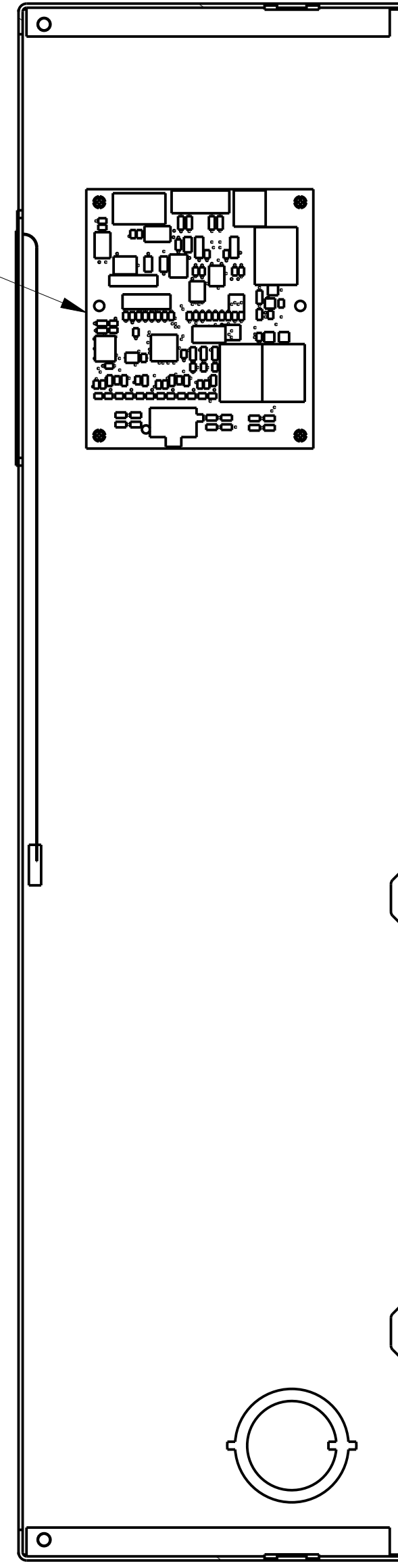
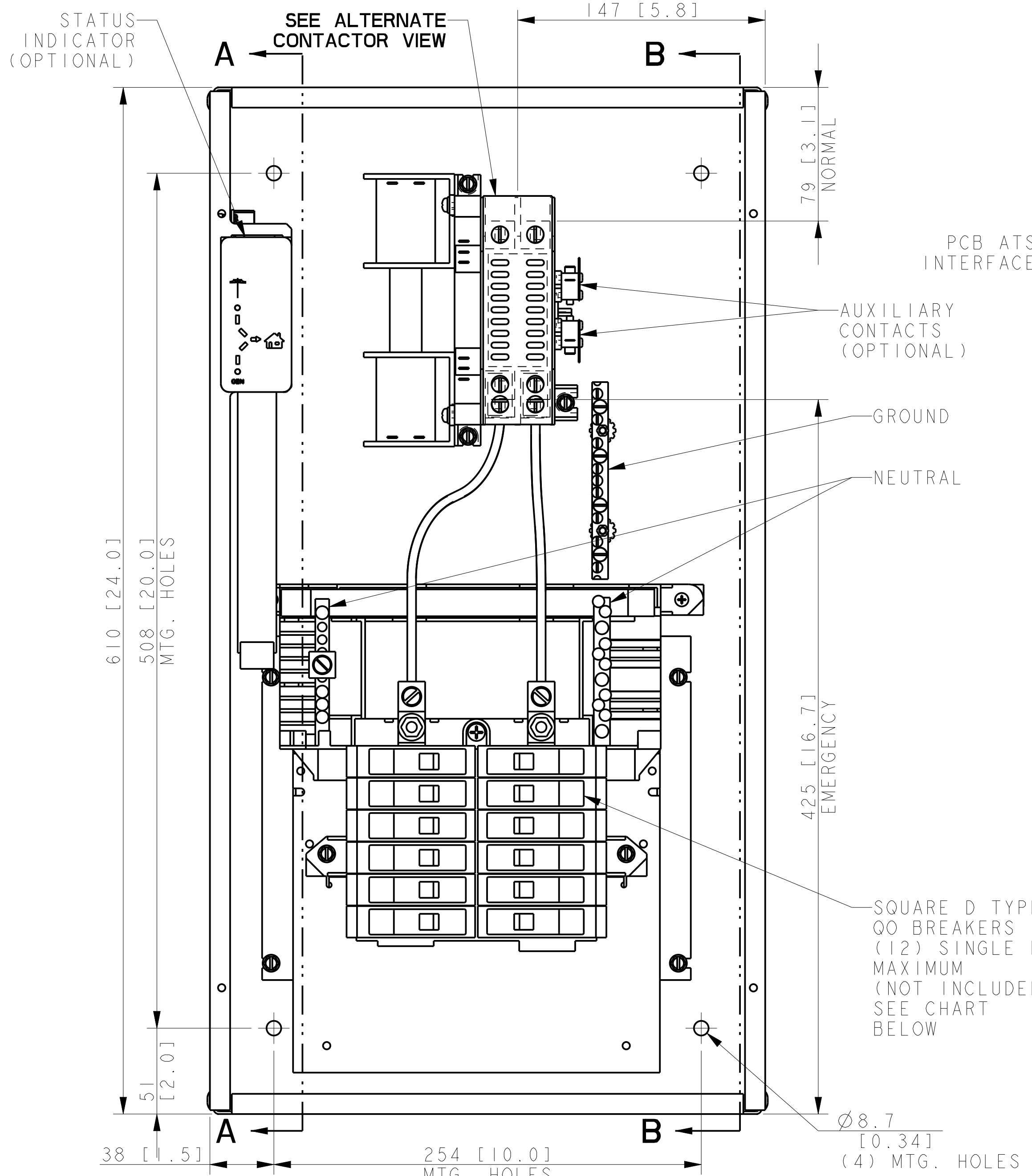


SWITCH RATING (AMPS)	SCREW TYPE TERMINALS FOR EXTERNAL POWER CONNECTION		
	RANGE OF AL-CU WIRE SIZES		
	CONTACTOR (PER PHASE)	NEUTRAL	GROUND
100	(1) #14-1/0 AWG	(13) #4-14 AWG (1) #6-2/0 AWG	(9) #14-#6 AWG (4) 1/0-#14 AWG



SECTION A-A

SECTION B-B

DIMENSIONS IN [] ARE IN INCH EQUIVALENTS.
 COVER FINISH: ANSI 49 GRAY
 REFER TO OPERATOR'S MANUAL PRIOR TO INSTALLATION AND OPERATION OF UNIT.
 APPROXIMATE WEIGHT 12 Kg (26 LBS.)

LOAD CENTER CHART INFORMATION				
SPACES	MAXIMUM NUMBER OF SINGLE POLE CIRCUITS	MAXIMUM NUMBER OF TANDEM CIRCUIT BREAKERS	MAIN TERMINAL SIZE AWG Al or Cu	NUMBER OF BRANCH NEUTRAL TERMINALS
12	12	N/A	4-2/0	12

100A
 MODEL RXT
 12 POS. LOAD CENTER
 NEMA 1 ENCLOSURE

REV	DATE	ON COMPOSITE DWGS. SEE PART NO. FOR REVISION LEVEL	BY
-	8-6-14	NEW DRAWING [CT89318]	BTW
A	1-6-17	LOGO & DECALS REMOVED; [CT169011]	BTW
B	9-29-17	(D-5) OPTIONAL CONTACTOR VIEW ADDED; (D-1) (9)#14-#6AWG WAS (9)#14-#4AWG, (4)1/0-#14 AWG ADDED; [CT179697]	BTW

UNLESS OTHERWISE SPECIFIED - 1) DIMENSIONS ARE IN MILLIMETERS 2) TOLERANCES ARE:		KOHLER CO. METRIC PRO-E POWER SYSTEMS, KOHLER, WI 53044 U.S.A. THIS DRAWING IN DESIGN AND DETAIL IS KOHLER CO. PROPERTY AND MUST NOT BE USED EXCEPT IN CONNECTION WITH KOHLER CO. WORK. ALL RIGHTS OF DESIGN OR INVENTION ARE RESERVED.
X.XX ± 0.25		
X.X ± 1.0		TITLE
X ± 1.5		DIMENSION PRINT
ANGLES ± 0° 30'		SCALE 0.50 CAD NO. SHEET 1 of 1
		DWG NO. ADV-8736