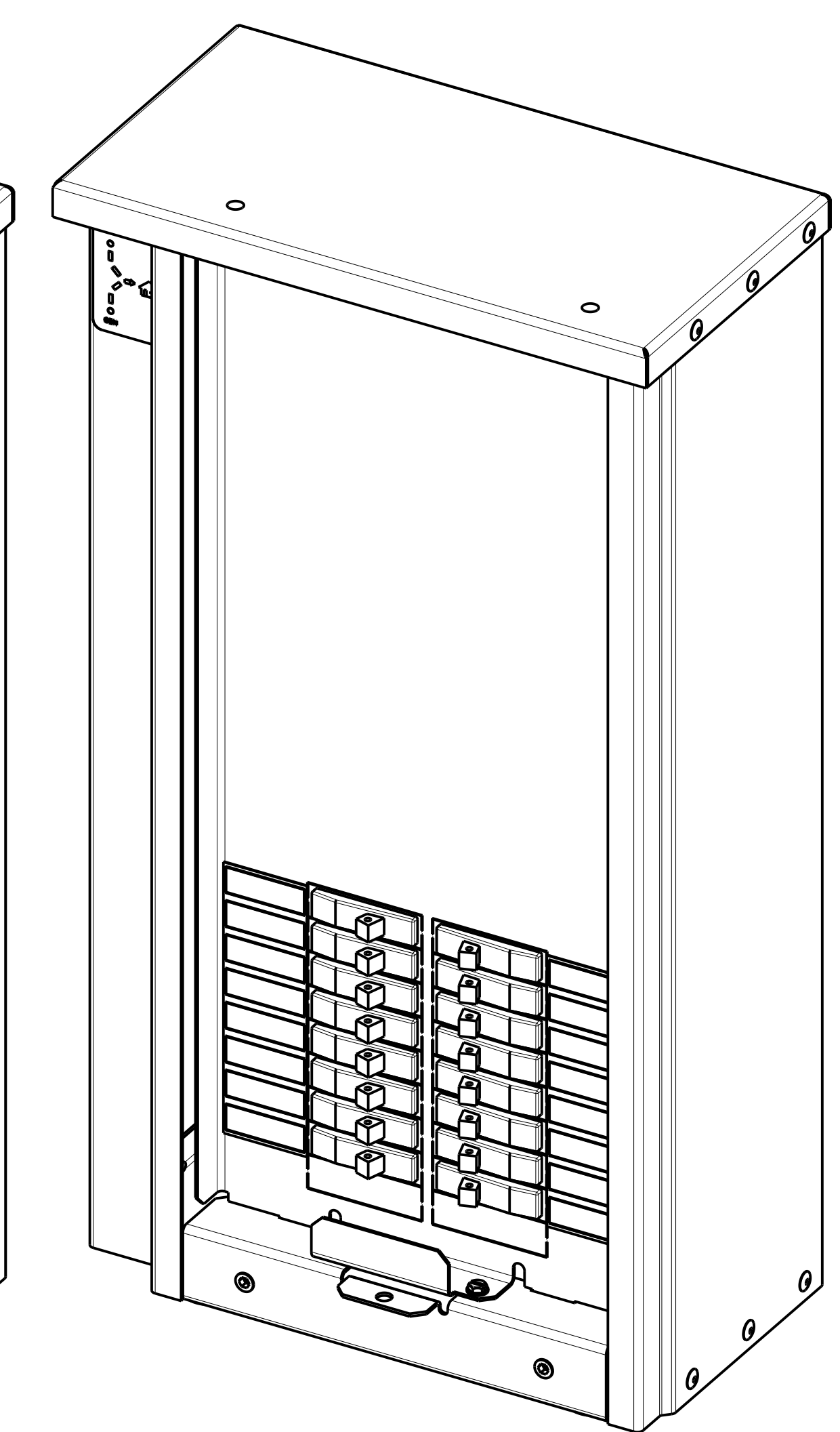
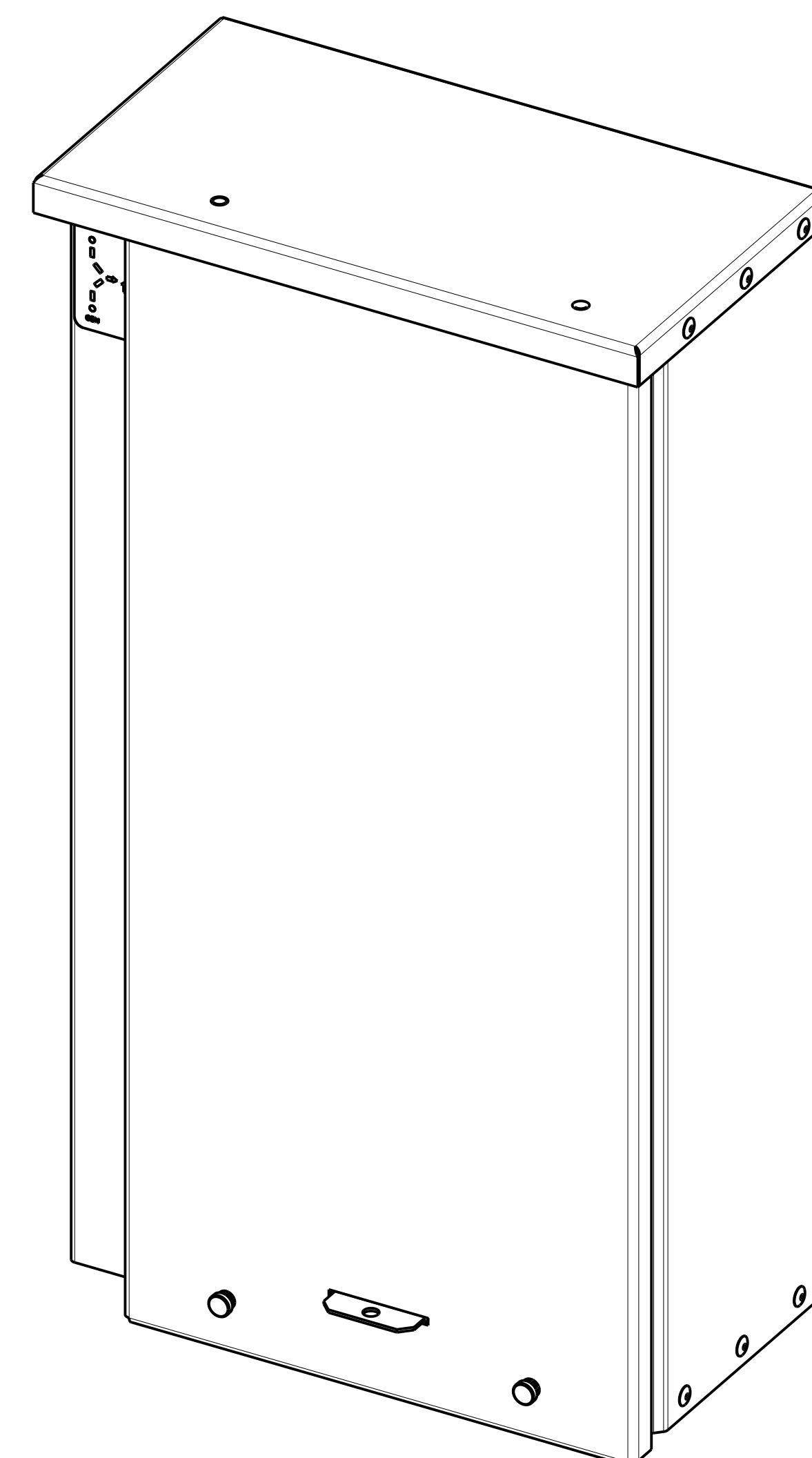
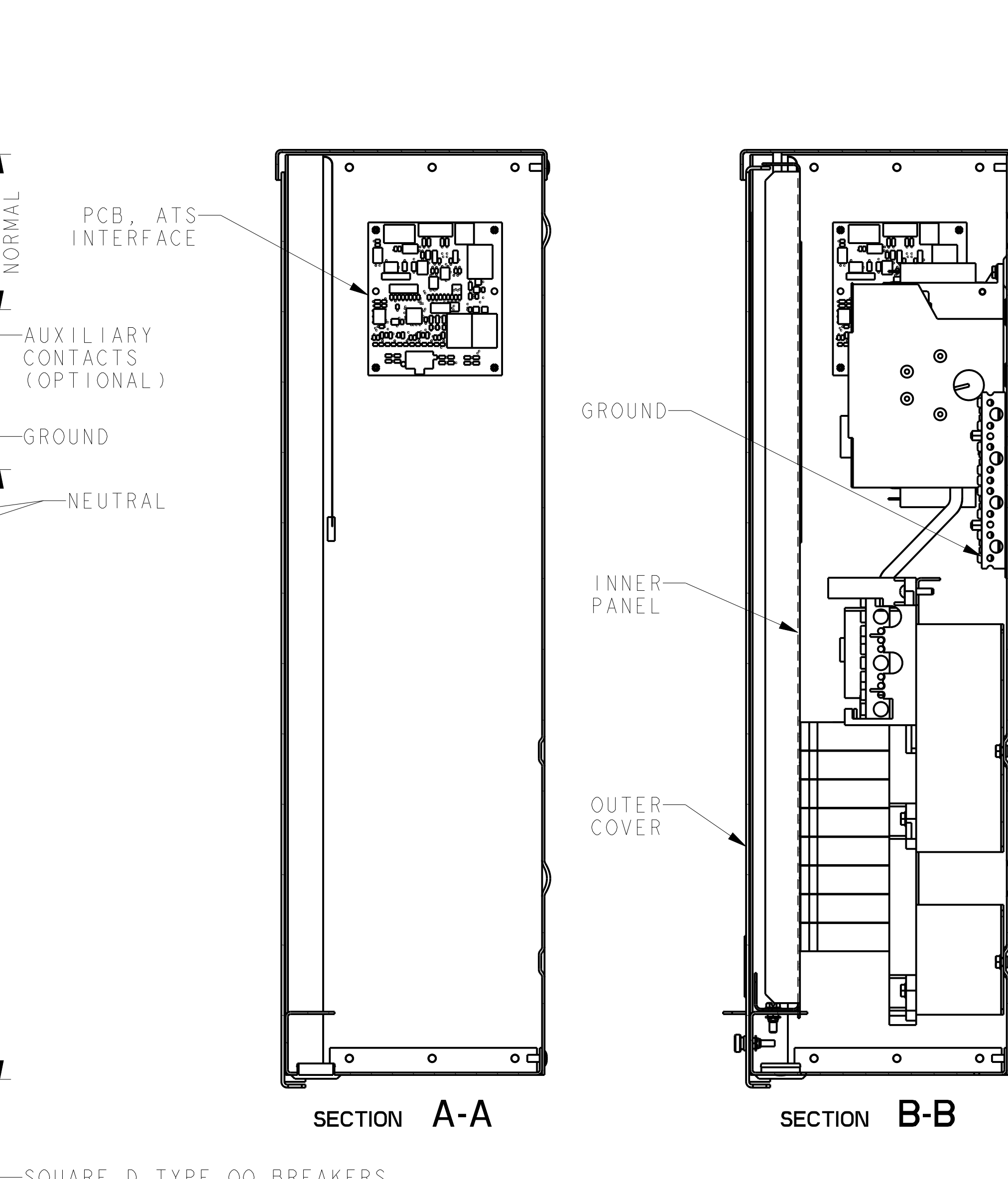
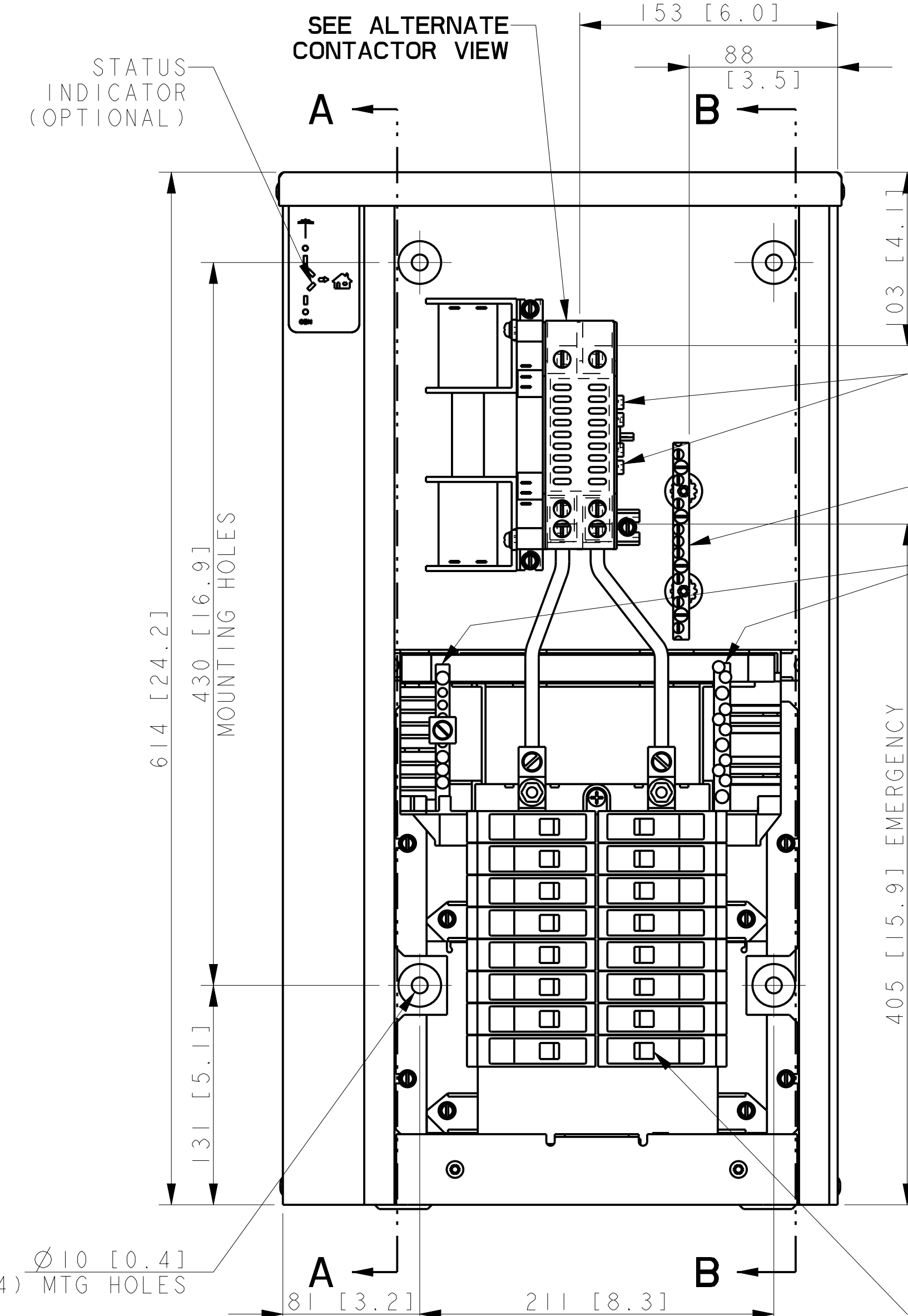


SWITCH RATING (AMPS)	SCREW TYPE TERMINALS FOR EXTERNAL POWER CONNECTION		
	RANGE OF AL-CU WIRE SIZES		
	CONTACTOR (PER PHASE)	NEUTRAL	GROUND
100	(1) #14-1/0 AWG	(30) #4-14 AWG (3) 1/0-14 AWG (1) 2/0 AWG	(9) #14-#6 AWG (4) 1/0-#14 AWG



OUTER COVER SHOWN

INNER PANEL SHOWN

DIMENSION IN [] ARE INCHES.
 FINISH: ANSI 49 GRAY
 REFER TO OPERATOR'S MANUAL PRIOR TO INSTALLATION AND OPERATION OF UNIT.
 APPROXIMATE WEIGHT 8 Kg (18 LBS.)

100A LOAD CENTER
 (COVER & INNER PANEL REMOVED TO SHOW DETAIL)

SQUARE D TYPE QO BREAKERS
 SEE LOAD CENTER CHART BELOW
 FOR FURTHER INFORMATION
 (CIRCUIT BREAKERS NOT INCLUDED)

LOAD CENTER CHART INFORMATION				
SPACES	MAXIMUM NUMBER OF SINGLE POLE CIRCUITS	MAXIMUM NUMBER OF TANDEM CIRCUIT BREAKERS	MAIN TERMINAL SIZE AWG Al or Cu	NUMBER OF BRANCH NEUTRAL TERMINALS
16	24	8	4-2/0	31

100A
 MODEL RXT
 LOAD CENTER
 TYPE 3R ENCLOSURE

REV	DATE	ON COMPOSITE DWGS. SEE PART NO. FOR REVISION LEVEL	BY
-	4-3-14	NEW DRAWING [CT88602]	BTW
A	6-7-16	LOGO REMOVED; [CT148955]	BTW
B	10-4-17	(D-1) (9)#14-#6AWG WAS (9)#14-#4AWG, (4)1/0-#14AWG ADDED;(D-5)ALTERNATE CONTACTOR VIEW ADDED;[CT179697]	BTW

KOHLER CO. METRIC PRO-E
 POWER SYSTEMS, KOHLER, WI 53044 U.S.A.
 THIS DRAWING IN DESIGN AND DETAIL IS KOHLER CO. PROPERTY AND MUST NOT BE USED EXCEPT IN CONNECTION WITH KOHLER CO. WORK. ALL RIGHTS OF DESIGN OR INVENTION ARE RESERVED.

TITLE: **DIMENSION PRINT, 100A LOAD CENTER**

SCALE: 0.40 CAD NO. SHEET 1 of 1

DWG NO. **ADV-8690**