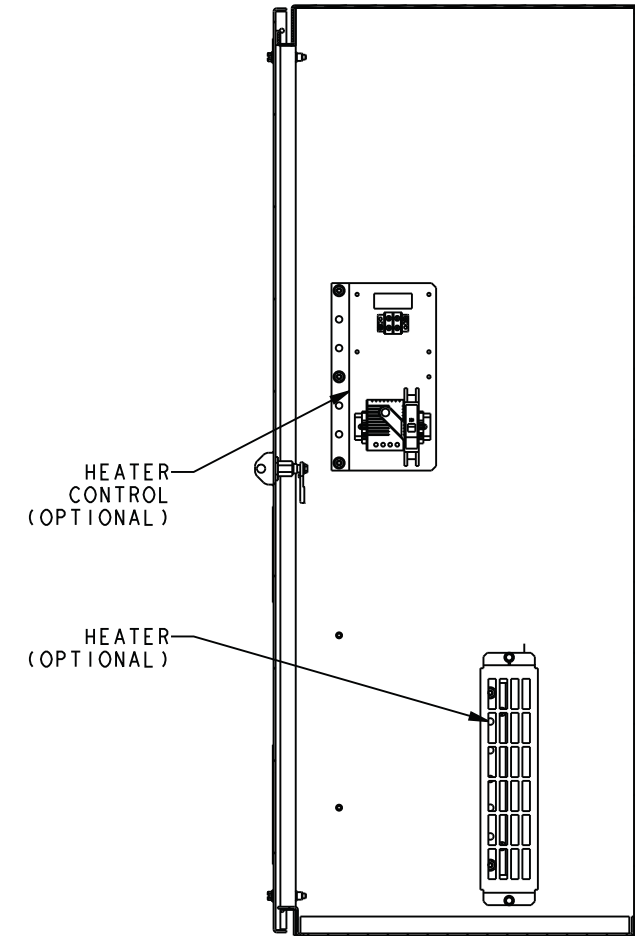
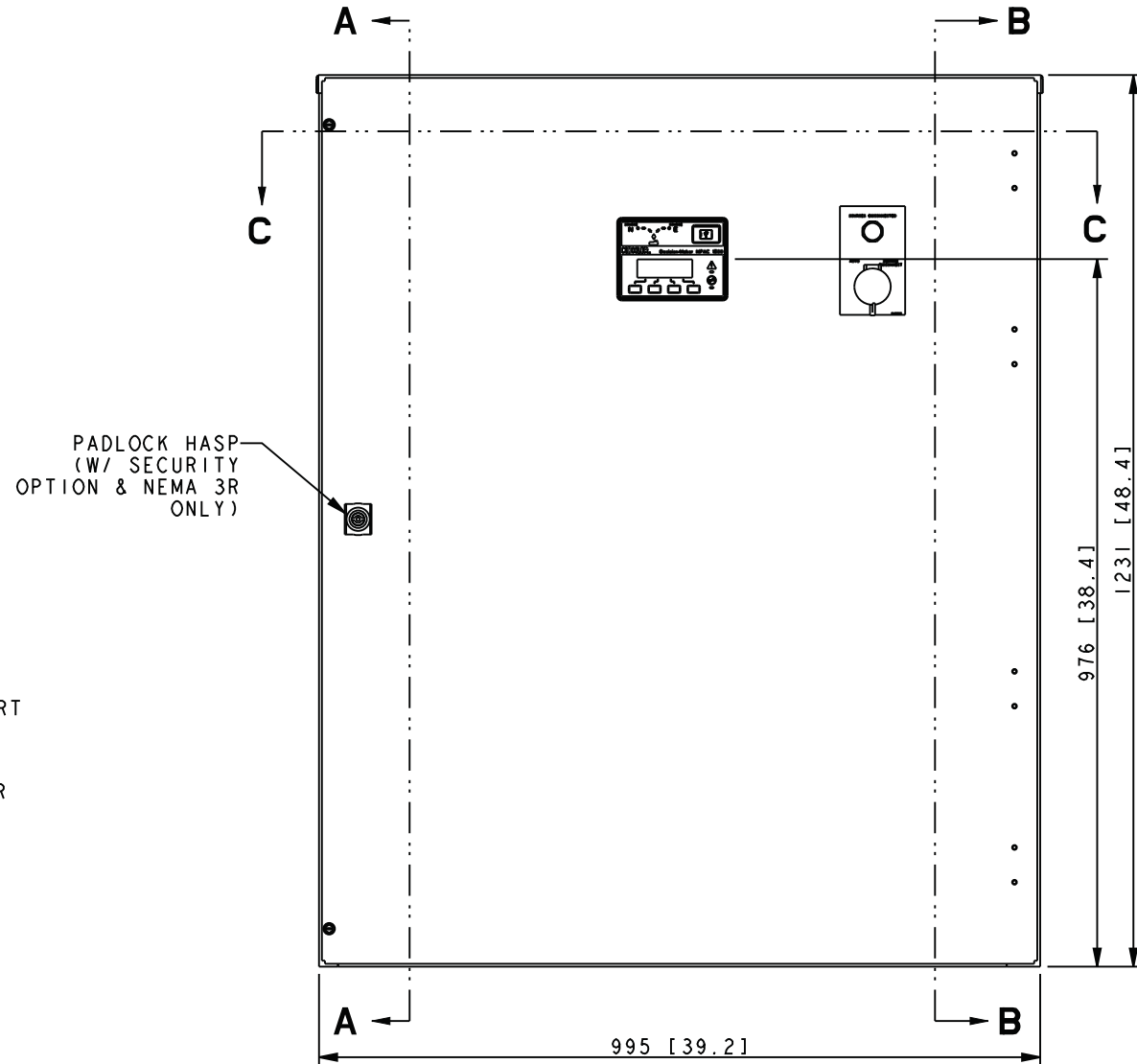
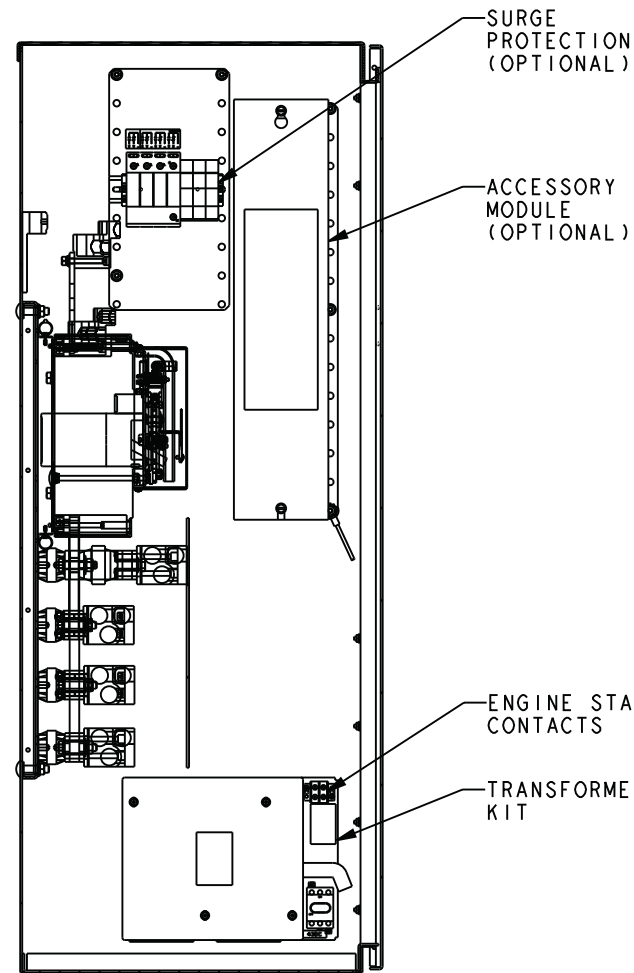
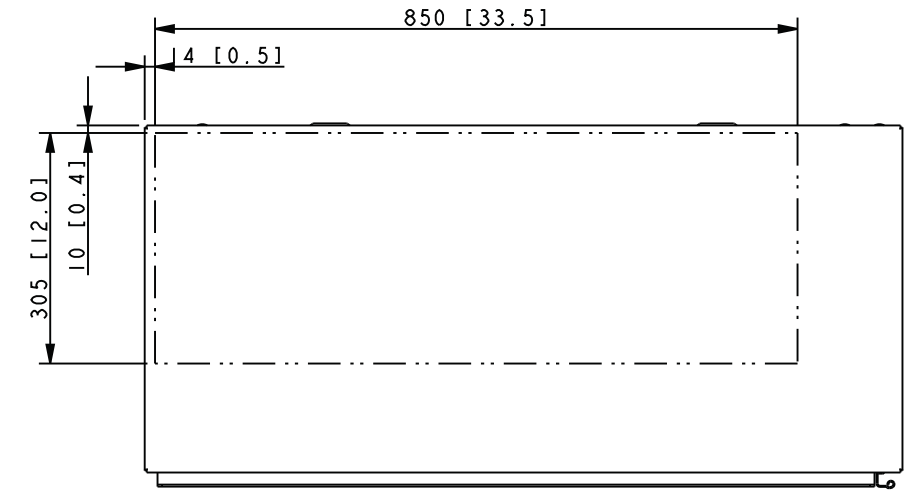
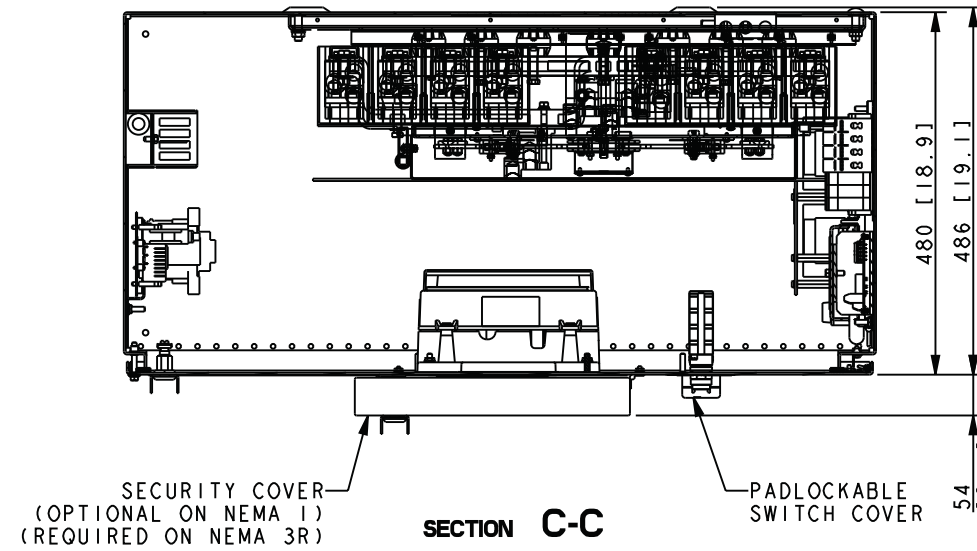


- NOTES:
1. DIMENSION IN [] ARE INCHES.
 2. FINISH:
NEMA 1 & 3R: ANSI 49 GRAY
 3. REFER TO OPERATOR'S MANUAL PRIOR TO INSTALLING SWITCH & OPERATION OF SWITCH.
 4. OMIT CENTER POLE ON 2 POLE SWITCHES.
 5. FOR SEISMIC CERTIFIED UNITS, REFER TO ADV-7456 AND INSTALLATION INSTRUCTIONS.

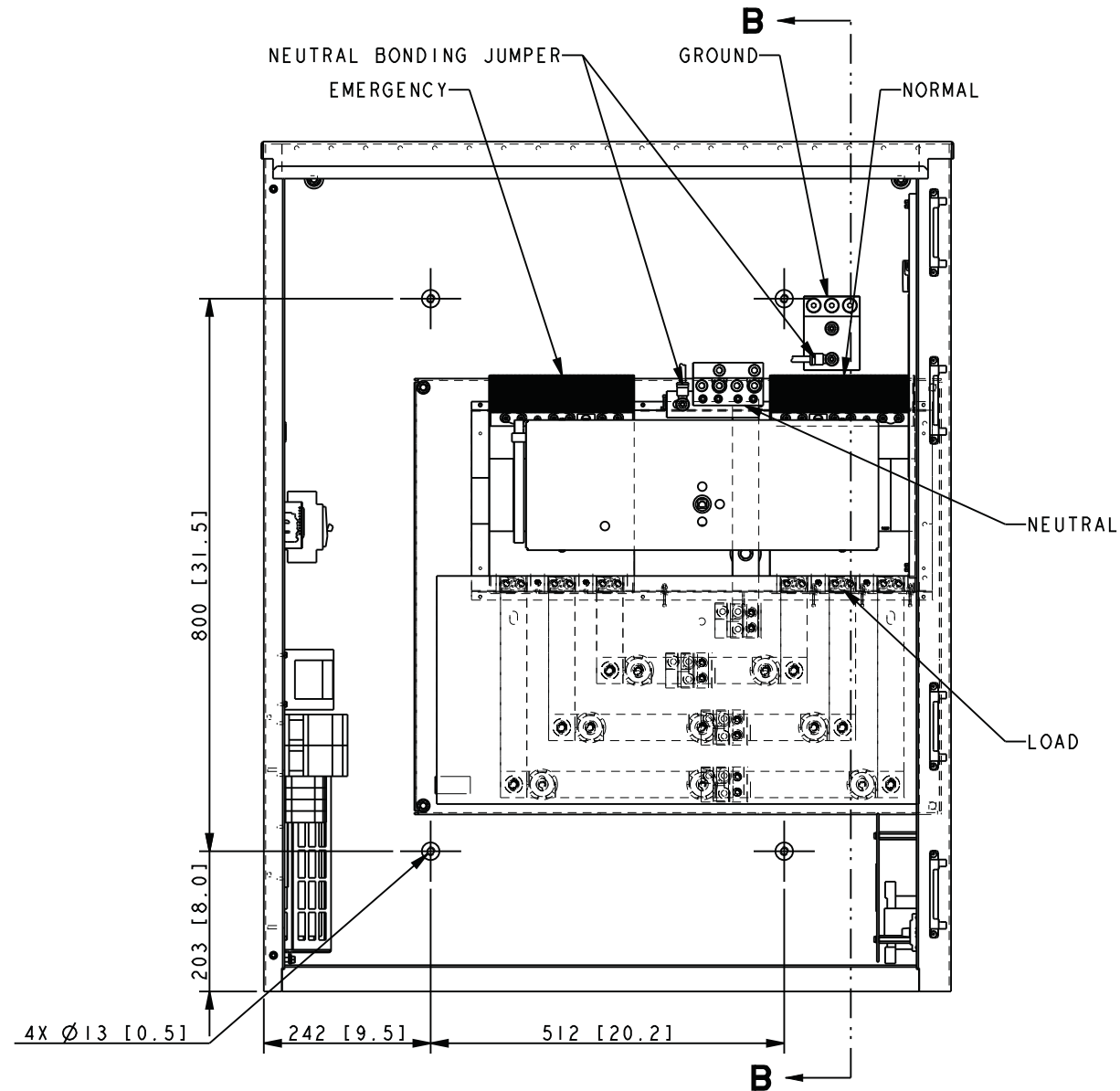


NOTE:
ALLOW FOR MINIMUM DOOR SWING CLEARANCE OF 1032 [40.7] IN FRONT OF CABINET.

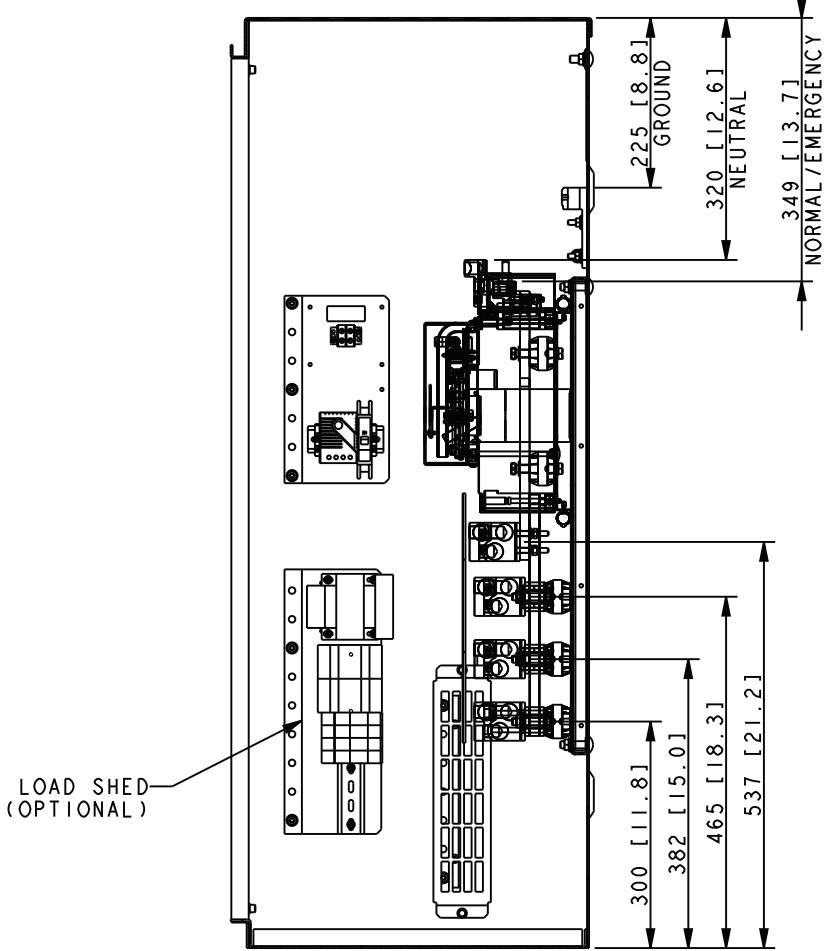
REV	DATE	ON COMPOSITE DWGS. SEE PART NO. FOR REVISION LEVEL	BY	UNLESS OTHERWISE SPECIFIED: 1) DIMENSIONS ARE IN MILLIMETERS 2) TOLERANCES ARE:	BTW	APPROVALS	DATE	TITLE
-	8-27-13	NEW DRAWING [CT54441]	BTW	X.XX ± 0.25 X.X ± 1.0 X ± 1.5 ANGLES ± 0° 30'	BTW		8-27-13	KOHLER CO. METRIC PRO-E POWER SYSTEMS, KOHLER, WI 53044 U.S.A. THIS DRAWING IN DESIGN AND DETAIL IS KOHLER CO. PROPERTY AND MUST NOT BE USED EXCEPT IN CONNECTION WITH KOHLER CO. WORK. ALL RIGHTS OF DESIGN OR INVENTION ARE RESERVED.
				THIRD ANGLE PROJECTION				DIMENSION PRINT
								SCALE 0.20 CAD NO. SHEET 1 of 2
								ADV-8614 D

SEE ADV-8565 FOR FULL MODEL CODE DEFINITION

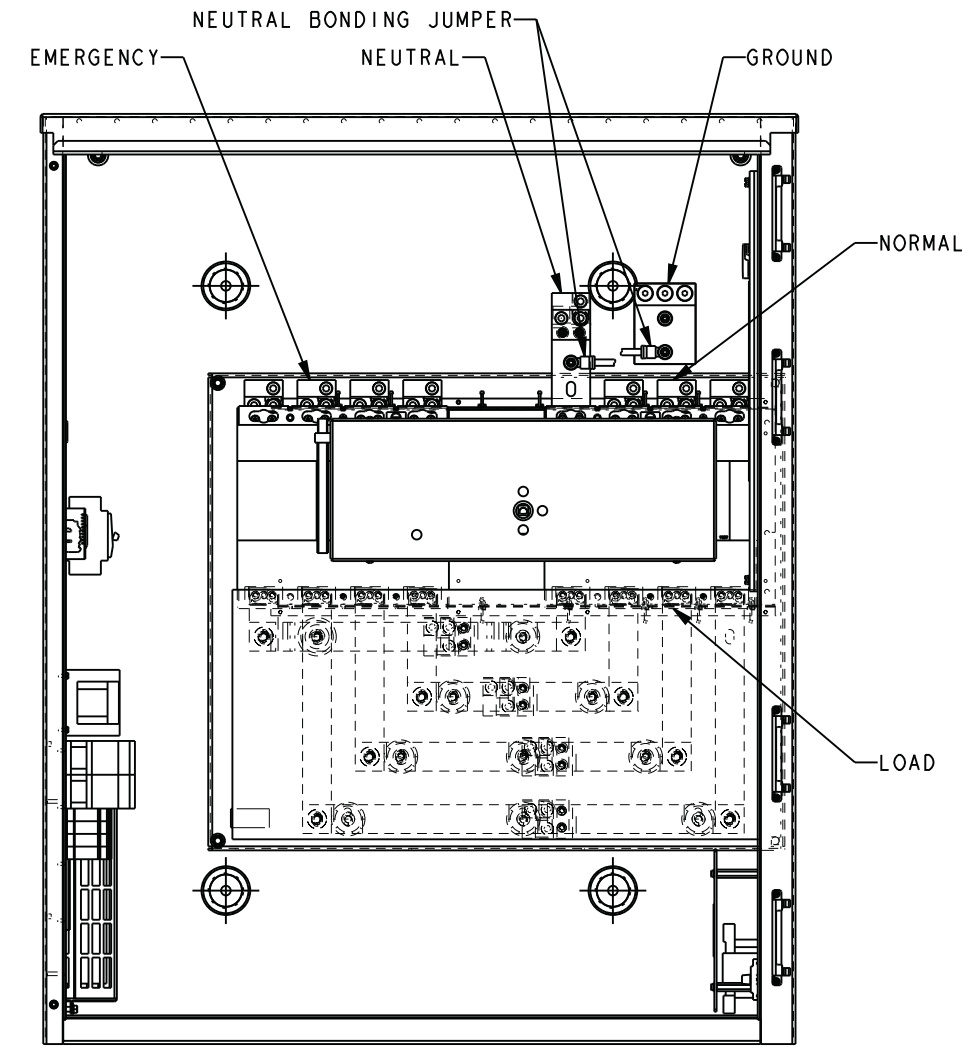
STYLE	MECHANISM	TRANSITION	MPAC LOGIC	VOLTS	POLES	NEUTRAL	ENCLOSURE	AMPS	CONNECTION
KEP MCCB	SERVICE ENT	PROGRAMMED	1500	208-480	2, 3, 4	SOLID, SW	1, 3R	400, 600, 800	STANDARD



**800 AMP 3 POLE SHOWN
(DOOR REMOVED TO SHOW INTERNAL COMPONENTS)**
NOTE: OMIT CENTER POLE ON 2 POLES SWITCHES.



SECTION B-B



**800 AMP 4 POLE SHOWN
(DOOR REMOVED TO SHOW INTERNAL COMPONENTS)**

SEISMIC MOUNTING NOTE:
FOR SEISMIC CERTIFIED UNITS,
MOUNT WITH THE FOLLOWING HARDWARE:
WALL MOUNTED (STEEL)
Ø9.53 [0.375] Dia. SAE GRADE 1/ ASTM A307 BOLTS.
WALL MOUNTED (CONCRETE)
Ø9.53 [0.375] Dia. HILTI KWIK BOLT TZ-CS WITH MIN.
EMBEDMENT 50.8 [2.00]; EDGE DISTANCE OF 101.6 [4.00]
ON A 101.6 [4.00] THICK 4000 PSI CONCRETE WALL.
HARDWARE TO COMPLY WITH SPECIFICATIONS
ON ADV-7456.

SERVICE DISCONNECT BREAKERS ARE 80% RATED.
CONTINUOUS LOAD CURRENT IS NOT TO EXCEED 80% OF
BREAKER RATING.

SCREW TYPE TERMINALS FOR EXTERNAL POWER CONNECTIONS			
SWITCH RATING (AMPS)	RANGE OF AL/CU WIRE SIZE		
	CIRCUIT BREAKER PER PHASE	NEUTRAL	GROUND
400	(2) 2/0-500 KCMIL	(6) 2/0-500 KCMIL	(3) #6-350 KCMIL
600	(2) 2/0-500 KCMIL	(6) 2/0-500 KCMIL	(3) #6-350 KCMIL
800	(3) 2/0-500 KCMIL	(9) 2/0-500 KCMIL	(3) #6-350 KCMIL

AMPS	APPROX. WEIGHTS KG (LBS)		
	2 POLE	3 POLE	4 POLE
400	195 [430]	195 [430]	195 [430]
600	200 [441]	200 [441]	200 [441]
800	200 [441]	200 [441]	200 [441]

REV	DATE	ON COMPOSITE DWGS. SEE PART NO. FOR REVISION LEVEL	BY
-	8-27-13	NEW DRAWING [CT54441]	BTW

UNLESS OTHERWISE SPECIFIED:
1) DIMENSIONS ARE IN MILLIMETERS
2) TOLERANCES ARE:
X.XX ± 0.25
X.X ± 1.0
X ± 1.5
ANGLES ± 0° 30'
SURFACE FINISH MAX.
THIRD ANGLE PROJECTION

APPROVALS	DATE
DRAWN BTW	8-27-13
CHECKED BTW	8-27-13
APPROVED MTL	8-27-13

KOHLER CO. METRIC PRO-E
POWER SYSTEMS, KOHLER, WI 53044 U.S.A.
THIS DRAWING IN DESIGN AND DETAIL IS KOHLER CO.
PROPERTY AND MUST NOT BE USED EXCEPT IN
CONNECTION WITH KOHLER CO. WORK. ALL RIGHTS OF
DESIGN OR INVENTION ARE RESERVED.

TITLE: **DIMENSION PRINT**

SCALE 0.20 CAD NO. SHEET 2 of 2
DWG NO. **ADV-8614**