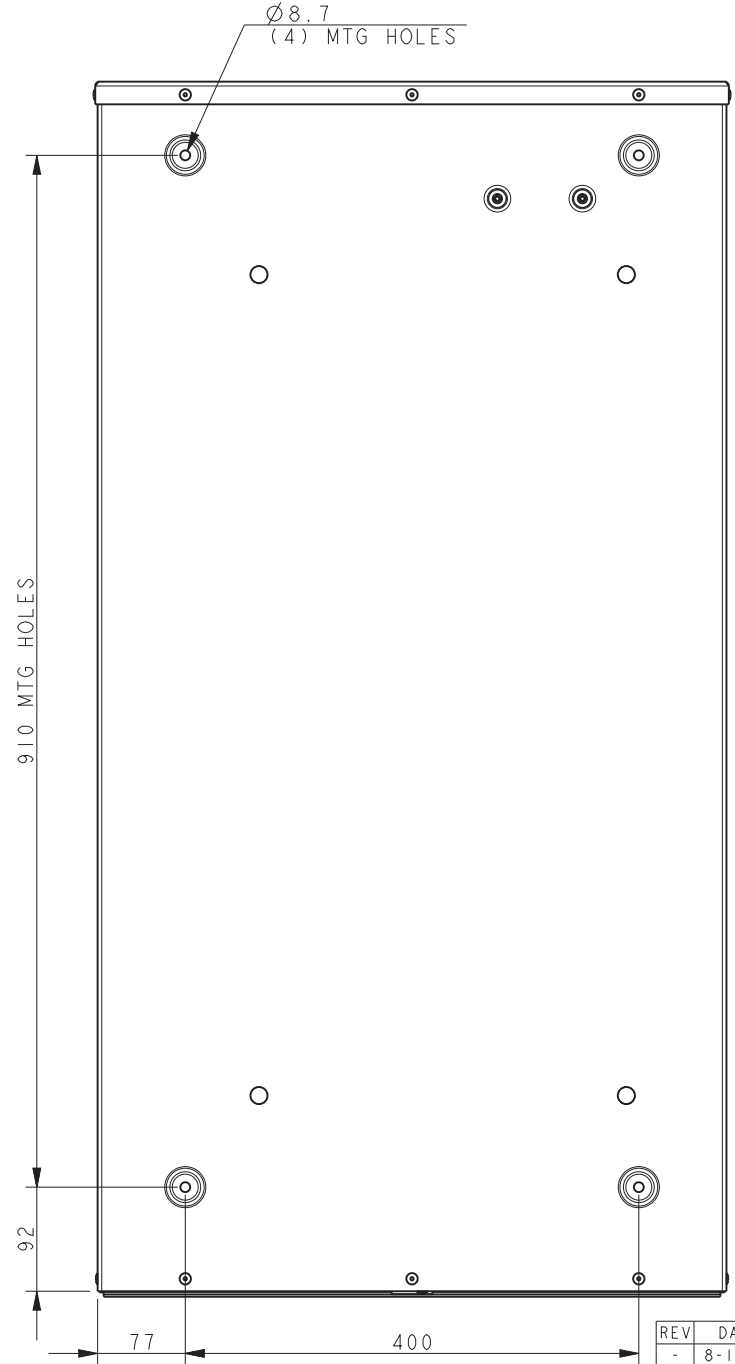
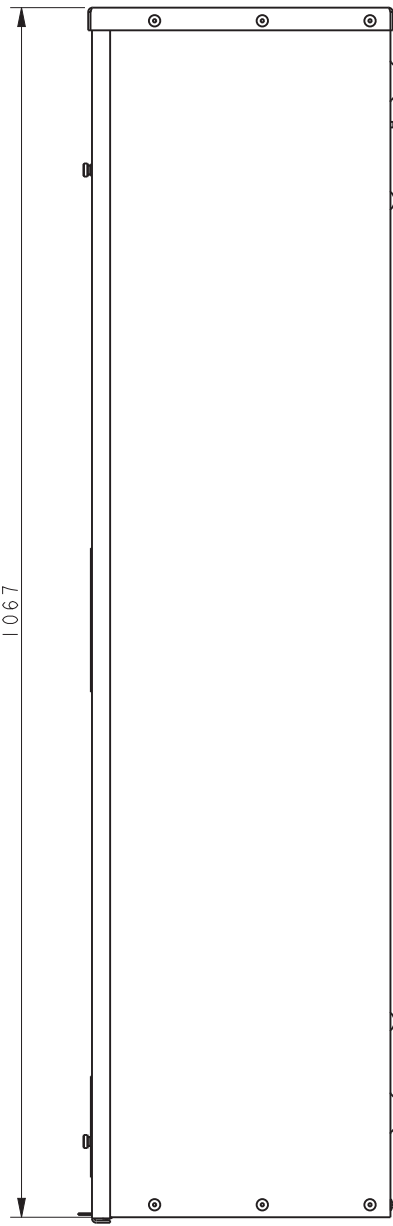
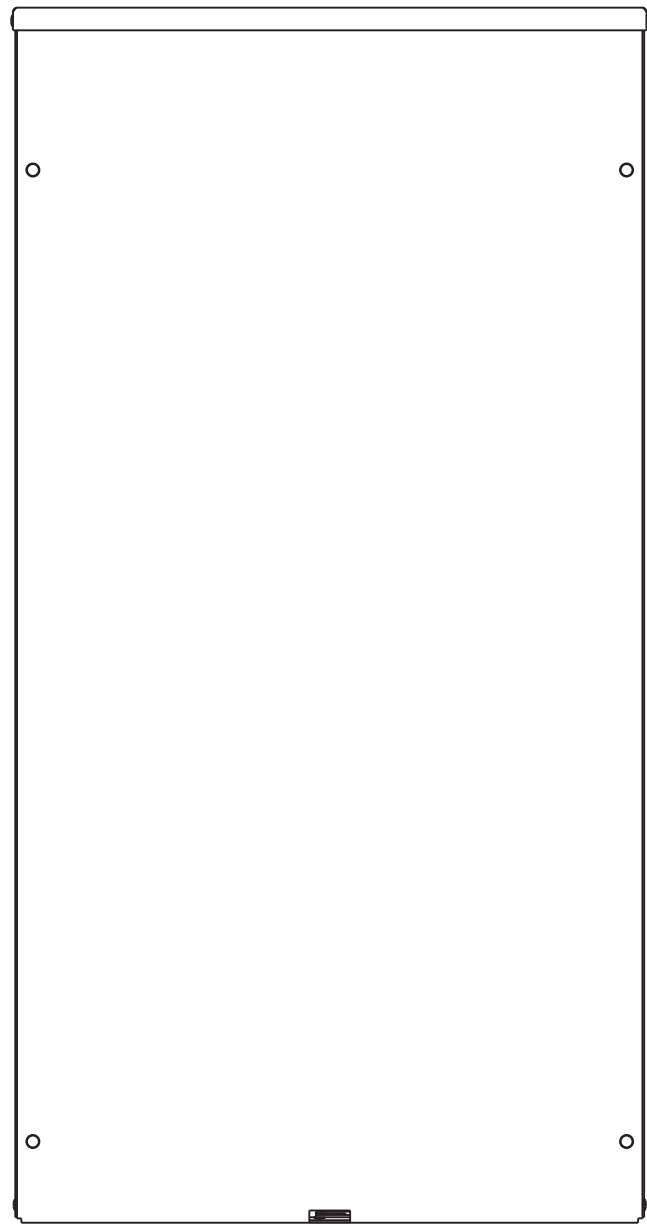


PADLOCK HASP

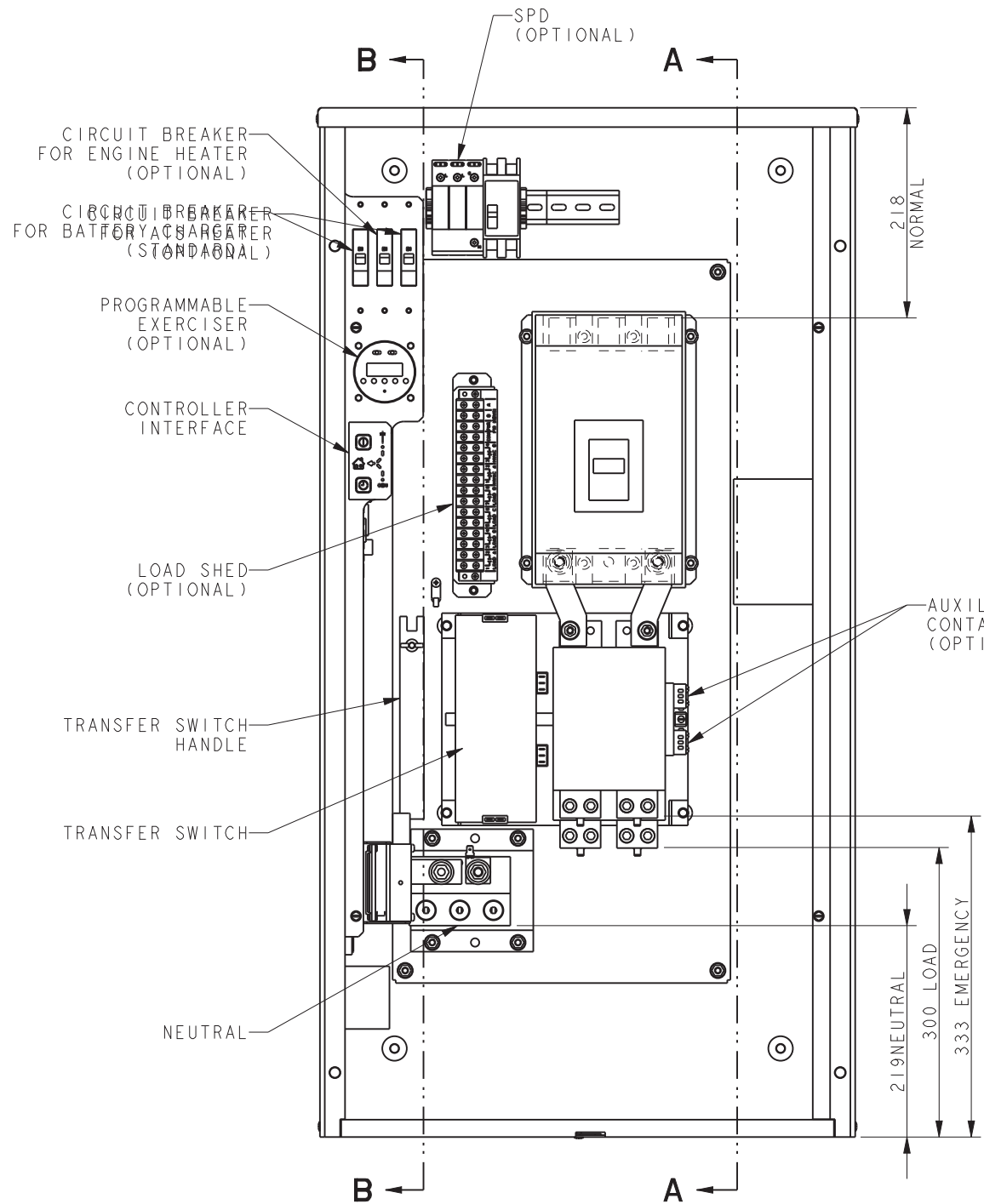


NOTES:
 DIMENSIONS IN [] ARE INCHES.
 FINISH: ANSI 49 GRAY.
 REFER TO OPERATOR'S MANUAL PRIOR TO INSTALLATION AND OPERATION OF UNIT.
 POWER CABLES AND CONTROL WIRING MUST BE RUN IN METAL CONDUIT
 APPROXIMATE WEIGHT: 46 Kg (101 LBS.)
 SERVICE DISCONNECT BREAKER IS 400A, 80% REATED. CONTINUOUS LOAD CURRENT IS NOT TO EXCEED 80% OF BREAKER RATING.

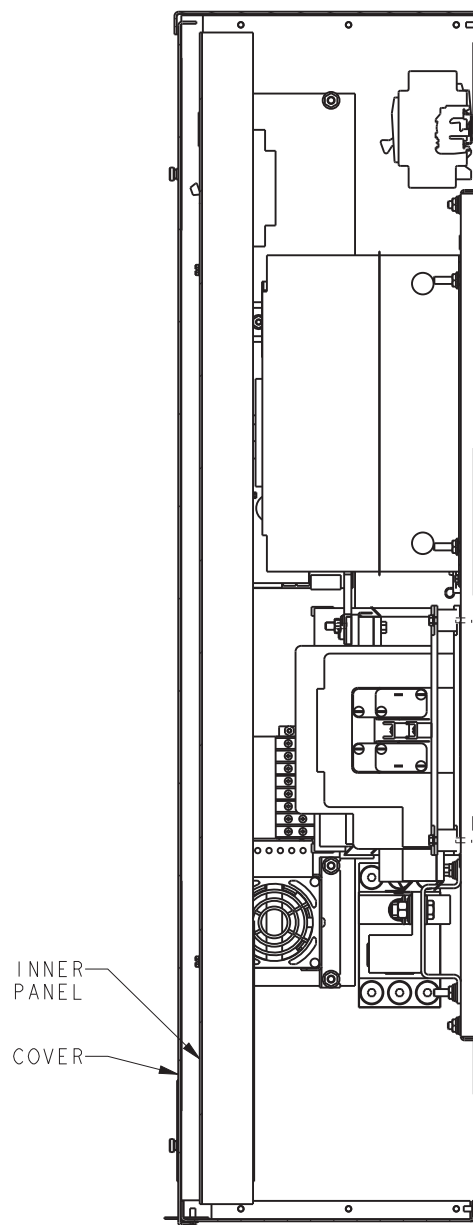
MODEL R
 MPAC 500
 400A 240V
 SERVICE ENTRANCE
 NEMA 3R

REV	DATE	ON COMPOSITE DWGS. SEE PART NO. FOR REVISION LEVEL	BY
-	8-17-11	NEW DRAWING [90714-4]	BTW
A	3-11-13	SEE SHEET 2 [CT40695]	BTW
B	7-16-13	SEE SHEET 2 [CT48126]	BTW
C	1-9-15	SEE SHEET 2 [CT103061]	BTW
D	1-12-18	SEE SHEET 2 [CT183231]	BTW
E	4-10-18	SEE SHEET 2 [CT186584]	RMJ

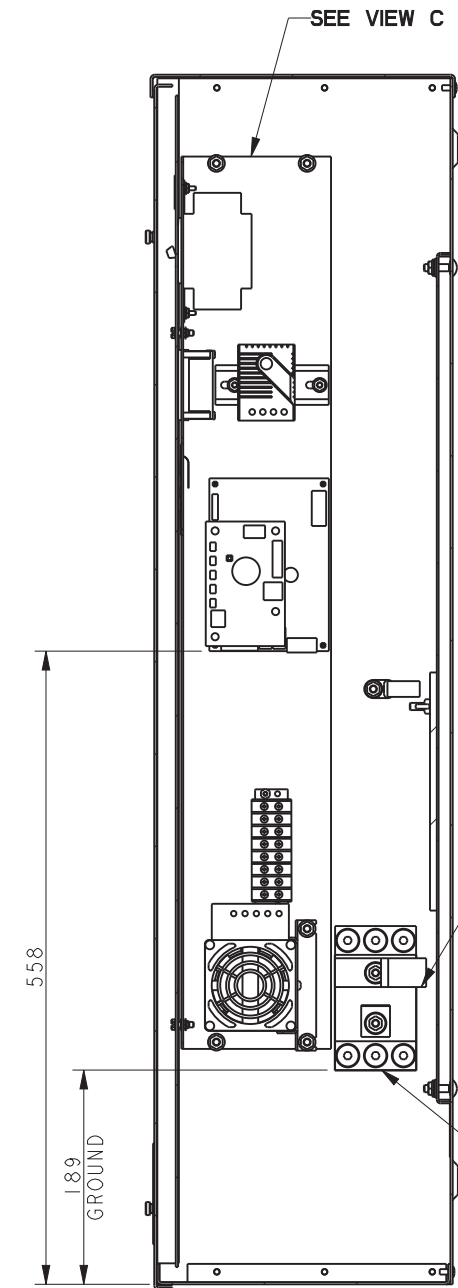
UNLESS OTHERWISE SPECIFIED - 1) DIMENSIONS ARE IN MILLIMETERS 2) TOLERANCES ARE:		KOHLER CO. METRIC PRO-E POWER SYSTEMS, KOHLER, WI 53044 U.S.A. THIS DRAWING IN DESIGN AND DETAIL IS KOHLER CO. PROPERTY AND MUST NOT BE USED EXCEPT IN CONNECTION WITH KOHLER CO. WORK. ALL RIGHTS OF DESIGN OR INVENTION ARE RESERVED.
X.XX ± 0.25	SURFACE FINISH MAX.	
X.X ± 1.0		TITLE DIMENSION PRINT
X ± 1.5		SCALE 0.30 CAD NO. SHEET 1 of 2
ANGLES ± 0° 30'		DWG NO. ADV-8445 D
THIRD ANGLE PROJECTION		
APPROVALS	DATE	
DRAWN BTW	8-17-11	
CHECKED BTW	8-17-11	
APPROVED MTL	8-17-11	



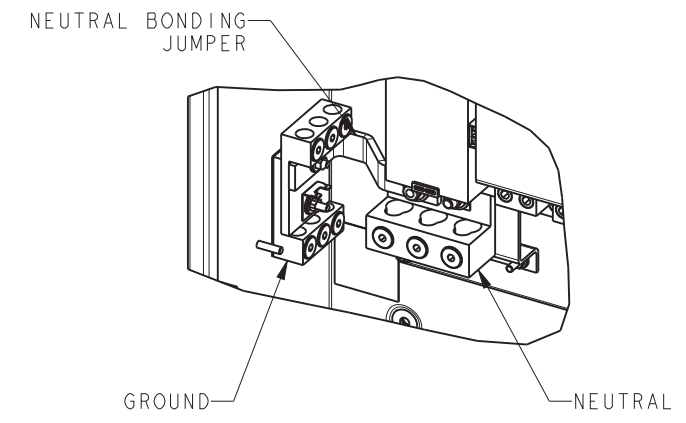
COVER & INNER PANEL REMOVED TO SHOW DETAIL



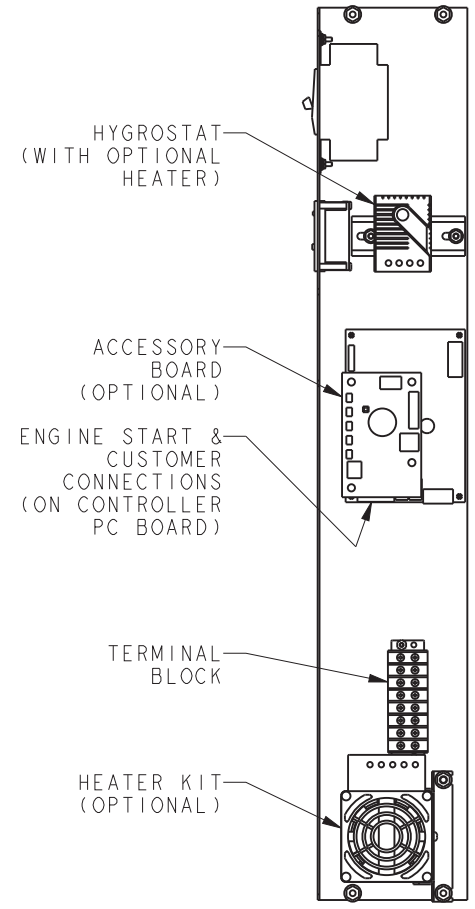
SECTION A-A



SECTION B-B



VIEW D



VIEW C

A: SCREW TYPE TERMINALS FOR EXTERNAL POWER CONNECTION

SWITCH RATING (AMPS)	RANGE OF AL-CU WIRE SIZES			
	NORMAL (PER PHASE)	EMERGENCY & LOAD (PER PHASE)	NEUTRAL	GROUND
400	(2) 1 AWG TO 250 KCMIL (1) 1 AWG TO 600 KCMIL	(2) #6 TO 250 KCMIL	(6) 1/0 TO 250 KCMIL (3) 4 TO 600 KCMIL	(6) #6 TO 3/0 AWG
TORQUE	375 lbf-in (42.4 Nm)	275 lbf-in (31.1 Nm)	UP TO 250 KCMIL 275 lbf-in (31.1 Nm) 300 KCMIL TO 600 KCMIL 500 lbf-in (56.5 Nm)	275 lbf-in (31.1 Nm)

MODEL R
MPAC 500
400A 240V
SERVICE ENTRANCE
NEMA 3R

REV	DATE	ON COMPOSITE DWGS. SEE PART NO. FOR REVISION LEVEL	BY	UNLESS OTHERWISE SPECIFIED - 1) DIMENSIONS ARE IN MILLIMETERS 2) TOLERANCES ARE:
A	3-11-13	(A-8, -6) POWER CONNECTION CHART UPDATED; [CT40695]	BTW	X.XX ± 0.25 X.X ± 1.0 X ± 1.5
B	7-16-13	(C-7) LOAD SHED OPTION SHOWN; [CT48126]	BTW	ANGLES ± 0° 30' MAX.
C	1-9-15	(A-7) (2) #6 TO 250 KCMIL WAS (2) 1/0 TO 250 KCMIL, (1) 4 TO 600 KCMIL REMOVED; (A-8) (1) 1 AWG TO 600 KCMIL ADDED, (2) 1 AWG TO 250 KCMIL WAS (2) 3/0 TO 250 KCMIL; [CT103061]	BTW	THIRD ANGLE PROJECTION
D	1-12-18	(A-5) (6) #6 TO 3/0 AWG WAS (3) #6 TO 3/0 AWG; [CT183231]	BTW	APPROVALS DATE
E	4-10-18	(A-8) TORQUE INFO ADDED TO TABLE [CT186584]	RMJ	CHECKED BTW 8-17-11 APPROVED MTL 8-17-11

KOHLER CO. METRIC PRO-E
POWER SYSTEMS, KOHLER, WI 53044 U.S.A.
THIS DRAWING IN DESIGN AND DETAIL IS KOHLER CO. PROPERTY AND MUST NOT BE USED EXCEPT IN CONNECTION WITH KOHLER CO. WORK. ALL RIGHTS OF DESIGN OR INVENTION ARE RESERVED.

DIMENSION PRINT

SCALE 0.30 CAD NO. SHEET 2 of 2
DWG NO. **ADV-8445**