

BEFORE YOU BEGIN



WARNING: Risk of personal injury or product damage. Handle with care. Vitreous China can break or chip if the bolts and nuts are over-tightened, or if the product is handled carelessly.

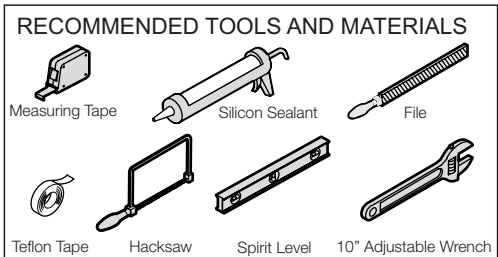
- Observe all local plumbing and building codes.
- Carefully inspect the new toilet for any damage.
- If the In-wall tank is not installed, refer to the manufacturer's instructions before installation.

ORDERING INFORMATION

PRESQU'ILE™ Wall-hung Toilet.....K-18133IN-2SR/2SP*

Includes PRESQU'ILE™ Wall-hung Toilet Bowl.....K-19080IN-2*

Includes PRESQU'ILE™ Quiet-close Toilet Seat.....K-8798IN-UF/PP*



RECOMMENDED TANKS

Description	In-wall Tank	Cover/Faceplate
Instaflush In-Wall Tank	K-77027IN-M/P-NA	K-4417IN-M* ,K-8857IN-M* ,K-75890IN-M/P* ,K-75891IN-M* ,K-5413IN-M/P*

ROUGHING-IN

K-19080IN-2

P-Trap
Unit: Inches (cm)

NOTES:

- Fixture dimensions are nominal and conform to tolerances as per ASME Standard A112. 19.2M.
- Product illustrations shown are representative only; actual products may vary.
- Kohler reserves the right to make changes in product characteristics, packaging or availability at any time without notice.

CAUTION : Do not use white cement or high lime-content cement to install this toilet. The expansion of cement due to rise in temperature may cause the toilet to crack or be damaged. Kohler is not responsible for any damage due to installation with the use of cement.

** - indicates WC mounting dimension

INSTALLATION GUIDELINE

<p>1 Cut bolts if needed. File bolt ends.</p>	<p>2 Mount the sleeve on the bolts and remove inlet plug.</p>	<p>3 If connector is not already installed, apply teflon tape on the connector & install.</p>	<p>4 Slide on the gaskets as shown.</p>
<p>5 Install the accessory kit into the installation hole of the toilet.</p>	<p>6 Slide the inlet pipe into the wall openings for waste pipe. Test fit the toilet.</p>	<p>7 Note the distance between the wall and the toilet at the location shown. Measure excess length "A" for the inlet pipe.</p>	<p>8 Cut and file the inlet pipe to the proper length by removing excess length "A".</p>
<p>9 Slide the outlet pipe into the wall openings for waste pipe. Test fit the toilet.</p>	<p>10 Note the distance between the wall and the toilet at the location shown. Measure excess length "B" for the outlet pipe.</p>	<p>11 Cut and file the outlet pipe to the proper length by removing excess length "B".</p>	<p>12 Add silicon sealant in the gasket grooves.</p>
<p>13 Mount the toilet on the wall.</p>	<p>14 Level the toilet and tighten accessories using allen key. Close the installation holes using the caps.</p>	<p>15 Flush the toilet. Check for leaks. Seal connections if required.</p>	<p>16 Seal around the edges. Do not use cement.</p>

Recommended Installation Parts

<p>Inlet Connection (Not Supplied)</p>	<p>1169504</p> <p>1169507</p>	<p>Wall Installation Kit** 1279116-0</p>	<p>OR</p> <p>Wall Installation Kit** E5534-CP</p>
<p>Outlet Connection (Not Supplied)</p>	<p>1046327</p> <p>1046327-S</p>		

Note:- Dimension A and B (as shown in picture 6 to 10 above) to be adjusted as per specific site requirements.
 ****Wall Installation kit shown above is supplied with toilet.

Toll Free 1800 103 2244

kohler.co.in

© 2006 Kohler Co.