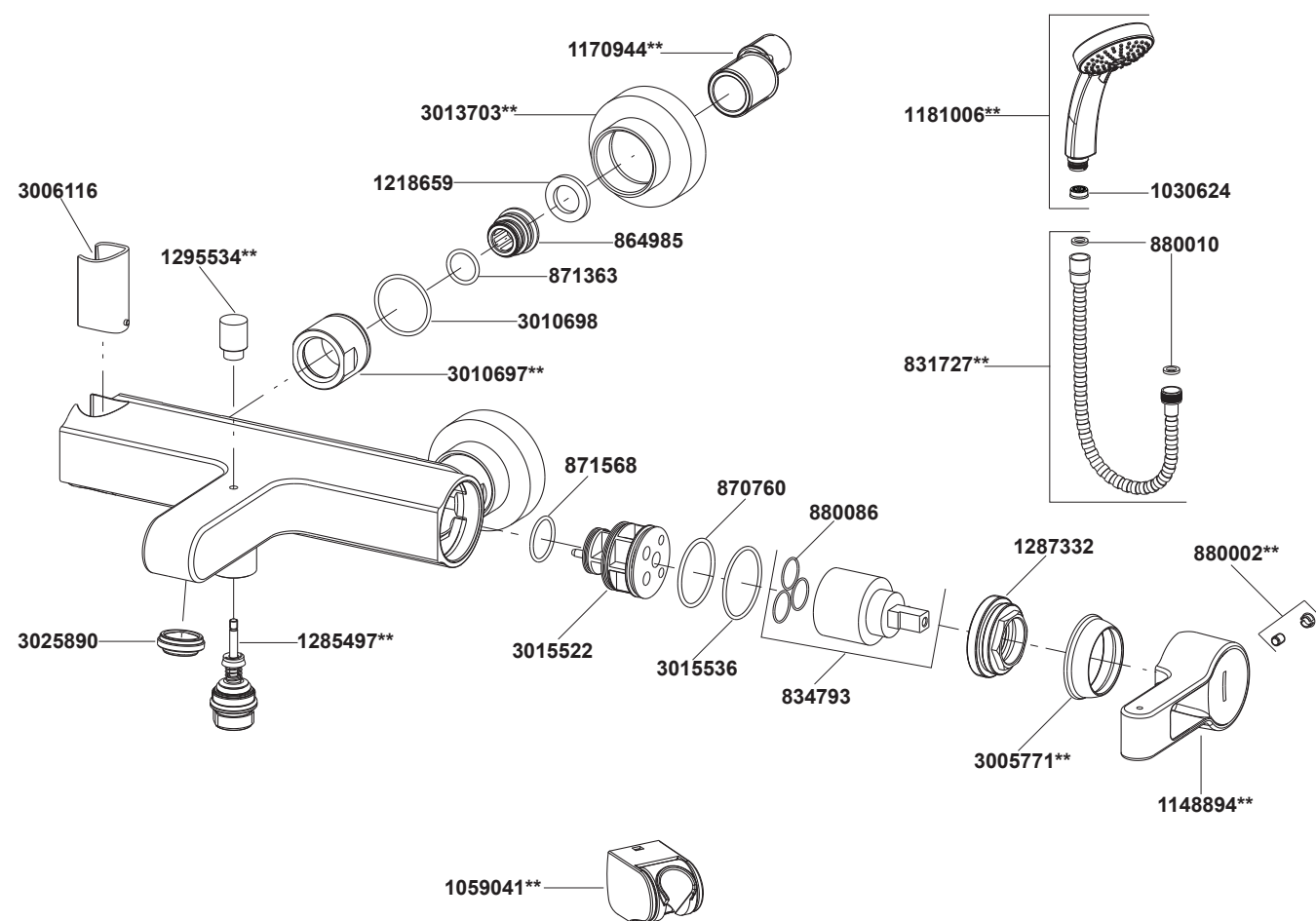


R13527T-B4 Wall-Mount Bath & Shower Faucet



****Color code must be specified when ordering**

R13527T-B4 Wall-Mount Bath & Shower Faucet

BEFORE YOU BEGIN

All information is based on the latest product information available at the time of publication. Kohler Co. reserves the right to make changes in product characteristics, packaging, or availability at any time without notice.

Please leave these instructions for the consumer. They contain important information.

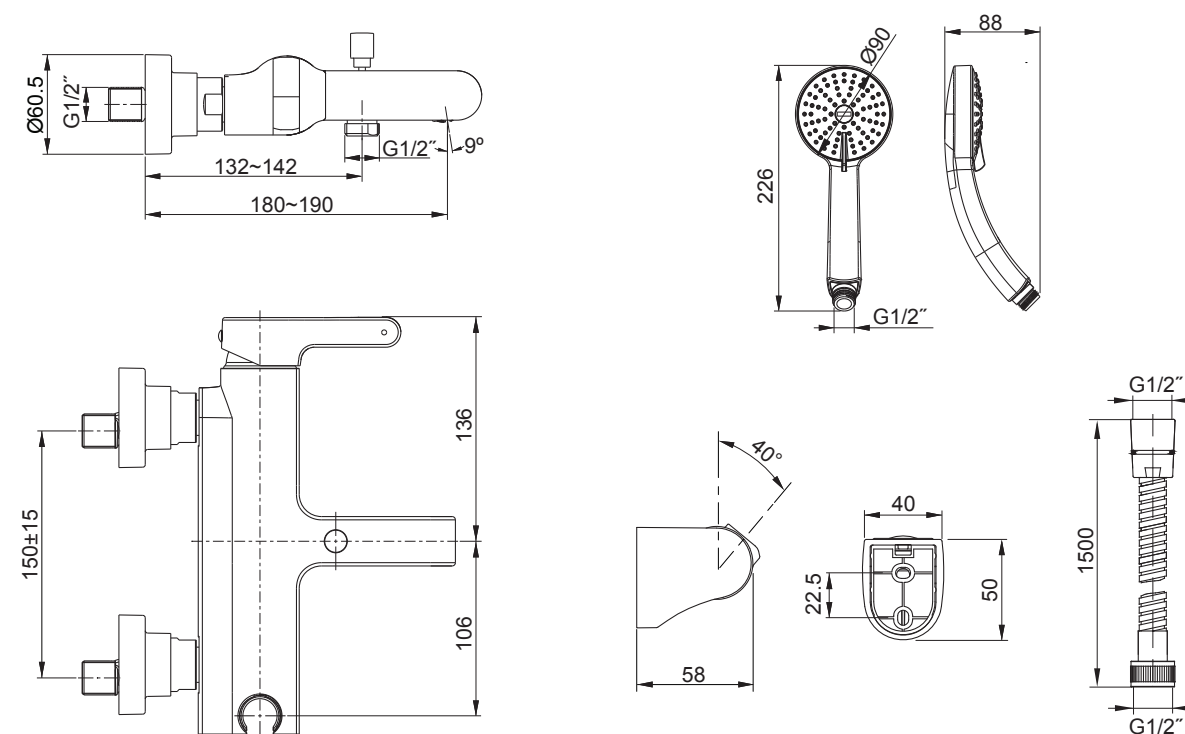
NOTES:

- 1.Flush the water supply pipes thoroughly to remove debris.
- 2.The minimum inlet water pressure for the diverter is 0.05MPa(0.5bar).
3. The highest working pressure for handspray is 0.5MPa(5bar). If it exceeds 0.5MPa(5bar), a pressure reducer is needed. The highest water and environment temperature is 60°C. Please keep handspray, shower head and the shower arm away from heater, or it may become damaged and cause injury to the user.

HANDLE OPERATION

Lift the handle gently. Turn clockwise for hot water, Turn counter-clockwise for cold water. Water flows out from spout when faucet diverter is in the normal position and it's diverted to handspray when the diverter is lifted.

ROUGH-IN DIMENSIONS



INSTALLATION

How to Install the Faucet

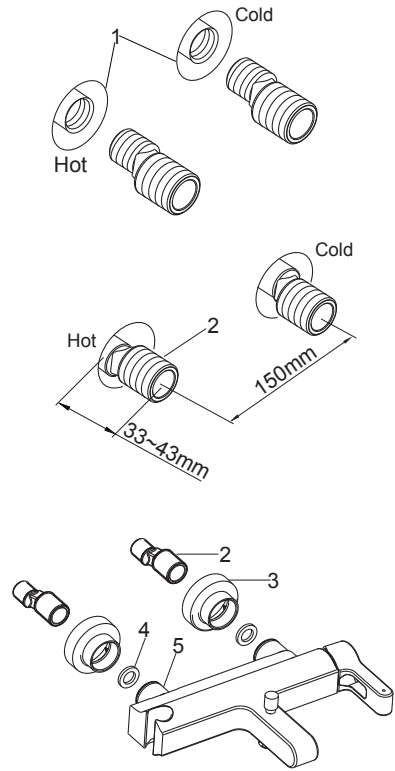
To perform installation, installer must provide G1/2" female supply fittings(1), spaced 150mm apart and horizontally. The supply fittings should be vertical and not beyond the finished wall. Hot supply pipe must be located on the left.

Flush the water supply pipes thoroughly to remove debris.

Install the two offset connectors(2) into the hot and cold supply pipes. Use appropriate thread sealants or thread tape on pipe threads.

Adjust the center-to-center distance between the connectors to 150mm and horizontally. They should extend 33 to 43mm from finished wall.

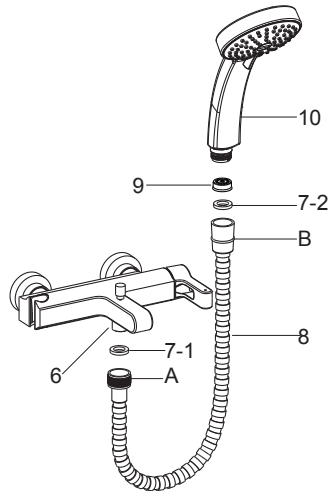
Put the washers(4) into the nuts(5). Apply a ring of putty on back of the escutcheons(3). Install the escutcheons onto the nuts. Thread the nuts onto the connectors. Tighten the nuts with strap wrench or soft cloth between product and regular wrench. Push the escutcheons until against the finished wall. Remove any excess putty.



How to Install the Handspray and Hose

Remove the guard on the outlet(6).

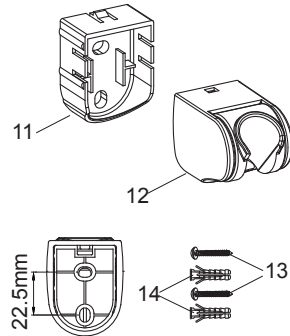
Put the washer(7-1) into end A of the hose(8), and then connect to the faucet outlet(6). Put the washer(7-2) into end B of the hose, and install the restrictor(9) into the handspray(10) inlet if needed, then connect end B of the hose to the handspray inlet.



How to Install the Bracket

Determine a suitable location on the finished wall to install the bracket.

Mark bracket base mounting hole locations on the wall according to the dimension. Drill two holes on the finished wall, the holes should match the anchors(14). Install the anchors. Tighten screws(13) to secure bracket base(11) to the finished wall. Put the bracket(12) onto the bracket base and lock by stopper. Hang the handspray on the shower bracket.



INSTALLATION CHECKOUT

Ensure that all coupling nuts are tightened. Ensure that the handles are in the off position. Turn on the drain and main water supply, and check for leaks. Repair as needed.

Remove the handspray. Remove the aerator. Turn on the faucet. Run hot and cold water through the spout for about one minute to remove any debris. Check for leaks. Remove any debris from the aerator. Shut off the faucet. Reinstall the aerator and the handspray.

CLEANING INSTRUCTIONS

All Finishes: Clean the finish with mild soap and warm water. Wipe entire surface completely dry with clean soft cloth. Many cleaners may contain chemicals, such as ammonia, chlorine, toilet cleaner etc. which could adversely affect the finish and are not recommended for cleaning.

Do not use abrasive cleaners or solvents on Kohler faucets and fittings.