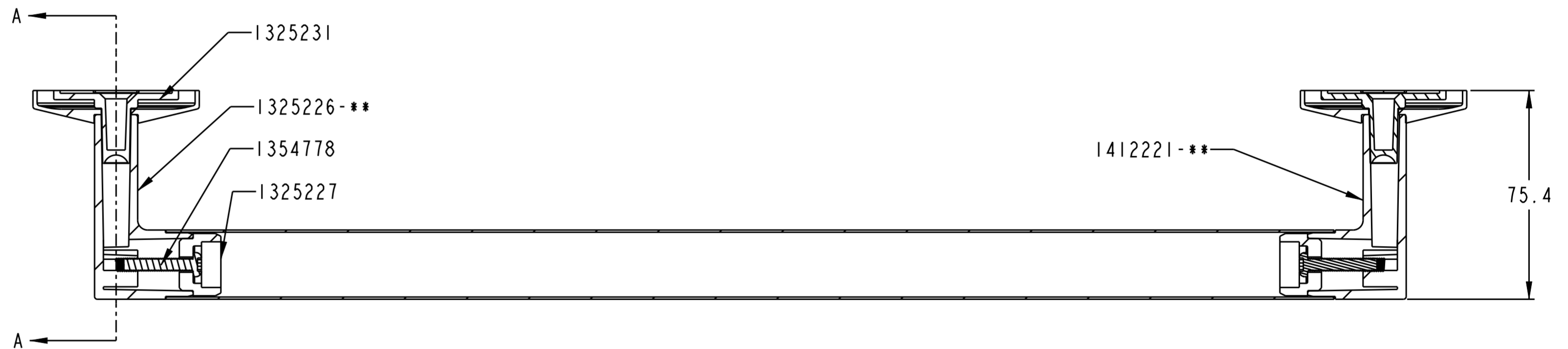


SECTION A-A



SECTION B-B

APPLICABLE STANDARDS:  
 A.H030\_010 (PERFORMANCE SPEC.)  
 B.F100\_200  
 C.F100\_201  
 D.QB/T1560-2017

NOTES:

1. NO BURRS OR SHARP EDGES PERMITTED
2. DELIVERED WITH: 4PCS ANCHOR 1023303 (CI)  
 4PCS SCREW, WALL MOUNT 1014644  
 IPC WRENCH, .095 HEX 1116318 OR 833730(2.5mm)
3. FINISHED PARTS "-\*\*" ARE DEFINED ON THE BOM. (AI)
4. ALTERNATIVE OPTIOANL: 2SETS SCREW KIT 1061576 CAN BE USED TO REPLACE 4PCS 1023303 AND 4PCS 1014644. (BI)

Rev.	Date	Made by	Approv. by	Description	RevLev.
C	02.09.21	WENDY ZHAO	JASON LI	SEE PCI C2100640 (ADD 833730 AS ALTERNATIVE OPTION)	
B	09.08.20	WENDY ZHAO	JASON LI	SEE PCI C2004255 (ADD NOTE 4)	
A	03.16.20	WENDY ZHAO	JASON LI	SEE PCI C2000788(REMOVE "RELEASE FOR SAMPLES")	
-	11.05.19	WENDY ZHAO	JASON LI	SEE PCI CI904379 (Drawing Made)	AA

DWG REVISION RECORD

Scale 0.750	Description COMPONENTS 18" TOWEL BAR	Unspecified general tol: ISO 2768-m From 0.5mm to 6mm: ±0.1mm From 6mm to 30mm: ±0.2mm From 30mm to 120mm: ±0.3mm From 120mm to 400mm: ±0.5mm From 0mm to 10mm: ±1°; From 50mm to 120mm: ±0°20' From 10mm to 50mm: ±30'; From 120mm to 400mm: ±0°10'	PRO-E
Format A2	<b>KOHLER</b> GLOBAL FAUCET - CHINA	Drawing 78372T-**	Rev. C
CONFIDENTIAL - EXCLUSIVE PROPERTY OF KOHLER			1 of 1