

KOHLER®

INSTALLATION INSTRUCTIONS

安装说明书

梅玛 MEMOIRS

Wall-Mount Bath & Shower Faucet

10435T 72661T 挂墙式浴缸花洒龙头

安装之前

所有的资料是按最新出版的产品资料编写而成。科勒公司保留任何时候不经通知即可改变产品特性、包装或产品可供类型的权利。

说明书包括重要的安装、保养及清洁方面的内容，请把这些资料交给用户阅读。

注意事项：

1. 一定要先彻底冲洗供水管以清除管道中的杂质。
2. 切换器正常工作的最小压力为 0.05MPa (0.5bar)。
3. 花洒最高工作压力: 0.5MPa (5 bar)。水压超过 0.5MPa (5 bar) 须安装减压阀。花洒最高工作温度及环境温度: 60°C。请特别注意花洒同花洒连接的臂管须远离浴霸, 否则可能损坏花洒及其密封件, 甚至对使用者造成伤害。

BEFORE YOU BEGIN

All information is based on the latest product information available at the time of publication. Kohler Co. reserves the right to make changes in product characteristics, packaging, or availability at any time without notice.

Please leave these instructions for the consumer. They contain important information.

NOTES:

1. Flush the water supply pipes thoroughly to remove debris.
2. The minimum inlet water pressure for the diverter is 0.05MPa (0.5bar).
3. The highest working pressure for handspray is 0.5MPa (5 bar). If it exceeds 0.5MPa (5 bar), a pressure reducer is needed. The highest water and environment temperature is 60°C. Please keep handspray, shower head and the shower arm away from heater, or it may become damaged and cause injury to the user.

使用说明

对于 10435T-4V, 逆时针旋转右把手为开, 顺时针旋转左把手为开。

对于 10435T-3S, 逆时针旋转两把手为开, 顺时针旋转两把手为关。

HANDLE OPERATION

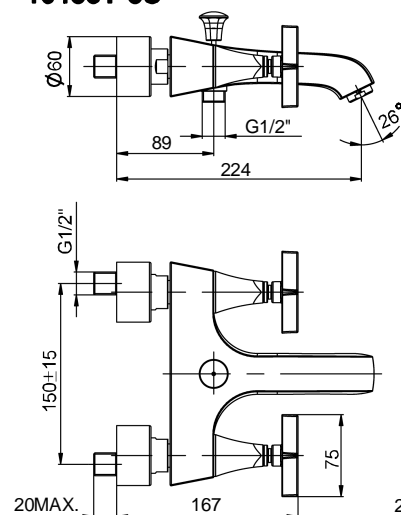
For 10435T-4V, right handle opens with one-quarter turn counter-clockwise, left handle opens with one-quarter turn clockwise.

For 10435T-3S, both handles open with one-quarter turn counter-clockwise and close with one-quarter turn clockwise.

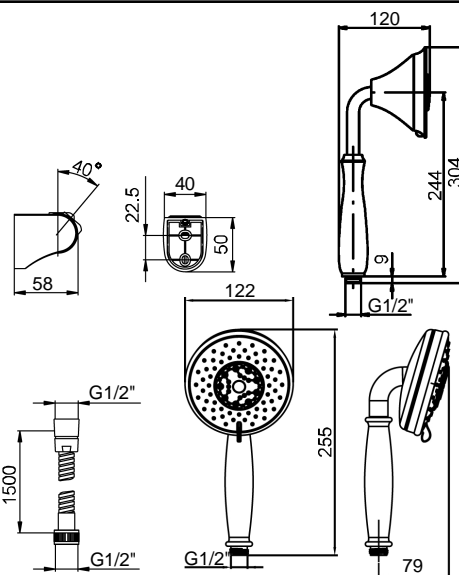
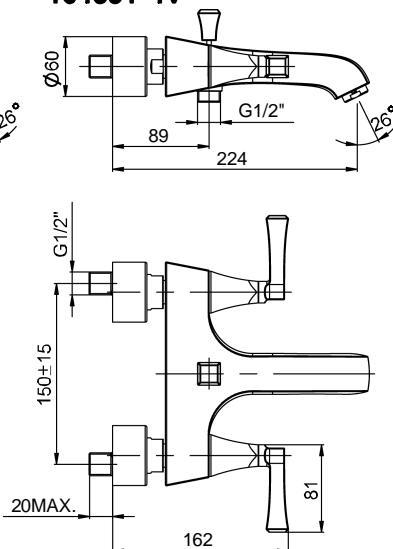
安装尺寸

ROUGH-IN DIMENSIONS

10435T-3S



10435T-4V



安装说明

如何安装水龙头

为使安装顺利, G1/2" 内螺纹管道配件应已安装好。预留 150mm 的间距, 保持水平, 并垂直墙面, 不要凸出墙面。热供水管装在左边。

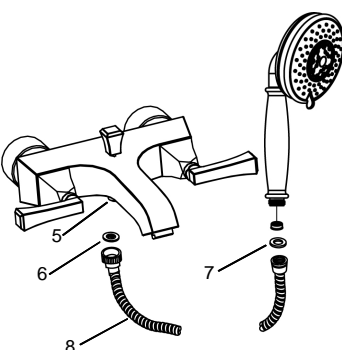
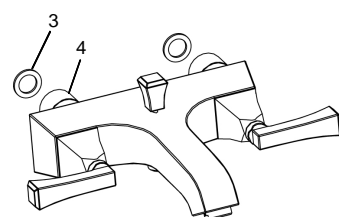
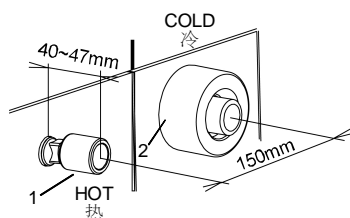
在两个接头(1)涂上螺纹密封膏或缠绕足以密封的密封胶带, 旋入冷热供水管中。

调节两个接头, 使其中心距离为 150mm 并保持同一水平。它们凸出墙面的尺寸应该在 40 到 47mm 之间。将装饰罩(2)旋入接头, 紧贴墙壁。

将垫片(3)放入水龙头螺母(4)中, 将螺母旋到接头上。

在锁紧螺母时, 须用带状扳手或用软布垫在普通扳手和螺母之间, 以保护镀层表面。

将垫片(6)安装在软管(8)与出水口(5)之间。垫片(7)安装在软管(8)与花洒之间。



INSTALLATION

How To Install The Faucet

To perform installation, installer must provide G1/2" female supply fittings, spaced 150mm apart, level, vertical, and not extending beyond finished wall surface. Hot supply pipe must be located on the left.

Install the two offset connectors(1) into the hot and cold supply pipes. Use appropriate thread sealants or thread tape on pipe threads.

Adjust the center-to-center distance between the connectors to 150mm and level. They should extend 40 to 47 mm beyond the finished wall. Thread the escutcheons(2) onto the connectors until they are against the finished wall.

Put the washers(3) into the nuts(4), thread the nuts to connectors.

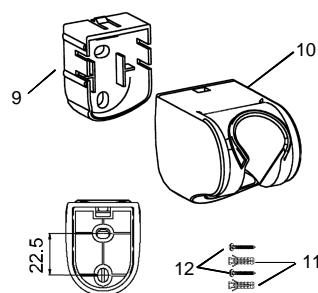
When tighten the nuts, use strap wrench or soft cloth between product and regular wrench to protect the finish.

Put the washer(6) between hose(8) and shower outlet(5). Put the washer(7) between hose(8) and handspray.

如何安装托架

在墙面选一合适的位置来安装托架。

根据孔距在墙面标记位置, 依据胀塞(11)直径打孔, 安装胀塞。旋紧螺钉(12), 使底座(9, 平面朝上)固定紧贴墙壁。将托架(10)扣在底座上, 使凸台嵌入豁口。把花洒挂在托架上。



How To Install The Bracket

Determine a suitable location on the finished wall to install the bracket.

Mark bracket base mounting hole locations on the wall according to the dimension. Drill two holes in the finished wall, the holes should match the anchors(11). Install the anchors. Tighten screws(12) to secure bracket base(9) to the finished wall. Put the bracket(10) onto the bracket base and lock by stopper. Hang the handspray on the shower bracket.

安装结果检查

INSTALLATION CHECKOUT

检查并确保所有的衔接处都已拧紧。

Ensure that all coupling nuts are tight.

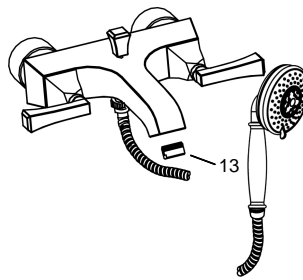
确保手柄在“关”的位置。

Ensure that the handles are in the off position.

打开排水系统和主要供水源,检查并修理有漏水的接口。

Turn on the main water supply, and check for leaks. Repair as needed.

取下花洒和起泡器(13)。打开冷热水,让水流出约一分钟以清除杂质。检查渗漏。清洗起泡器。关闭水龙头,并装回起泡器和花洒。



Remove the handspray and the aerator(13). Run hot and cold water through the faucet for about one minute to remove any debris. Check for leaks. Remove any debris from the aerator. Shut the faucet off, and reinstall the aerator and handspray.

清理说明

CLEANING INSTRUCTIONS

适用于所有加工处理过的表面:以中性肥皂水清洗镀层表面,再以干净的软布彻底擦干整个表面,许多清洁剂,比如氨水、去污粉及洁厕灵等,会对电镀表面造成伤害,切忌使用。

All Finishes: Clean the finish with a mild soap and warm water. Wipe entire surface completely dry with clean soft cloth. Many cleaners may contain chemicals, such as ammonia, chlorine, toilet cleaner etc. which could adversely affect the finish and are not recommended for cleaning.

有磨损性的清洁用具或清洁剂也不可适用于科勒牌的水龙头及其配件上。

Do not use abrasive cleaners or solvents on Kohler faucets and fittings.

KOHLER®

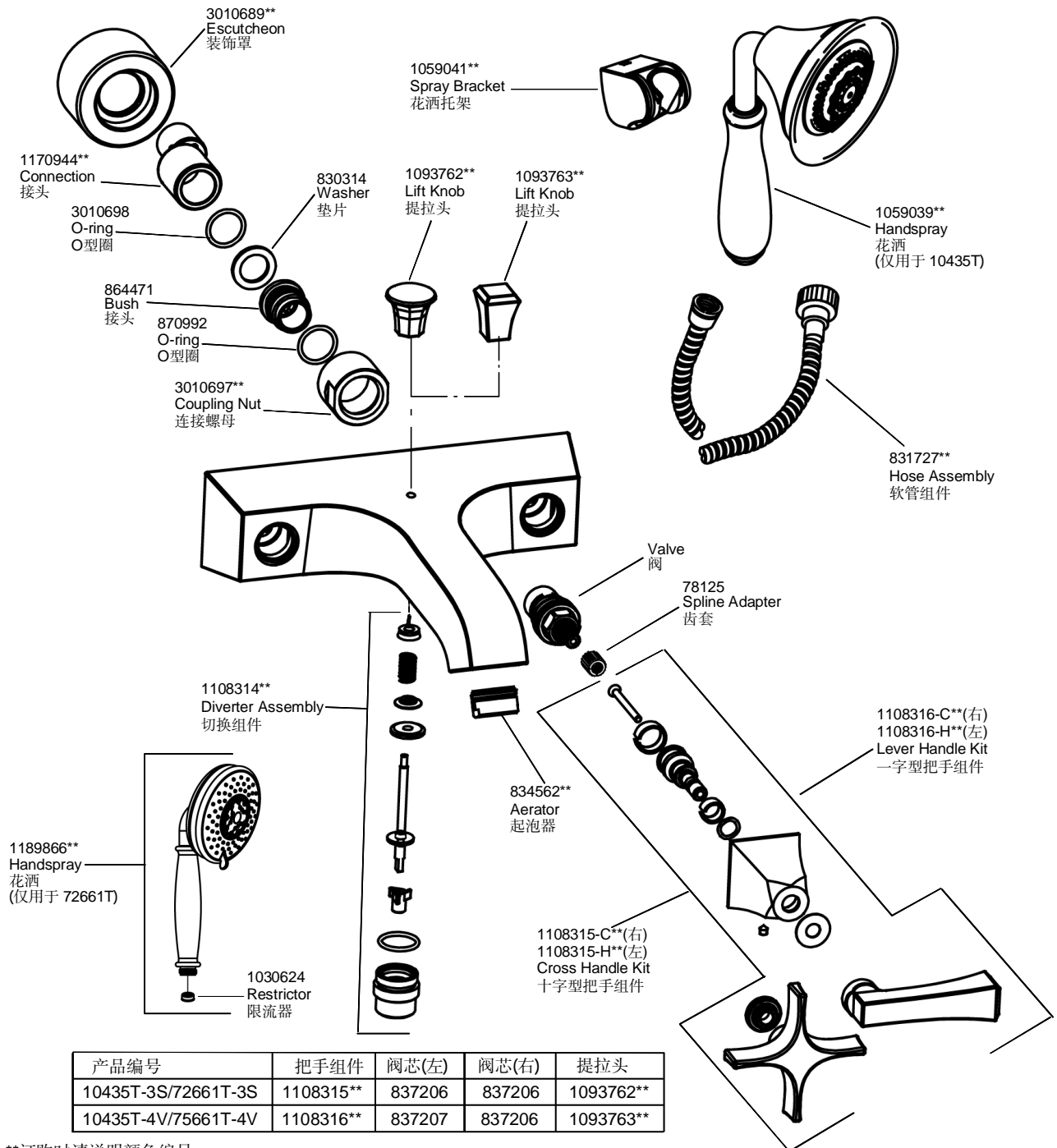
SERVICE PARTS

零件图

梅玛 MEMOIRS

Wall-Mount Bath & Shower Faucet

10435T 72661T 挂墙式浴缸花洒龙头



**订购时请说明颜色编号

**Color code must be specified when ordering.