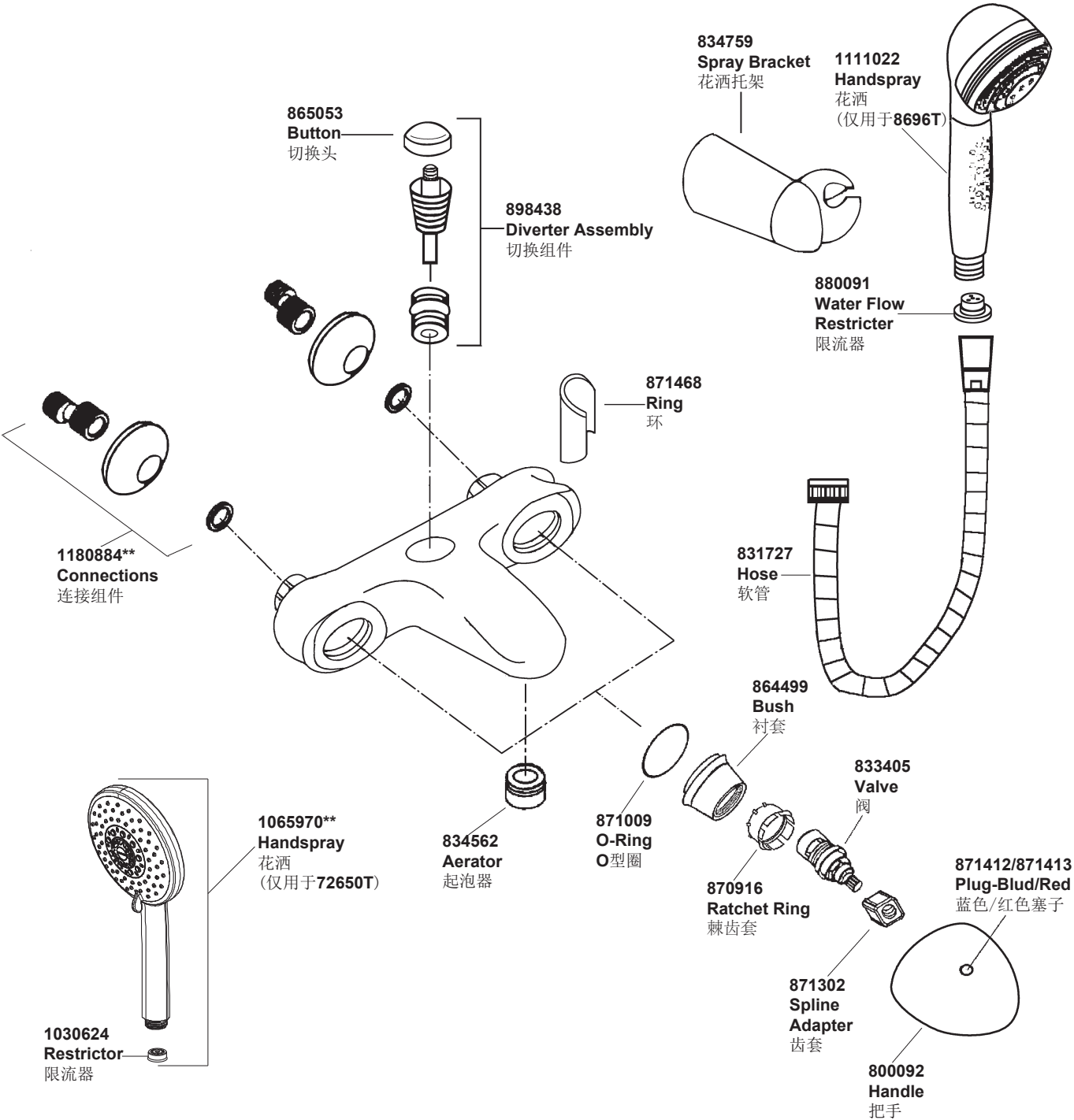


8696T 72650T 挂墙式浴缸花洒龙头



**订购时请说明颜色编号
**Color code must be specified when ordering

8696T 72650T 挂墙式浴缸花洒龙头

安装之前

所有的资料是按最新出版的产品资料编写而成。科勒公司保留任何时候不经通知即可改变产品特性、包装或产品可供类型的权利。

说明书包括重要的安装、保养及清洁方面的内容，请把这些资料交给用户阅读。

注意事项：

1. 切断供水管路。
2. 检查供水管有无损坏。如需要，进行替换。
3. 遵守当地管路安装条例。
4. 尽可能在安装浴缸之前安装水龙头。
5. 切换器正常工作的最小压力为0.05MPa(0.5bar)。
6. 花洒最高工作压力：0.5MPa(5bar)。水压超过0.5MPa(5bar)须安装减压阀。花洒最高工作温度及环境温度：60°C。请特别注意花洒同花洒连接的臂管须远离浴霸，否则可能损坏花洒及其密封件，甚至对使用者造成伤害。

BEFORE YOU BEGIN

All information is based on the latest product information available at the time of publication. Kohler Co. reserves the right to make changes in product characteristics, packaging, or availability at any time without notice. Please leave these instructions for the consumer. They contain important information.

NOTES:

1. Shut off the water supplies to the fitting.
2. Inspect the supply tubing for damage. Replace as necessary.
3. Observe local plumbing codes.
4. If possible, install the lavatory before installing the bathtub .
5. The minimum inlet water pressure for the diverter is 0.05MPa(0.5bar).
6. The highest working pressure for handspray is 0.5MPa(5bar). If it exceeds 0.5MPa(5bar), a pressure reducer is needed. The highest water and environment temperature is 60°C. Please keep handspray, showerhead and the shower arm away from heater, or it may become damaged and cause injury to the user.

使用说明

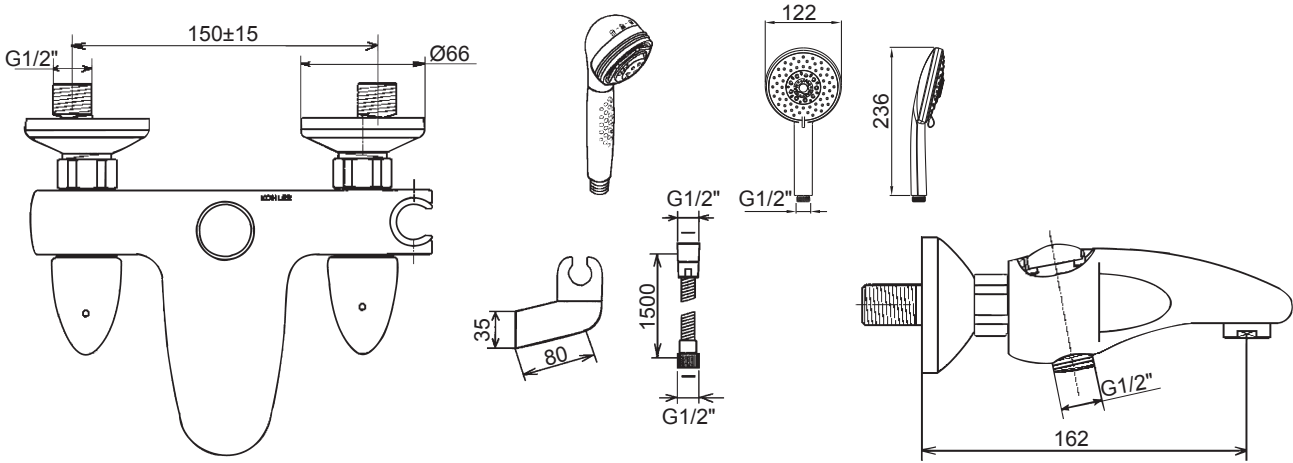
逆时针旋转两把手为开，顺时针旋转两把手为关。

HANDLE OPERATION

Both handles open with turning counterclockwise and close with turning clockwise.

安装尺寸

ROUGH-IN DIMENSIONS



安装步骤	INSTALLATION
<h3>如何安装水龙头</h3> <p>为使安装顺利，G1/2"内螺纹管道配件(1)应已安装好，预留150mm的间距，保持水平，不要凸出墙面。</p> <p>彻底冲洗供水管，以清除管路中的杂质。</p> <p>使用适合的螺纹密封膏，安装两个接头(2)到冷热供水管中。</p> <p>保持两个接头中心到中心的距离150mm，并调整到同一水平线上。把装饰罩(3)旋入接头，紧贴墙壁。</p>	<h3>How To Install The Faucet</h3> <p>To perform installation, installer must provide G1/2" female supply fittings(1), spaced 150mm apart, level and not extend beyond finished wall surface.</p> <p>Flush the water supply pipes thoroughly to remove debris.</p> <p>Install the two offset connectors(2) into the HOT and COLD supply pipes. Use appropriate thread sealants on pipe threads.</p> <p>Adjust the center-to-center distance between the connectors to 150mm and level. Thread the trim caps(3) onto the connectors so that the trim cap contact the finished wall.</p>
<p>把密封垫片(8)放入水龙头的螺母内。把螺母(7)穿过接头，并拧紧。</p> <p>将垫片安装在出水口(6)与软管(5)间。将限流器塞入花洒(4)进水口，垫片安装在花洒与软管之间。然后锁紧衔接螺母。</p>	<p>Put the washers(8) into supply nuts of the faucet. Thread the faucet supply nuts(7) onto the connectors and tighten.</p> <p>Provide the washer between the hose (5) and the shower outlet(6). Put the flow restrictor into the handspray(4) inlet. Provide washer between the hose and handspray. Tighten all the connections.</p>
<h3>如何安装托架</h3> <p>在垂直面的墙壁，选一合适的高度，来安装托架。</p> <p>把托架盖子(10)与底板(9)撬开。</p> <p>在墙壁上标上安装托架底板位置的记号。</p> <p>在墙上钻两个洞，以便安装螺钉和铰钉。</p> <p>旋紧螺钉，使托架固定紧贴墙壁。</p> <p>用托架盖子盖住底板。把花洒挂在托架上。</p>	<h3>How To Install The Bracket</h3> <p>Select a location on vertical wall within reach of the shower hose to install shower bracket.</p> <p>Pry between the bracket cover(10) and base(9) to separate the two parts.</p> <p>Mark bracket base mounting hole locations on wall as shown.</p> <p>Drill two holes in the finished wall as required, for the installation anchors and screws.</p> <p>Tighten screws to secure bracket base to the finished wall.</p> <p>Replace bracket cover onto bracket base. Hang the handspray on the shower bracket.</p>

安装结果检查	INSTALLATION CHECKOUT
<div>检查并确保所有的衔接处都已拧紧。</div> <div>确保手柄在“关”的位置。</div> <div>开启主供水源，检查是否有漏水。如有漏水，修理之。</div> <div>取下起泡器(11)和花洒(4)。把冷热水都打开，让水流出约一分钟以清除杂质。检查渗漏。清洗起泡器。关闭水龙头，并装回起泡器组件和花洒。</div>	<div>Ensure that all coupling nuts are tight.</div> <div>Ensure that the lever handle is in the down position.</div> <div>Turn on the main water supply, and check for leaks. Repair as needed.</div> <div>Remove the aerator(11) and handspray (4). Run hot and cold water through the faucet for about one minute to remove any debris. Check for leaks. Remove any debris from the aerator assembly. Shut the faucet off. Reinstall the aerator assembly and handspray.</div>
<div>清理说明</div> <div>适用于所有加工处理过的表面：以中性肥皂水清洗镀层表面，再以干净的软布彻底擦干整个表面，许多清洁剂，比如氨水、去污粉及洁厕灵等，会对电镀表面造成伤害，切忌使用。</div> <div>有磨损性的清洁用具或清洁剂也不可使用于科勒牌的水龙头及其配件上。</div>	<div>CLEANING INSTRUCTIONS</div> <div>All Finishes: Clean the finish with mild soap and warm water. Wipe entire surface completely dry with clean soft cloth. Many cleaners may contain chemicals, such as ammonia, chlorine, toilet cleaner etc. which could adversely affect the finish and are not recommended for cleaning.</div> <div>Do not use abrasive cleaners or solvents on Kohler faucets and fittings.</div>