

KOHLER®

K-2886-1/8  
意丽思 ELLIPSE™

铸铁修边台上脸盆  
CAST IRON SELF-RIMMING LAVATORY  
切割图/安装说明书  
CUT-OUT TEMPLATE / INSTALLATION INSTRUCTIONS

BEFORE YOU BEGIN

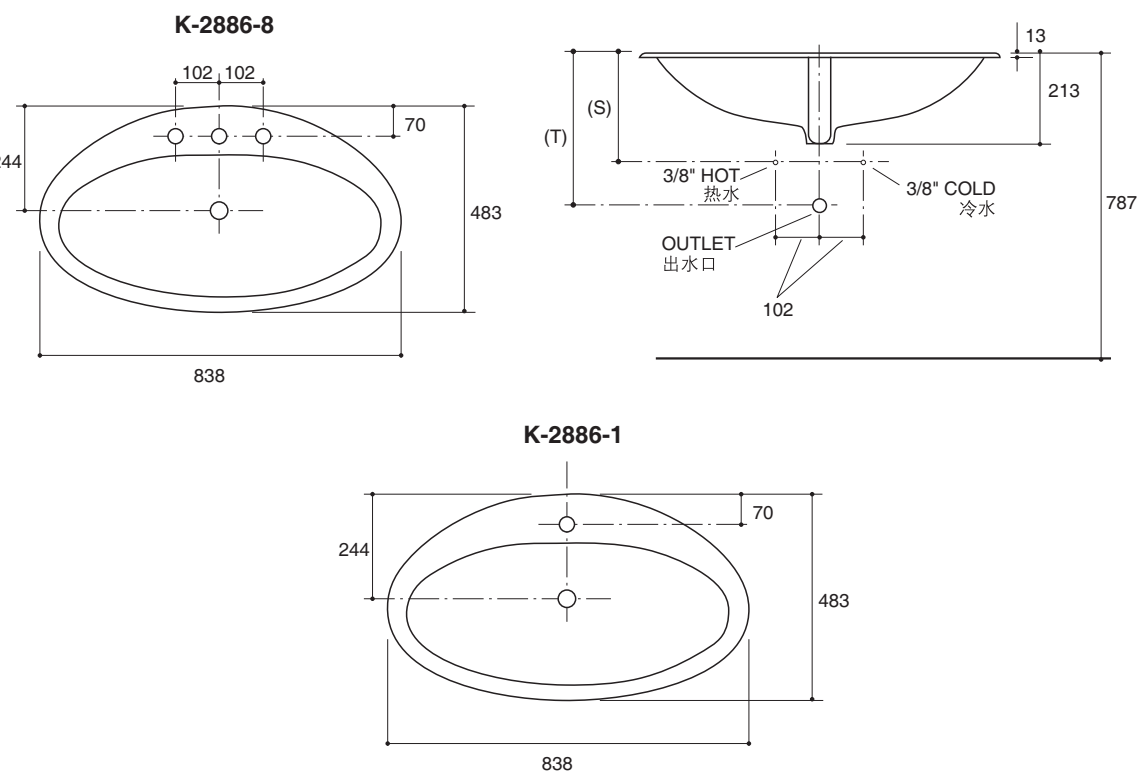
NOTE

- Observe all local plumbing and building codes.
- Inspect the waste and supply tubing; replace if necessary.
- Prior to installation, unpack the new lavatory and carefully inspect it for damage. Return the lavatory to its protective carton until you are ready to install it.
- For replacement installations, make sure the existing cutout is the same or smaller size as the new lavatory.
- Use the template supplied with the lavatory to mark correct size cutout.
- Do not substitute another sealant if one is supplied with this lavatory.

TOOLS AND MATERIALS  
REQUIRED

- Template (supplied)
- Sealant (may be supplied with some models)
- Safety glasses
- Pencil
- Scissors
- Tape measure
- Putty knife
- Plumbers putty
- Hacksaw
- Keyhole saw or saber saw
- Drill (13mm or 1/2" dia. drill bit or larger)
- Adjustable wrench
- Pipe wrench

ROUGHING-IN



(T) 使用提拉杆去水头356mm。  
(S) 254mm: 此尺寸根据305mm胃口计算。须按实际情况调整。

安装之前

注意

- 留意当地所有给排水及建筑规定。
- 检查污水管及供水管，如有需要请更换。
- 安装之前，先开启新脸盆的包装，并小心检验新的脸盆是否有损坏，再将脸盆放回包装盒内，到安装时才取用。
- 若为更换新脸盆，须确保现有的柜台孔口与新脸盆的切割位相同或较后者小。
- 请使用同时印在此说明书上的切割图，标划正确之切割位。
- 如果脸盆已随附封边胶，请勿使用其它封边胶。

所需工具及材料

- 安装模板（已提供）
- 封边胶（视型号提供）
- 护眼镜
- 炭笔
- 卷尺
- 涂油灰刀
- 水管用油灰
- 钢锯
- 匙孔线锯或手提电锯
- 钻（直径13mm钻头或更大）
- 活动板钳
- 喉管板钳
- 切管刀

尺寸图

单位: 毫米  
Unit: mm

REMOVE EXISTING  
LAVATORY

- Turn off the water supply to the faucet.
- Open the faucet valves, then disconnect the supply lines.
- Disconnect the drain assembly, and remove the trap.
- Remove the existing lavatory.

INSTALL NEW  
LAVATORY

- Cut the template on the cutout line.
- Position the template on the countertop to ensure clearance between the lavatory, faucet, and backsplash.
- Verify cabinet clearance beneath the countertop.

**NOTE:** In china installation will not have separate backsplash. The back wall is the "backsplash".

- Trace the template on the countertop with a pencil.
- Re-check the clearance between the lavatory, faucet, backsplash or wall, and cabinet. Adjust the template accordingly.

- Drill a 13mm hole on the inside of the cutout opening.
- Cut the opening in the countertop along the inside edge of the pencil line.

- Temporarily position the lavatory in the opening, and adjust to fit.

**CAUTION: Risk of personal injury or product damage.** Large lavatories are very heavy. Get help lifting the lavatory into place.

- Trace a pencil line around the outside edge of the lavatory.
- Remove the lavatory.
- Install the faucet and drain according to the manufacturer's instructions.

拆除旧脸盆

- 关掉水龙头的供水源。
- 打开水龙头阀门，然后断开供水管。
- 再旋开排水装置，并拿开弯管。
- 移走旧脸盆。

安装新脸盆

- 将切割图沿切割线切出。
- 将切割图放在盥洗台上，确保脸盆、水龙头和防溅挡板之间有足够距离。
- 查核盥洗台下的储物柜也有足够的空间。

注意：在中国一般会单独安装防溅水板，安装台盆的后墙即是“防溅水板”。

- 用炭笔没切割图在盥洗台面划线。
- 再次检查脸盆、水龙头、防溅水板或后墙及储物柜的空间及距离，如有需要可调校切割图的位置。

- 用一个13mm的钻头，在切割口内侧钻一个导孔。
- 沿著自切割图色勾划出来的铅笔线内侧切开台面。

- 暂将脸盆放入台面开口，校正位置。

**小心：**提防身体受伤或损坏产品，因大型脸盆相当重，需找人帮您一起搬动及安放。

- 用炭笔沿脸盆外缘在盥洗台上划线。
- 然后将脸盆移开。
- 按照制造商的指引，安装水龙头和排水管道，沿炭笔导线内侧涂两串封边胶。

- Apply two beads of sealant to the inside of the pencil line.

**NOTE:** Do not substitute another sealant if one is supplied with this lavatory.

- Spread the sealant evenly with a putty knife.

- Carefully position the lavatory in the cutout, and press down firmly.

**CAUTION: Risk of personal injury or product damage.** Large lavatories are very heavy. Get help lifting the lavatory into place.

- Immediately wipe away any excess sealant, and fill any voids as needed.
- Verify that the lavatory has not moved out of position.
- Allow the sealant to cure for at least 30minutes before proceeding.
- Connect the faucet supply lines.
- Connect the drain assembly.
- Open the faucet valves, and check for leakage.
- Clean up with a non-abrasive cleaner.

CARE AND CLEANING

To keep your lavatory looking new, make sure you rinse it out thoroughly after each use. **DO NOT ABRASIVES** on this product, as they will scratch and ruin the surface. Stubborn stains, paint, or tar can be removed with turpentine or paint thinner.

护理及清洁须知

为保持脸盆光洁如新，须确保每次使用后彻底冲洗干净。切勿使用腐蚀性的清洁剂，以免刮花及破坏脸盆的表面。要清除顽固污垢，油漆或柏油，可使用松油或油漆稀释剂。

当在台面上一比一描绘切割线时，务必确保模板的水平和竖直尺寸与模板上标注的一致。

WHEN PLOTTING TEMPLATE FULL SIZE:  
Make sure horizontal and vertical dimensions match the dimensions labeled on the template.

沿此线切割  
CUT ALONG THIS LINE

台盆边缘  
RIM OF LAVATORY

1139485-T01-A

上海科勒有限公司  
上海市奉贤区民乐路368号 邮编: 201419

© 版权为科勒中国有限公司所有, 2009  
© Copyright Kohler China Ltd., 2009