

## K-2186T-1/-4/-8 FLEUR 芬乐尔

## VITREOUS CHINA SEMI-RECESSED LAVATORY 釉面陶瓷嵌入式台上脸盆 CUT-OUT TEMPLATE / INSTALLATION INSTRUCTION 切割图/安装说明书

### IMPORTANT

- Measure location of drain line in the wall from floor to determine if adequate clearance can be provided for barrier free installation. See Rough-in.
- For replacement installation, make sure existing cutout is the same or smaller size than the lavatory.

### BEFORE YOU BEGIN

- Begin you remove your old fixture, unpack the new lavatory and carefully inspect it for any damage that may have occurred. Vitreous china may chip and you do not want to discover damage after the unit has been installed. Until you are ready to begin installation, place the lavatory back in the original packing carton to prevent damage.
- Also make sure you have complete original template to aid you in cutting out your counter top. Kohler self-rimming lavatories cannot be installed without a template.
- Observe all local plumbing codes.
- Kohler lavatory is made according to American National Standard that can match the American lavatory fittings. Any other lavatory fittings may not fit for Kohler lavatory.
- Fixture dimensions are nominal and conform to tolerances established by ASME Standards (A112.19.2-2013).
- The product complies with GB 6952-2015.

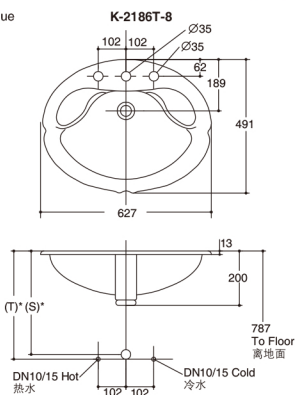
### TOOLS AND MATERIALS

#### (Not Supplied)

- Putty knife
- Adjustable wrench
- Saber or keyhole saw
- Pipe wrench
- Tubing cutter
- Screwdriver
- Hacksaw
- Ruler
- Pencil
- Drill
- 13mm drill bit
- Safety glasses
- Scissors
- Sealant
- Plumber s putty
- New faucet (optional)
- Shut-off valves (optional)

### ROUGH-IN

Reference Value  
参考值



\* Nominal dimensions only; May change due to p-trap, faucet or angle-supplies used.  
\* 尺寸仅供参考, 可能会因P弯、龙头、角阀及供水管而改变。

### 重要

- 量度由地面到墙内排水管的位置, 确保有足够空间, 使安装时无障碍。请参阅尺寸图。
- 若为更换脸盆工程, 必须先确保现有的切割位等于或小于新脸盆之尺寸。

### 安装之前

- 在你拆除旧装备之前, 先开启新脸盆的包装, 并小心检查新的脸盆是否有任何损坏的迹象。釉面陶瓷可能会破碎。你也不想在安装后才发现有损坏的情况。检查后先将脸盆放回包装盒内, 到安装时才取出, 以防止损坏。
- 必须确保已有原装切割图助你切割盥洗台, 因为要安装科勒嵌入式脸盆, 没有切割图是不行的。
- 请遵守当地所有给排水规定。
- 科勒脸盆是根据美国标准制造的, 与美式洗脸盆配件相配。其它洗脸盆配件可能与之不相配。
- 部件尺寸为标定值, 误差符合美国 ASME 标准 (A112.19.2-2013)。
- 本产品符合 GB 6952-2015。

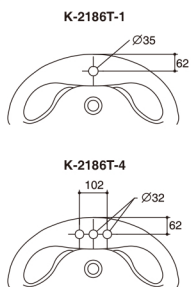
### 所需工具及物料

#### (不随货供应)

- 涂油灰刀
- 活动扳钳
- 手提电锯或匙孔线锯
- 喉管扳钳
- 切管刀
- 螺丝刀
- 钢锯
- 尺
- 铅笔
- 钻
- 13mm 钻头
- 护眼镜
- 剪刀
- 密封胶
- 渠务油灰
- 新龙头(如有需要)
- 止水阀(如有需要)

### 尺寸图

Unit: mm  
单位: 毫米

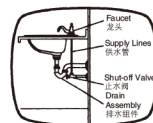


(T)	Pop-up dimensions typically 343mm. Drain typically 299mm.
(S)	Single hole (254mm), 4" centers (254mm), 8" centers (356mm); based on use of 305mm riser which may require cutting.

(T)	凸出排水管一般为343mm, 排水管则为299mm.
(S)	单孔(254mm), 4寸中心距(254mm), 8寸中心距 (356mm); 根据305mm管口而定, 可能需切短。

Kohler reserves the right to change marked dimensions without prior notice.  
科勒公司保留随时变更图中标示尺寸的权利, 无需另行通知。

- To remove old lavatory: Turn off water supply by closing the two shut-off valves below the lavatory. If there are no shut-off valves, turn off water at meter. Turn the lavatory faucet on to drain the supply lines. Disconnect and remove water supply tubes from faucet. Disconnect drain assembly and remove trap.



- Use the scissors to cut out the template on the specified line shown on template.
- Trace the template on the counter top using a soft lead pencil.



- When cutting into a new counter top, drill a pilot hole using a 13mm drill. Use a saber or keyhole saw to cut out the opening in the counter top by carefully following the pencil line traced from the template.
- Temporarily place lavatory into the opening and adjust for exact position. Trace a pencil line around the outside edge of the lavatory. This will serve as a guide line for applying sealant. Remove fixture from counter top.



- Assemble faucet and drain to lavatory following the manufacture s instructions.



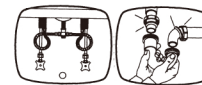
- Apply one ribbon of adhesive sealant on the counter top between the edge of the opening and the guide line that was traced on the outside of the fixture. Spread evenly with a putty knife.



- Carefully place the lavatory into the opening in counter top and press down firmly. Use guide line to position properly.



- Immediately remove excess adhesive sealant with a damp cloth. Fill any voids in the joint where necessary.
- Allow adhesive sealant to set 30 minutes before connecting supplies and drain.



- Connect supply lines at supply valves and fitting. Be careful not to move the fixture out of position.
- Connect drain lines and trap at fixture and wall outlet. Turn tailpiece into drain body. Align trap inlet with tailpiece. Place trap nut and gasket onto tailpiece and insert into trap. Tailpiece must extend 25 to 50mm into trap. Tailpiece may have to be cut to fit.



- Turn water supplies on and check for leaks at supply and drain connection.



- CLEAN UP: When cleaning up after installation, DO NOT USE ABRASIVE CLEANERS as they may scratch and dull the unit surface. Use warm water and a liquid non-abrasive detergent to clean the surface. Stubborn stains, paint, or tar can be removed with turpentine or paint thinner.

- 移除旧脸盆: 关掉脸盆下的两个止水阀即可关掉水源。若无止水阀, 可关掉水表。打开龙头, 让留在供水管的水全流出来, 然后拆开供水管, 使之与水龙头分离。再拆开排水装置, 并拿开存水弯管。

- 使用剪刀将切割图沿线切出。
- 用铅笔沿模块在台面划线。

注: 切割图上有中心线划开口定位正确。

- 若切割新的盥洗台, 先用一个13mm的钻头钻一个导孔, 然后用电锯或匙孔线锯小心沿着按切割图勾划出来的铅笔线切开台面。

- 暂将脸盆放入台面开口内放正, 固定后用铅笔沿脸盆外缘在盥洗台上划线。此线乃用来确定使用封边胶的范围。然后将脸盆移开。

- 按照制造商的指引, 装上台龙头和排水管道。

- 在台面切割口和脸盆外沿的导线之间, 涂上一行密封胶, 并用涂油灰刀将其抹匀。

注意: 使用密封胶时动作要快, 因其在数分钟之内凝固。

- 然后按划线的位置小心地将脸盆置于台面切口适当位置, 按下脸盆, 固定位置。

- 立刻用湿布擦去多余的密封胶。如有缝隙即用胶填塞。

- 待密封胶风干三十分, 然后联接供水和排水管道。

- 供水阀上装上供水管及配件, 联接时切勿移动脸盆。

- 联接排水管道和存水弯管于脸盆及墙上出水口时, 将下水尾管插入排水口, 让排水管与尾管成一直线, 套上存水弯管螺母和密封胶圈, 再装上存水弯管。下水尾管须插入存水弯管25至50mm, 如太长应切掉。

- 打开供水管, 检查所有供水及排水联接处有无渗漏。

- 清理: 安装后进行清理时, 切勿用腐蚀性清洁剂, 以免刮花或导致盆面哑暗。可用暖水及液态非腐蚀性清洁剂清洁表面。如有顽迹、油漆或污点, 可用松油或油漆稀释剂清洗。