

BEFORE YOU BEGIN

Thank you. You have just purchased the best bath drain your money can buy. Kohler drains work smoothly and reliably, and keep their gleaming finishes. For easy installation, follow these step-by-step instructions.

Carefully read these instructions before you attempt to remove your old drain or install your new one. Make sure you have the proper tools and materials listed on the following page to complete the job. This will help you avoid unnecessary expense resulting from improper installation.

Your new Kohler drain has been designed for easy installation using common household tools.

安装之前

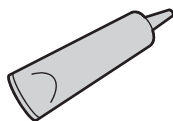
感谢您购买品质卓越的浴缸排水。科勒排水工作通畅、可靠，光洁持久。请遵循以下安装步骤，完成便捷安装。

在拆除旧排水准备安装新排水时请仔细阅读以下说明。请使用以下列出的工具和材料完成安装，以免安装失误造成不必要的损失。

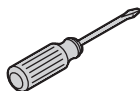
只要使用普通家用工具即可安装科勒浴缸排水。

Tools Required

所需工具



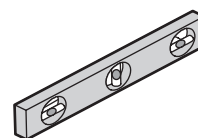
Sealant
硅胶



Blade Screwdriver
一字螺丝刀



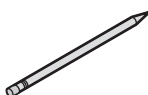
Phillips Screwdriver
十字螺丝刀



Square
水平尺



Pliers
老虎钳



Pencil
铅笔



Tape Measure
卷尺

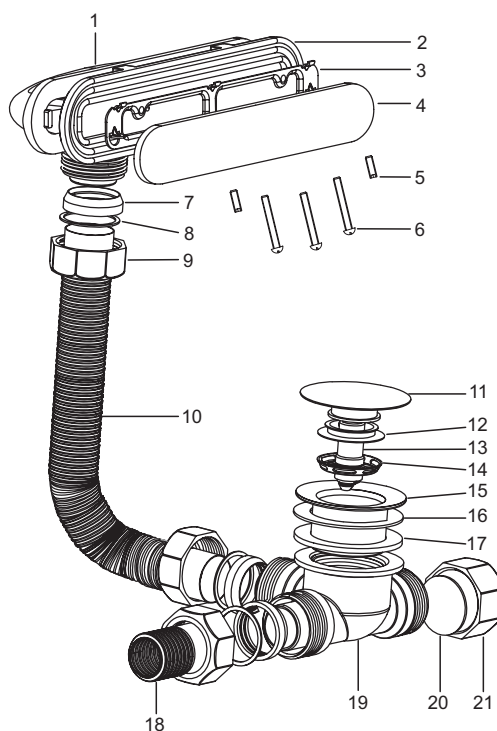


Safety Glasses
防护眼镜

PARTS IDENTIFICATION

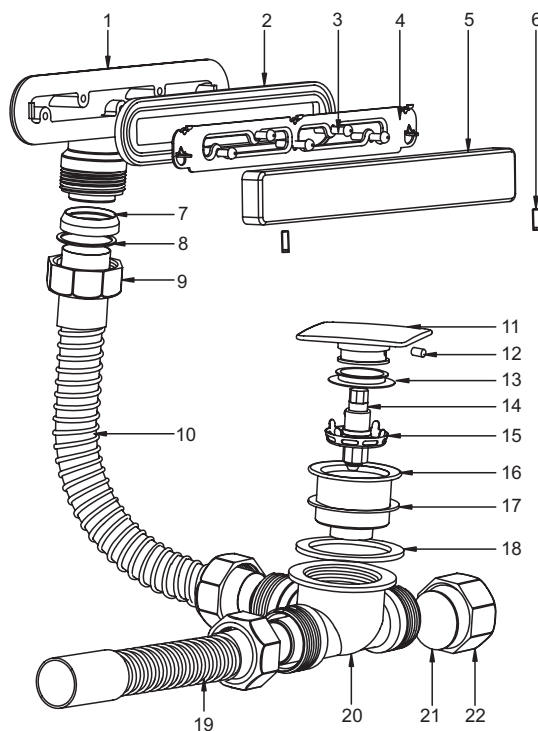
零件识别

- | | |
|------------|--------------------------|
| 1. 溢水座 | Overflow Body |
| 2. 溢水座密封圈 | Seal, Overflow Body |
| 3. 支架 | Overflow Mounting Plate |
| 4. 溢水盖 | Overflow Cover |
| 5. 固定螺钉 | Set Screw |
| 6. 螺丝 | Screw |
| 7. 接头密封圈 | Connection Seal |
| 8. 接头垫圈 | Connection Gasket |
| 9. 1-1/4螺母 | 1-1/4 Nut |
| 10. 溢水软管 | Overflow Flexible Pipe |
| 11. 止水塞 | Plug |
| 12. 止水塞密封圈 | Seal, Plug |
| 13. 阀芯组件 | Valve Assy. |
| 14. 滤网 | Screen |
| 15. 水漏 | Strainer |
| 16. 水漏垫圈 | Strainer Gasket |
| 17. 排水座垫圈 | Drain Body Gasket |
| 18. 排水座软管 | Drain Body Flexible Pipe |
| 19. 排水座 | Drain Body |
| 20. 垫圈 | Gasket |
| 21. 塑料头 | Plastic Cover |



K-18355T, K-10164T, K-98171T

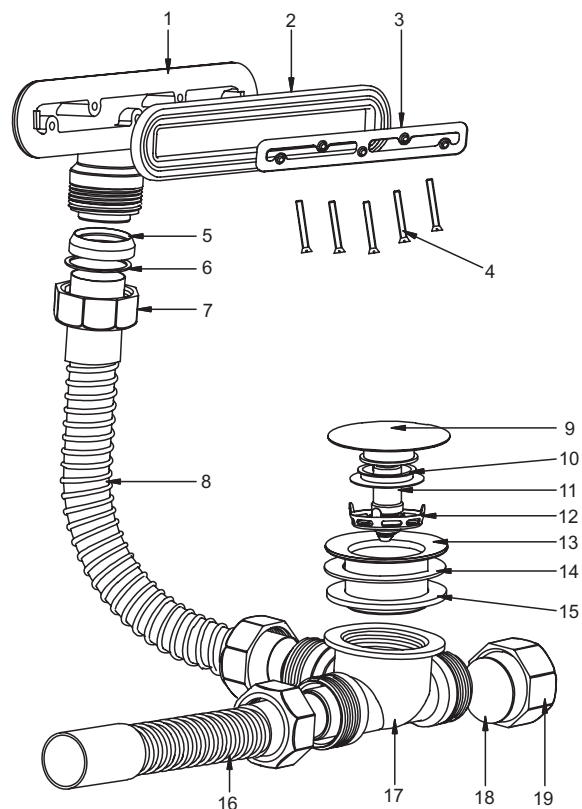
- | | |
|------------|--------------------------|
| 1. 溢水座 | Overflow Body |
| 2. 溢水座密封圈 | Seal, Overflow Body |
| 3. 螺丝 | Screw |
| 4. 支架 | Overflow Mounting Plate |
| 5. 溢水盖 | Overflow Cover |
| 6. 固定螺钉 | Set Screw |
| 7. 接头密封圈 | Connection Seal |
| 8. 接头垫圈 | Connection Gasket |
| 9. 1-1/4螺母 | 1-1/4 Nut |
| 10. 溢水软管 | Overflow Flexible Pipe |
| 11. 止水塞 | Plug |
| 12. 固定螺钉 | Set Screw |
| 13. 止水塞密封圈 | Seal, Plug |
| 14. 阀芯组件 | Valve Assy. |
| 15. 滤网 | Screen |
| 16. 水漏 | Strainer |
| 17. 水漏垫圈 | Strainer Gasket |
| 18. 排水座垫圈 | Drain Body Gasket |
| 19. 排水座软管 | Drain Body Flexible Pipe |
| 20. 排水座 | Drain Body |
| 21. 垫圈 | Gasket |
| 22. 塑料头 | Plastic Cover |



K-17758T

1. 溢水头组件
2. 溢水头橡胶垫
3. 支架
4. 平头十字螺钉
5. 全塑去螺母密封圈
6. 全塑去水塑料垫片
7. 全塑去水G1-1/4螺母
8. 塑料波纹管
9. 排水栓堵头
10. 密封圈
11. 阀芯组件
12. 滤网
13. 水漏
14. 硅胶垫圈
15. 全塑去水橡胶密封圈
16. 塑料波纹管
17. 塑料排水座
18. 垫片
19. 塑料闷盖

- Overflow Body
- Seal, Overflow Body
- Overflow Mounting Plate
- Screw
- Joint Gasket
- Connection Gasket
- 1-1/4 Nut
- Overflow Flexible Pipe
- Plug
- Seal Plug
- Valve Assy.
- Screen
- Strainer
- Gasket, Thin, Drain
- Gasket, Thick, Drain
- Drain Body Flexible Pipe
- Drain Body
- Gasket
- Plastic Cover

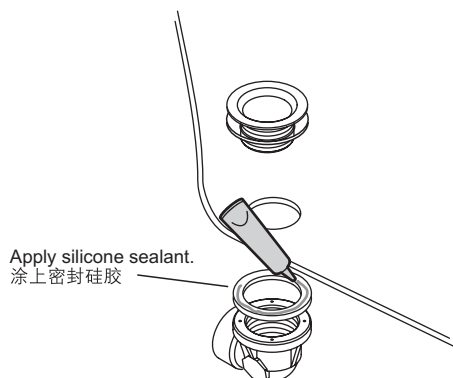


K-45606T

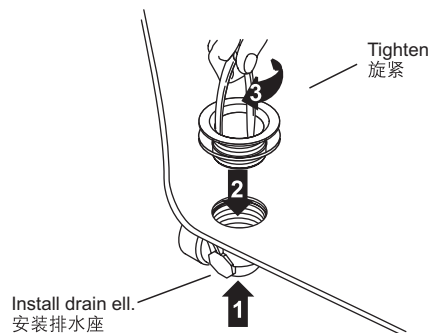
INSTALLATION

安装

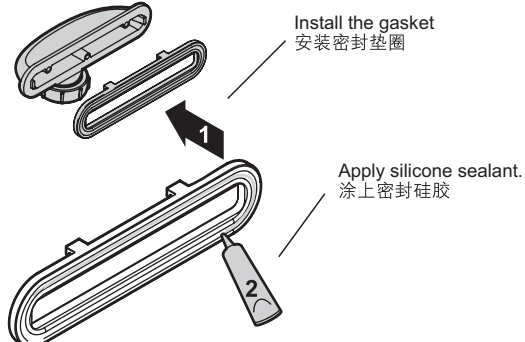
1.



2.

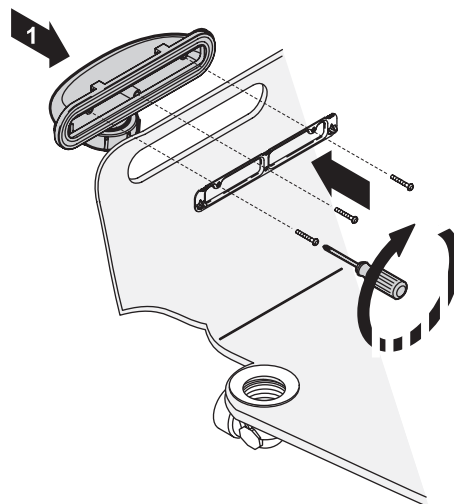


3.



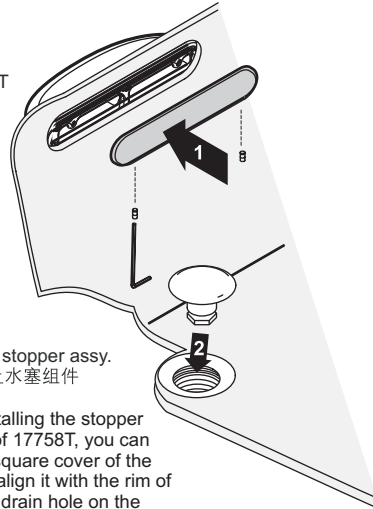
4. Attach the overflow mounting plate.

安装溢水盖支架。



5.

Attach the Overflow Cover
安装溢水盖
No Overflow Cover for K-45606T
K-45606T无溢水盖



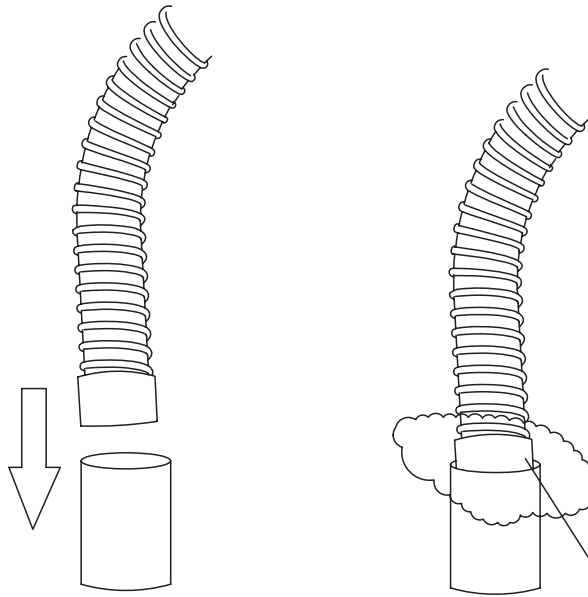
Install stopper assy.
安装止水塞组件

NOTE: When installing the stopper assembly of 17758T, you can rotate the square cover of the strainer to align it with the rim of the square drain hole on the bathtub.

注意：安装17758T止水塞组件时方形止水塞和浴缸方孔要对齐。您可以旋动水漏来微调止水塞方向。

6. Insert the flex pipe into the outlet pipe of the room.

将排水软管的尾端插入房间排水管内。



Apply silicone sealant at the joint of pipes to avoid the humidity come out.

在软管同排水管结合处涂满硅胶，以避免管道内潮气通过此处外逸。

CARE AND CLEANING

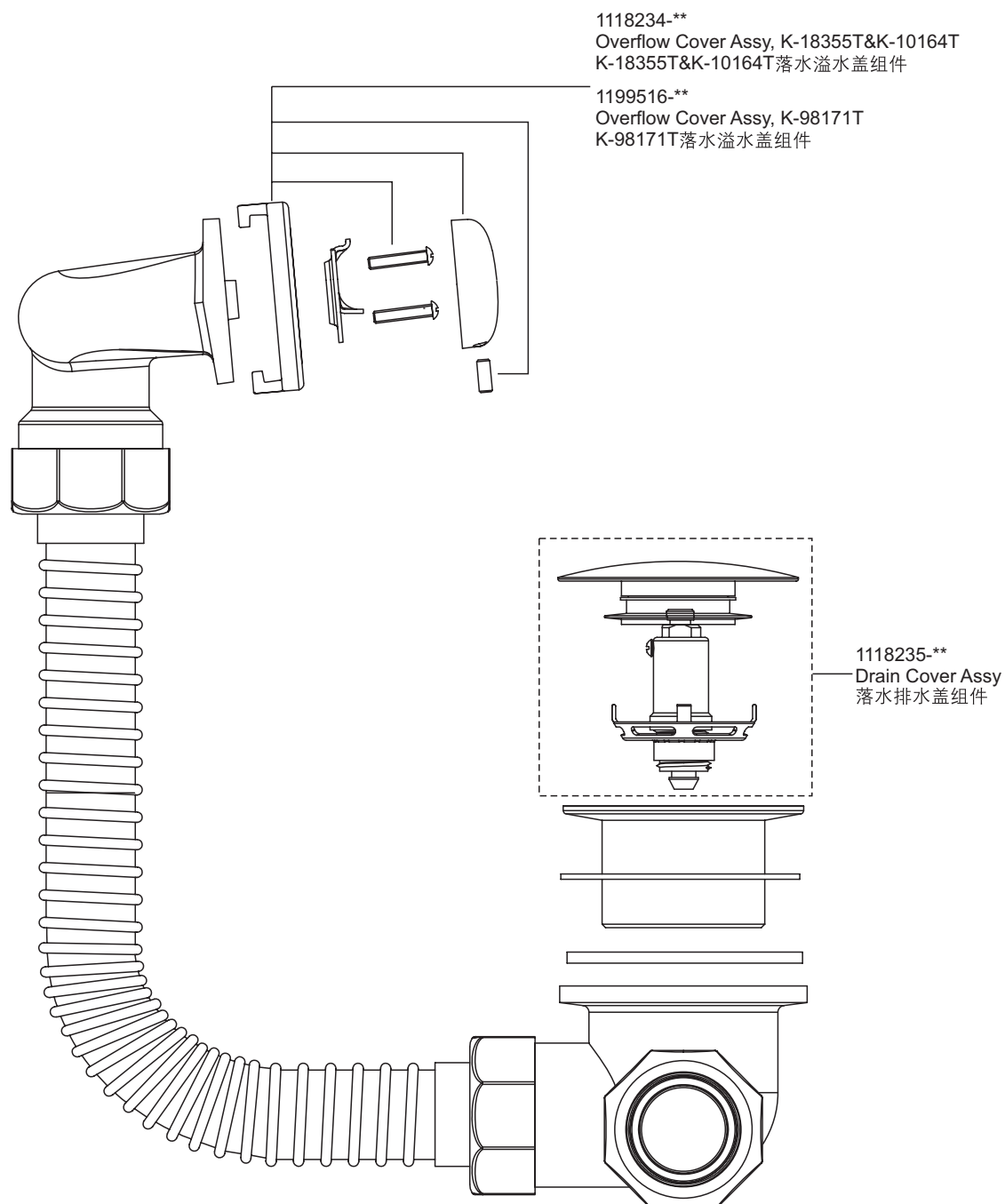
For best results, keep the following in mind when caring for your KOHLER product:

- Use a mild detergent such as liquid dishwashing soap and warm water for cleaning. Do not use abrasive cleaners that may scratch or dull the surface.
- Carefully read the cleaner product label to ensure the cleaner is safe for use on the material.
- Always test your cleaning solution on an inconspicuous area before applying to the entire surface.
- Do not allow cleaners to sit or soak on the surface.
- Wipe surfaces clean and rinse completely with water immediately after cleaner application. Rinse and dry any overspray that lands on nearby surfaces.
- Use a soft, dampened sponge or cloth. Never use an abrasive material such as a brush or scouring pad to clean surfaces.

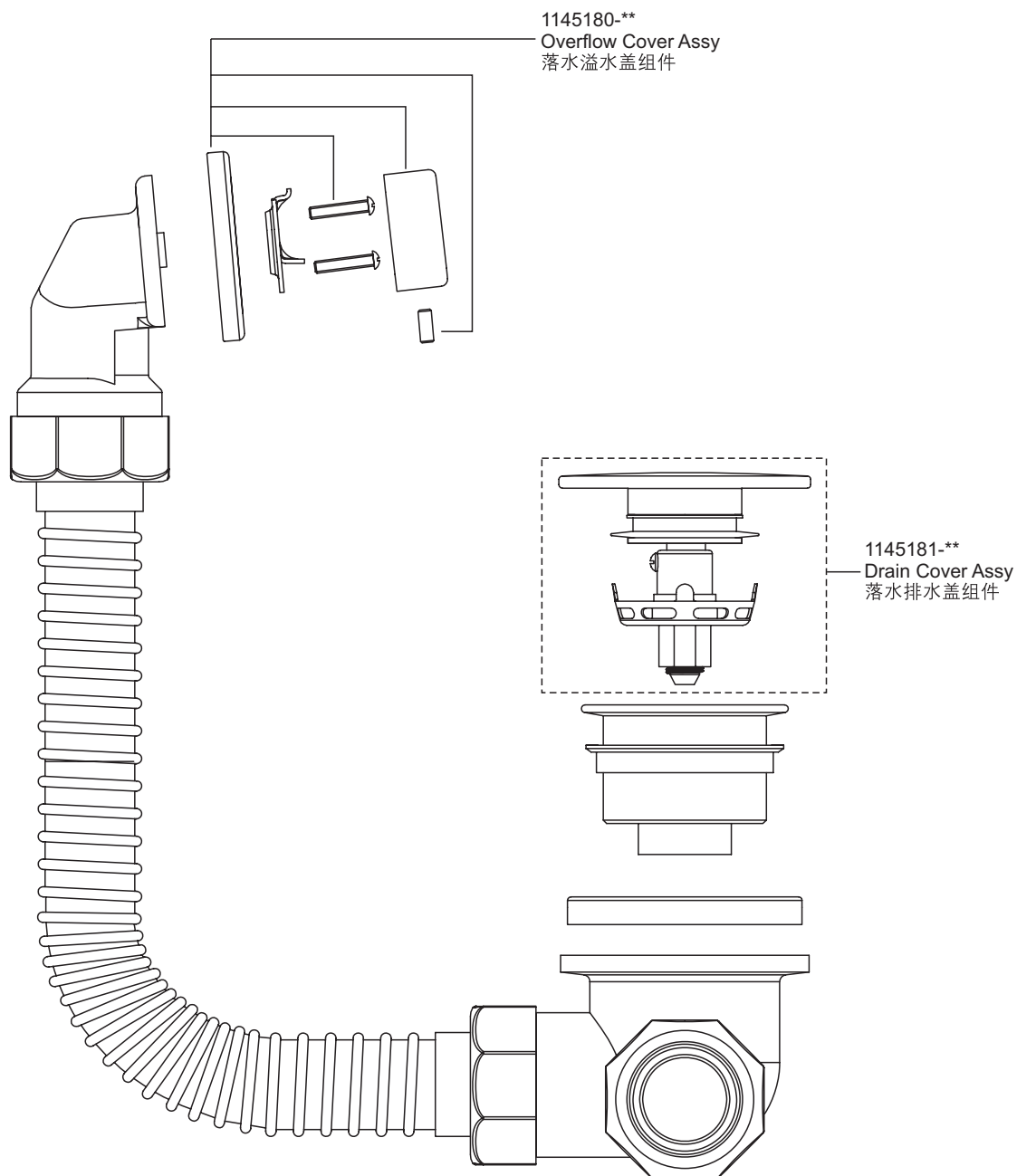
护理和清洁

为了长久使用，请在护理您的科勒产品时注意以下几点：

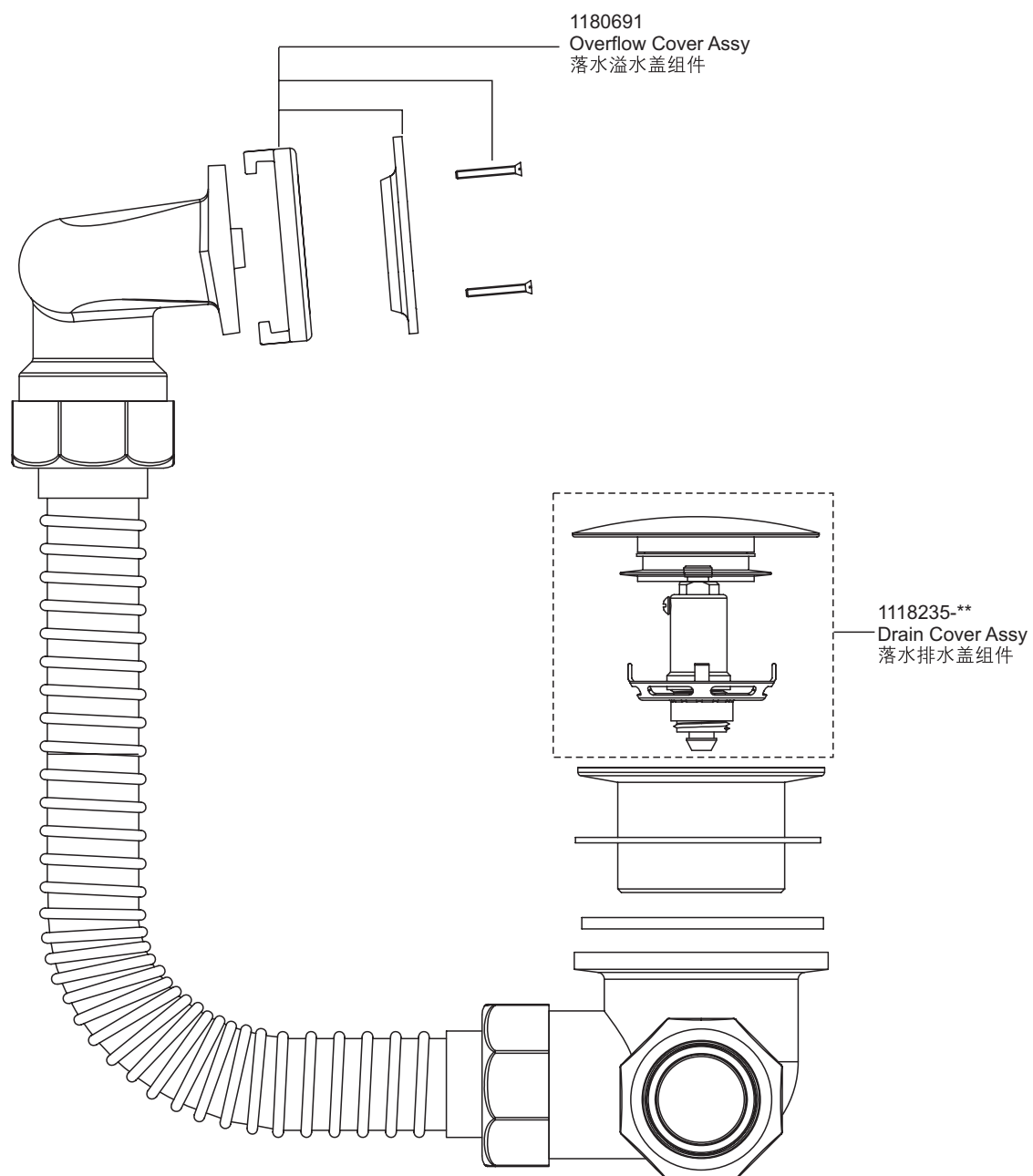
- 使用中性清洁剂，例如液体洗洁精和温水进行清洗。请不要使用研磨清洁剂，以免刮划或使表面变钝。
- 请仔细阅读清洁剂说明以确认其更够在产品上安全使用。
- 在大面积使用清洁剂之前，请务必先在不显眼处先试验清洁方式。
- 请不要将产品表面浸泡在清洁剂中。
- 使用清洁剂后，请立即擦拭并用水彻底清洗。清洗并擦干溢溅在周围表面的清洁剂。
- 使用柔软湿润的海面或清洁布，请勿使用研磨材质，例如刷子和百洁布来清洁表面。



订购时请说明颜色代码(-*)或表面处理(-**)
Color code (-*) or finish (-**) must be specified when ordering.



订购时请说明颜色代码(-*)或表面处理(-**)
Color code (-*) or finish (-**) must be specified when ordering.



订购时请说明颜色代码(-*)或表面处理(-**)
Color code (-*) or finish (-**) must be specified when ordering.