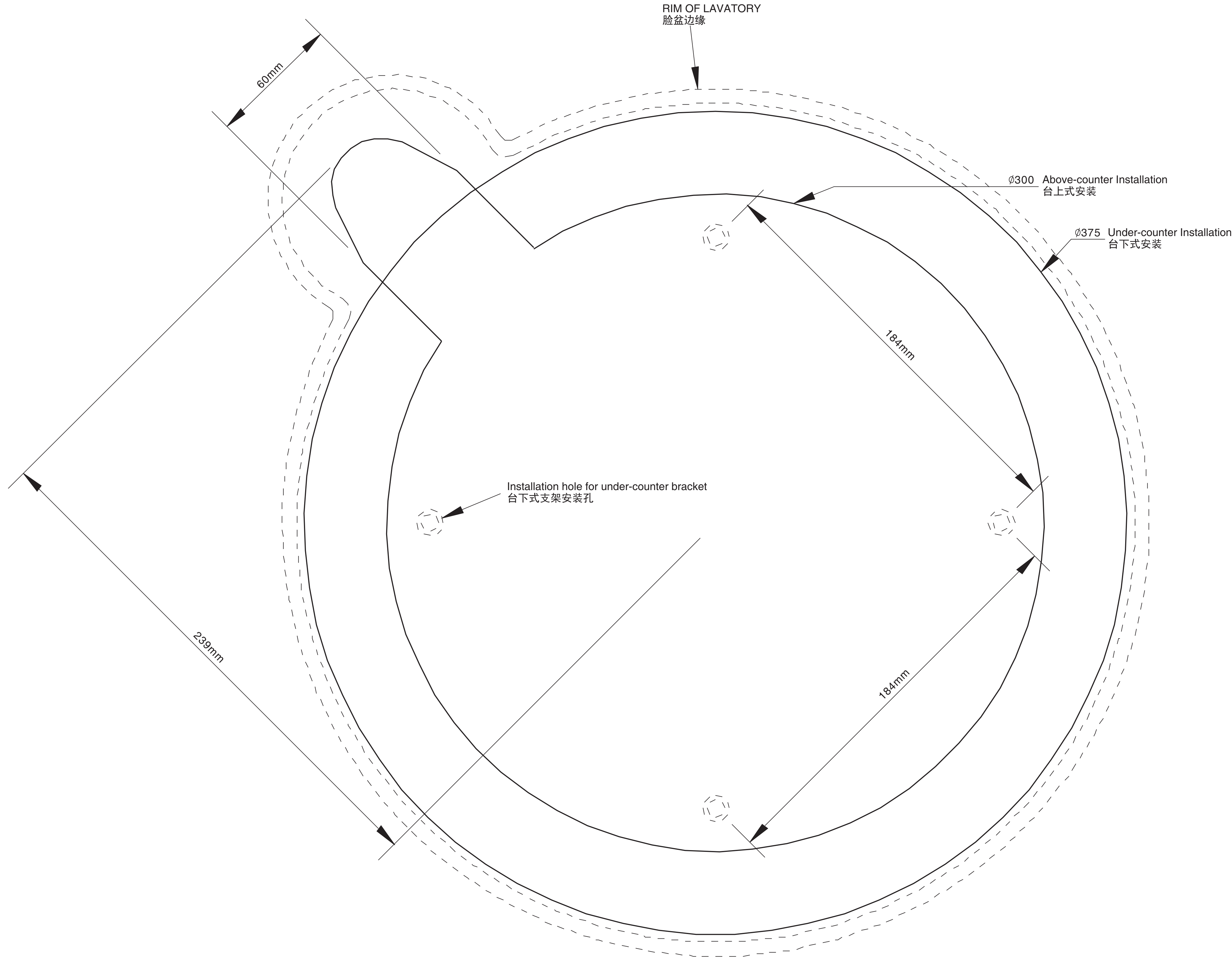




CAST IRON UNDER-COUNTER VESSEL
铸铁时尚碗盆
CUT-OUT TEMPLATE / INSTALLATION INSTRUCTIONS
切割图/安装说明书



SHANGHAI KOHLER LTD., NO.368, MIN LE ROAD,
FENG XIAN DISTRICT, SHANGHAI, CHINA POST CODE 201419
上海科勒有限公司 上海市奉贤区民乐路368号 邮编：201419

© Copyright Kohler China Investment Co., Ltd. 2018
© 版权为科勒(中国)投资有限公司所有 2018

K-1766T
ZEN 灵石

BEFORE YOU BEGIN

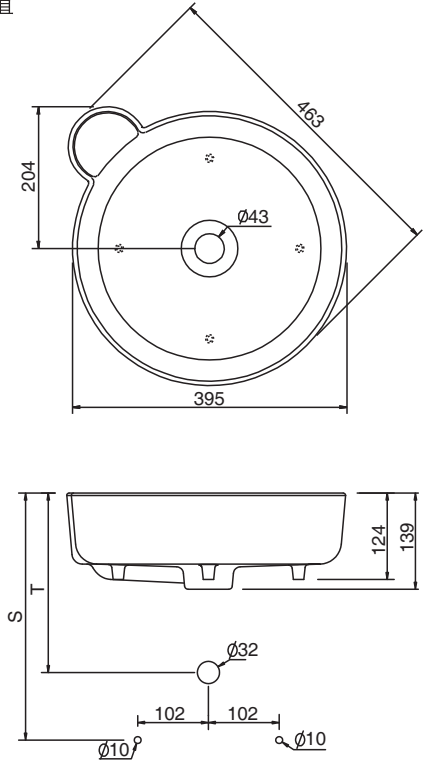
- Due to the nature of the installation, undercounter lavatories should be installed by trained and experienced installers.
- Do not use adhesives or adhesive sealants with this product.
- Inspect the waste and supply tubing; replace if necessary.
- Prior to installation, unpack the new lavatory and inspect it for damage. Return the lavatory its protective carton until you are ready to install it.
- Observe all local plumbing and building codes.
- Kohler lavatory is made according to American National Standard that it can match the American lavatory fittings. Any other lavatory fittings may not fit for kohler lavatory.
- Use the instructions for above-counter and under-counter installation. Please follow the instructions that apply to your installation.
- You can choose between a wall-mount or countertop faucet installation, depending upon the setting and styling you desire. We recommend a wall-mount faucet.
- Prior to installation, unpack the new lavatory and carefully inspect it for damage. Return the lavatory to its protective carton until you are ready to install it.
- All information in these instructions is based upon the latest product information available at the time of publication. Kohler China reserves the right to make changes in product characteristics, packaging, or availability at any time without notice.
- These instructions contain important care, cleaning, and warranty information. Please leave these instructions for the consumer.
- The vessel weighs 12.5kg.

TOOLS AND MATERIALS
(Not Supplied)

- Sealant
 - Pencil
 - Tape measure
 - Sharp knife or scissors
 - Keyhole or saber saw
 - Drill (1/2" dia. drill bit or larger)
 - Safety glasses
 - Hammer
 - Rags or paper toweling
 - Template (supplied)
 - Hole Saw
 - Screwdriver
- NOTE:** You may require different, more specialized tools to install this lavatory to countertop materials other than wood or wood composites.

ROUGHING-IN

Reference Value
参考值



Roughing-In Notes
Fixture dimensions are nominal and conform to tolerances in ASME Standard A112.19.2.
(T) Pop-up drain 238mm.
(S) 356mm. (Based on 305mm riser which may require cutting).
Minimum 50mm distance from water stream to the vessel rim edge when installed with centerline as shown.
Conform to tolerances in ASME Standard A112.1.2; spout must be tall enough to clear 76mm rim height(vertical distance from top of the vessel to spout)and provide 25mm air gap.

尺寸资料
产品尺寸均为标准值，误差均符合美国机械工程师协会(ASME)A112.19.2标准。
(T) 使用提拉杆去水头238mm。
(S) 356mm。此尺寸根据305mm冒口计算，须按实际情况调整。
采用图示中心线安装时，确保水流与脸盆边缘间至少有50mm。
出水嘴须至少高达76mm(从脸盆最高点测出水嘴垂直距离)并依据ASME A112.1.2标准，有25mm气隙。

Kohler reserves the right to change marked dimensions without prior notice.
科勒公司保留随时变更图中标示尺寸的权利，无需另行通知。

安装之前

- 有关安装属专业性质，故盥洗台下脸盆必须由受过训练及有经验的技师进行安装。
- 切勿在本品上使用胶黏剂或有黏性的密封胶。
- 检查出水及供水管道，如有需要便更换。
- 安装之前先开启脸盆的包装，检查有无损毁后放回纸箱中以免损坏，到准备安装时才取用。
- 遵守当地所有给排水及建筑规定。
- Kohler lavatory is made according to American National Standard that it can match the American lavatory fittings. 与美式洗脸盆配件相配，其它洗脸盆配件可能与之不相配。
- 台上式和台下式脸盆可使用此说明书，请遵照适合您安装需要的说明进行。
- 根据您所需的安装地及安装风格，您可选择龙头靠墙安装或台上安装，建议您采用靠墙式龙头。
- 安装之前，先开启脸盆的包装，并小心检查新的脸盆是否有损坏，再将脸盆放回包装盒内，到安装时才取用。
- 本说明书所含一切资料，均以印刷时所有的最新产品为准，科勒公司保留随时更改产品特性、包装或供应情况的权利，恕不另行通知。

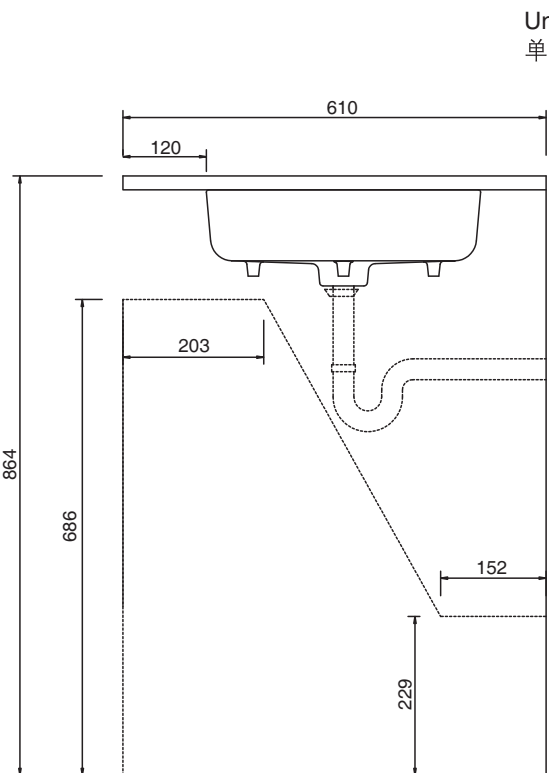
- 此说明书包括重要的护理、清洁及保修资料请将此说明书交用户留存。
- 脸盆自重12.5kg。

所需工具及物料
(不随货供应)

- 密封胶
- 炭笔
- 卷尺
- 尖刀或剪刀
- 匙孔线锯或手提电锯
- 钻(直径1/2英寸或更大的钻咀)
- 防护眼镜
- 锤子
- 抹布或抹手纸
- 安装模板(已提供)
- 孔锯
- 螺丝刀

注意：盥洗台的物料并非木质或木质成品，则您可能需要在安装脸盆时使用其他更专门的工具。

尺寸图



Unit:mm
单位:毫米

UNDER-COUNTER INSTALLATION

INSTALL THE LAVATORY

- Check the desired lavatory location for clearance between the backsplash, faucet, fixture, and cabinet.
- Cut out the template.
- Carefully position and trace the template on the countertop as directed on the template.
- Mark the faucet hole centerline on the countertop.
- Cut out the countertop opening with a saber or keyhole saw.
- If the countertop has not been installed, install it at this time.
- Drill the faucet holes according to the faucet installation instructions.
- Install the faucet to the countertop according to the manufacturer's instructions.
- Install the drain to the lavatory according to the manufacturer's instructions.

NOTE: Do not use adhesives or adhesive sealants.

- Apply a continuous bead of quality sealant to the lavatory rim where it will contact the countertop.

NOTE: The bracket is not supplied with the product.
Trace the template on the countertop with a soft pencil and mark the hole for the faucet. Cut out the opening carefully.

- Make the final drain and faucet connection to complete the final drain and faucet connection to complete the lavatory installation. Be sure to follow all instructions packed with the drain and faucet.
- Clean up with a **non-abrasive** cleaner.

ABOVE-COUNTER INSTALLATION
INSTALLATIONS

Position the template on the countertop.

For Wall-mount faucets: Be sure to provide sufficient spout overhang into the lavatory basin. See the roughing-in notes for minimum spout length information.

For Countertop Faucets: Pay special attention to the spout and handle fit clearance when locating the faucet, as noted below. Use the template to locate the faucet spout hole centerline on the countertop. This centerline is recommended to provide adequate clearance between the edge of the lavatory and the spout.

Trace the template on the countertop with a soft pencil and mark the hole for the faucet. Cut out the opening carefully.

Verify proper clearance between the lavatory, faucet, and backsplash.

Drill the faucet holes.
Install the faucet to the countertop according to the manufacturer's instructions.

For tile, wood, or other porous materials, apply waterproof sealant around the cutout area of the countertop surface. Follow all manufacturer's instructions and warnings. Allow the sealant to dry before proceeding.

CAUTION: Risk of personal injury or product damage. Large lavatories are very heavy. Get help lifting the lavatory into place.

Note the location of the "Kohler" logo. The lavatory should be installed so the logo is visible after installation.

Carefully position the lavatory in the cutout, and press down firmly.

台下式安装

安装脸盆

- 检查准备装上脸盆的位置，是否与后挡水板、水龙头、脸盆及柜子保持足够的距离。
- 剪出模板。
- 将模板小心放置于盥洗台上，并在台面上按照模板画出其边缘轮廓导线。
- 在盥洗台上标出水龙头孔位的中心线。
- 用手提电锯或匙孔线锯切开盥洗台。
- 如还未安装盥洗台，请在这时装上。
- 按照龙头安装说明引钻水龙头。
- 按照制造商的说明书，在盥洗台上装水龙头。
- 按照制造商的说明书，在脸盆下装上排水管。

注意：请勿在本品上使用胶黏剂或有黏性的密封胶。

在与盥洗台接触的洗脸盆边缘，如珠串胶涂上优质密封胶。

注意：本产品不带支架，请客户另配。

- 用软性铅笔在台面上沿模板画线，并标出水龙头孔的位置，小心地沿切割线切割开口。

最后将所有水管及水龙头与脸盆连接妥当，确保安装乃符合水管及水龙头的一切有关的安装说明书。

- 使用非腐蚀性清洁剂进行清洁。

台上式安装

安装脸盆

将模板放在台面上，安装靠墙式水龙头，保证出水嘴悬于脸盆池上有足够的距离，需要出水嘴的最小长度资料，可参阅尺寸说明。

安装台上式水龙头：安装水龙头时，要如下列提示一样，特别注意出水嘴与把手的配合间隙，利用模板将水龙头出水嘴孔中心线放在台板上，建议此中心线在脸盆边缘与出水嘴间有足够的距离。

用软性铅笔在台面上沿模板画线，并标出水龙头孔的位置，小心地沿切割线切割开口。

检查脸盆、水龙头及防水板或后墙之间的间距是否适当。

钻好水龙头口。
依照制造商的说明书，将水龙头安在台面上。

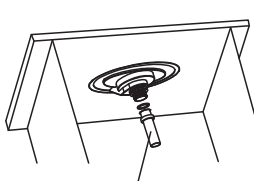
对于瓷砖、木材或其它多孔状材料，请使用防水密封胶涂沫在台面的切口处，遵守制造商提供的一切说明及警告，待密封胶干后，方可进行安装。

小心：提防身体受伤或损坏产品。大型脸盆相当重，须请人帮忙一起推动安装。

注意 "Kohler" 字样的位置，脸盆安装完毕后，应能看见此字样。

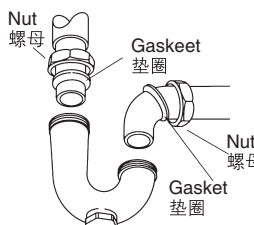
小心地将脸盆放入台面切口适当位置，向下按牢。

Connect the faucet supply lines.
Connect tale piece of drain. Screw tight the tale piece of drain provided to the bottom of the drain. Use rubber gasket to prevent leakage.



连接水龙头供水管。
连接落水尾管，将包裹中随附的落水尾管拧紧至落水器下端，在其中使用橡胶垫片以防漏水。

Connect the drain assembly.
Open the faucet valves, and check for leakage.
Clean up with a non-abrasive cleaner.



连接排水装置。
开启水龙头阀门，检查有无渗漏。
用非腐蚀性清洁剂来清洁。

CARE AND CLEANING

To keep your lavatory looking new, make sure you rinse it out thoroughly after each use. Do not use astringents cleansers and scouring pad on this product, as they will scratch and ruin the surface. Suggest using neutral household cleaners, and avoid Acetone, Ammonia, Toluene based cleaners or any paint thinners.

SERVICE PARTS

护理和清洁

为保持脸盆光洁如新，须确保每次使用后彻底冲洗干净，切勿使用腐蚀性的清洁剂和百洁布，以免刮花及破坏脸盆的表面，建议使用中性家用清洁剂，避免使用丙酮、氨基和甲苯类清洁剂或任何涂料稀释剂。

维修零件

