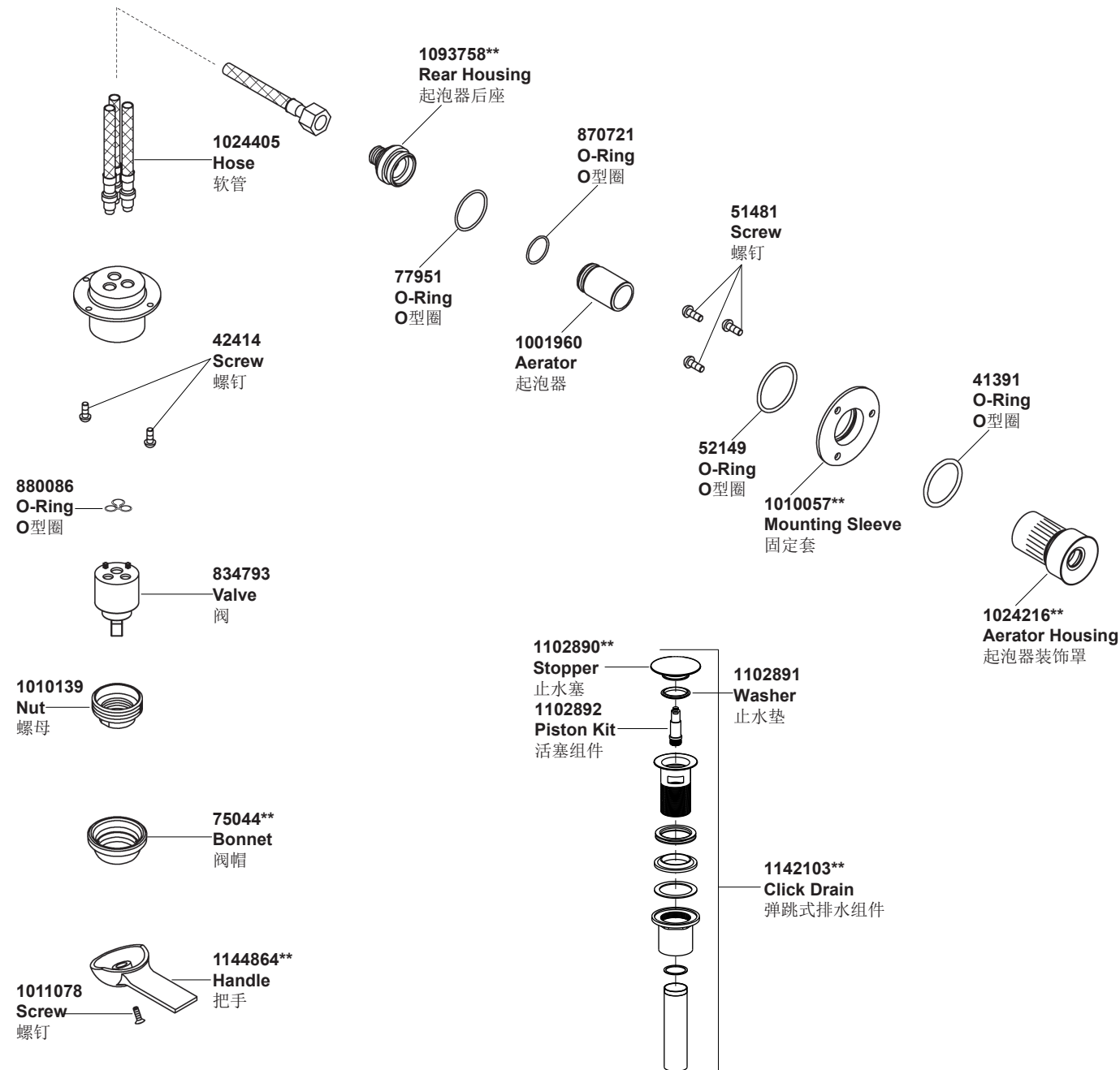


2587T-4 墙出水单把脸盆龙头



**订购时请说明颜色编号
**Color code must be specified when ordering

2587T-4 墙出水单把脸盆龙头

安装之前

所有的资料是按最新出版的产品资料编写而成。科勒公司保留任何时候不经通知即可改变产品特性、包装或产品可供类型的权利。

说明书包括重要的安装、保养及清洁方面的内容，请把这些资料交给用户阅读。

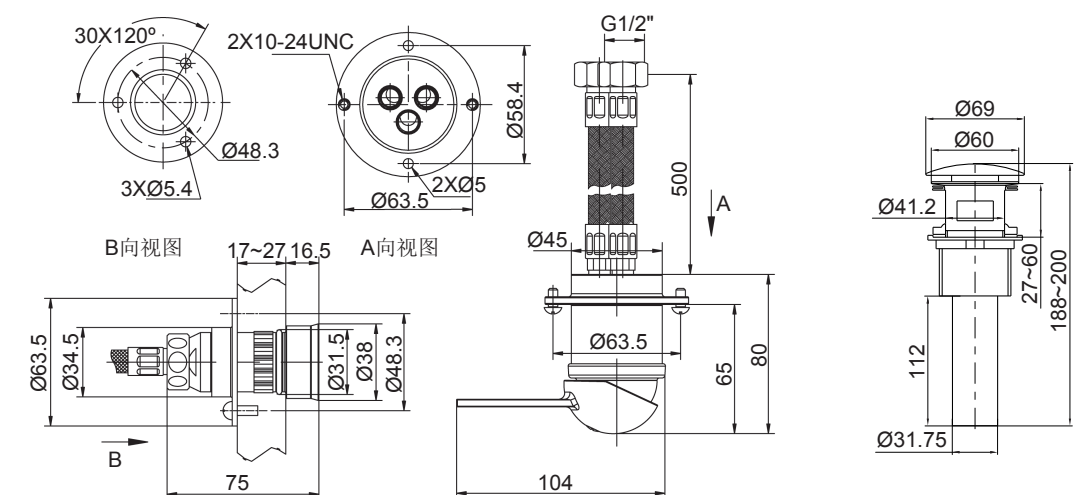
注意事项：

1. 一定要先彻底冲洗供水管以清除管道中的杂质。
2. 检查供水管有无损坏。如需要，进行替换。
3. 遵守当地管路安装条例。
4. 该龙头与柜架配合使用。
5. 尽量在安装柜架之前安装龙头。
6. 根据软管的长度确定适当的位置安装阀体组件，以使柜门开启不受影响。
7. 开启柜门时注意软管的存在，避免用力过大，损坏龙头或橱柜，甚至伤害使用者。

使用说明

将手柄轻轻提起，向左转为热水，右转为冷。

安装尺寸



BEFORE YOU BEGIN

All information is based on the latest product information available at the time of publication. Kohler Co. reserves the right to make changes in product characteristics, packaging, or availability at any time without notice.

Please leave these instructions for the consumer. They contain important information.

NOTES:

1. Flush the water supply pipes thoroughly to remove debris.
2. Inspect the supply tubing for damage. Replace as necessary.
3. Observe local plumbing codes.
4. It must work with a cabinet/shelf.
5. If possible, install this faucet before installing the cabinet/shelf.
6. According to length of hoses, determine a suitable location to install valve assembly, ensure the door of cabinet/shelf can open properly.
7. Don't overexert when opening the door of cabinet/shelf, otherwise, it may cause the damage for faucet or cabinet/shelf, even hurt the user as well due to hose existence.

HANDLE OPERATION

Lift the handle gently. Turn left for hot water, right for cold water.

ROUGH-IN DIMENSIONS

安装说明	INSTALLATION
<p>如何安装阀体组件</p> <p>打开柜子或架子的门。选定适当位置打阀体安装孔，直径Ø45.5-Ø48mm。从柜子/架子下侧将软管(3, 4)及阀体组件穿入阀体安装孔。直到阀体组件紧贴柜架下表面。找正阀体组件，使把手(1)朝前, 且在左右偏转的中间位置，用自攻钉(2-2)(客户自备)或提供的螺钉(2-1)固定阀体组件。</p>	<p>How To Install The Valve Assy</p> <p>Open the cabinet/shelf. Determine the suitable mounting location to make opening. The diameter of it is Ø45.5-Ø48mm. From the bottom of the cabinet/shelf, feed the hoses(3, 4) of the valve assembly through the opening, until the valve assembly is against underside of cabinet/shelf. Keeping the handle(1) frontwards and at the middle mixing position, secure the valve assembly by self-tapping screws(2-2)(not provided) or provided screws(2-1).</p>
<p>如何安装出水口组件</p> <p>选定适当的位置打出水口安装孔，直径Ø31-Ø31.5mm。将固定套(6)从出水口组件(5)卸下，确保O型圈(7)嵌入固定套凹槽内。小心地将出水口组件从镜子前面装入安装孔，贴紧镜面。轻轻将固定套套入出水口。用自攻钉(8) (客户自备)或提供的螺钉适当锁紧固定套以固定出水口组件。</p> <p>柜子/架子装好后，将出水软管(3)连接到出水口组件起泡器后座(16)上。将带有红色标记的进水管(4)接热水。将带有蓝色标记的进水管接冷水。锁紧所有接头。</p>	<p>How To Install The Spout Assy</p> <p>Determine the desired mounting location to drill hole. The diameter of it is Ø31-Ø31.5mm. Remove the mounting sleeve(6) from spout assembly(5). Ensure the o-ring(7) is set in the groove of the mounting sleeve. From the front of the mirror, carefully insert the spout assembly into the hole, until it blocked by the mirror. Gently slide the mounting sleeve onto the spout assembly. Properly secure the spout assembly by fixing the mounting sleeve with self-tapping screws(8)(not provided) or provided screws.</p> <p>After cabinet/shelf installation fininshed, attach the outlet hose(3) to rear housing(16) of the spout. Connect the supply hose(4) with red mark to the hot supply. Connect the supply hose with blue mark to the cold supply. Tighten all connections.</p>
<p>如何安装排水器</p> <p>将锁紧螺母(13)、塑料垫片(12)、橡胶垫圈(11)从排水本体上取下。把排水本体从脸盆上部孔插入。再依次将橡胶垫圈(小面朝上)、塑料垫片和锁紧螺母从排水本体底部装入。锁紧螺母。</p> <p>注意: 如果需要, 可直接在排水器法兰(9)底面沿周围涂上一圈密封油灰或其它密封剂, 而不使用橡胶垫片(10)。在锁紧螺母拧紧后，不可调整排水本体的位置，否则会破坏油灰或密封剂密封。去除多余的油灰。</p>	<p>How To Install The Drain</p> <p>Remove the locknut(13), plastic washer (12), rubber gasket(11) from the drain body. Insert the drain body into the lavatory. Reinstall the rubber gasket (tapered side up), plastic washer and locknut back to the drain body in turn. Tighten the locknut.</p> <p>NOTE: If needed, apply a ring of plumbers putty or other sealants around the underside of the drain flange(9), instead of using rubber washer(10). Do not reposition the drain after the locknut is tightened, or you may break the putty or sealant seal. Remove any excess putty.</p>

安装结果检查	INSTALLATION CHECKOUT
<p>确保已拧紧所有衔接处。确保把手在“关”的位置。打开排水器，打开主供水源，检查泄漏。</p> <p>清理或更换起泡器</p> <p>将出水口组件从固定套中轻轻抽出。注意：不能断开起泡器后座(16)和出水管(3)。</p> <p>用活扳手夹住泡器后座，逆时针转动起泡器装饰罩(14)，松开并取下起泡器装饰罩。</p> <p>将起泡器(15)从起泡器后座拔出。打开阀，使水流过出水口，除掉杂物，关闭阀。更换或清洗起泡器。</p> <p>将起泡器装入起泡器后座。用活扳手夹住起泡器后座，顺时针转动起泡器装饰罩将其旋到起泡器后座上。确保起泡器装饰罩和起泡器后座之间没有缝隙。</p> <p>将出水口组件轻轻装回固定套。注意：不能将软管打结或损坏。</p>	<p>Ensure that all connections are tight. Ensure that the handle is in the off position. Open the drain. Turn on the main supplies and check for leaks.</p> <p>Clean Or Repalce The Aerator</p> <p>Gently pull out the spout assembly from the mounting sleeve. Note: Do not disconnect the outlet hose(3) from the rear housing(16).</p> <p>Hold the rear housing in place with an adjustable wrench while turning the aerator housing(14) counterclockwise. loosen and remove the aerator housing from the rear housing.</p> <p>Using your hand, pull the aerator(15) out from the rear housing. Turn on the valve. Run water through the spout to remove any debris. Turn off the valve. Replace or clean the aerator at this time.</p> <p>Slide the aerator into rear housing. Hold the rear housing in place with an adjustable wrench while turning the knurl clockwise. Ensure no gap between the aerator housing and rear housing.</p> <p>Gently reinstall spout assembly into mounting sleeve. Note: Don't damage or kink the flexible hoses.</p>
<p>更换止水垫及活塞组件</p> <p>逆时针旋下止水塞(17)，取出止水垫(18)。更换新的止水垫。逆时针旋下活塞组件(19)，更换新的活塞组件。装回止水垫及止水塞。</p>	<p>Replacing Washer And Piston Kit</p> <p>Turn counterclockwise to remove the stopper(17). Take out washer(18). Replace with a new one. Turn counterclockwise to remove the piston kit(19). Replace with a new one. Reinstall stopper and washer.</p>
<p>清洗说明</p> <p>适用于所有加工处理过的表面：以中性肥皂水清洗镀层表面，再以干净的软布彻底擦干整个表面，许多清洁剂，比如氨水、去污粉及洁厕灵等，会对电镀表面造成伤害，切忌使用。</p> <p>有磨损性的清洁用具或清洁剂也不可使用于科勒牌的水龙头及其配件上。</p>	<p>CLEANING INSTRUCTIONS</p> <p>All Finishes: Clean the finish with mild soap and warm water. Wipe entire surface completely dry with clean soft cloth. Many cleaners may contain chemicals, such as ammonia, chlorine, toilet cleaner etc. which could adversely affect the finish and are not recommended for cleaning.</p> <p>Do not use abrasive cleaners or solvents on Kohler faucets and fittings.</p>