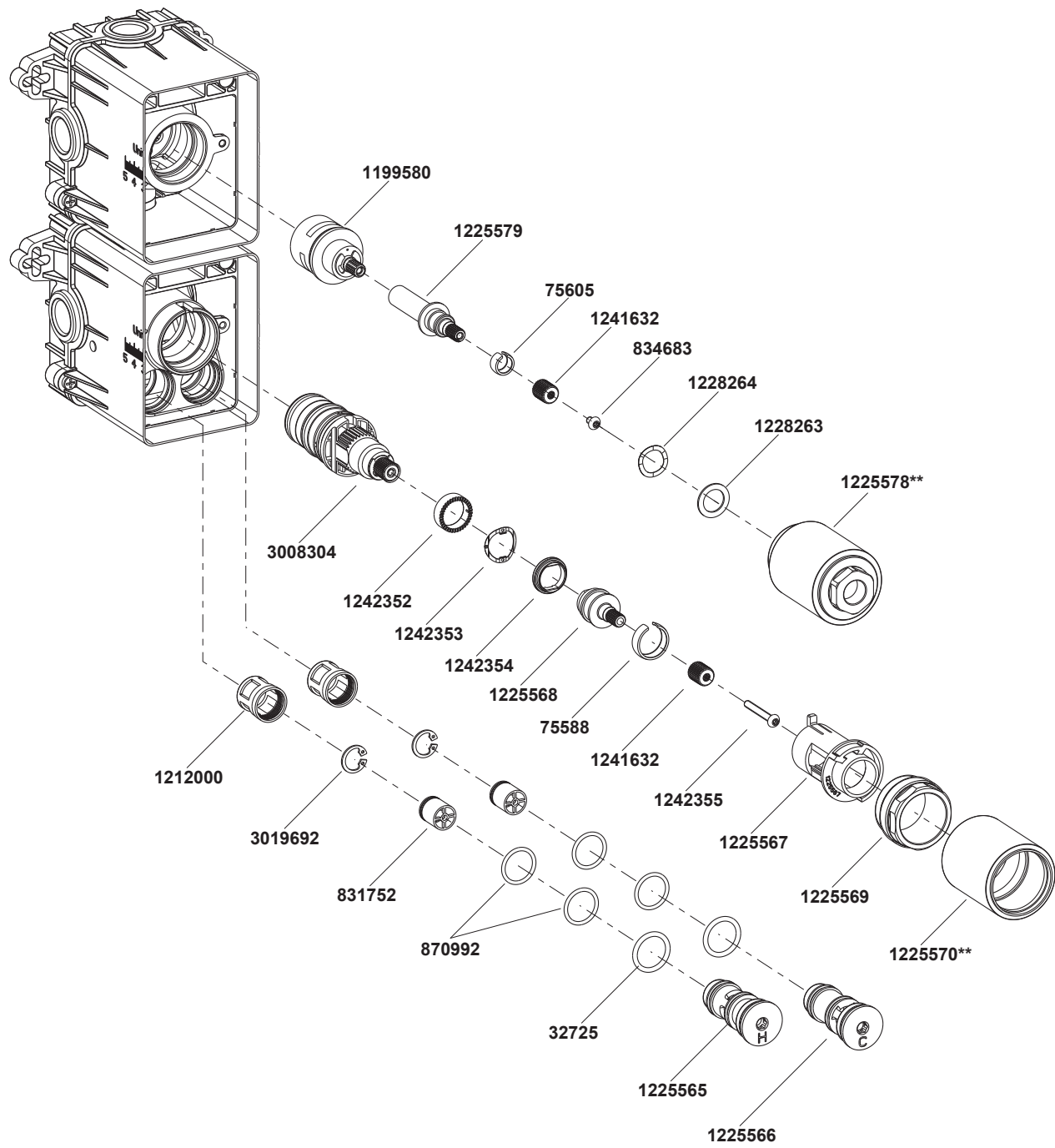


99870T Recessed Thermostatic 3 Way Valve Set



**Color code must be specified when ordering.

99869T Recessed Thermostatic 2 Way Valve Set
99870T Recessed Thermostatic 3 Way Valve Set

BEFORE YOU BEGIN

All information is based on the latest product information available at the time of publication. Kohler Co. reserves the right to make changes in product characteristics, packaging, or availability at any time without notice.

Please leave these instructions for the consumer. They contain important information.

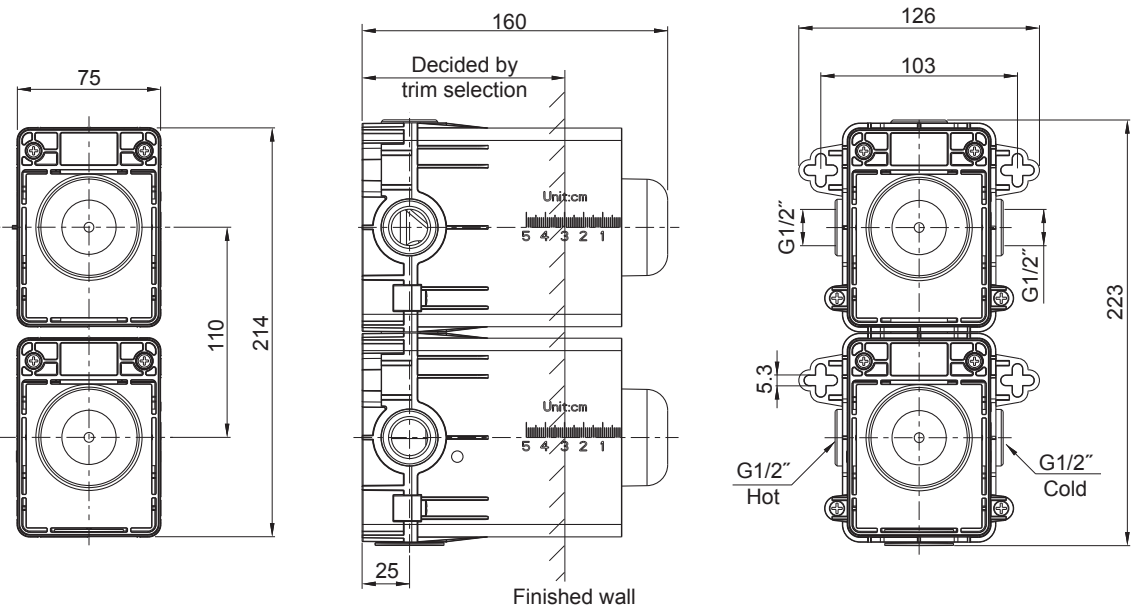
NOTES:

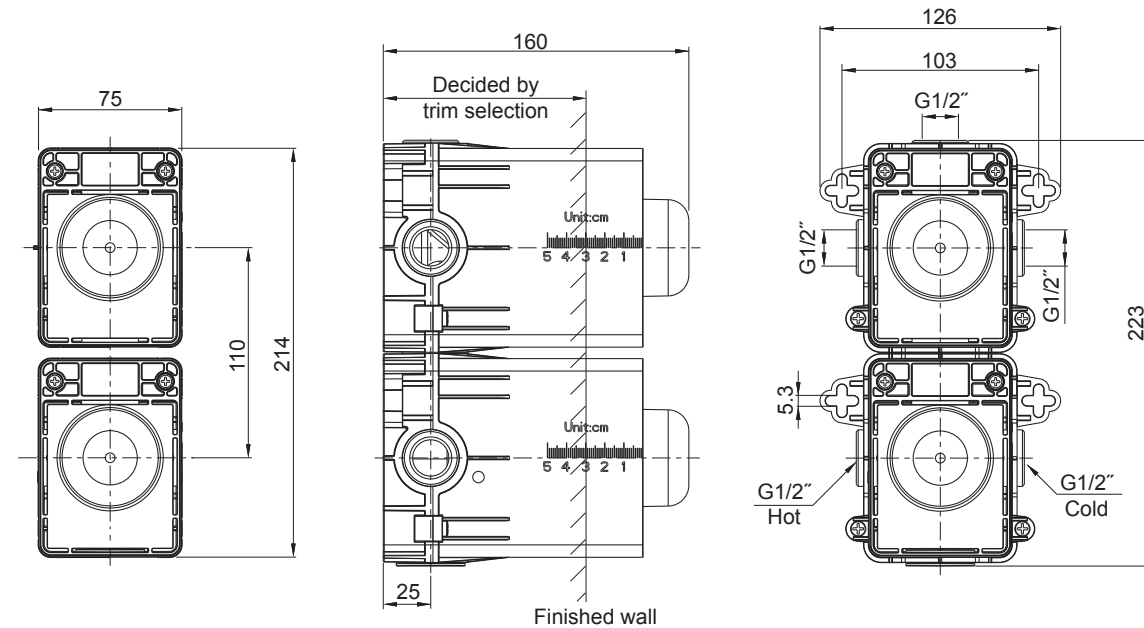
1. The dimensions from the finished wall to the centerline of the valve decided by the trim selection.
2. Do not remove the plastic guard from the valve body until instructed to.
3. Check for leaks before covering the pipes, repair as needed.
4. Please ensure only apply water pressure test on the product, and empty the air in pipe and faucet thoroughly before the test. Please ensure test pressure below 0.8MPa(8bar) and test duration within 30 minutes.

OPERATION CONDITION

1. Minimum supply pressures: 0.05MPa(0.5bar).
2. Recommended supply pressures: 0.3MPa(3bar) on hot and cold water.
3. If supply pressure higher than 0.5MPa(5bar), install a pressure reducer.
4. Pressure difference between hot and cold supplies: 0.2MPa(2bar) maximum.
5. Hot supply water temperatures, minimum: 50°C, maximum: 70°C.
6. Recommended hot supply water temperature: 60°C (energy-saving).
7. Setting range, approximately: 20°C to 49°C.
8. Safety stop at: 37°C.

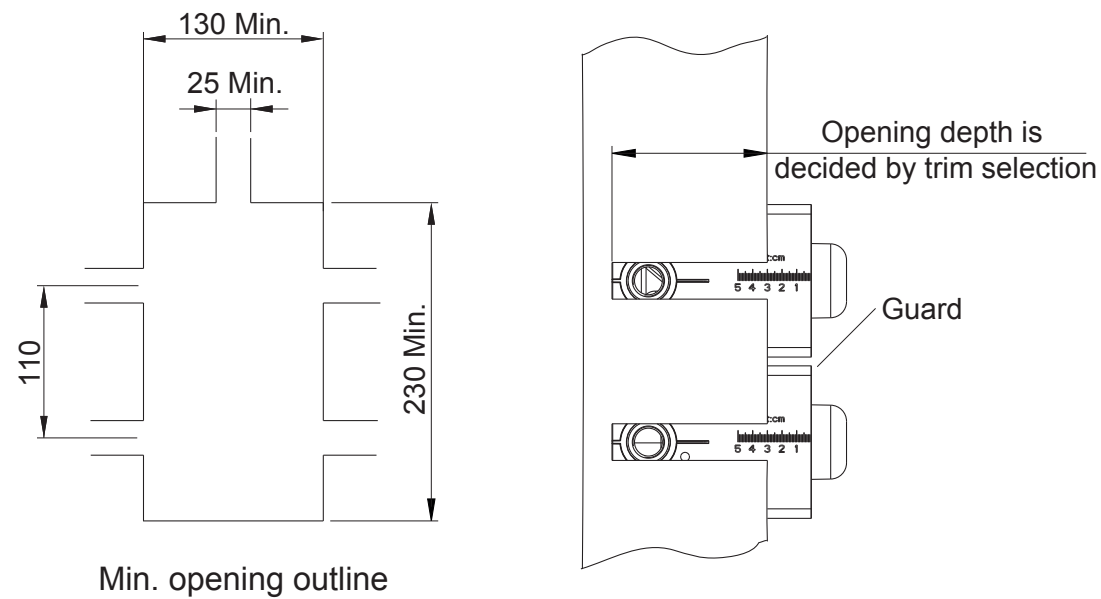
ROUGH-IN DIMENSIONS





99870T

INSTALLATION



How to Install the Valve

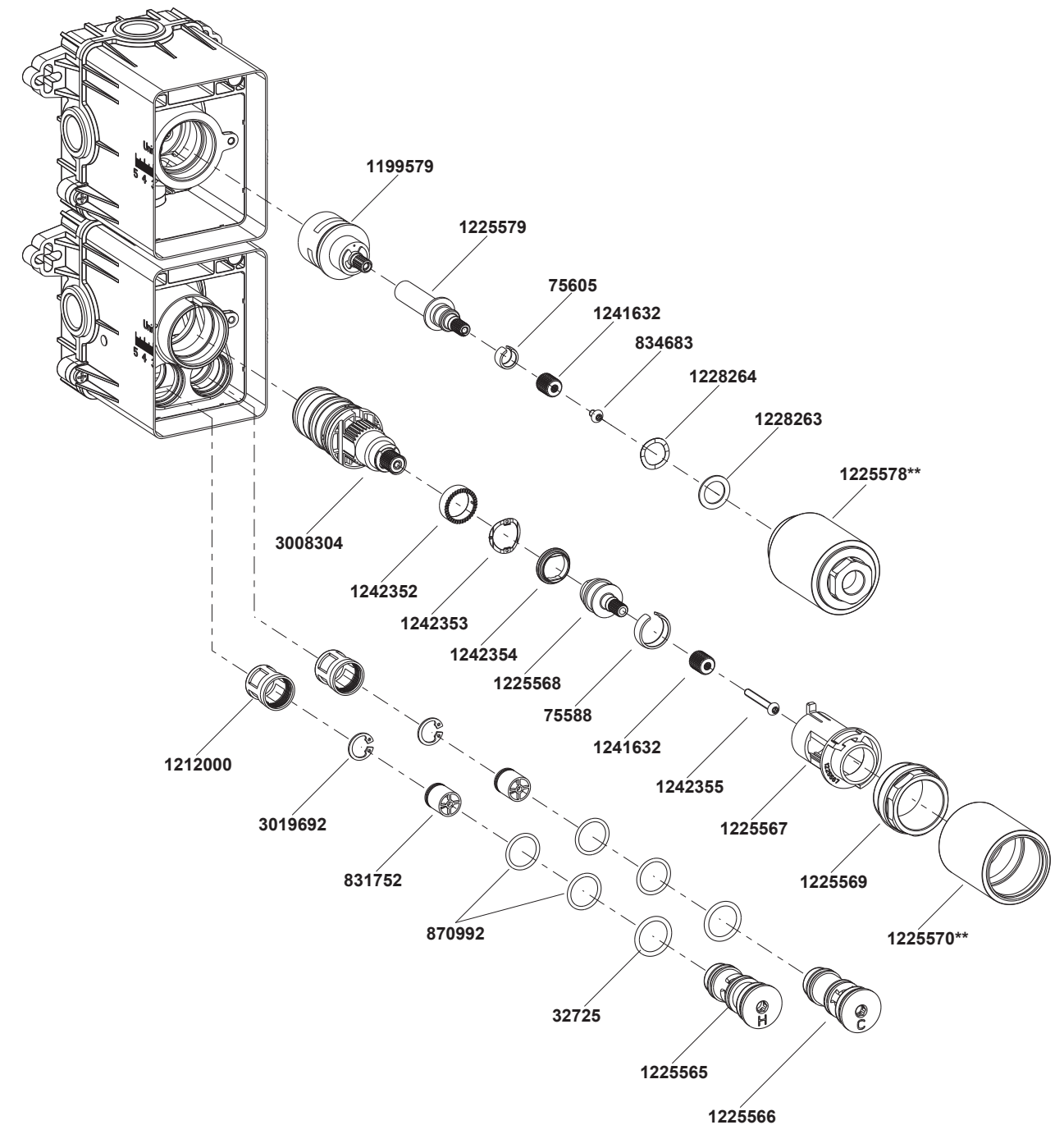
Flush the water supply pipes thoroughly to remove debris before installation. Shut off the main water supply.

Determine a suitable location on the wall to install the valve body. The product can be rotated to install. This guide just for common installation.

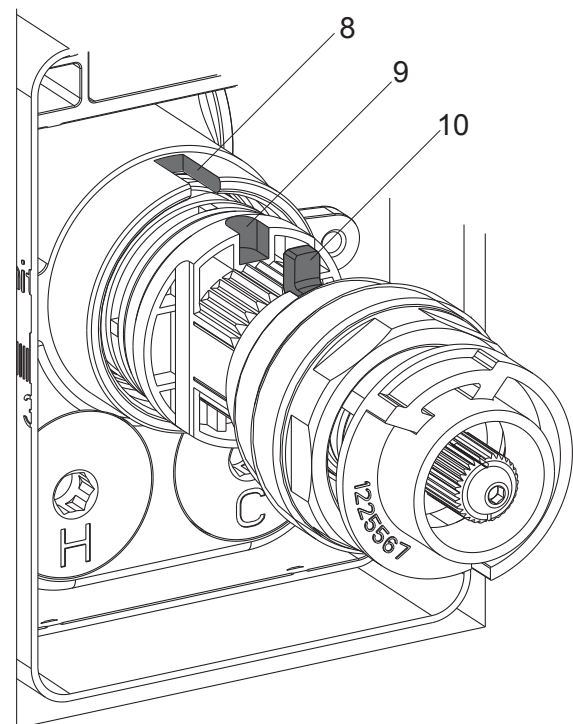
Be sure the valve bodies are in correct direction. During installation, keep valve guard on valve body.

The size of opening is shown as the figure. The min. and max. dimensions of the opening depth are decided by trim selection. **NOTE:** Ensure the valve is horizontal by the attached bubble level, and perpendicular to the wall.

99869T Recessed Thermostatic 2 Way Valve Set



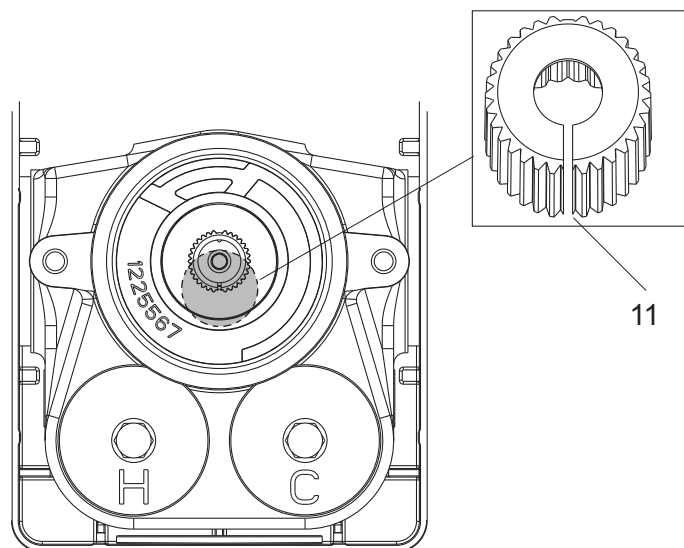
**Color code must be specified when ordering.



After cleaning, install the cartridge into the body, align the notch(8) of valve body to the notch(9) of cartridge. Make sure the bugle(10) match the notch of the cartridge.

Reinstall the fixed stop kit, tighten the valve nut. Reinstall the escutcheon and trim kit.

NOTE: Do not turn the cartridge when reinstall it.

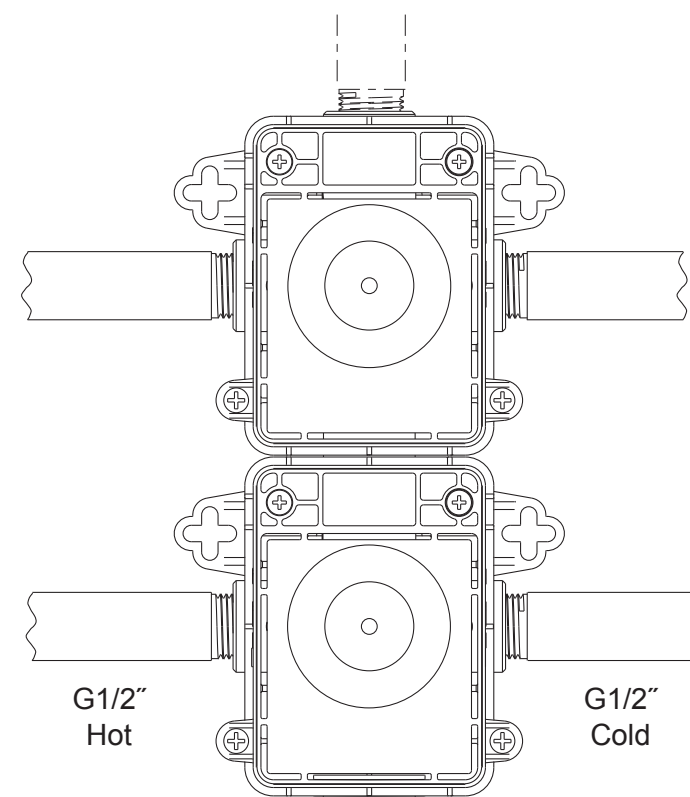


If you turned it without carefulness, you should adjust it and be sure that the notch(11) of adapter is downwards. For accurate temperature, it is supposed to verify and resetting the cartridge according to instruction in previous pages.

CLEANING INSTRUCTIONS

All Finishes: Clean the finish with mild soap and warm water. Wipe entire surface completely dry with clean soft cloth. Many cleaners may contain chemicals, such as ammonia, chlorine, toilet cleaner etc, which could adversely affect the finish and are not recommended for cleaning.

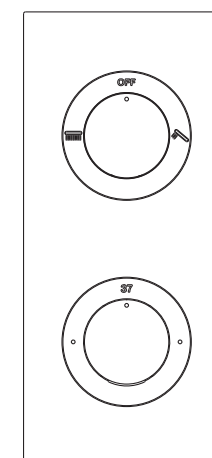
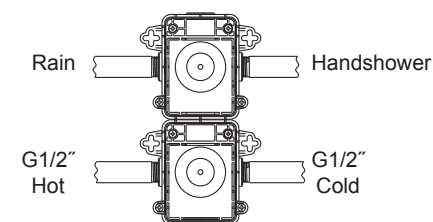
Do not use abrasive cleaners or solvents on Kohler faucets and fittings.



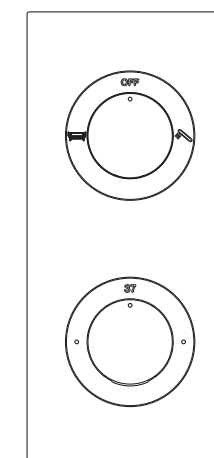
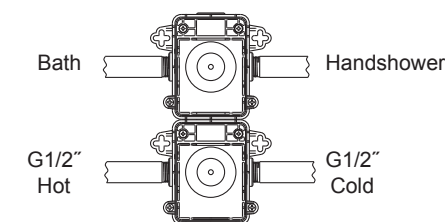
Supply enough tape or sealant to all connections.

Connect G1/2" hot and cold supplies to valve body. Connect hot supply to the end with red mark.

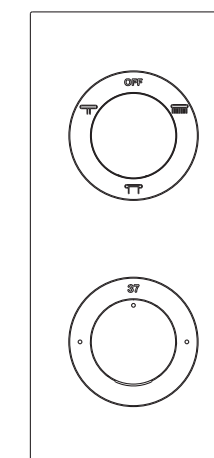
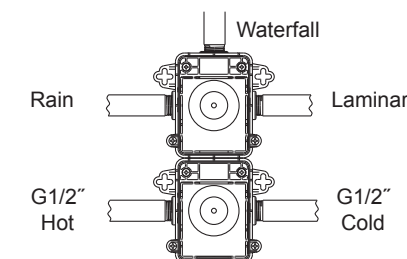
Connect handspray, rain, waterfall, laminar or bath supply to valve body according to installation instructions of selected trim kit(Refer to below figure).



99865T-9(Method 1)

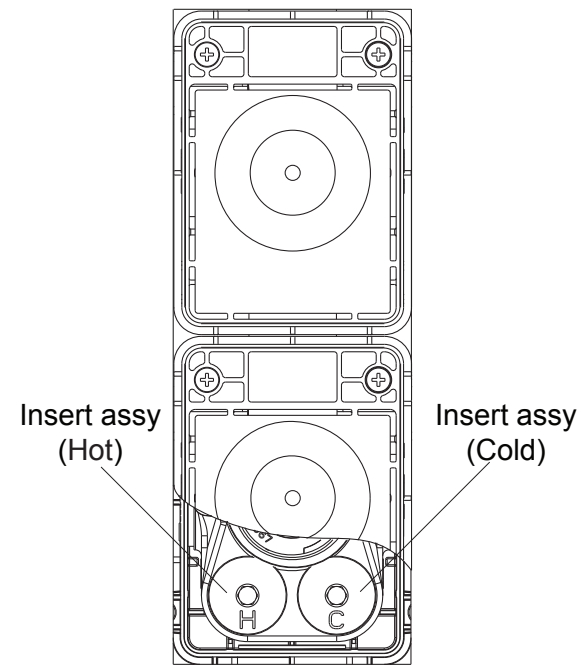


99865T-9(Method 2)



99866T-9

INSTALLATION CHECKOUT

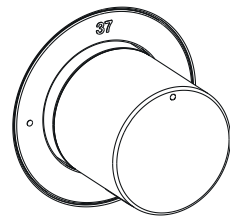


Ensure that all coupling nuts are tight. Ensure that the handle is in the off position. Turn on the main water supply, and check for leaks. Repair as needed.

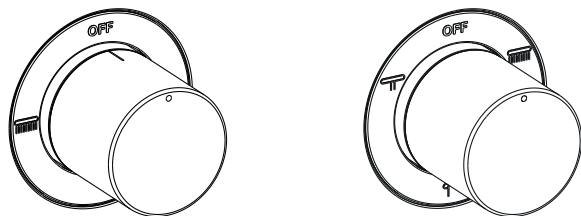
Apply cement around the mounting box kit. When the finished wall is completed, make sure the gap between the valve guard and the finished wall should be not more than 5mm. Apply silicon sealant to the gap.

If the hot and cold water supplies are misplaced, to ensure the product to work properly, installer must exchange the position of the hot and cold insert assy.

OPERATION INSTRUCTION



Temperature handle



Diverter handle

The temperature is set by slowly turning the temperature handle at underside (**NOTE:** the trim kit is purchased separately). For safety reasons, there is a stop that limits temperature to 37°C. To get a higher temperature, press the knob in the handle continue turning the temperature handle.

Water flow is set by turning the top diverter handle. When handle aligns with the mark 'OFF' on faceplate, water flow is blocked.

Temperature Verification and Setting

Make sure that the water feeds of the faucet have reached their highest temperature but within the recommended range by running the water sufficiently.

With the selector in position 37°C, the temperature of the water coming out of the faucet must be within a range of 36°C and 38°C, as measured by a thermometer. If the temperature out of the range, the installer can adjust the setting. Proceed with the setting as follows:

Remove the temperature handle kit(according to installation instruction of trim kit).

With the faucet on cold normal water flow, slowly turn the temperature selector(always in the same direction) until water at 37°C is obtained. If the temperature goes over 38°C, go back to the cold setting and set again.

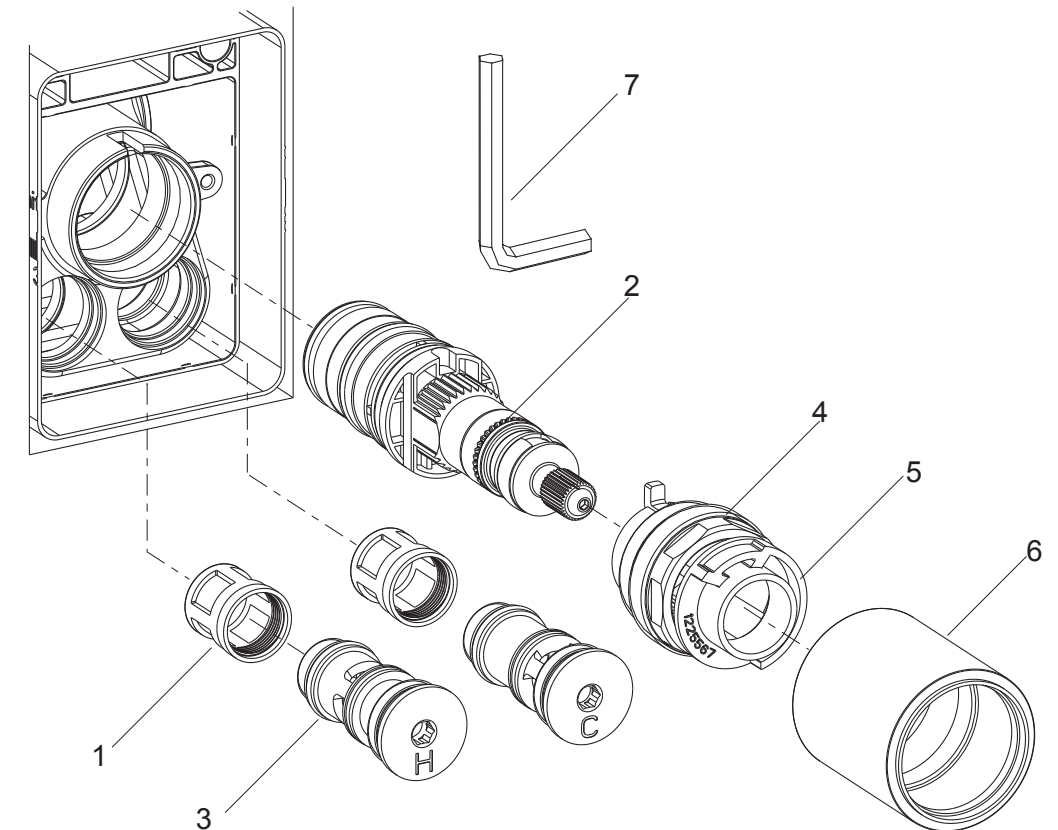
When the temperature is stabilized, don't turn the cartridge spindle, reinstall the handle kit.

CARE AND MAINTENANCE

Clean Filters And Thermostatic Cartridge

Very hard water can obstruct the filters(1) on insert assy and thermostatic cartridge(2) filters, reduce the flow of water. Please clean the cartridge as follows:

Shut off the water supplies of the faucet, ensure the flow valve closed.



Turn counterclockwise with the hex wrench(7) to uninstall the insert assy(3); Flush and check the filter whether is intact, if damaged replace it; Assemble the filter and insert assy. Tighten the insert and filter kits clockwise with the hex wrench to the valve. **Note:** Make sure that all the parts could not be lost.

Then proceed to reinstall the thermostatic cartridge(2). The cartridge is critical part, please be careful.

Make sure the handle aligned with the number 37 on faceplate before your action. Remove the temperature handle kit(Detailed in installation instruction of trim kit). Unscrew the escutcheon(6). Unscrew the valve nut(4), take off the fixed stop kit(5) and the nut. Remove the thermostatic cartridge cautiously. Clean the thermostatic cartridge by soaking it in warm vinegar.