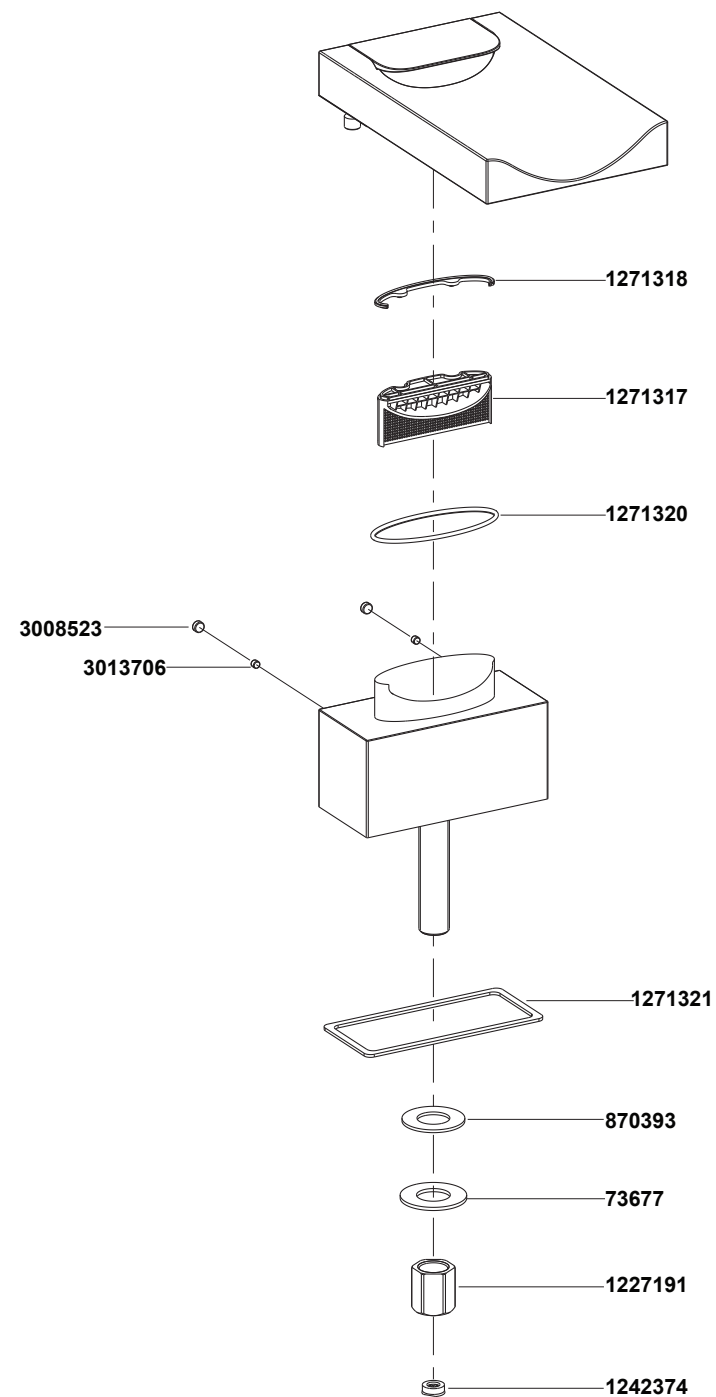


99874T-9 Deck Mount Thermostatic Bath Shower Faucet



**Color code must be specified when ordering.

99874T-9 Deck Mount Thermostatic Bath Shower Faucet

BEFORE YOU BEGIN

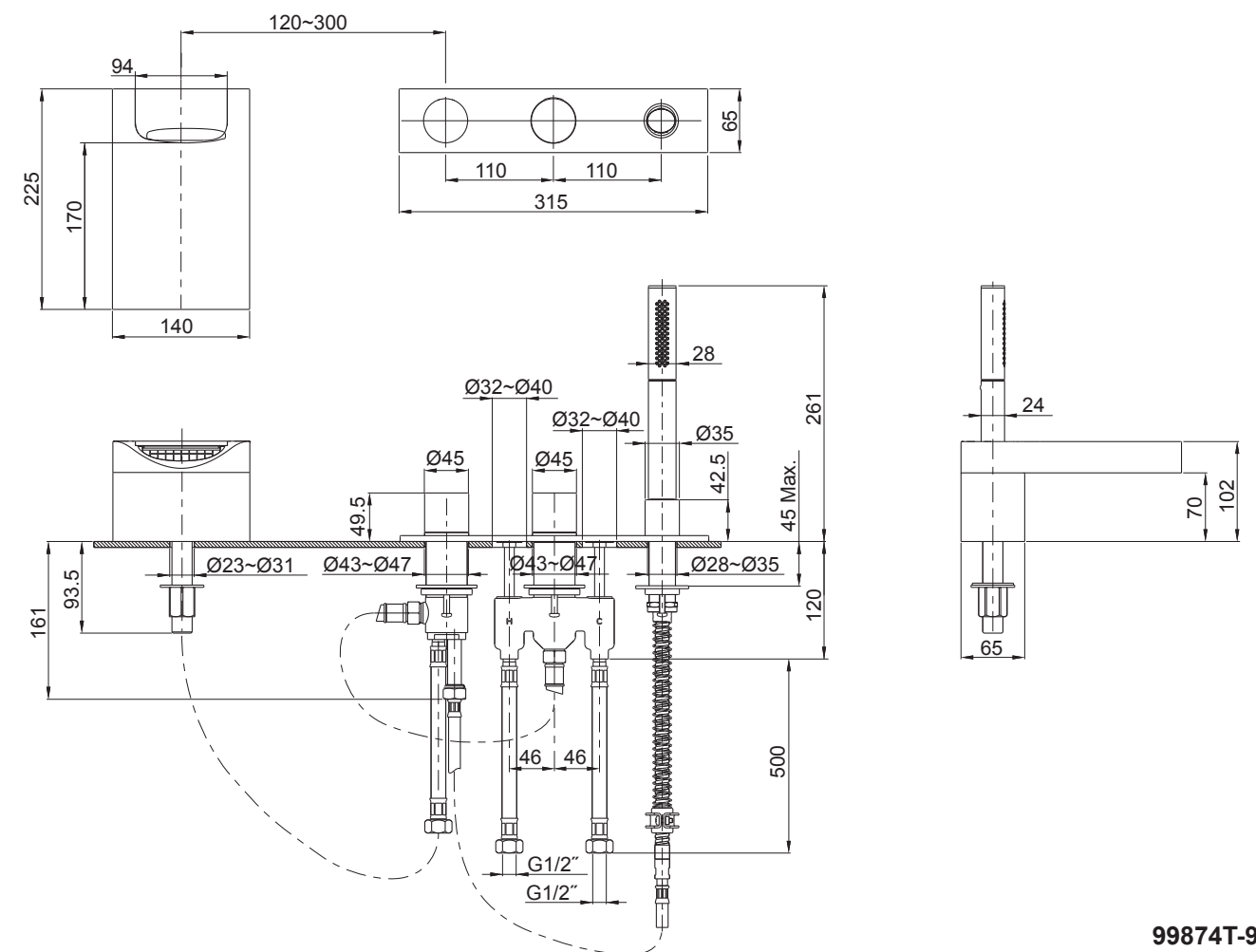
All information is based on the latest product information available at the time of publication. Kohler Co. reserves the right to make changes in product characteristics, packaging, or availability at any time without notice.

Please leave these instructions for the consumer. They contain important information.

OPERATION CONDITION

1. Minimum supply pressures: 0.5bar.
2. Recommended supply pressures: 3bar on hot and cold water.
3. If supply pressure higher than 5bar: install a pressure reducer.
4. Pressure difference between hot and cold supply: 2bar maximum.
5. Hot supply water temperatures, minimum: 50°C, maximum: 70°C.
6. Recommended hot supply water temperature: 60°C (energy-saving).
7. Setting range, approximately: 20°C to 49°C.
8. Safety stop at: 37°C.

ROUGH-IN DIMENSIONS



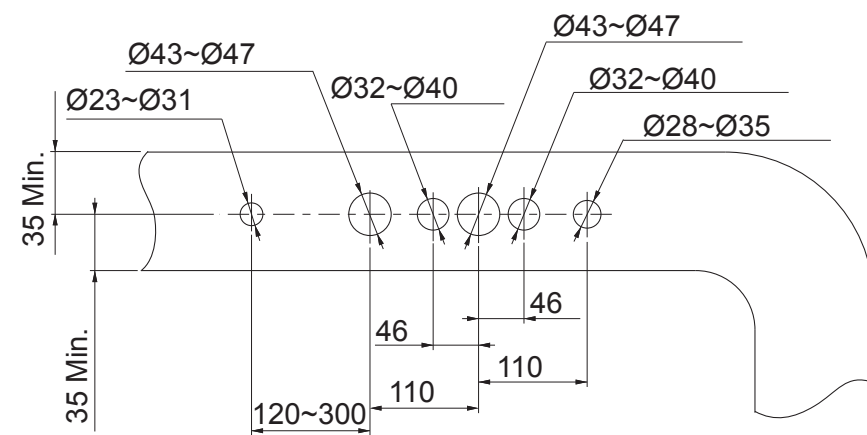
99874T-9

HANDLE OPERATION

Turn the diverter handle to choose the spout or handshower model.

The temperature is set by slowly turning the temperature selector(right-hand handle). Turn it clockwise for lower temperature; Turn it counter-clockwise for higher temperature. For safety reason, there is a stop to limits temperature. To get a higher temperature, push the button and continue turn the temperature selector.

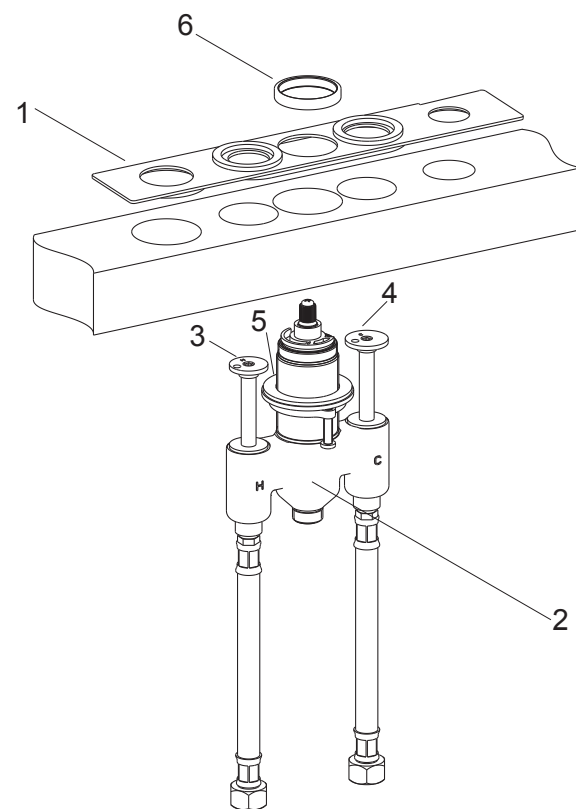
INSTALLATION



How to Install the Valve Assy

If possible, install this faucet before installing the bath tub. Flush the water supply pipes thoroughly to remove debris.

Drill holes according to the dimensions at the correcting position of the tub fringe.

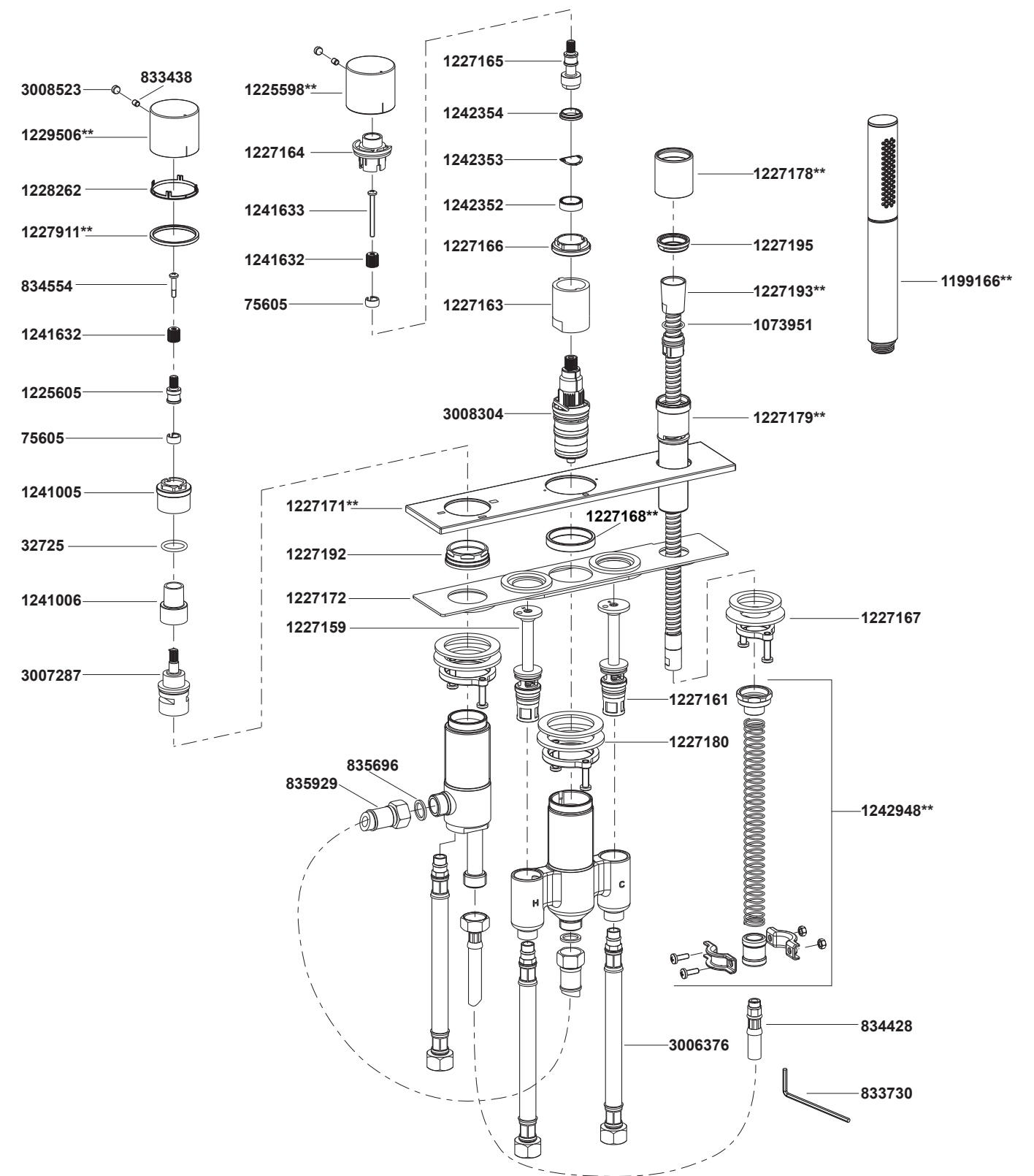


Put the base plate(1) onto the deck.

Insert the temperature valve assembly(2) into the mounting hole from underside of the tub. The check valve assy(3,4) with mark "H" should be on the left.

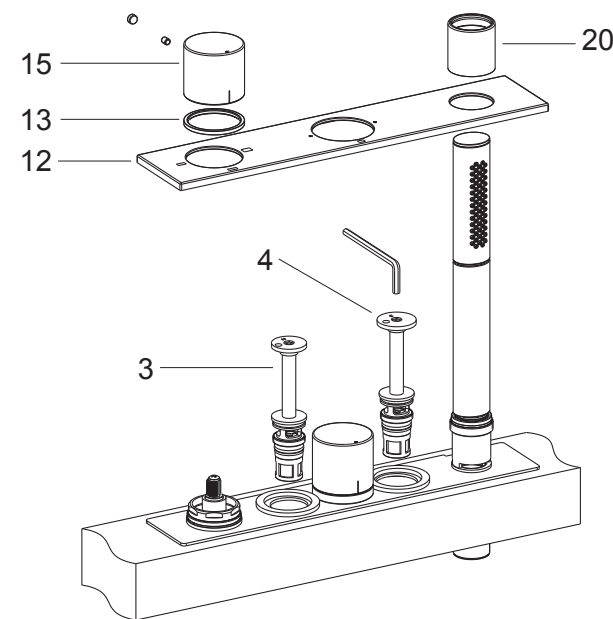
Tighten the nut(6), install the fixture kit(5).

99874T-9 Deck Mount Thermostatic Bath Shower Faucet



**Color code must be specified when ordering.

CARE AND MAINTENANCE



Clean Filters and Thermostatic Cartridge

Very hard water can obstruct the filters on check valve assy(3, 4) and thermostatic cartridge(38) filter, reduce the flow of water. Please clean the cartridge as follows:

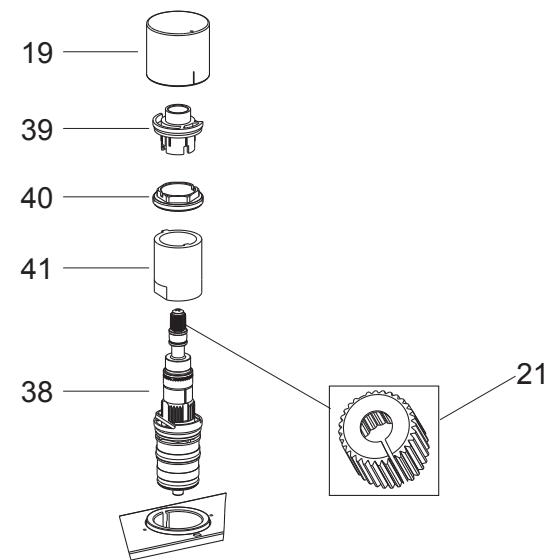
Shut off the water supplies of the faucet, ensure the flow valve closed.

Remove the plug button and screw in the diverter handle. Remove the handle, nut(13), shower base(20) and cover plate(12). Turn counter-clockwise with the hex wrench to uninstall the check valve assy(3, 4); Flush and check the filter whether is intact, if damaged replace it; Assemble the filter and check valve assy. Reinstall all parts. **NOTE:** Make sure that all the parts could not be lost.

Then proceed to reinstall the cartridge. The cartridge(38) is critical part, please be careful.

Make sure the handle align to the number 37 on faceplate before your action. Remove the plug button and screw. Remove the handle(19), stop ring(39). Unscrew the valve nut(40) and spacer(41) by tool. Remove the thermostatic cartridge cautiously. Clean the thermostatic cartridge by soaking it in warm vinegar.

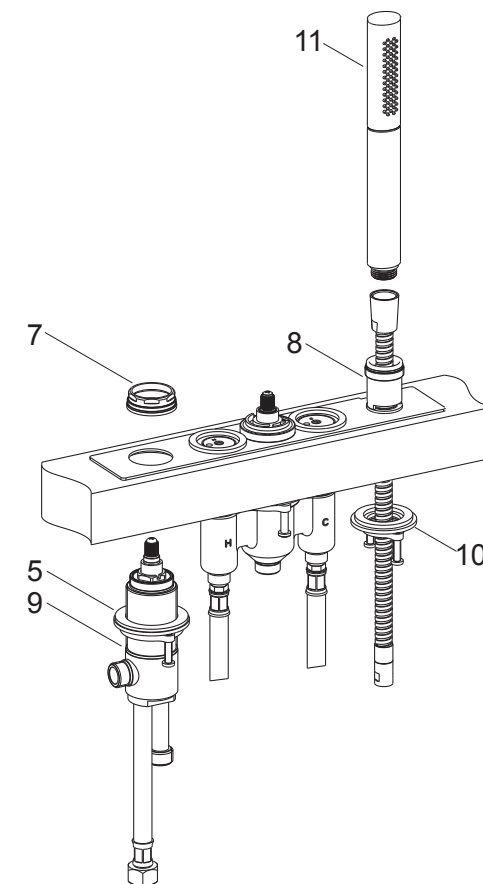
After cleaning, reinstall the cartridge and other parts. **NOTE:** Do not turn the cartridge when reinstall it. If you turned it without carefulness, you should adjust it and be sure that the notch(21) of adapter align with number '37'.



CLEANING INSTRUCTIONS

All Finishes: Clean the finish with mild soap and warm water. Wipe entire surface completely dry with clean soft cloth. Many cleaners may contain chemicals, such as ammonia, chlorine, toilet cleaner etc, which could adversely affect the finish and are not recommended for cleaning.

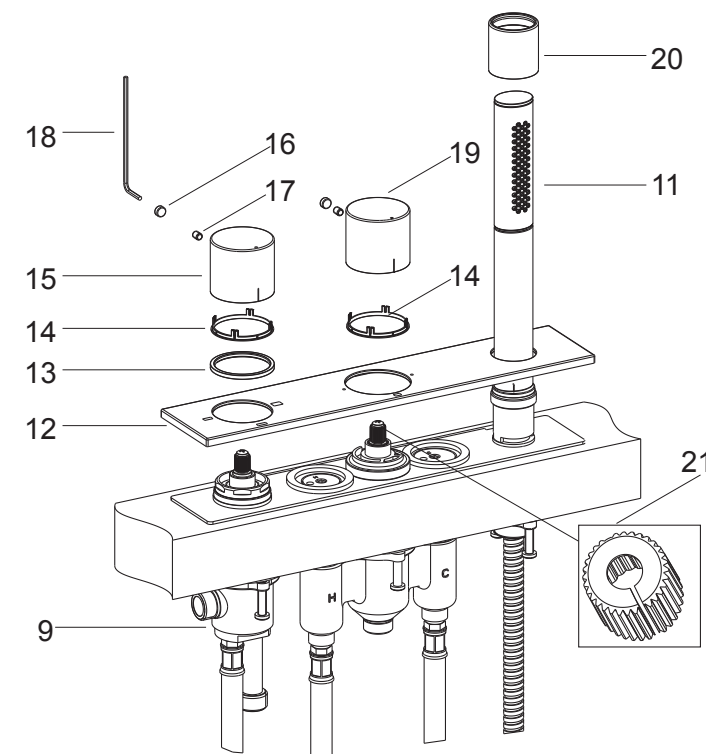
Do not use abrasive cleaners or solvents on Kohler faucets and fittings.



Insert the diverter valve assembly(9) from underside of the tub. Tighten the nut(7), install the fixture kit(5).

Insert the shank kit(8) into the mounting hole. Tighten the fixture kit(10) from underside of the tub. Connect the handshower(11) into the shank kit.

③



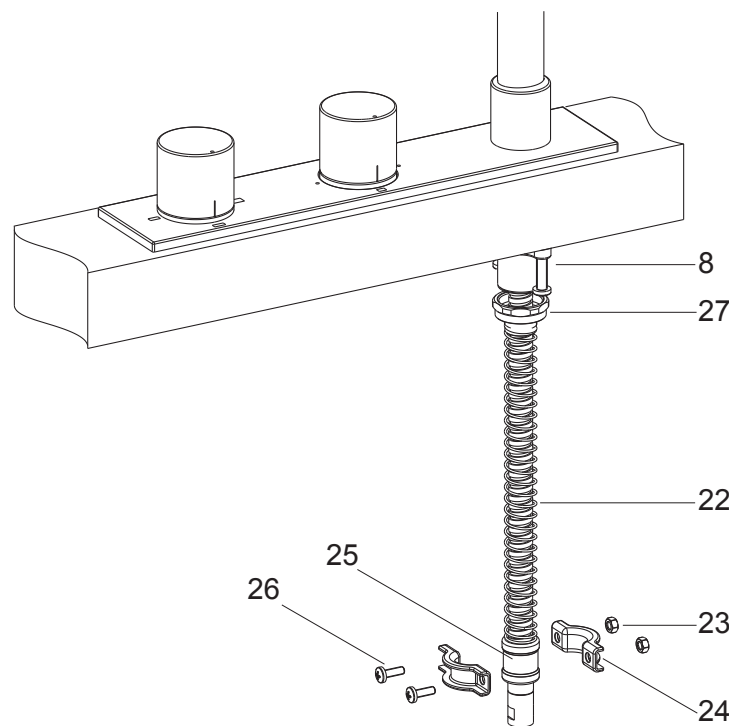
How to Install the Handle

Put the cover plate(12) onto the base plate(1). Press the cover plate closed to the bath tub by hand. Tighten the nut(13) and shower base(20) to fix the cover plate.

Before install the handle kits, make sure the notch of adapter(21) on the temperature valve assy(2) align to the number '37' on the cover plate. The spline of the diverter valve assembly(9) have three gears, it should be in the middle gear.

Install the handle kits(15,19) with washers(14) on the valves. Make sure the mark of the temperature handle(19) align with the number 37, the mark of the diverter handle(15) align with 'OFF'. Tighten the setscrews(17) in place with a hex wrench(18). Press plug buttons(16) into the hole.

④

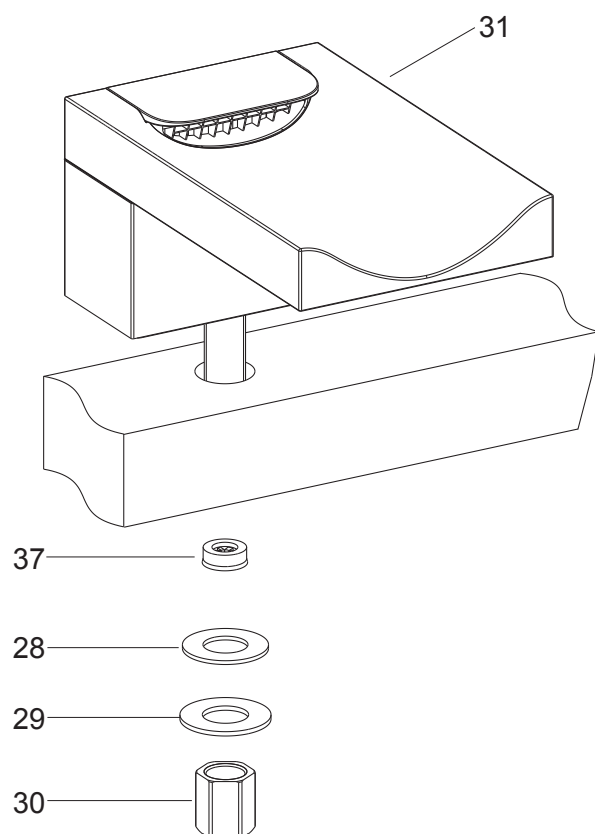


How to Install the Spring

Tighten the nut(27) through the shower hose(10) onto the shower shank(8). Slide the spring(22) onto the shower hose. Install the gasket(25) on the other hose end.

To ensure the hose pull out and return to original position smoothly, fix the gasket with clip(24), screw(26) and nut(23) in suitable position.

⑤

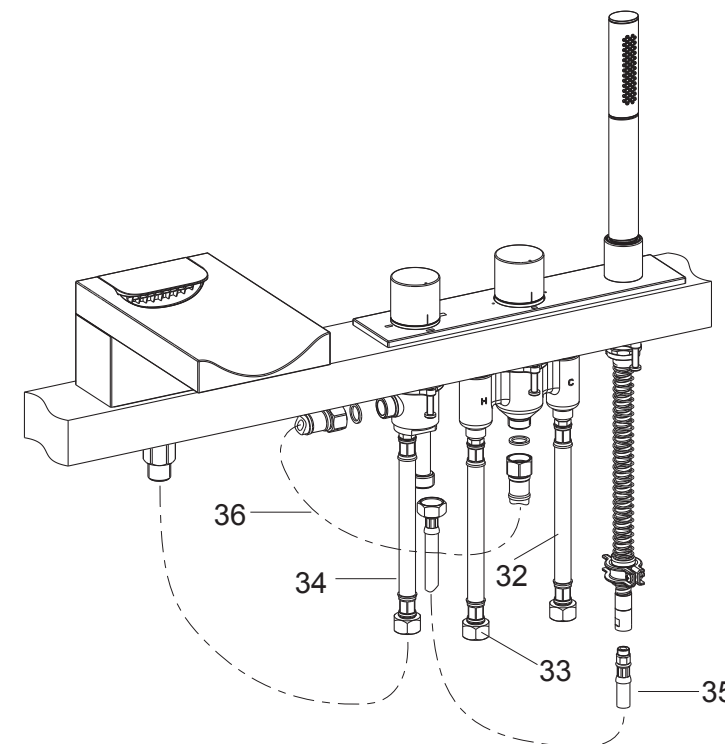


How to Install the Spout

Insert the spout assembly(31) into the hole of tub. From underside of the tub, fit the washer(28) and steel washer(29). Tighten the spout assembly by nut(30).

NOTE: If water pressure is too high, restrictor(37) could be installed into the spout assembly.

⑥



How to Connect the Hoses

Connect the hoses(32, 33) on the temperature valve assy to cold and hot water supplies respectively. Connect the hose(33) with the 'H' mark to hot supply.

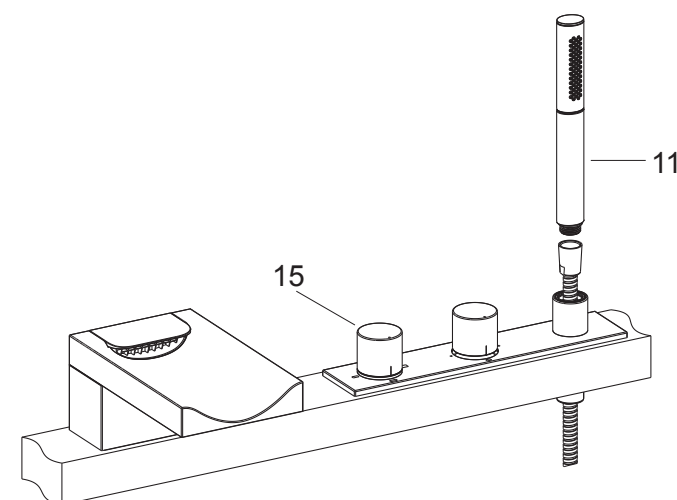
Connect the hose(34) on the diverter valve assy to spout assembly.

Connect the diverter valve assy and the shower hose by the hose(35).

Connect the diverter valve assy and the temperature valve assy by hose(36).

⑦

INSTALLATION CHECKOUT



Ensure that all connections are tight. Ensure that the diverter handle(15) is in the off position.

Turn on the main water supply and drain. Check for leaks, repair as needed.

Remove handshower(11), turn the mark in diverter handle to handshower indication. Run water through the hose to remove any debris. Turn the mark to spout indication. Run water to remove any debris. Turn off the faucet, reinstall the handshower.