



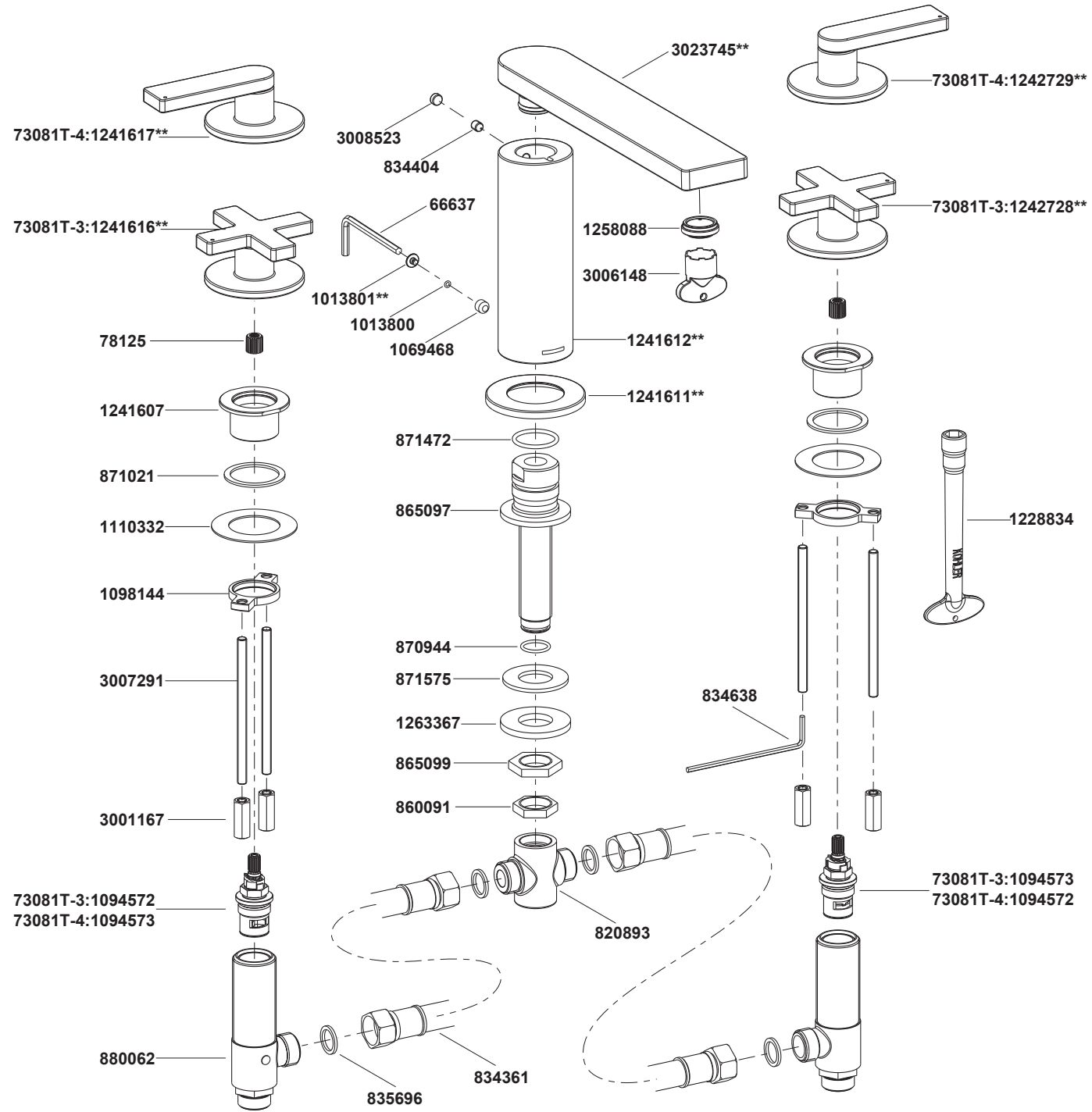
Remove and retain the supply tee(6), the nuts(4, 5) and washer(3) from the shank(1) .

Fit the shank with washer(2) into the center hole of tub. Install the washer(3) and tighten the nut(4, 5) to secure the shank.

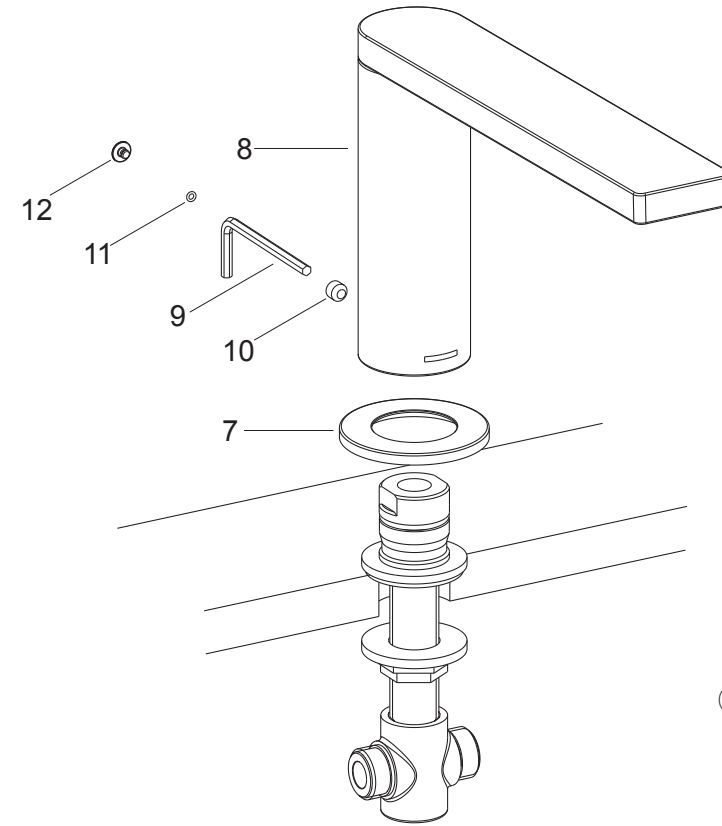
Thread supply tee(6) to the shank of the unit kit until hand-tight.

73081T-3 2 Handle Deck Mount Bath Faucet - Cross Handle

73081T-4 2 Handle Deck Mount Bath Faucet - Lever Handle



****Color code must be specified when ordering.**



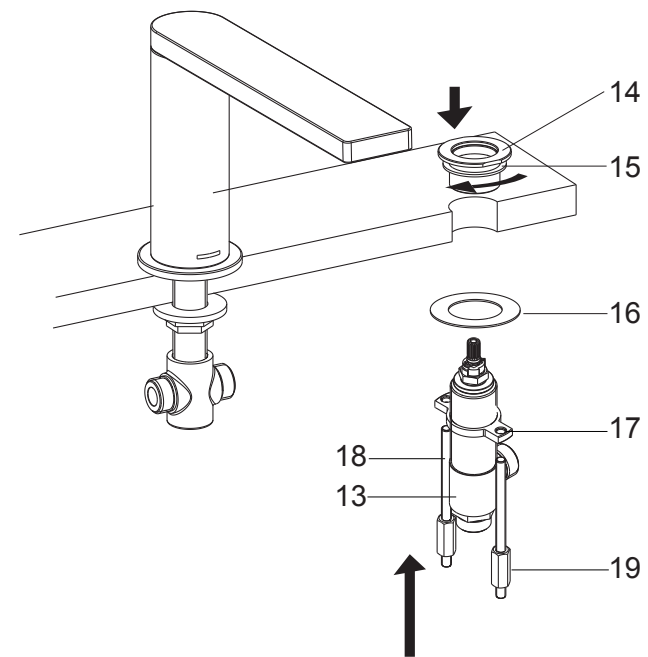
Remove the plug(12) and o-ring(11) in the back of spout. Loosen the screw(10) by hex wrench(9).

Install the escutcheon(7) on the shank, contact the deck or bath tub rim.

Install the spout(8) on the escutcheon,
and make it against the escutcheon.
position the spout, tighten the screw by
hex wrench.

Place the o-ring on the plug, Press the plug into the hole.

②



How to Install the Side Bodies and Handles

Remove the escutcheon base(14) and rubber washer(15) from the side body(13).

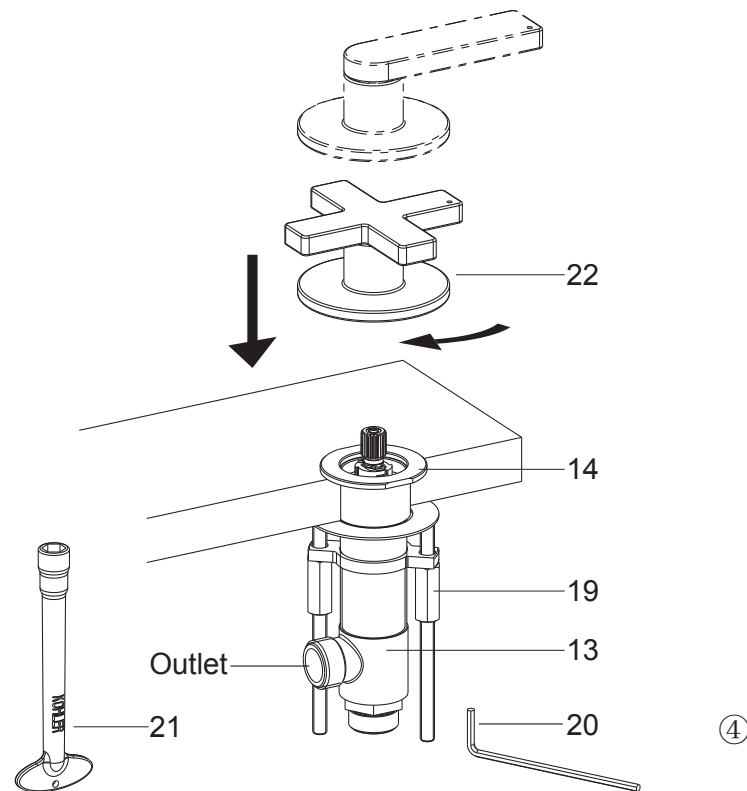
Be sure the steel washer(16) and the threaded ring(17) on the valve body. Keep the wrench holes of the studs(18) facing downwards, thread them onto the threaded ring.

Insert the side body into the mounting hole from the underside of the tub.

NOTE: The side body with red mark should be installed on the left.

③

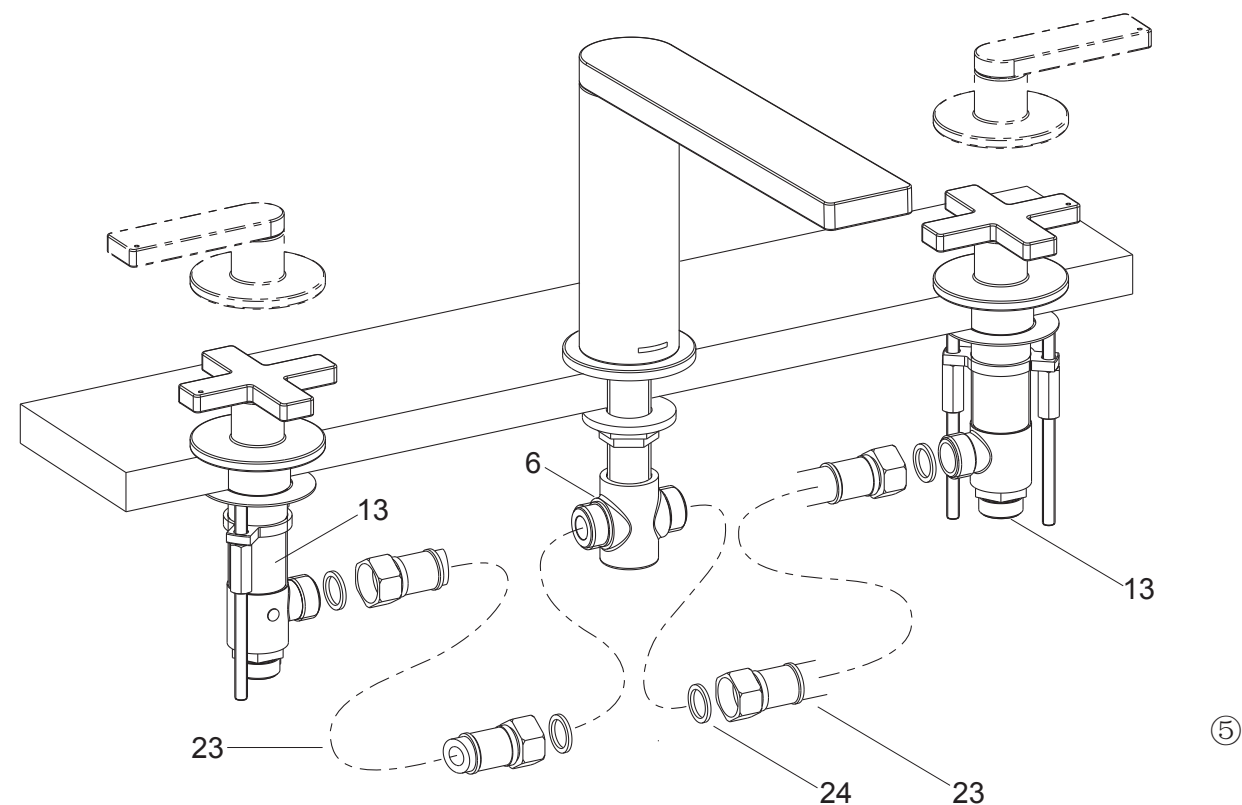
Put the rubber washer(15) into the bottom groove of the escutcheon base. Tighten the escutcheon base onto the valve body.



Adjust the outlet of side body to connect hose easily. Tighten stud with 3mm hex wrench(20) to secure the side body. Tighten the nut(19) by the tool(21).

Install the handle kits(22) onto the escutcheon base. **NOTE:** The valve body with red dot should be installed on the left when facing the front of the faucet, and the valves are in the closed position before installing them.

④

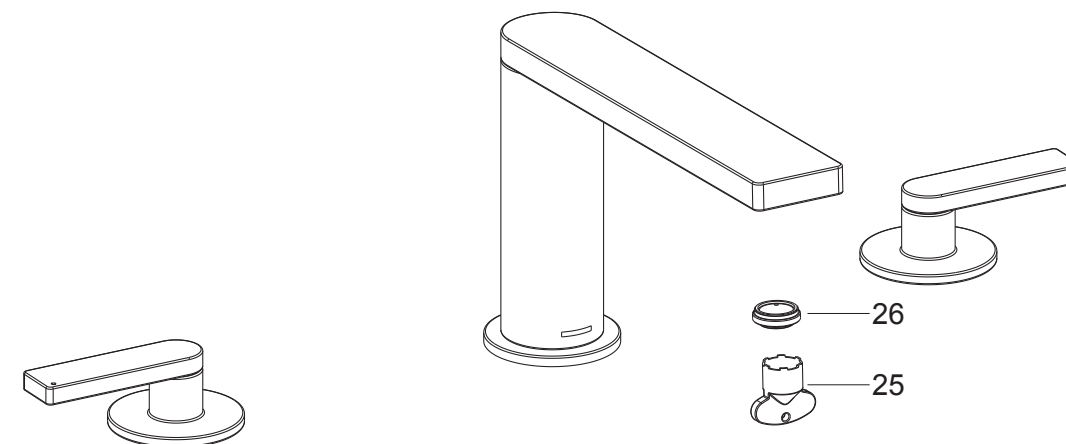


How to Connect the Hose

Put the washers(24) into the end of the hoses(23). Connect the supply tee and the side bodies(13) by hoses.

⑤

INSTALLATION CHECKOUT



Ensure that all connections are tight. Ensure that the handle is in the off position.

Open the drain. Turn on main water supply and check for leaks. Repair as required.

Remove aerator(26) by key(25). Turn the faucet handle on and run hot and cold water through spout for about one minute to remove any debris.

Remove any debris from aerator. Shut faucet off and reinstall aerator.

CLEANING INSTRUCTIONS

All Finishes: Clean the finish with mild soap and warm water. Wipe entire surface completely dry with clean soft cloth. Many cleaners may contain chemicals, such as ammonia, chlorine, toilet cleaner etc, which could adversely affect the finish and are not recommended for cleaning.

Do not use abrasive cleaners or solvents on Kohler faucets and fittings.