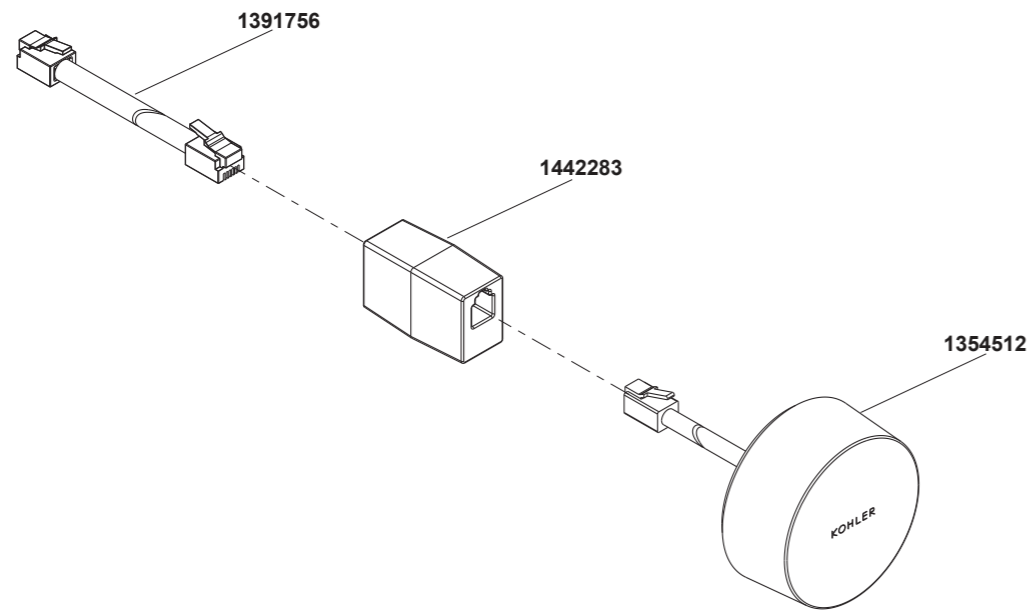


**23777T Dongle**



\*\*Color code must be specified when ordering.

**23777T Dongle**

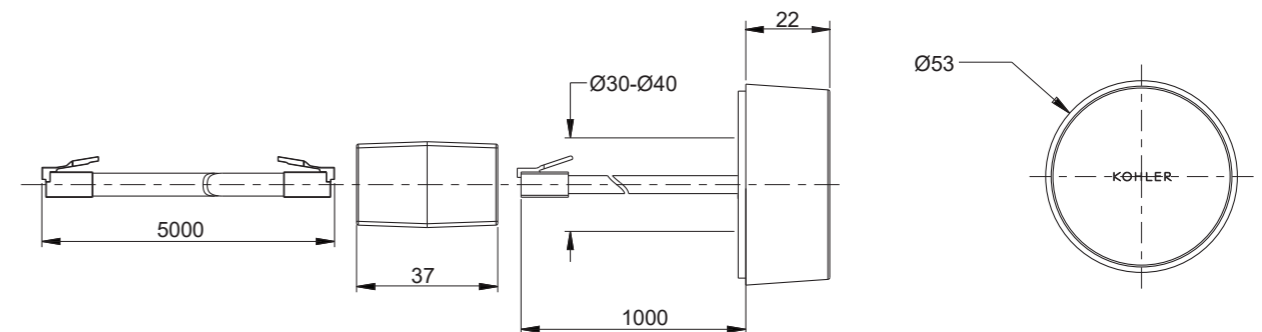
**BEFORE YOU BEGIN**

All information is based on the latest product information available at the time of publication. Kohler Co. reserves the right to make changes in product characteristics, packaging, or availability at any time without notice. Please leave these instructions for the consumer. They contain important information.

**NOTES:**

1. Observe all plumbing, electrical, and building codes.
2. Isolate the electrical and water supplies before commencing installation.
3. DO NOT modify or extend the cables supplied with the product.
4. When possible, install the valve prior to installing the dongle.
5. Ambient Temperature: 1°C - 40°C; Maximum Relative Humidity: 95% non-condensing.

**ROUGH-IN DIMENSIONS**



**INSTALLATION**

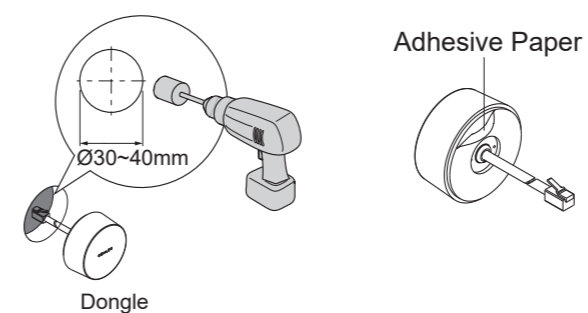
**Install the Dongle**

Through the dongle, terminal devices (such as mobile phone, ipad) can be interconnected with shower products, users can turn on/off the shower and set water temperature and preset bath fill in APP.

Decide a suitable location for the dongle. It can be installed within 6 meters away from the valve (Cable-1m, extension line-5m). **NOTES:** There should be no metal barriers around the dongle. Drill a hole according to the dimensions to install dongle. Route the dongle cable through the hole and connect it to valve.

Use the cleaning wipe to clean the surface around mounting hole. Remove the paper from the adhesive back. Install the dongle in position and push firmly.

**NOTES:** The dongle cannot be adjusted when it is fitted. Make sure to test fitment before removing the tape.



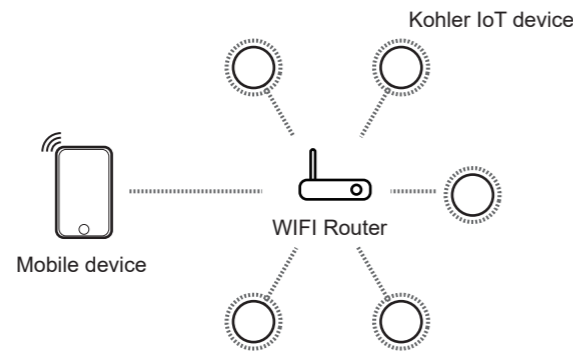
# KOHLER KONNECT QUICK START GUIDE

## Quick Wireless Connection

Connect Kohler IoT device to power supply, make sure it is under normal status.

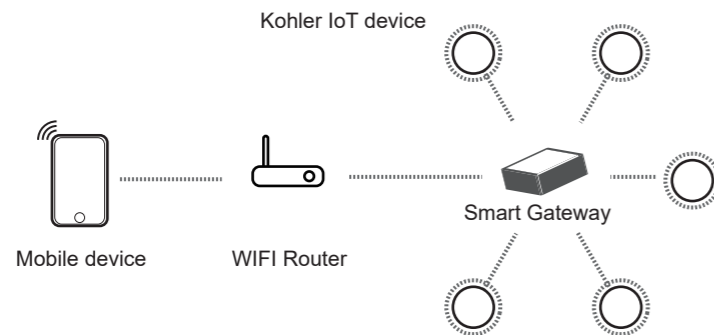
Kohler IoT device supports App control/set up. Please scan QR code below or visit Kohler website to understand more about latest Kohler intelligent kitchen and bath experiences. Kohler intelligent IoT device provides multiple connection methods, includes WIFI, Kohler BOX etc. to meet different scenarios.

### WIFI CONNECTION



Turn on Kohler App, setup Kohler account and then login. Click [Add] on [device] page, and then follow App instruction, add your Kohler IoT device. Under this mode, the Kohler IoT device shall be able to connect by local WiFi or mobile network.

### SMART GATEWAY CONNECTION



Turn on Kohler App, setup Kohler account and then login. Click [Add] on [device] page, and then follow App instruction, add your Kohler IoT device. Under this mode, the Kohler IoT device shall be able to connect by local WiFi or mobile network.

Mobile device is capable to connect with Kohler IoT devices via WIFI or mobile network.



Scan QR Code to download  
Android or iOS App

In order to learn more about Kohler IoT product function. Please visit: [www.kohler.com.cn](http://www.kohler.com.cn)

# CLEANING INSTRUCTIONS

All Finishes: Clean the finish with mild soap and warm water. Wipe entire surface completely dry with clean soft cloth. Many cleaners may contain chemicals, such as ammonia, chlorine, toilet cleaner etc. which could adversely affect the finish and are not recommended for cleaning.

Do not use abrasive cleaners or solvents on Kohler faucets and fittings.

## Statistics of Contents of Toxic or Hazardous Substances or Elements

Part name	Toxic or Hazardous Substance or Elements					
	Lead (Pb)	Mercury (Hg)	Cadmium (Cd)	Hexavalent Chromium (Cr(VI))	Polybrominated biphenyls (PBB)	Polybrominated Diphenyl Ethers (PBDE)
Dongle	×	○	○	○	○	○
Connection Assy	×	○	○	○	○	○

○: Indicates that the substance in the material composition is below the high limits of the current requirements in GB/T 26572.

×: Indicates that at least one of the homogeneous substance in the material composition is above the high limits of the current requirements in GB/T 26572.

Note: the information provided is based on the supplier data and Kohler inspection results. The product is designed not to hurt the environment. Under current technology, all hazardous materials have been used in the smallest amounts possible. Kohler will strive to reduce the use of these hazardous materials used in this product.



The product "service life for environment protection" is 10 years; Kohler Company will specify product service life based on product characteristics. The product "service life for environment protection" is only effective when the product is used as described in the product specification.