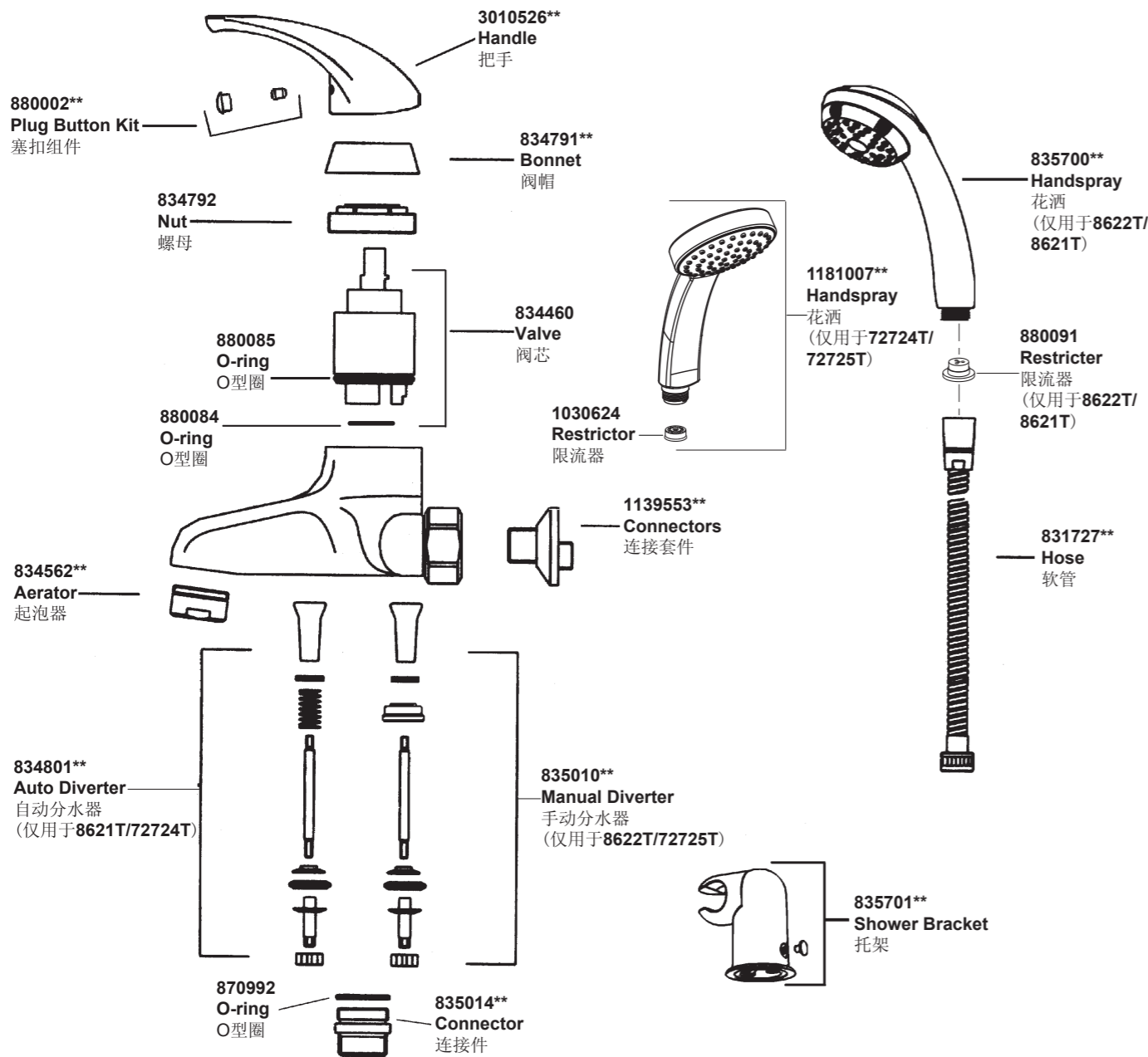


8621T 8622T 72724T 72725T 挂墙式浴缸花洒龙头



**订购时请说明颜色编号
**Color code must be specified when ordering

8621T 8622T 72724T 72725T 挂墙式浴缸花洒龙头

安装之前

所有的资料是按最新出版的产品资料编写而成。科勒公司保留任何时候不经通知即可改变产品特性、包装或产品可供类型的权利。

说明书包括重要的安装、保养及清洁方面的内容，请把这些资料交给用户阅读。

- 注意事项：**
- 一定要先彻底冲洗供水管以清除管道中的杂质。
 - 切换器正常工作的最小压力为0.05MPa(0.5bar)。
 - 花洒最高工作压力：0.5MPa(5bar)。水压超过0.5MPa(5bar)须安装减压阀。花洒最高工作温度及环境温度：60°C。请特别注意花洒同花洒连接的臂管须远离浴霸，否则可能损坏花洒及其密封件，甚至对使用者造成伤害。

BEFORE YOU BEGIN

All information is based on the latest product information available at the time of publication. Kohler Co. reserves the right to make changes in product characteristics, packaging, or availability at any time without notice. Please leave these instructions for the consumer. They contain important information.

- NOTE:**
- Flush the water supply pipes thoroughly to remove debris.
 - The minimum inlet water pressure for the diverter is 0.05MPa(0.5bar).
 - The highest working pressure for handspray is 0.5MPa(5 bar). If it exceeds 0.5MPa(5 bar), a pressure reducer is needed. The highest water and environment temperature is 60°C. Please keep handspray, showerhead and the shower arm away from heater, or it may become damaged and cause injury to the user.

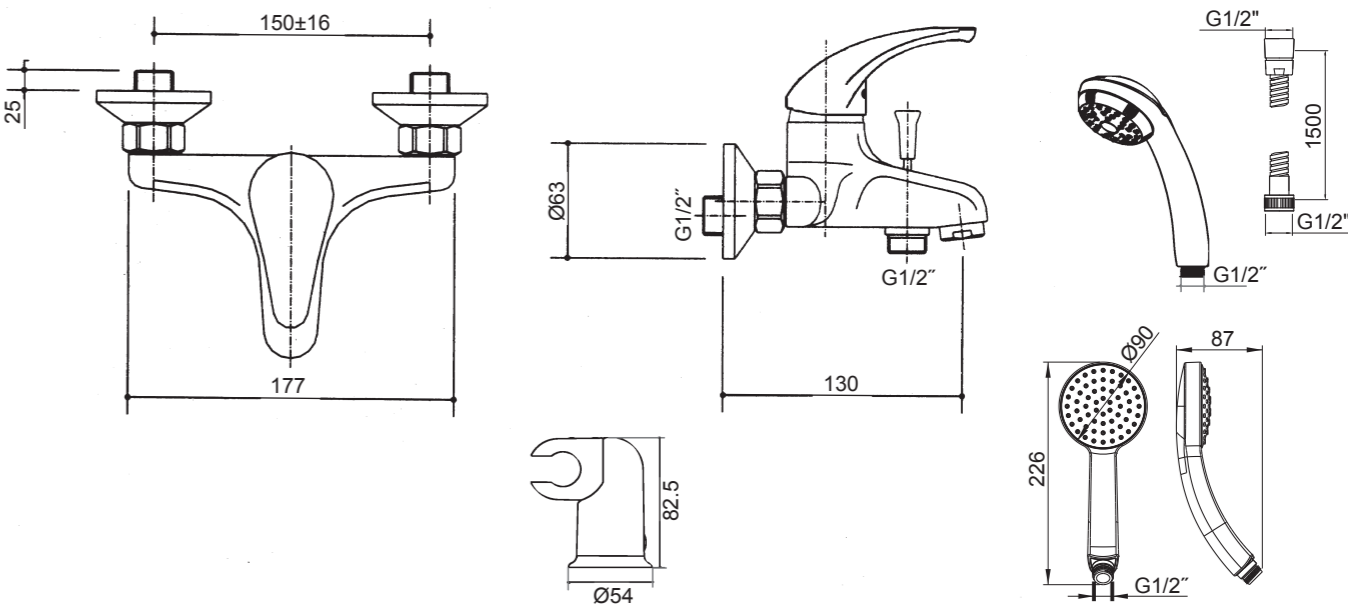
使用说明

将手柄轻轻提起，向左转为热水，右转为冷水。

HANDLE OPERATION

Lift the handle gently. Turn left for hot water, right for cold water.

安装尺寸



安装步骤

安装水龙头

为使安装顺利，G1/2”内螺纹管道配件(1)应已装好，预留150mm的间距，保持水平，不要凸出墙面。

彻底冲洗供水管，以清除管路中的杂质。

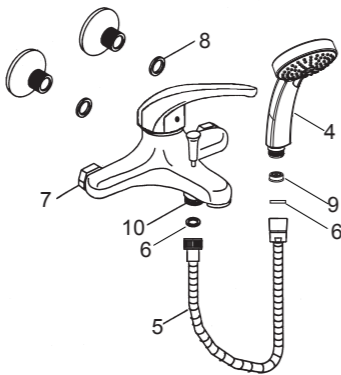
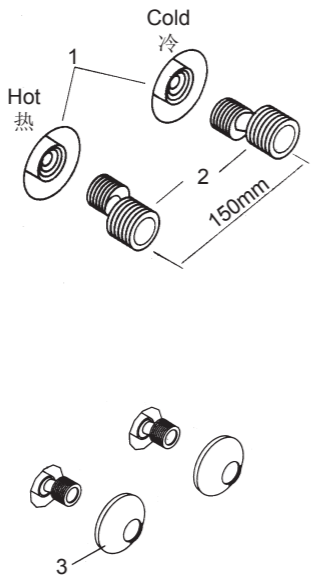
使用合适的螺纹密封膏，安装两个接头(2)到冷热供水管。保持两个接头中心到中心的距离150mm，并调整到同一水平线上。

把装饰罩(3)旋入接头, 紧贴墙壁。

把密封垫片(8)放入水龙头的螺母内。把螺母(7)穿过接头(2), 并拧紧。

注意：在锁紧螺母时，须用带状扳手或软布垫在普通扳手和螺母之间，以保护电镀表面。

垫片(6)应安装在淋浴软管(5)的两头。限流器(9)塞入花洒(4)进水口。把淋浴软管一头接到水龙头出口(10)，一头接花洒。



INSTALLATION

Install The Faucet

To perform installation, installer must provide G1/2” female supply fittings(1), space 150mm apart, level and not extend beyond finished wall surface.

Flush the water supply pipes thoroughly to remove debris.

Install the two offset connectors(2) into the HOT and COLD supply pipes. Use appropriate thread sealants on pipe threads. Adjust the center-to-center distance between the connectors to 150mm and level.

Thread the escutcheons(3) onto the connectors so that the escutcheons contact the finished wall.

Put washers(8) into supply nuts(7) of the faucet. Thread the faucet supply nuts onto the connectors(2) and tighten.

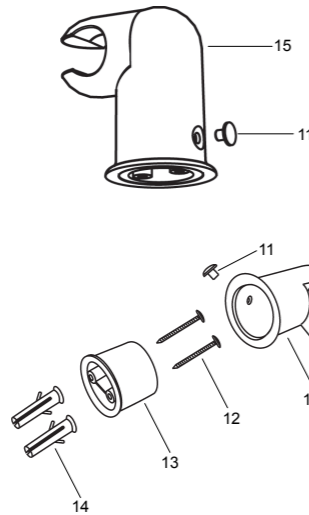
NOTE: When tighten the nut, use strap wrench or soft cloth between product and regular wrench to protect the finish.

Washers(6) provided with hose(5) must be installed in each end. Put the restrictor(9) into the handspray(4) inlet. Connect shower hose to faucet shower outlet(10) and handspray.

如何安装托架

先将固定销(11)从托架(15)上扣下, 把塑料套(13)取出。将托架内腔中的自攻螺钉(12)和胀塞(14)取出。在淋浴软管可及的高度，选择一个安装托架的位置。

在墙壁上标上安装托架底板位置的记号，按记号钻两个洞。将胀塞插入洞中，然后按照图示将自攻螺钉通过塑料套旋入胀塞中，用螺丝刀拧紧。将托架内壁的凹槽对准塑料套的凸台插入，然后将固定销按入托架的固定孔中。把花洒挂在托架上。



How To Install The Shower Bracket

Take off the locking pin(11) from the bracket(15). Take out the self-tapping screws(12) and anchors(14) from the inside of the bracket by pulling out the plastic sleeve(13). Mark bracket base mounting hole location on the wall.

Drill two holes in the finished wall as required. Press the anchors into the holes and screw the self-tapping screws into the anchors through the sleeve. Tighten them by screwdriver. Aline the bugle of the bracket and the slot of the sleeve. Slide the bracket onto the sleeve and insert the locking pin into the hole of bracket and sleeve.

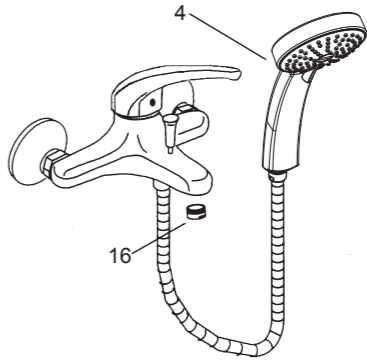
安装结果检查

检查并确保所有的衔接处都已拧紧。

确保手柄在“关”的位置。

打开排水系统和主要供水源，检查并修理有漏水的接口。

将起泡器(16)和花洒(4)拆下，打开水龙头的冷热水，让水流出一分钟以清除杂质。检查渗漏，冲洗起泡器，关闭水龙头，重新装回起泡器和花洒。



INSTALLATION CHECKOUT

Ensure that all coupling nuts are tight.

Ensure that the handle is in the off postion.

Turn on the main water supply, and check for leaks. Repair as needed.

Remove the aerator(16) and handspray(4). Run hot and cold water through the faucet for about a minute to remove any debris. Check for leaks. Remove any debris from the aerator assembly. Shut the faucet off, and reinstall the aerator assembly and handspray.

清洗说明

适用于所有加工处理过的表面：以中性肥皂水清洗镀层表面，再以干净的软布彻底擦干整个表面，许多清洁剂，比如氨水、去污粉及洁厕灵等，会对电镀表面造成伤害，切忌使用。

有磨损性的清洁用具或清洁剂也不可使用于科勒牌的水龙头及其配件上。

CLEANING INSTRUCTIONS

All Finishes: Clean the finish with a mild soap and warm water. Wipe entire surface completely dry with clean soft cloth. Many cleaners may contain chemicals, such as ammonia, chlorine, toilet cleaner etc. which could adversely affect the finish and are not recommended for cleaning.

Do not use abrasive cleaners or solvents on Kohler faucets and fittings.