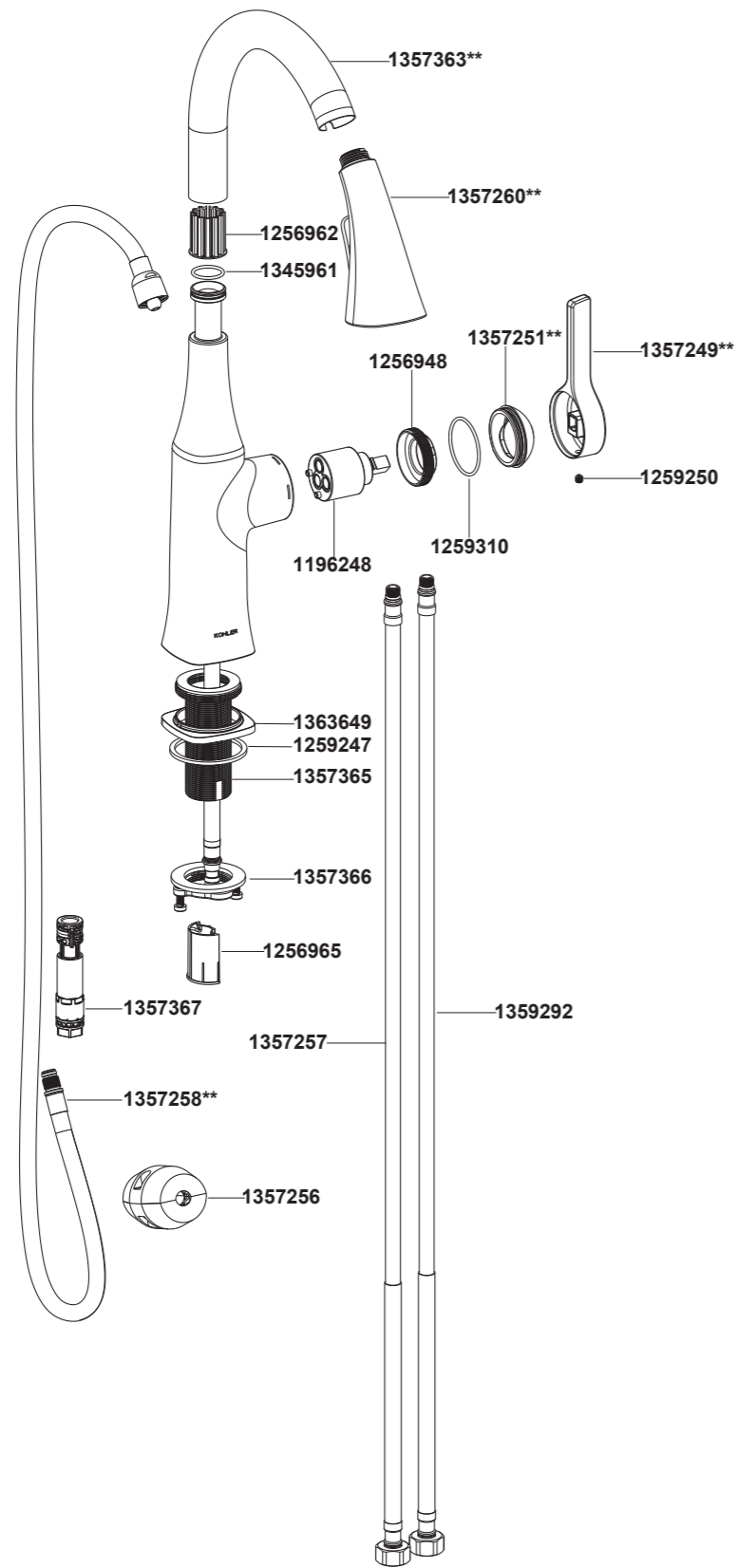


20147T-4 Pull-down Kitchen Faucet



**Color code must be specified when ordering

20147T-4 Pull-down Kitchen Faucet

BEFORE YOU BEGIN

All information is based on the latest product information available at the time of publication. Kohler Co. reserves the right to make changes in product characteristics, packaging, or availability at any time without notice.

Please leave these instructions for the consumer. They contain important information.

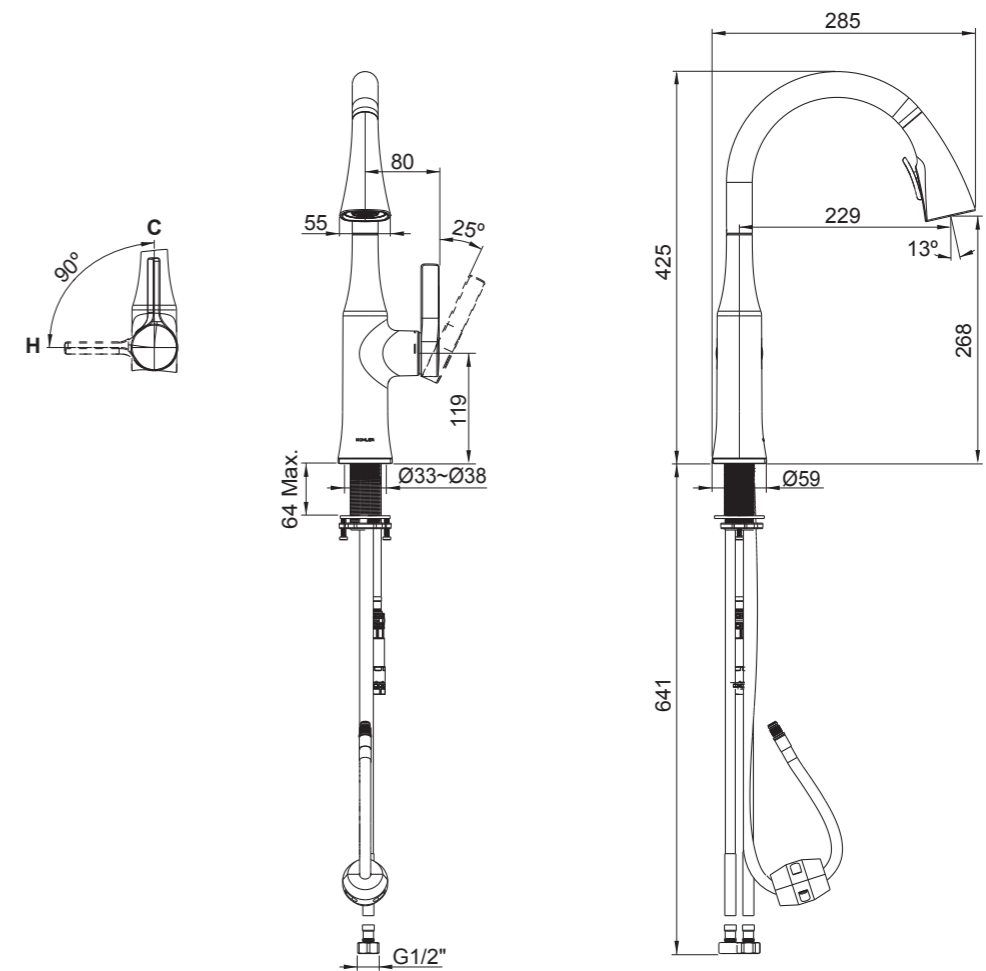
NOTE:

1. Flush the water supply pipes thoroughly to remove debris.
2. For new installations, install the faucet to sink before installing.
3. The highest working pressure for sprayhead is 0.5MPa(5bar). If it exceeds 0.5MPa(5bar), a pressure reducer is needed. The highest water and environment temperature is 60°C. Please keep sprayhead away from heater, or it may become damaged and cause injury to the user.

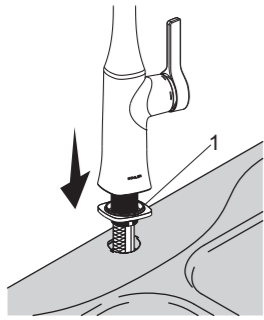
HANDLE OPERATION

Open the handle gently. Turn clockwise for cold water, turn counter clockwise for hot water.

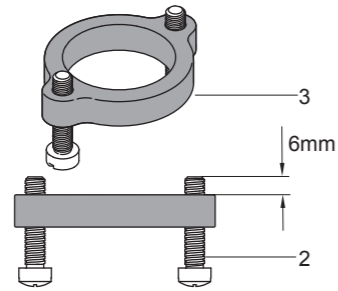
ROUGH-IN DIMENSIONS



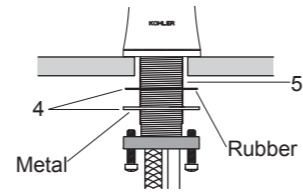
INSTALLATION



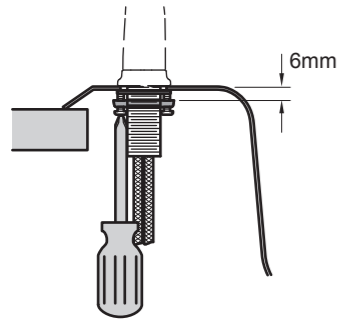
1. Install the gasket(1), foam side down. Install the faucet, the handle is located on the right side.



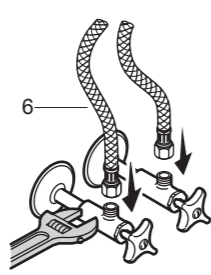
2. Partially thread the screws(2) into the ring(3) until they extend 6mm out the opposite side.



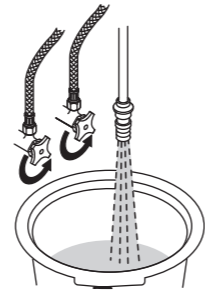
3. Slide the washers(4) onto the shank(5) and thread the ring onto the shank.



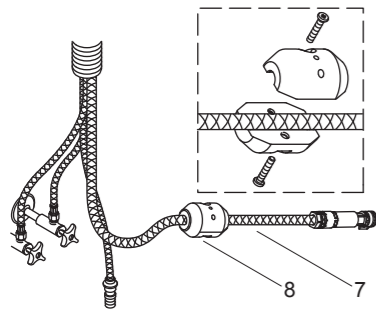
4. Position the screws on the ring onto the shank. Tighten the screws.



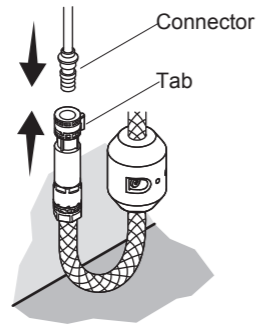
5. Connect and tighten the supply hoses(6). The hose with blue mark is connected to cold water.



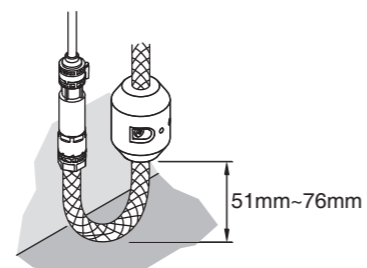
6. Turn on the water supplies. Flush the hot and cold water for about one minute.



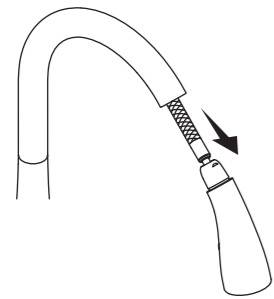
7. Loosely attach the weight(8) to the spray hose(7).



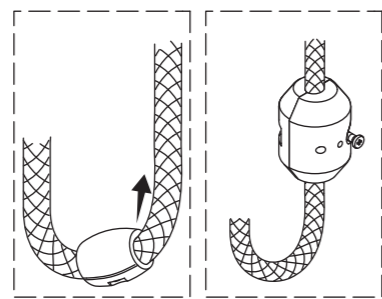
8. Align and connect the spray hose to the connector.



9. Position the weight as shown and tighten securely.



10. Check for smooth operation.

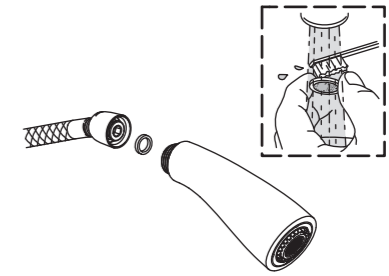


11. Adjust the weight as needed for proper positioning and operation.



Faucet Maintenance:

1. With the water running, rub the nozzles to dislodge debris.



2. To improve the flow, disconnect the sprayhead and clean the screen washer. Reassemble.

INSTALLATION CHECKOUT

Ensure that all coupling nuts are tight. Ensure that the lever handle is in the off position. Turn on the main water supply and drain, and check for leaks. Repair as needed.

CLEANING INSTRUCTIONS

All Finishes: Clean the finish with mild soap and warm water. Wipe entire surface completely dry with clean soft cloth. Many cleaners may contain chemicals, such as ammonia, chlorine, toilet cleaner etc, which could adversely affect the finish and are not recommended for cleaning.

Do not use abrasive cleaners or solvents on Kohler faucets and fittings.

"LEAD FREE" is marked on the back of the faucet signifying its compliance with the United States AB1953