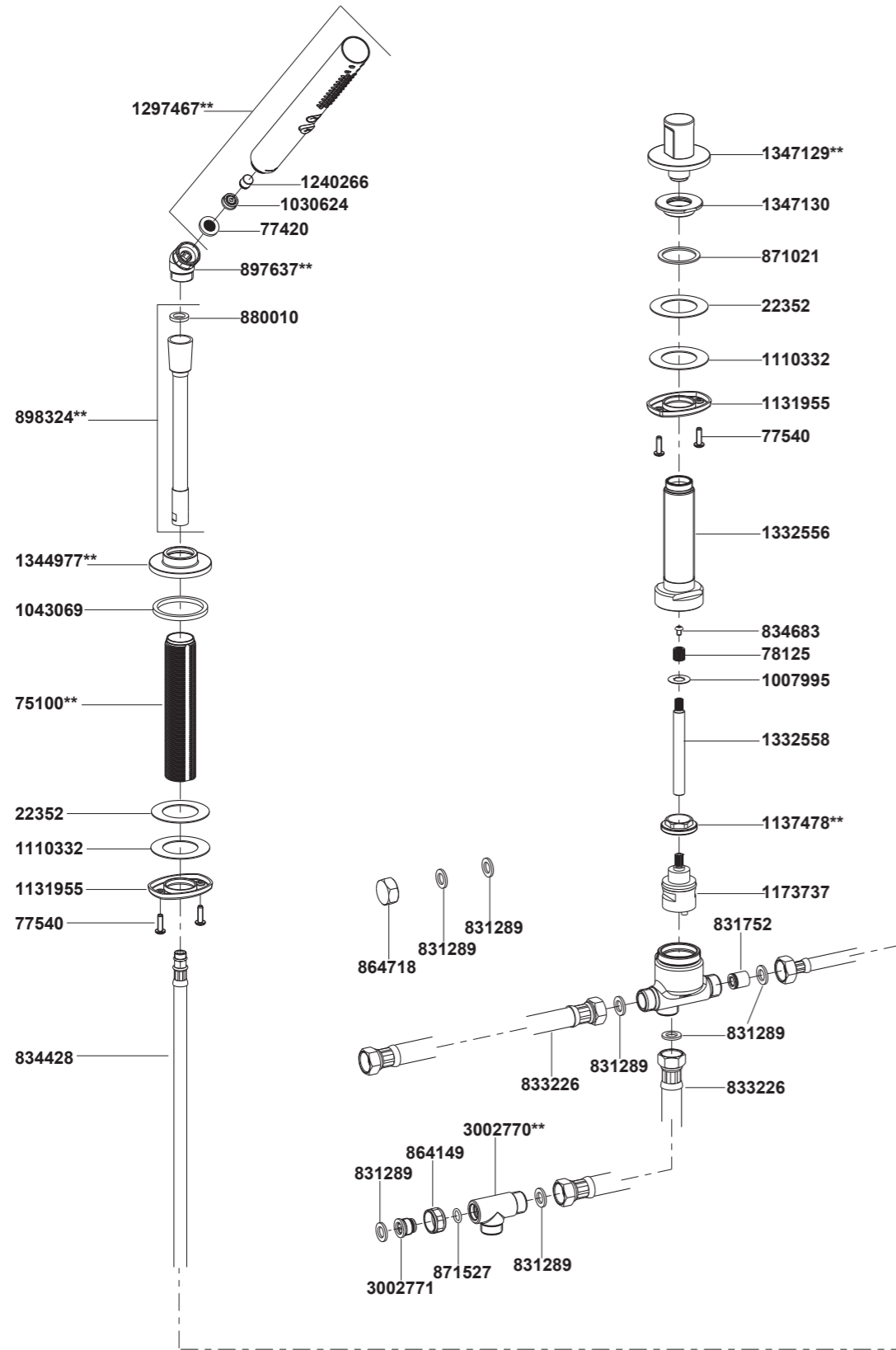


31243T-9 Diverter & Hand Shower(S)



**Color code must be specified when ordering.

31243T-9 Diverter & Hand Shower(S)

BEFORE YOU BEGIN

All information is based on the latest product information available at the time of publication. Kohler Co. reserves the right to make changes in product characteristics, packaging, or availability at any time without notice.

Please leave these instructions for the consumer. They contain important information.

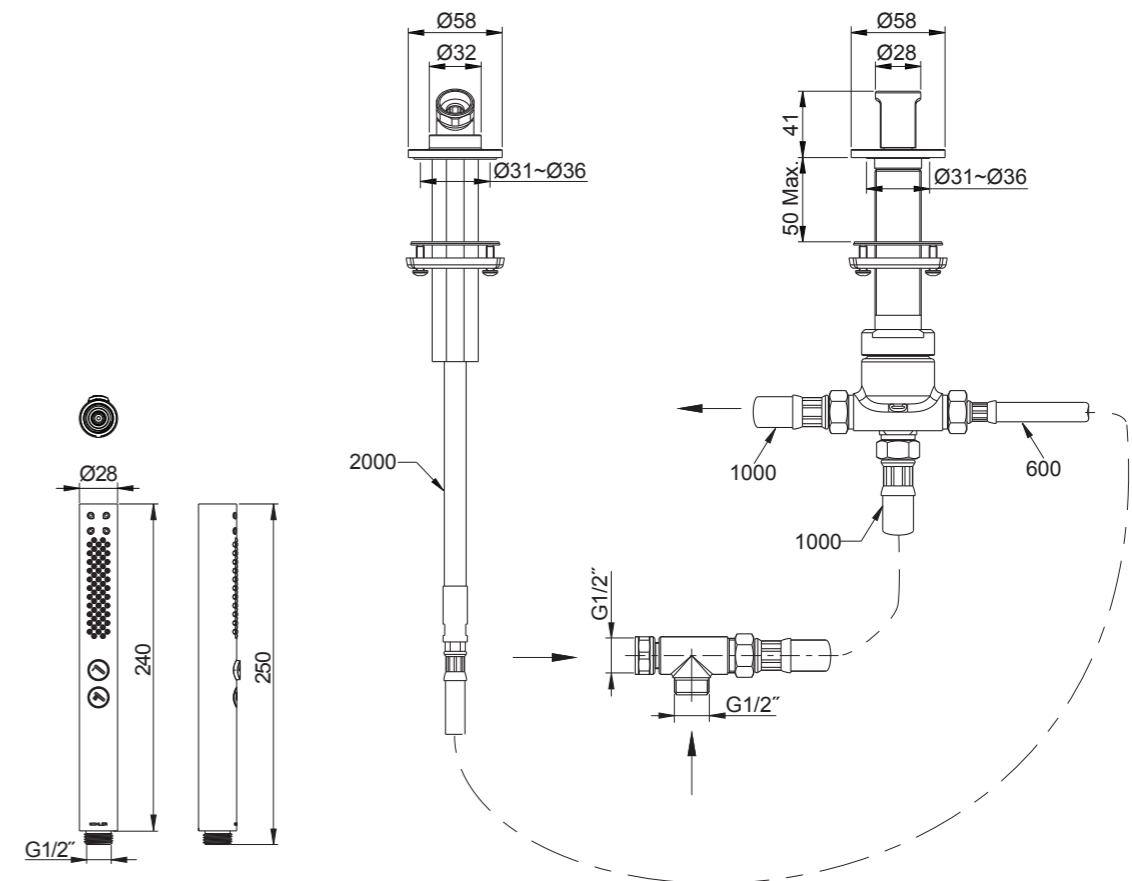
NOTES:

1. Shut off the main water supply.
2. Carefully read entire instructions before beginning installation.
3. Observe local plumbing codes.
4. This faucet has switching function only. It must work with a bath faucet (purchased separately) that has both on/off and hot/cold mixing control.
5. The highest working pressure for handshower is 0.5MPa(5bar). If it exceeds 0.5MPa(5bar), a pressure reducer is needed. The highest water and environment temperature is 60°C. Please keep handshower, showerhead and shower arm away from heater, or it may become damaged and cause injury to the user.

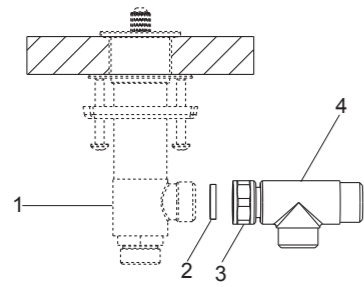
HANDLE OPERATION

Turn diverter handle clockwise for bath spout, turn counter-clockwise for handshower, middle position for both.

ROUGH-IN DIMENSIONS



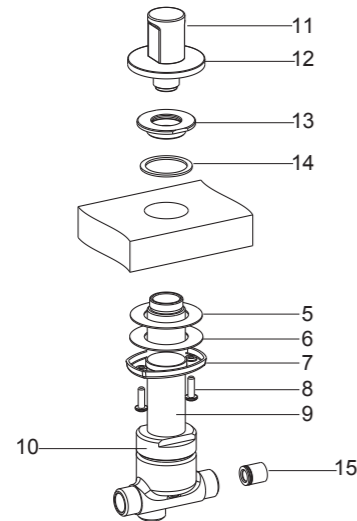
INSTALLATION



How to Install the Tee

Put the washer(2) into the nut(3) of the tee(4). Then connect the tee to one side body(1) of the deck-mount bath faucet as the figure shown.

How to Install the Diverter Body



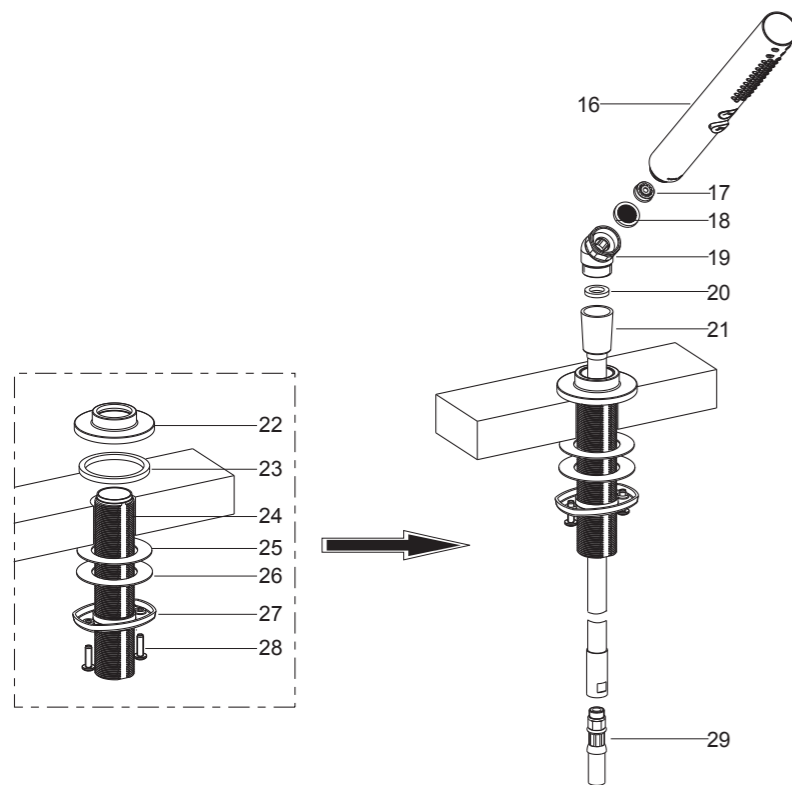
Pre-install the screws(8) into the screw holes of the threaded ring(7). Install the threaded ring, steel washer(6) and fiber washer(5) on the shank(9). From underside of the bathtub, install the diverter assembly (10) into the mounting hole.

Put the washer(14) into the groove of the nut(13). Tighten the nut onto the shank from upside of the bathtub. Secure the diverter assembly by tightening screws.

NOTE: The end with check valve(15) in diverter is connected to shower hose.

Press the handle kit(11) onto the nut as shown. Keep the handle and tighten the handle base(12).

How to Install the Handshower



Pre-install the screws(28) into the screw holes of the threaded ring(27). Install the threaded ring, steel washer(26) and fiber washer(25) on the shank(24). From underside of the bathtub, install the shank into the mounting hole as shown.

Put the rubber washer(23) into the groove of the escutcheon(22). Tighten the escutcheon with washer on the shank. Tighten the screws firmly.

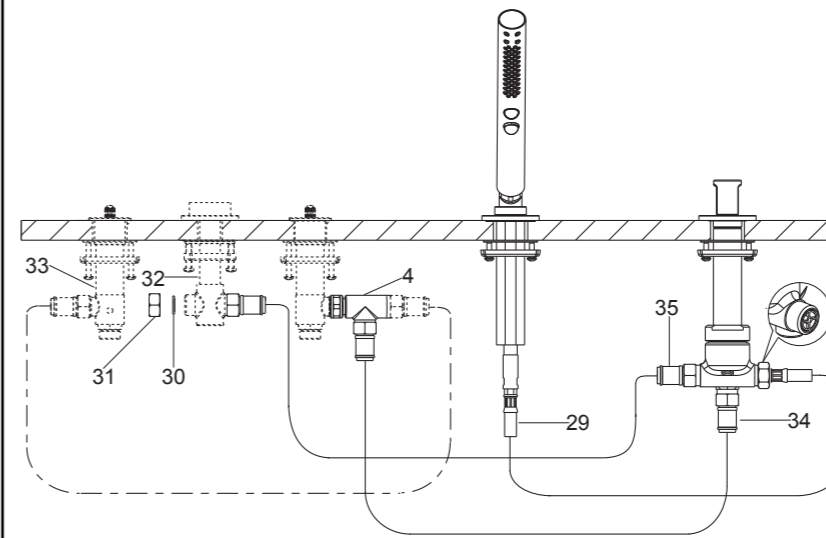
Uninstall the shower hose(21, length: 2000mm) from hose(29, length: 600mm). Put the washer(20) into the shower hose. Connect the shower hose to the elbow assembly(19) firstly. Then slide the shower hose through the escutcheon and shank, and attach it to the hose(29).

Put the screen washer(18) into the elbow assembly. Put the restrictor(17) into the handshower(16) if needed. Connect the elbow assembly to handshower.

How to Connect the Hoses

Put the fiber washer(30) into the plug(31), Tighten the plug to one of the ports of the center tee(32) for the spout.

Connect one side body(33) and the tee(4) on another side body with washers and one of the hoses provided with deck-mount faucet (Remove another hose and put it away).

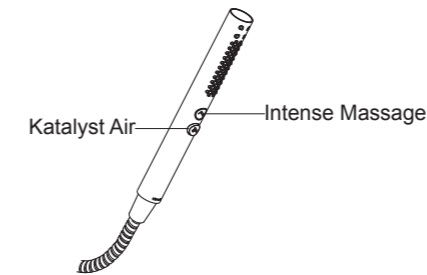


Connect the tee(4) and bottom port of the diverter with hose(34, length:1000mm) and washers. Tighten the connection hose(29) to the end (with check valve) with washer.

Connect the center tee(32) and another end of the diverter with hose(35, length:1000mm) and washers.

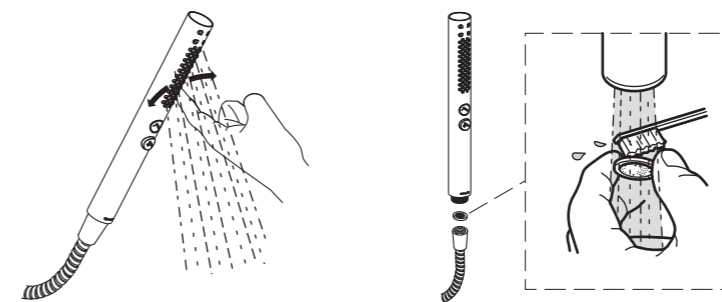
To ensure the water flows smoothly and the handshower can be drawn out easily, the hose should avoid kinking, twisting. To ease installation, you may back off center tee of the spout up to 180 degree. **NOTE:** Hoses should be only used where indicated.

How to Operate the Handshower



Press the buttons of the handshower to change the water flow.

How to Maintain the Handshower



Any debris or mineral build-up may cause the flow stream distorted or reduce the flow rate. To remove the debris or mineral build-up, run water through the handshower, firmly press or rub your finger back and forth across the rubber nozzles.

Remove and clean the screen washer.

INSTALLATION CHECKOUT

Ensure all coupling nuts are tight. Turn on main water supply and check for leaks. Repair as required.

CLEANING INSTRUCTIONS

All Finishes: Clean the finish with mild soap and warm water. Wipe entire surface completely dry with clean soft cloth. Many cleaners may contain chemicals, such as ammonia, chlorine, toilet cleaner etc, which could adversely affect the finish and are not recommended for cleaning.

Do not use abrasive cleaners or solvents on Kohler faucets and fittings.