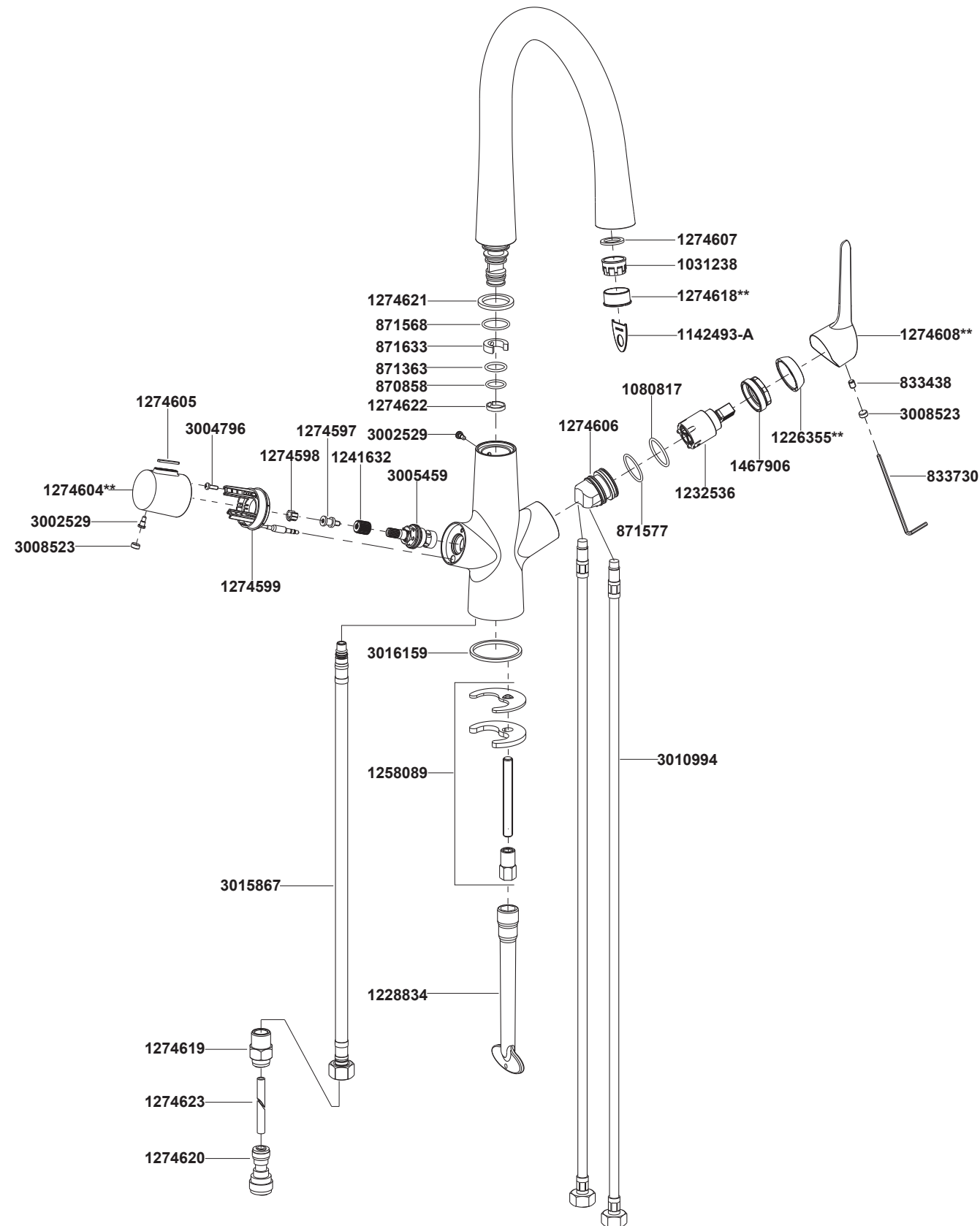


76372T-4 Cast Spout Sink Faucet, W/O Filter



****Color code must be specified when ordering**

76372T-4 Cast Spout Sink Faucet, W/O Filter

BEFORE YOU BEGIN

All information is based on the latest product information available at the time of publication. Kohler Co. reserves the right to make changes in product characteristics, packaging, or availability at any time without notice. Please leave these instructions for the consumer. They contain important information.

NOTES:

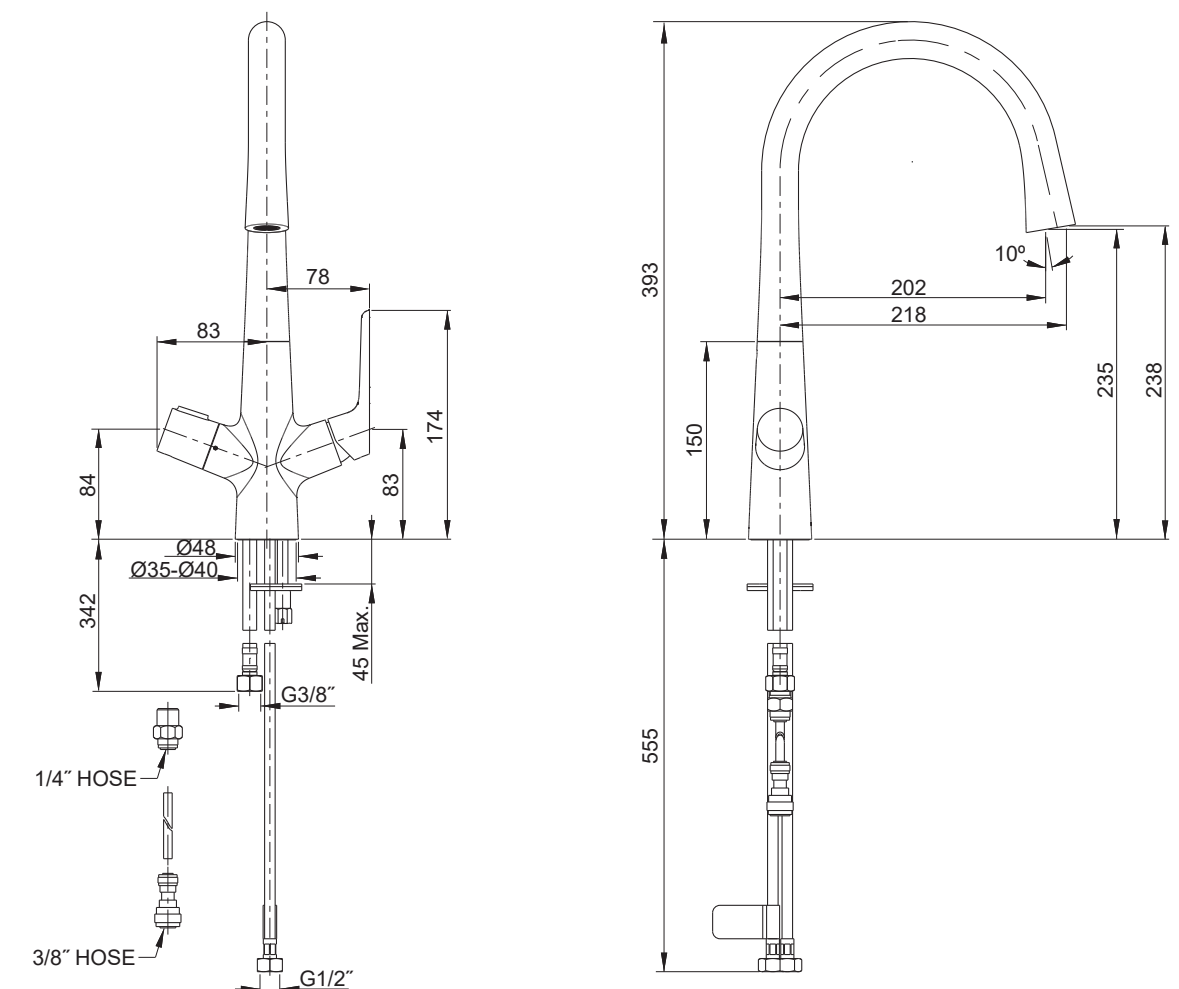
1. Flush the water supply pipes thoroughly to remove debris.
2. For the first time use filtered water, turn the handle on the furthest to remove debris in pipes and the filter until the water is clear and clean.
3. Please refer to the filter instruction for the application detail.

HANDLE OPERATION

Right handle controls hot, cold and mixed water. Lift it gently, turn clockwise for cold water, counter-clockwise for hot water.

Left handle controls filtered water. It opens with one-quarter turn clockwise, closes with one-quarter turn counter-clockwise.

ROUGH-IN DIMENSIONS



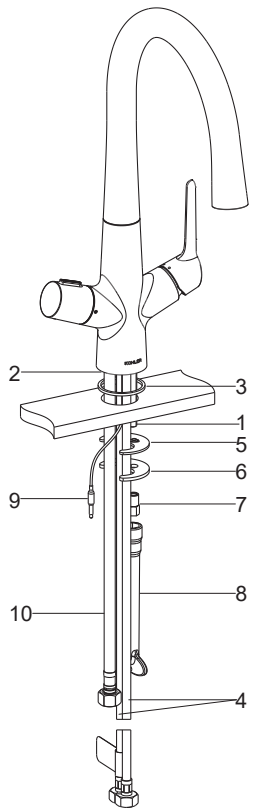
INSTALLATION

How to Install the Faucet

Install the mounting stud(1) into the faucet body base(2). Insert the washer(3) under the body assembly. Insert the hoses(4, 10) and signal line(9) into the sink.

From underside of the sink, place the washers(5, 6)(rubber washer is on the top) and nut(7) onto mounting stud(1). Position the faucet. Tighten the nut to secure faucet to the sink by tool(8).

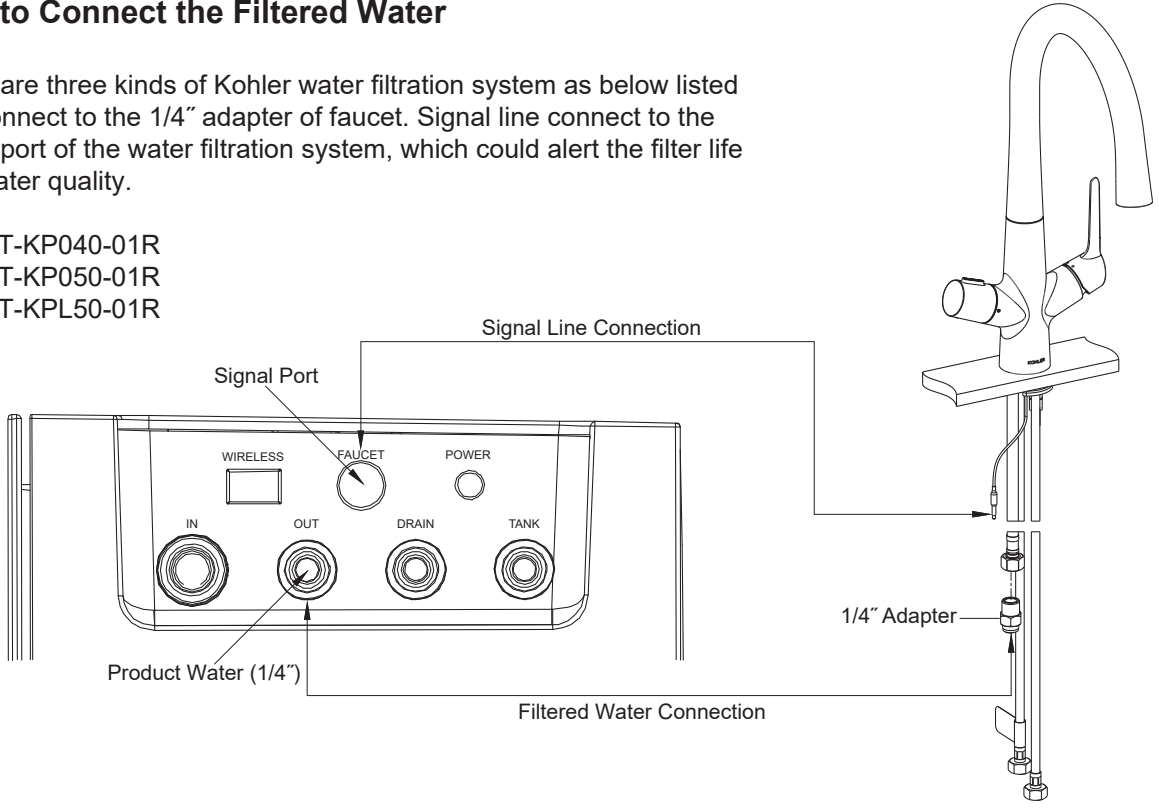
Attach the hoses(4) to water supplies. The hose with "COLD" label is for cold water, another hose is for hot water.



How to Connect the Filtered Water

There are three kinds of Kohler water filtration system as below listed can connect to the 1/4" adapter of faucet. Signal line connect to the signal port of the water filtration system, which could alert the filter life and water quality.

- 80021T-KP040-01R
- 80021T-KP050-01R
- 80021T-KPL50-01R



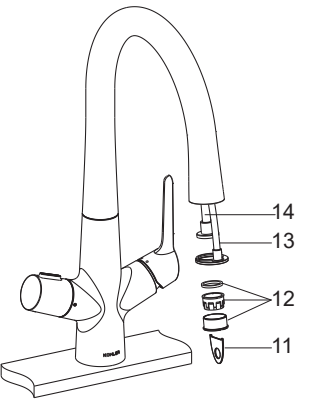
Besides, G3/8" hose and 3/8" hose are provided for filtered water connection.

INSTALLATION CHECKOUT

Ensure that all coupling nuts are tight. Ensure that the handles are in the off position.

Turn on the main water supply and drain, and check for leaks. Repair as needed.

Remove the aerator kit(12) by the key(11). Turn the faucet handle on. Run hot and cold water through the spout for about one minute to remove any debris. Check for leak. Remove debris from the aerator kit. Shut off the faucet. Push the hoses(13, 14) into spout. Reinstall the aerator kit.



CLEANING INSTRUCTIONS

All Finishes: Clean the finish with mild soap and warm water. Wipe entire surface completely dry with clean soft cloth. Many cleaners may contain chemicals, such as ammonia, chlorine, toilet cleaner etc. which could adversely affect the finish and are not recommended for cleaning.

Do not use abrasive cleaners or solvents on Kohler faucets and fittings.

Statistics of Contents of Toxic or Hazardous Substances or Elements

Part name	Toxic or Hazardous Substance or Elements					
	Lead (Pb)	Mercury (Hg)	Cadmium (Cd)	Hexavalent Chromium (Cr(VI))	Polybrominated biphenyls (PBB)	Polybrominated Diphenyl Ethers (PBDE)
Faucet Assy.	×	○	○	○	○	○
LED light Assy.	○	○	○	○	○	○

○: Indicates that the substance in the material composition is below the high limits of the current requirements in GB/T 26572.

×: Indicates that at least one of the homogeneous substance in the material composition is below the high limits of the current requirements in GB/T 26572.

Note: the information provided is based on the supplier data and Kohler inspection results. The product is designed not to hurt the environment. Under current technology, all hazardous materials have been used in the smallest amounts possible. Kohler will strive to reduce the use of these hazardous materials used in this product.



The product "service life for environment protection" is 10 years; Kohler Company will specify product service life based on product characteristics. The product "service life for environment protection" is only effective when the product is used as described in the product specification.

"LEAD FREE" is marked on the back of the faucet signifying its compliance with the United States AB1953