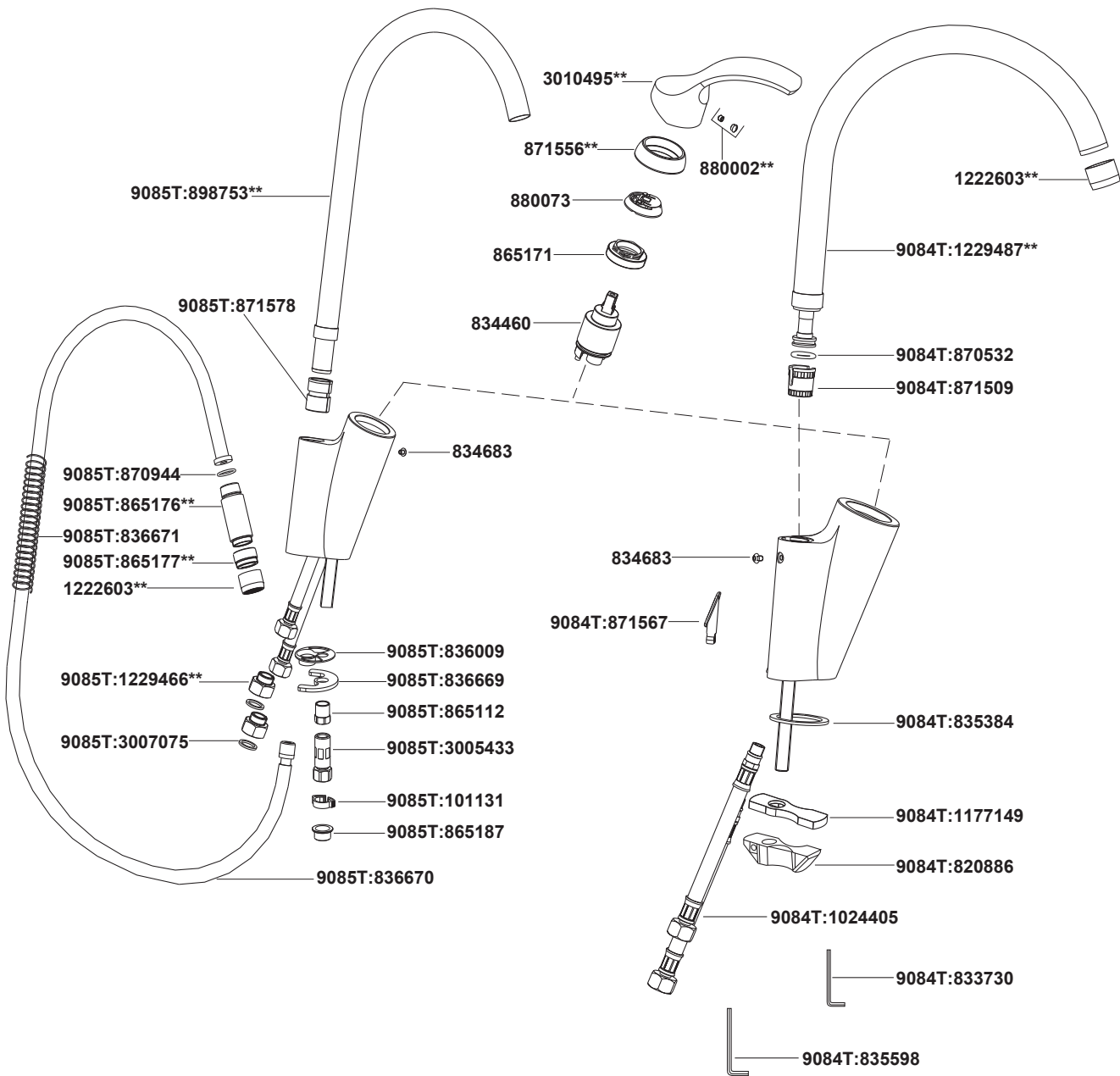


9084T-B4 Single Lever Kitchen Faucet
9085T-B4 Single Lever Kitchen Faucet



**Color code must be specified when ordering

9084T-B4 Single Lever Kitchen Faucet
9085T-B4 Single Lever Kitchen Faucet

BEFORE YOU BEGIN

All information is based on the latest product information available at the time of publication. Kohler Co. reserves the right to make changes in product characteristics, packaging, or availability at any time without notice.

Please leave these instructions for the consumer. They contain important information.

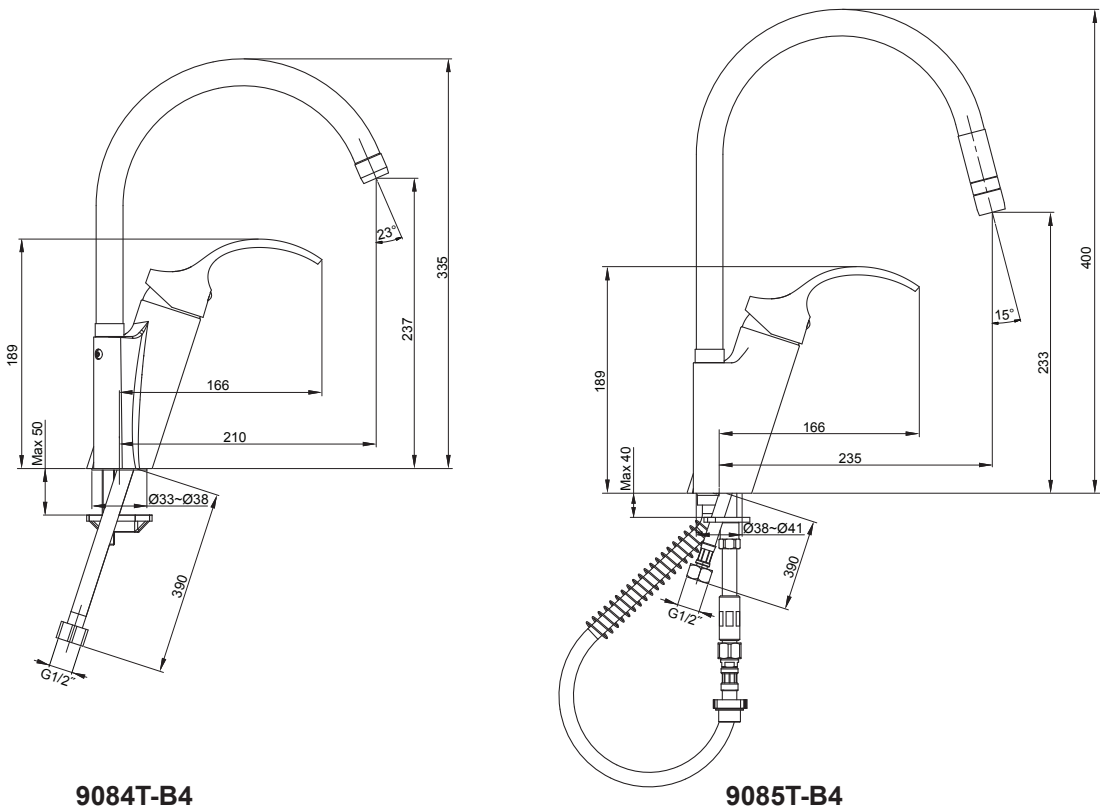
NOTES:

1. Flush the water supply pipes thoroughly to remove debris.
2. Inspect the supply tubing for damage. Replace as necessary.
3. Observe local plumbing codes.
4. Don't remove the inlet hose during the installation process, otherwise it will not be installed.

HANDLE OPERATION

Lift the handle gently. Turn clockwise for hot water, counter-clockwise for cold water. There are two stops in both flow and hot water control conserve water and energy.

ROUGH-IN DIMENSIONS



INSTALLATION

For 9084T-B4

Slip the washer A over the flexible hoses and mounting stud, and into the groove on the body assembly.

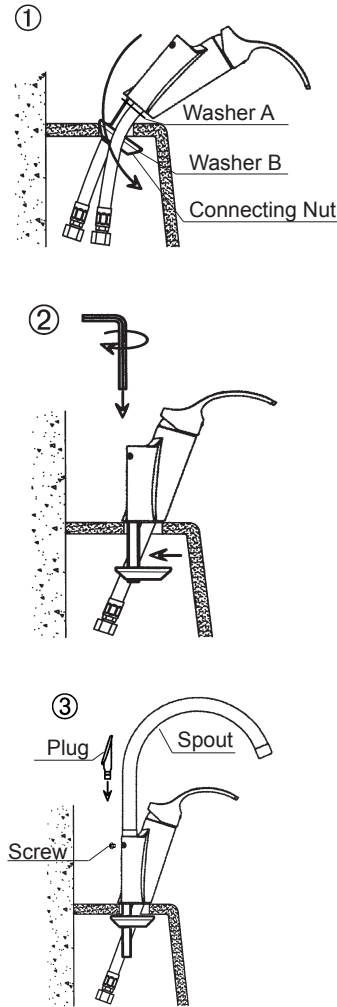
(1) Insert flexible hoses, washer B and connecting nut into hole in deck. Position connecting nut between flexible hoses.

(2) Position the spout, make sure the handle towards forward. Tighten the spout with hex wrench. Check the nut whether is centered and the flexible hoses whether are hung freely.

(3) Insert the spout kit into the outlet hole. Tighten the screw by hex wrench.

(4) Insert the plug into mounting hole.

Attach the hoses to water supplies. When facing front of faucet, the left hose is hot water, the right hose is cold water.



For 9085T-B4

For new installation, assemble faucet to sink before installing.

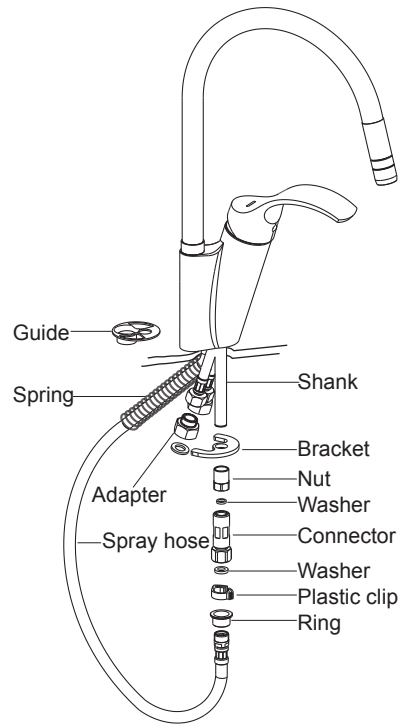
Slide guide into the groove of the body. Insert the hoses into the mounting hole.

From underside of the sink, place the bracket and nut onto the shank. Position the faucet so that the handle is toward the front and the two hoses are symmetrical. Tighten the nut to secure faucet to sink.

Slide the spring to the spray hose. Install the ring and plastic clip to secure the spring. Adjust the position of the plastic clip according to user experience.

Make sure the washers are put into the connector. Connect the connector and spray hose. And then thread the connector to the shank.

Thread the inlet hoses to the water supplies with the adapters. When facing the front of the faucet, the left hose is hot water, the right is cold water.



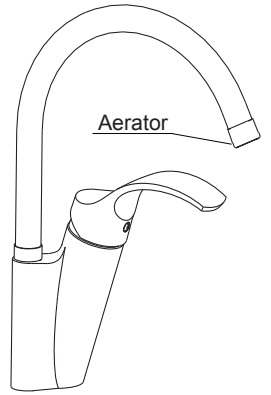
INSTALLATION CHECKOUT

Ensure that all coupling nuts are tight.

Ensure that the handle is in the off position.

Turn on the main water supply, and check for leaks. Repair as needed.

Remove the aerator. Run hot and cold water through the faucet for about one minute to remove any debris. Check for leaks. Remove any debris from the aerator assembly. Shut the faucet off, and reinstall the aerator assembly.



CLEANING INSTRUCTIONS

All Finishes: Clean the finish with mild soap and warm water. Wipe entire surface completely dry with clean soft cloth. Many cleaners may contain chemicals, such as ammonia, chlorine, toilet cleaner etc, which could adversely affect the finish and are not recommended for cleaning.

Do not use abrasive cleaners or solvents on Kohler faucets and fittings.

"LEAD FREE" is marked on the back of the faucet signifying its compliance with the United States AB1953