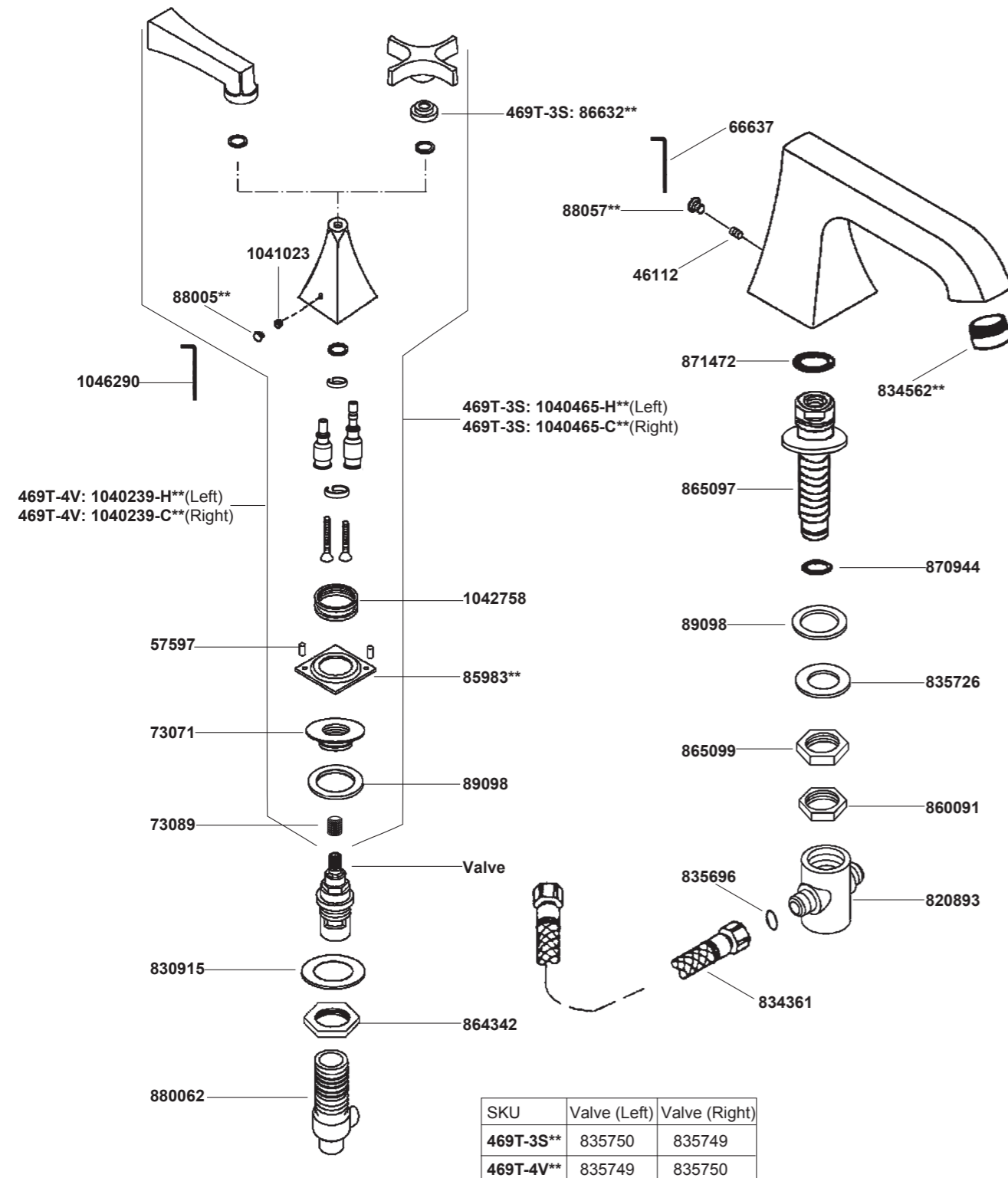


**469T Deck-Mount Bath Faucet**



\*\*Color code must be specified when ordering

**469T Deck-Mount Bath Faucet**

**BEFORE YOU BEGIN**

All information is based on the latest product information available at the time of publication. Kohler Co. reserves the right to make changes in product characteristics, packaging, or availability at any time without notice.

Please leave these instructions for the consumer. They contain important information.

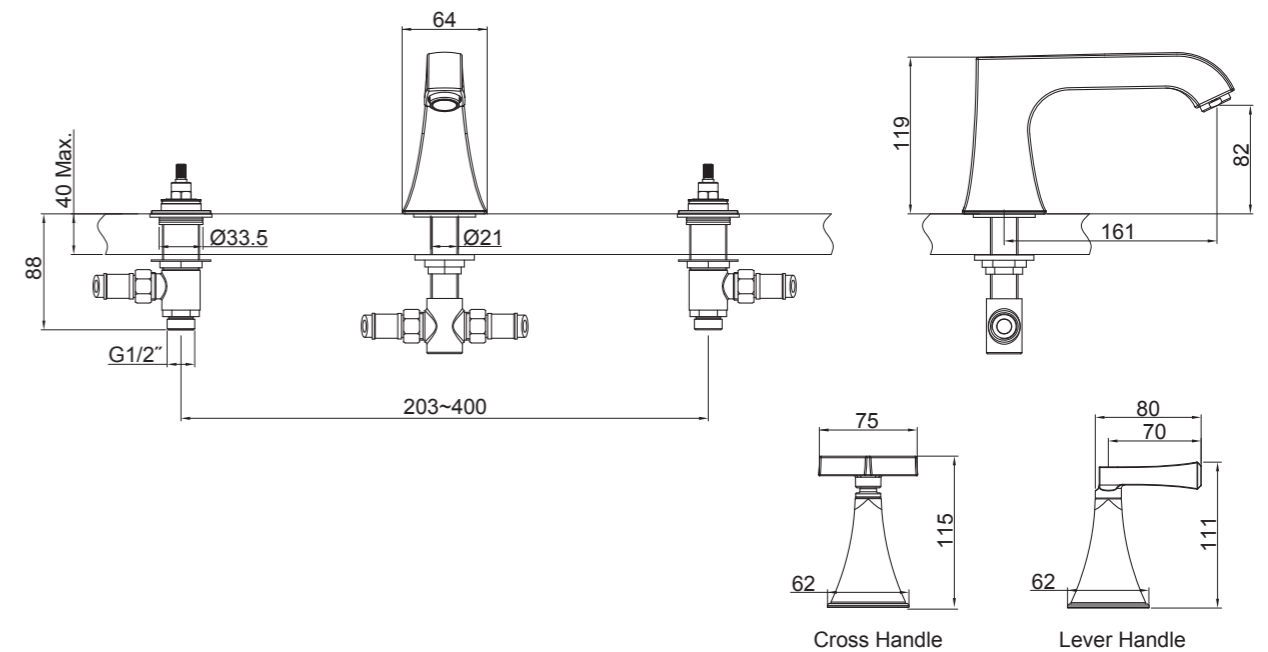
**NOTES:**

1. Flush the water supply pipes thoroughly to remove debris.
2. Inspect the supply tubing for damage. Replace as necessary.
3. Observe local plumbing codes.
4. Shut off the water supplies to the fitting. If possible, install this faucet before installing the tub.

**HANDLE OPERATION**

Left handle opens with one-quarter turning counter-clockwise. Right handle opens with one-quarter turning clockwise (Lever handle). Left handle opens with one-quarter turning clockwise. Right handle opens with one-quarter turning counter-clockwise (Cross handle).

**ROUGH-IN DIMENSIONS**



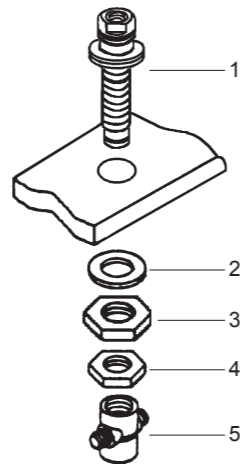
## INSTALLATION

### How To Install The Shank

Remove and retain the parts from the shank(1) according to the following order: supply tee(5), nut(4), nut(3) and washer(2). Fit the shank to the center hole of tub.

Install the washer(2), nut(3), nut(4), and wrench to tighten nut(3) then tighten nut(4).

Thread supply tee to the shank of the unit kit until hand-tight.



### How To Install The Side Bodies

Remove the parts from the side body according to the following order: the sleeve(6) and the collar(8). Leave the washer(10) and the nut(11) on the side body(9).

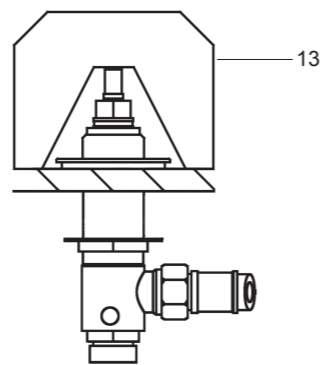
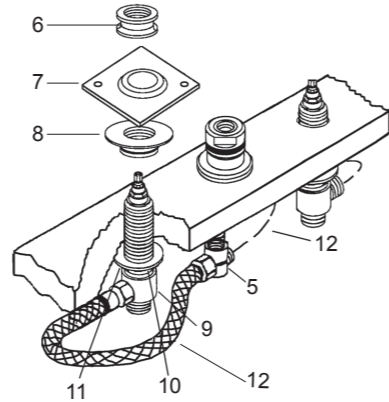
Connect the side bodies(9) and the center tee(5) with the hoses(12) as in the drawing.

**Note:** The hoses(12) should be only used here.

Insert the side bodies through the mounting holes from the bottom of the deck or the bath tub rim with the washer and the nut.

Thread the collar(8) onto each side body. Adjust the side body height with an adjustable cardboard(13). Thread the escutcheon(7) and the sleeve(6) onto each side body. Wrench to tighten nut(11).

**Note:** Install the valve body with blue mark on the right when facing the front of the faucet. For easy installation, loosen the supply tee properly by unscrewing it, but not more than 180 degrees. Ensure that the water inside the hoses flow smoothly.

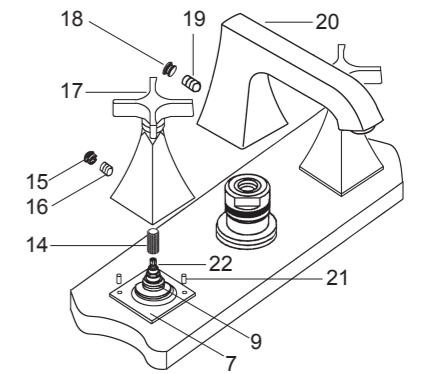


### How To Install The Handles And Spout

Press the stem extension(14) onto the valve stem(22), install the handle kit(17) onto the side body(9) until it contacts the escutcheon(7, **Notes:** The handle kit with red washer should be installed on the left side of body). Don't lose the pins(21). Tighten the screw(16) by hex wrench provided, then insert the plug button(15) into the rear hole.

Insert the spout(20) to the shank until it contacts the deck. Tighten the screw(19) by hex wrench provided, then insert the plug button(18) into the rear hole.

The following configuration shown is the correct position for the installed spout and handles when closed.

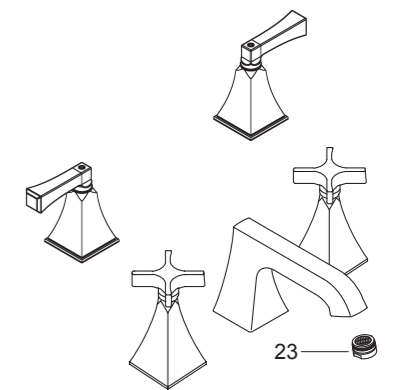


### INSTALLATION CHECKOUT

Ensure that all coupling nuts are tight. Ensure that the handles are in the off position.

Turn on the main water supply and drain, and check for leaks. Repair as needed.

Remove the aerator(23). Turn the faucet handle on. Run hot and cold water through spout for about one minute to remove any debris. Remove any debris from the aerator assembly. Shut off the faucet. Reinstall aerator assembly.



### CLEANING INSTRUCTIONS

All Finishes: Clean the finish with mild soap and warm water. Wipe entire surface completely dry with clean soft cloth. Many cleaners may contain chemicals, such as ammonia, chlorine, toilet cleaner etc, which could adversely affect the finish and are not recommended for cleaning.

Do not use abrasive cleaners or solvents on Kohler faucets and fittings.