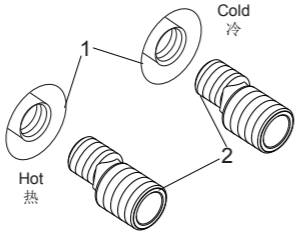
1

安装步骤

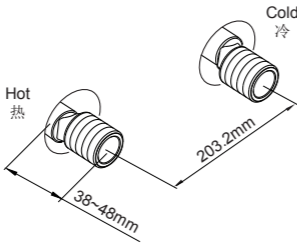
如何安装水龙头

为使安装顺利，G1/2"内螺纹管道配件(1)应该已经安装好。预留203.2mm的间距，保持水平。管道配件要垂直并不能凸出装修好的墙面。热供水管装在左边。



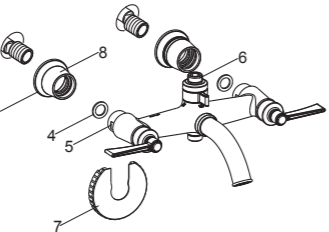
彻底冲洗供水管，以清除管路中的杂质。

在两个接头(2)涂上螺纹密封胶或缠绕足以密封的密封胶带，旋入冷热水管中。



调节两个接头，使其中心距离为203.2mm并保持同一水平。它们凸出墙面的尺寸应该在38到48mm之间。

将装饰盖组件(3)旋紧到接头上，且与墙面接触。将垫片(4)放入水龙头螺母(5)中，保持花洒龙头出水口(6)朝上，将螺母旋到接头上。用扳手(7)锁紧螺母。旋松装饰盖(8)使其完全盖住螺母。



INSTALLATION

How to Install the Faucet

To perform installation, installer must provide G1/2" female supply fittings(1), spaced 203.2mm apart and level. The supply fittings should be vertical and not beyond the finished wall. Hot supply pipe must be located on the left.

Flush the water supply pipes thoroughly to remove debris.

Install the two offset connectors(2) into the hot and cold supply pipes. Use appropriate thread sealants or thread tape on pipe threads.

Adjust the center-to-center distance between the connectors to 203.2mm and level. They should extend 38 to 48mm beyond the finished wall.

Thread the escutcheon kits(3) onto the connectors until they are against the finished wall. Put the washers(4) into the nuts(5). Keeping the shower faucet outlet(6) upwards, and thread the nuts to connectors. Tighten the nuts with the wrench(7). Loosen the escutcheons(8) so that they cover the nuts.

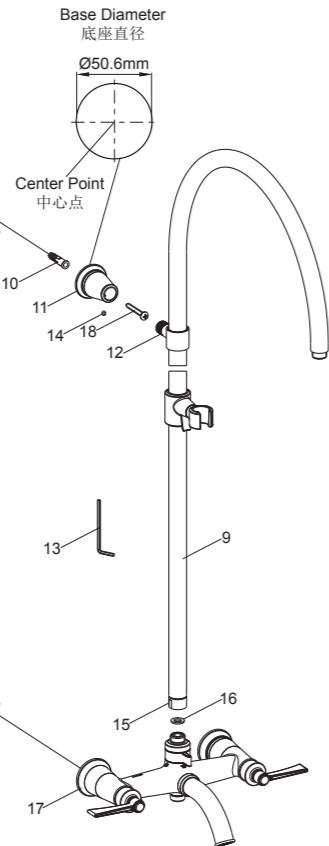
如何安装淋浴杆

试装滑杆组件(9)以确定胀塞(10)安装位置。将底座(11)套在连接件(12)上。用六角扳手(13)将螺钉(14)装入底座，并锁紧。

用手将螺母(15)带垫片(16)旋紧到龙头出水口(6)。保持滑杆组件与墙面平行，用六角扳手旋松螺钉，调节底座使其紧贴墙壁放置，旋紧螺钉。在距离龙头装饰盖(17)中心点950±50mm的位置，用铅笔标记底座直径。旋松螺母，取下垫片，拆下滑杆组件，用六角扳手旋松螺钉(注意：切勿弄丢螺钉。)，拆下底座。

用铅笔标记底座直径中心点的位置。根据胀塞直径，在中心点位置钻孔。将胀塞塞入孔中，用自攻钉(18)固定底座，确保底座螺钉孔铅垂向下。

将连接件装入底座。用手将螺母(15)带垫片(16)旋紧到龙头出水口(6)上。用带状扳手或用软布垫在普通扳手和螺母之间锁紧螺母。用六角扳手锁紧螺钉。



How to Install the Column

Rehearse the slide bar kit(9) installation for the anchor(10) mounting location determination. Slide the base(11) onto the connector(12). Install the screw(14) into the base with the hex wrench(13), and tighten them.

Tighten the nut(15) with the washer(16) onto the faucet outlet(6) by hand. Keep the slide bar kit parallel with the finished wall. Loosen the screw with the hex wrench. Adjust the base so that it is against the finished wall. Tighten the screw. Mark the diameter of the base with a pencil on the location that separate 950±50mm from the center point of the faucet escutcheon (17). Loosen the nut by hand, remove the washer, remove the slide bar kit. Loosen the screw with the hex wrench (NOTE: Don't lose the screw.), remove the base.

Mark the center point of the base diameter with a pencil. Drill a hole on the center point as anchor diameter. Press the anchor into the hole. Secure the base by the self-tapping screw(18), and make sure screw hole of the base vertically downwards.

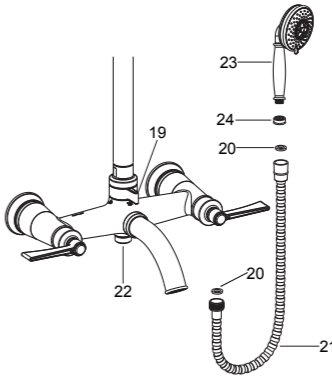
Install the connector into the base. Thread the nut(15) with the washer(16) to the faucet outlet(6) by hand. Tighten the nut with strap wrench or soft cloth between product and regular wrench. Tighten the screw with the hex wrench.

如何安装手持花洒和软管

将切换手柄(19)旋至手持花洒标志处，打开水源冲掉杂质。

将限流器(24)装入花洒(23)的进水端，将垫片(20)装入软管(21)的两端，用软管连接出水口和花洒。

注意：如果水压过低，限流器则不必装入花洒。



How to Install the Handspray and Hose

Turn the diverter handle(19) to the handspray logo and run hot and cold water for about one minute to remove any debris.

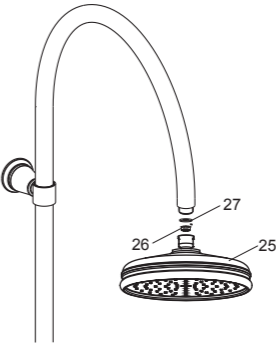
Install the water flow restrictor(24) to the handspray(23) inlet, put the washers(20) into the both ends of the hose(21). Connect the faucet outlet and handspray with the hose.

Note: If working pressure is too low, water flow restrictor is not needed.

如何安装头顶花洒

安装头顶花洒(25)之前，使切换手柄(19)处于头顶花洒标志处，打开水源冲掉管路中的杂质。将头顶花洒旋到滑杆组件出水口上，用带状扳手锁紧。

在安装头顶花洒之前，可根据需要安装限流器(26)。先取出垫片(27)，按图示方向放入限流器，再装回垫片。



How to Install the Showerhead

Turn the diverter handle(19) to the showerhead logo and run hot and cold water for about one minute to remove any debris before the showerhead(25) is installed. Tighten the showerhead onto the slide bar kit outlet with strap wrench.

Before installation, install restrictor(26) if needed. Take out washer(27) and install restrictor as the figure shown, reinstall washer.

安装结果检查

检查并确保所有的衔接处都已拧紧，确保手柄在关的位置。

打开排水系统和主要供水源，检查并修理有漏水的接口。

INSTALLATION CHECKOUT

Ensure that all connections are tight. Ensure that the handles are in the off position.

Turn on the drain and main water supply, and check for leaks. Repair as needed.

清洗说明

适用于所有加工处理过的表面：以中性肥皂水清洗镀层表面，再以干净的软布彻底擦干整个表面，许多清洁剂，比如氨水、去污粉及洁厕灵等，会对电镀表面造成伤害，切忌使用。

有磨损性的清洁用具或清洁剂也不可使用于科勒牌的水龙头及其配件上。

CLEANING INSTRUCTIONS

All Finishes: Clean the finish with mild soap and warm water. Wipe entire surface completely dry with clean soft cloth. Many cleaners may contain chemicals, such as ammonia, chlorine, toilet cleaner etc. which could adversely affect the finish and are not recommended for cleaning.

Do not use abrasive cleaners or solvents on Kohler faucets and fittings.