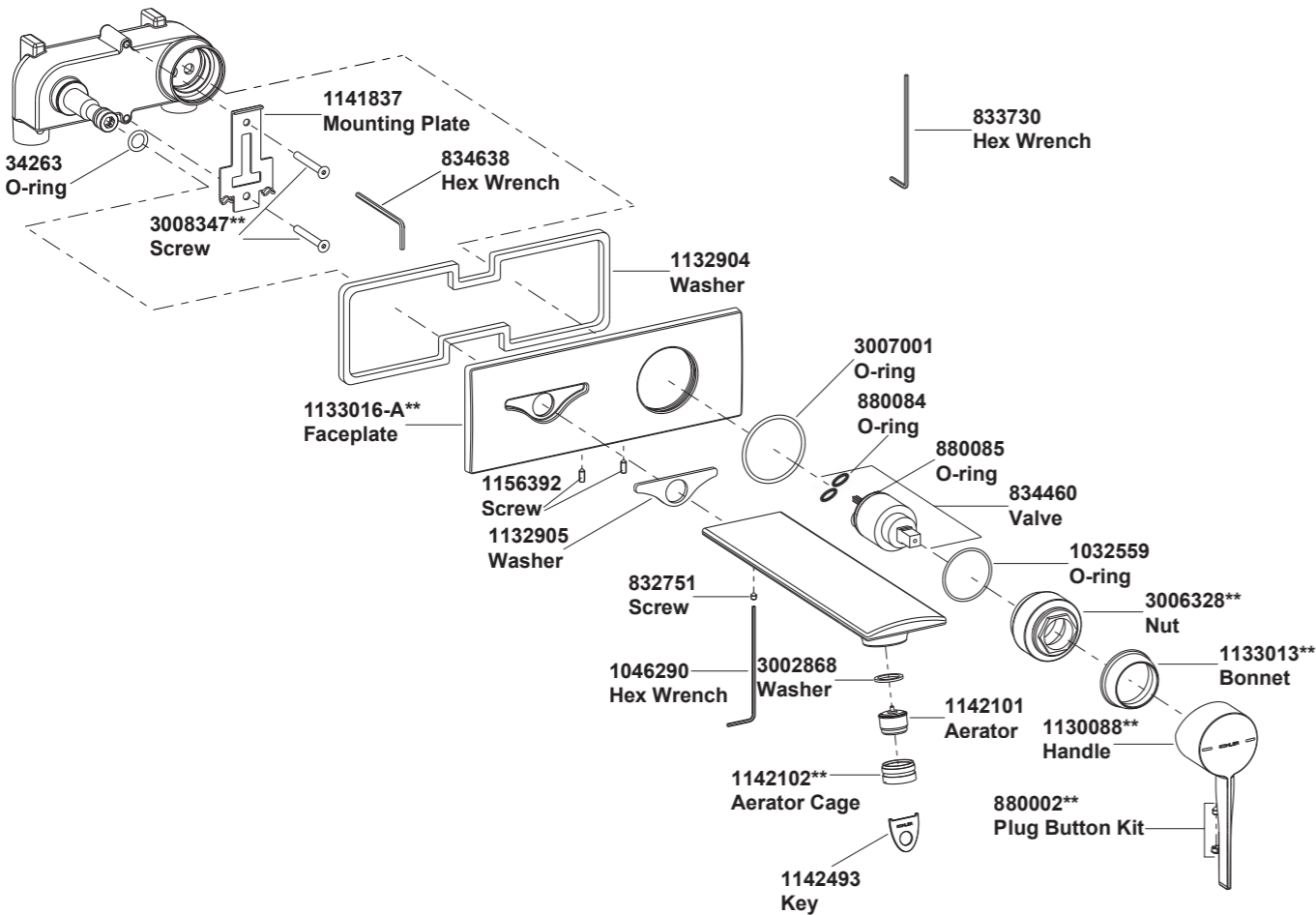


9106-4ND WALL MOUNT SINGLE HANDLE LAVATORY FAUCET



**Color code must be specified when ordering

9106-4ND WALL MOUNT SINGLE HANDLE LAVATORY FAUCET

BEFORE YOU BEGIN

All information is based on the latest product information available at the time of publication. Kohler Co. reserves the right to make changes in product characteristics, packaging, or availability at any time without notice.

Please leave these instructions for the consumer. They contain important information.

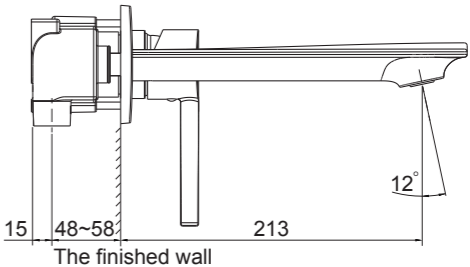
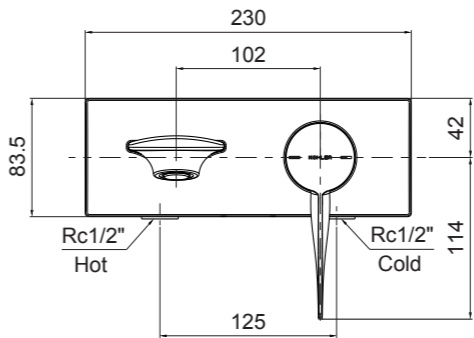
NOTES:

1. Flush the water supply pipes thoroughly to remove debris.
2. Inspect the supply tubing for damage. Replace as necessary.
3. Observe local plumbing codes.
4. Check for leaks before covering the pipes, repairs as needed.
5. Inlet threads of body are Rc1/2".

HANDLE OPERATION

Lift the handle gently, turn clockwise for hot water, counter-clockwise for cold water.

ROUGH-IN DIMENSIONS



INSTALLATION

How to Install the Body

Determine where the valve body(1) will be located on the wall. Be sure the protectors(2) face front and inlet of the valve body with red mark is on the left.

The out surface of the finished wall should be between the MAX and MIN marks on the protectors(2) as Fig.1 shown. The size of opening in finished wall is as Fig.2 shown.

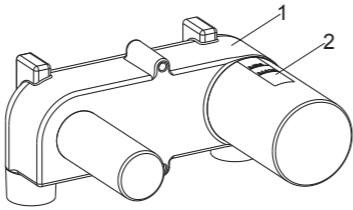


Fig.1

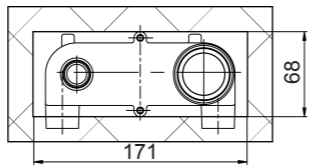


Fig.2

NOTE: Ensure the centerline of valve is perpendicular to the wall, the up plane of valve body is level.

Connect Rc1/2" hot and cold supplies to the body as Fig.1 shown. Connect hot supply to the left with red mark.

During installation, the protectors remain on the valve body.

How to Install the Handle and Spout

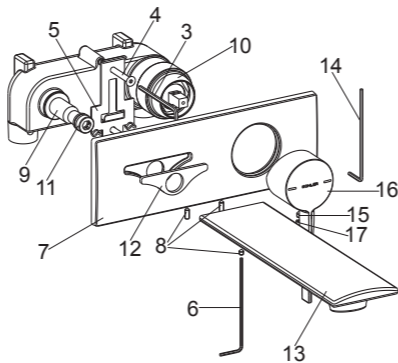
Remove the protectors after the wall is finished.

Tighten the screws(4) with 3mm hex wrench(3) to secure the mounting plate(5) until it is against the wall. Loosen the screws(8) on the faceplate kit(7) with 2mm hex wrench(6). Slide the faceplate kit through the connector(9) and bonnet(10) until it is against the wall.

NOTE: Don't damage the o-ring (11) on connector. Tighten the screw to secure the faceplate kit.

Slide the washer(12) into the groove on the faceplate kit. Loosen the screw(8) on the spout(13) with 2mm hex wrench(6). Slide the spout onto the connector with its outlet downwards. Tighten the screw to secure the spout.

valve closed, and loosen the screw(15) on the handle with 2.5mm hex wrench (14). Install the handle(16) onto the valve body with it upwards. Tighten the screw. Press the plug button(17) into the hole.

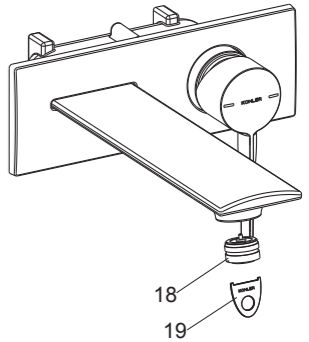


INSTALLATION CHECKOUT

Ensure that all coupling nuts are tight. Ensure that the handle is in the off position.

Turn on the drain and main water supply, and check for leaks. Repair as needed.

Remove the aerator assembly(18) with the key(19) provided. Turn on faucet handle. Run hot and cold water through spout about one minute to remove any debris. Check for leaks at this time. Remove any debris from the aerator assembly. Shut off the faucet. Reinstall the aerator assembly.



CLEANING INSTRUCTIONS

All Finishes: Clean the finish with mild soap and warm water. Wipe entire surface completely dry with clean soft cloth. Many cleaners may contain chemicals, such as ammonia, chlorine, toilet cleaner etc. which could adversely affect the finish and are not recommended for cleaning.

Do not use abrasive cleaners or solvents on Kohler faucets and fittings.