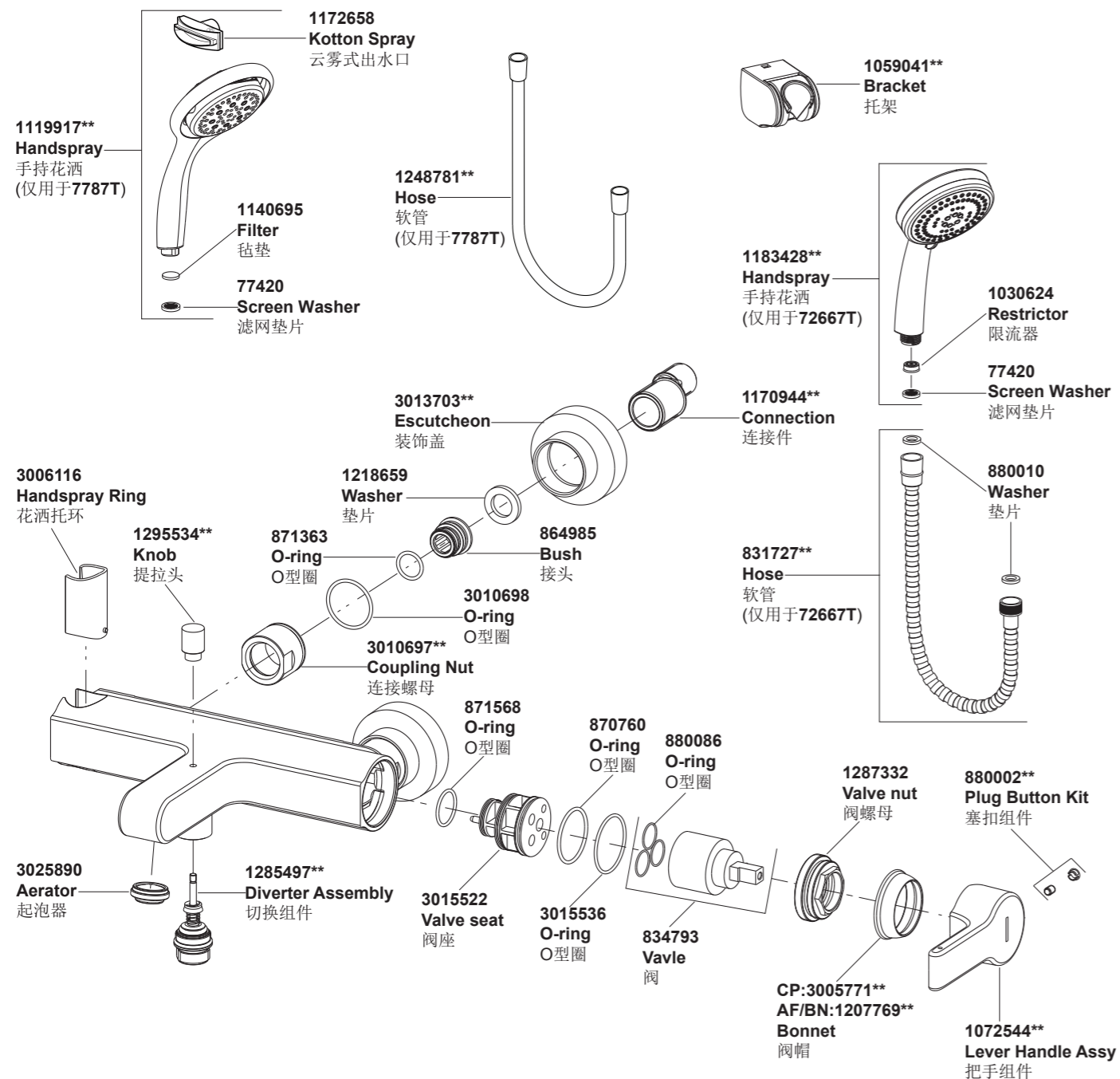


**7787T-4    72667T-4    挂墙式浴缸花洒龙头**



**\*\*订购时请说明颜色编号**

\*\*Color code must be specified when ordering

**7787T-4    72667T-4    挂墙式浴缸花洒龙头**

## 安装之前

所有的资料是按最新出版的产品资料编写而成。科勒公司保留任何时候不经通知即可改变产品特性、包装或产品可供类型的权利。

说明书包括重要的安装、保养及清洁方面的内容，请把这些资料交给用户阅读。

**注意事项:**

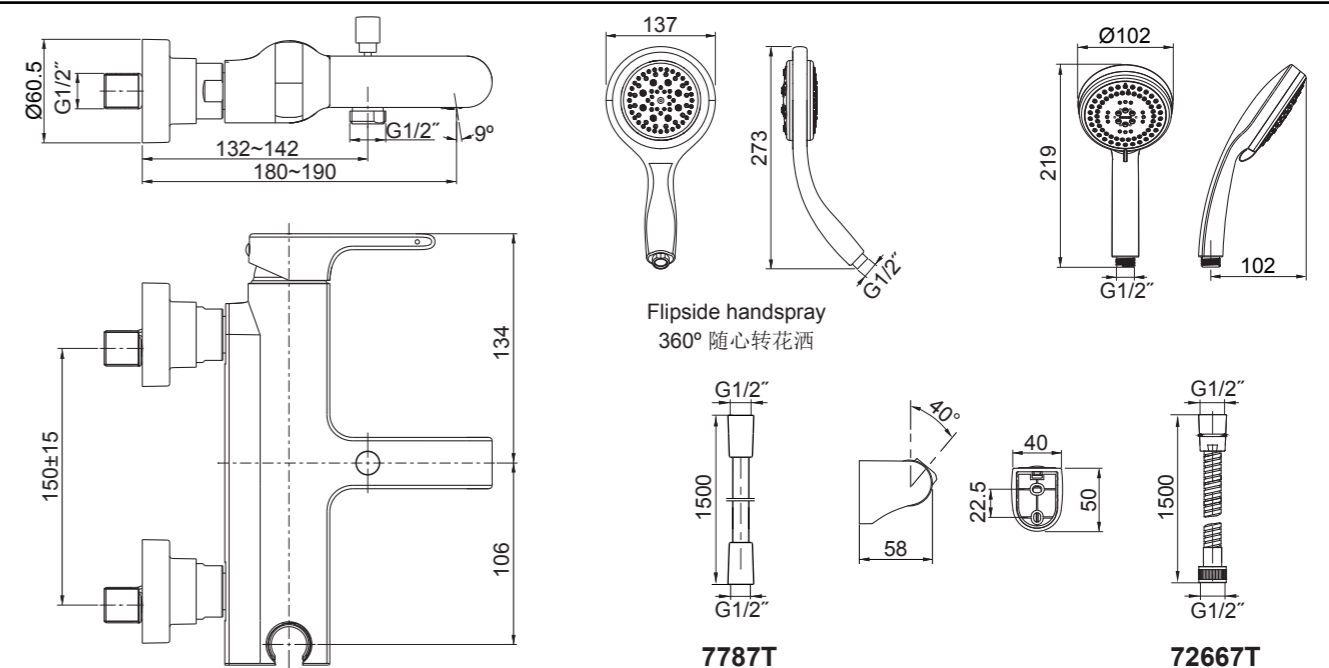
- 1.一定要先彻底冲洗供水管以清除管道中的杂质。
- 2.切换器正常工作的最小压力为0.05MPa(0.5bar)。
- 3.花洒最高工作压力: 0.5MPa(5bar)。水压超过0.5MPa (5bar)须安装减压阀。花洒最高工作温度及环境温度: 60°C。请特别注意花洒同花洒连接的软管须远离浴霸, 否则可能损坏花洒及其密封件, 甚至对使用者造成伤害。

- 4.对于7787T,手持花洒限流器不能取出,否则可能损坏花洒。

## 使用说明

将手柄轻轻地提起，顺时针旋转为热水，逆时针旋转为冷水。龙头切换器处于正常位置时浴缸出水口出水，上提切换器切换至手持花洒出水。

## 安装尺寸



## BEFORE YOU BEGIN

All information is based on the latest product information available at the time of publication. Kohler Co. reserves the right to make changes in product characteristics, packaging, or availability at any time without notice.

Please leave these instructions for the consumer. They contain important information.

**NOTES:**

1. Flush the water supply pipes thoroughly to remove debris.
2. The minimum inlet water pressure for the diverter is 0.05MPa(0.5bar).
3. The highest working pressure for handspray is 0.5MPa (5bar). If it exceeds 0.5MPa(5bar), a pressure reducer is needed. The highest water and environment temperature is 60°C. Please keep handspray, shower head and the shower arm away from heater, or it may become damaged and cause injury to the user.
4. For 7787T, don't remove the regulator, or maybe damage the handspray.

## HANDLE OPERATION

Lift the handle gently. Turn clockwise for hot water, Turn counter-clockwise for cold water. Water flows out from spout when faucet diverter is in the normal position and it's diverted to handspray when the diverter is lifted.

## ROUGH-IN DIMENSIONS

安装步骤

如何安装水龙头

为使安装顺利，G1/2”内螺纹管道配件(1)应已安装好。预留150mm的间距，保持水平，管道配件要垂直并不能凸出装修好的墙面。热供水管装在左边。

彻底冲洗供水管，以清除管路中的杂质。

在两个接头(2)涂上螺纹密封胶或缠绕足以密封的密封胶带，旋入冷热水管中。

调节两个接头，使其中心距离为150mm，并保持同一水平。他们凸出墙面的尺寸应该在33到43mm之间。

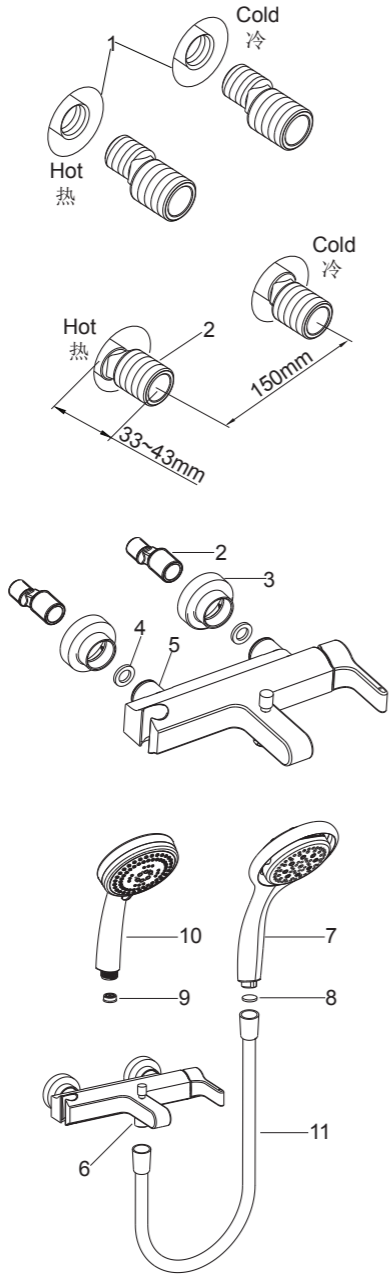
将垫片(4)放入水龙头螺母(5)中，在装饰盖(3)背面边缘涂一圈油灰，将装饰盖装到水龙头螺母上，将螺母旋到接头上，用带状扳手或用软布垫在普通扳手和螺母之间，锁紧螺母。后推装饰盖使其紧贴墙壁，去除多余油灰。

去掉出水口(6)保护套。对于7787T，手持花洒(7)的限流器不可取出，将毡垫(8)放入手持花洒(7)内；对于72667T，根据需要将限流器(9)塞入手持花洒(10)进水口。将手持花洒旋紧到软管(11)上，软管另一端连接出水口(6)。

如何安装托架

在墙面选择合适的位置来安装托架。

根据孔距在墙面标记位置，依据胀塞(15)直径打孔，安装胀塞。旋紧螺钉(14)，使底座(12，平面朝上)固定紧贴墙壁。将托架(13)扣在底座上，使凸台嵌入豁口。把花洒挂在托架上。



INSTALLATION

How to Install the Faucet

To perform installation, installer must provide G1/2” female supply fittings(1), spaced 150mm apart and horizontally. The supply fittings should be vertical and not beyond the finished wall. Hot supply pipe must be located on the left.

Flush the water supply pipes thoroughly to remove debris.

Install the two offset connectors(2) into the hot and cold supply pipes. Use appropriate thread sealants or thread tape on pipe threads.

Adjust the center-to-center distance between the connectors to 150mm and horizontally. They should extend 33 to 43mm from finished wall.

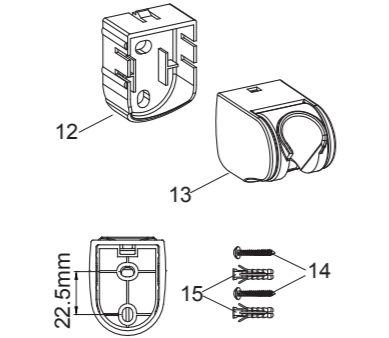
Put the washers(4) into the nuts(5). Apply a ring of putty on back of the escutcheons(3). Install the escutcheons onto the nuts. Thread the nuts onto the connectors. Tighten the nuts with strap wrench or soft cloth between product and regular wrench. Push the escutcheons until against the finished wall. Remove any excess putty.

Remove the guard on the outlet(6). For 7787T, don't remove the restrictor of handspray(7). Put the filter(8) into the handspray(7). For 72667T, put the restrictor(9) into the handspray(10) inlet if needed. Screw the handspray to the shower hose(11). Connect another end of shower hose to the faucet outlet(6).

How to Install the Bracket

Determine a suitable location on the finished wall to install the bracket.

Mark bracket base mounting hole locations on the wall according to the dimension. Drill two holes on the finished wall, the holes should match the anchors(15). Install the anchors. Tighten screws(14) to secure bracket base(12) to the finished wall. Put the bracket(13) onto the bracket base and lock by stopper. Hang the handspray on the shower bracket.



操作说明

旋转手持花洒头部，如图所示可获得不同水流方式，见右图。

如何清洗喷孔水垢，杂质

喷孔结垢或堵塞会导致水流变形，流量变小。打开水源，用力地按压或摩擦橡胶喷孔，去除水垢或杂质。

如何清洗滤网垫片

拆下手持花洒(8)。将滤网垫片(6)和毡垫(9)从手持花洒中依次取出。用热醋清洗滤网垫片上的滤网。清洗滤网垫片和毡垫。重新将毡垫和滤网垫片装入手持花洒。重新装回手持花洒。

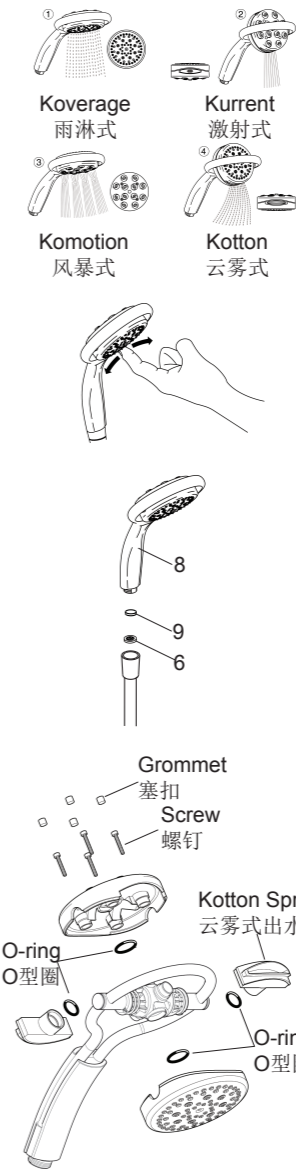
如何清洗云雾式出水口

用带尖工具把白色塞扣拨下。用2.5mm六角扳手(客户自备)把四个螺钉拆下。将上下盖拆下后，即可拆下云雾式出水口。

用白醋浸泡30分钟后即可清除污垢。

**注意：**确保O型圈的位置正确。

按顺序装回所有零件。



OPERATING INSTRUCTION

Rotate the head of the handspray to change the spray patterns as shown.

How to Clean the Nozzles

The furriness or debris may cause the flow stream to become distorted or reduce the flowrate. To clean up the furriness or debris, run water through the handspray, firmly press or rub your finger back and forth across the rubber nozzles.

How to Clean the Screen Washer

Remove the handspray(8). Take out the screen washer(6) and the filter(9) from the handspray. Clean the filters of the screen washer by soaking them in warm vinegar. Clean the screen washer and filter. Reinstall the filter and screen washer into the handspray. Reinstall the handspray.

How to Clean the Kotton Spray

Use a suitable tool to remove the four grommets. Using the 2.5mm hexagon wrench(not supplied), remove the four screws. Separate the sprayplate assembly into its individual components.

Clean the kotton spray by soaking them in warm vinegar for 30 minutes.

**NOTE:** Make sure that the o-rings are located correctly.

Reassemble the components in reverse order.

安装结果检查

检查并确保所有衔接处都已拧紧，确保手柄在关的位置。打开排水系统和主要供水源，检查并修理有漏水的接口。

取下花洒并用硬币取下起泡器，打开水龙头的冷热水，让水流出约一分钟以清除杂质。检查渗漏，冲洗起泡器，关闭水龙头，重新装回起泡器和手持花洒。

清洗说明

适用于所有加工处理过的表面：以中性肥皂水清洗镀层表面，再以干净的软布彻底擦干整个表面，许多清洁剂，比如氨水、去污粉及洁厕灵等，会对电镀表面造成伤害，切忌使用。

有磨损性的清洁用具或清洁剂也不可使用于科勒牌的水龙头及其配件上。

INSTALLATION CHECKOUT

Ensure that all coupling nuts are tightened. Ensure that the handles are in the off position. Turn on the drain and main water supply, and check for leaks. Repair as needed.

Remove the handspray. Remove the aerator. Turn on the faucet. Run hot and cold water through the spout for about one minute to remove any debris. Check for leaks. Remove any debris from the aerator. Shut off the faucet. Reinstall the aerator and the handspray.

CLEANING INSTRUCTIONS

All Finishes: Clean the finish with mild soap and warm water. Wipe entire surface completely dry with clean soft cloth. Many cleaners may contain chemicals, such as ammonia, chlorine, toilet cleaner etc. which could adversely affect the finish and are not recommended for cleaning.

Do not use abrasive cleaners or solvents on Kohler faucets and fittings.